



# How to Clean Mikuni Snowmobile Carburetor

Cleaning carburetors from a snowmobile for preseason maintenance.

Written By: Zack Reuter



## INTRODUCTION

Taking a snowmobile carburetor out of a snowmobile to partially disassemble to clean for preseason maintenance.



### TOOLS:

- [1/2" Socket](#) (1)
- [3/8" Drive Ratchet](#) (1)
- [1/4" Socket](#) (1)
- [Phillips #2 Screwdriver](#) (1)
- [Large Needle Nose Pliers](#) (1)
- [3/8" Socket](#) (1)
- [10mm Wrench](#) (1)
- [Secondary Tool](#) (1)



### PARTS:

- [Throttle Body and Air-Intake Cleaner \(Carb\)](#) (1)

## Step 1 — How to Clean Mikuni Snowmobile Carburetor



- Remove the side panel.
- Pull the 2 rubber straps off.
- Pull the panel up and out.

## Step 2



- Remove the belt cover by removing the pin.



### Step 3



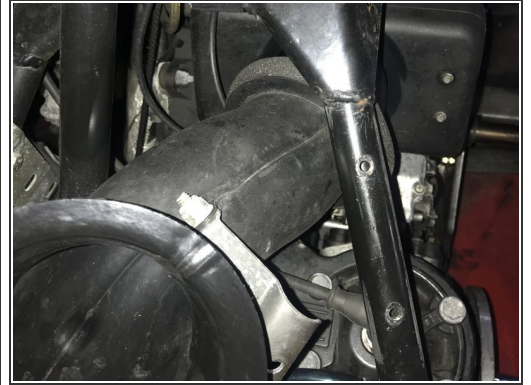
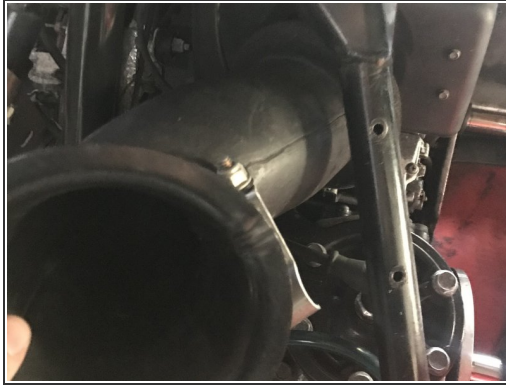
- Use the secondary tool to expand the clutch. Turn clockwise.
- After this is done, roll the belt over the clutch to remove belt. Rolling the belt towards the back end of the machine.

### Step 4



- Remove the bolt on secondary clutch with a 1/2"(12.7 mm) open ended box wrench.
- Pull the bolt and washers out.
- Slide the secondary clutch off of the shaft.

## Step 5



- Using a 3/8"(9.525 mm) socket on the 3/8" ratchet, remove the air horn bolts, and pull the air horn out.

## Step 6

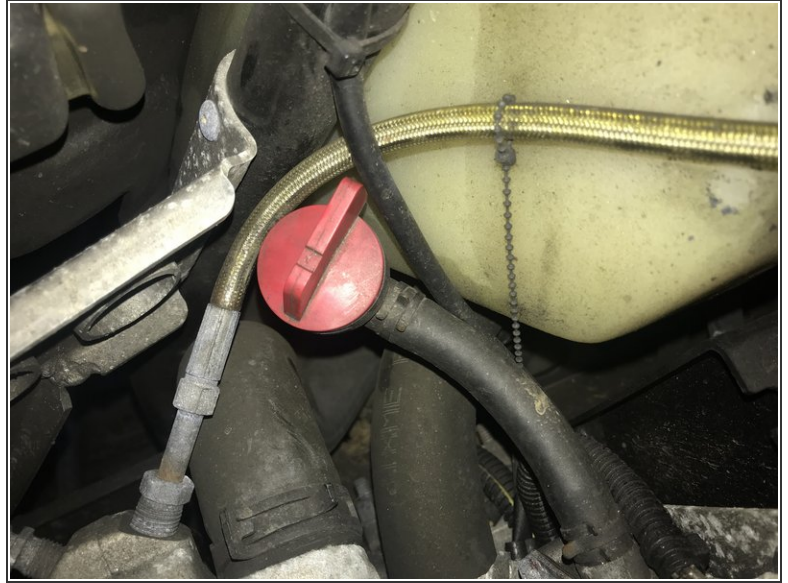
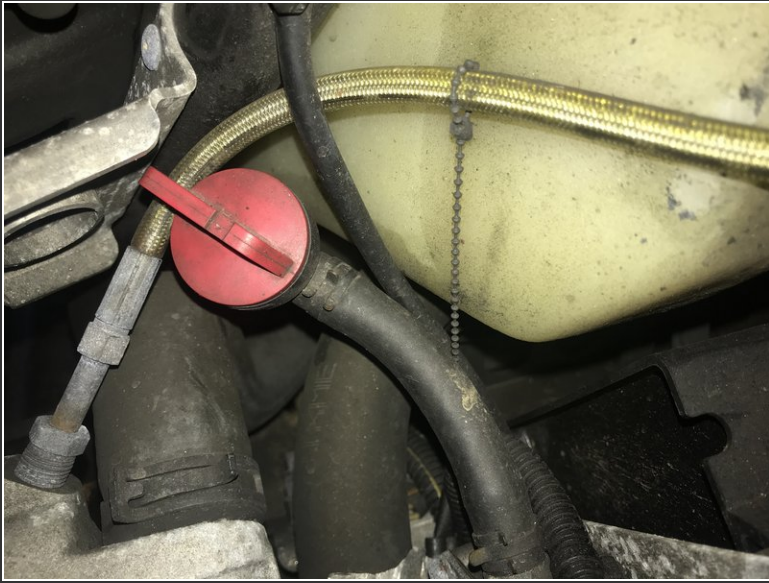


- Pull the rubber strap off of the air box.
- Remove the airbox by pulling the box up and out towards yourself.

⚠ Caution: Be careful of pulling wires and cables.



## Step 7



- Turn the fuel off by turning the red fuel knob to the off position so that it is perpendicular to the hose.
- ⓘ Note: straight piece on knob that is in line with hose means open. Perpendicular to the fuel hose means it is closed. (i.e. picture 2)

## Step 8



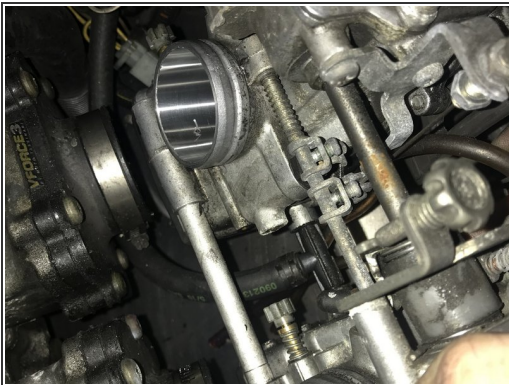
- Using a flat head screw driver, loosen the hose clamps on the carburetor boots so that it can be removed later.

## Step 9



- Using a 10 mm open ended box wrench, loosen the top and bottom nuts on the choke and throttle cable that are attached to the carburetor.

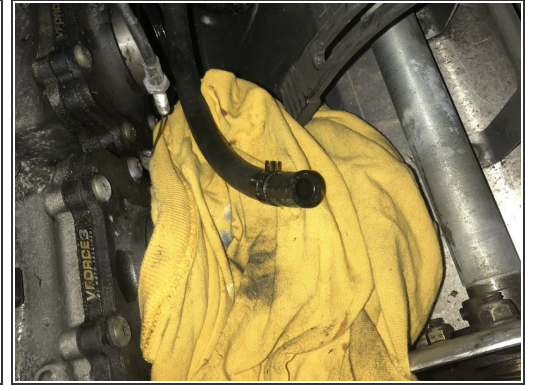
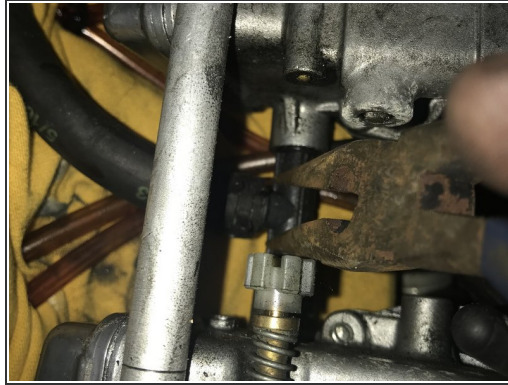
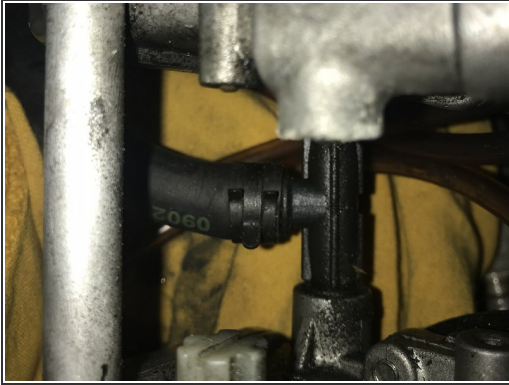
## Step 10



- Pull the carburetor off so that it can be rotated to the side.
- Pull the choke and throttle cables off by sliding cable through slots.

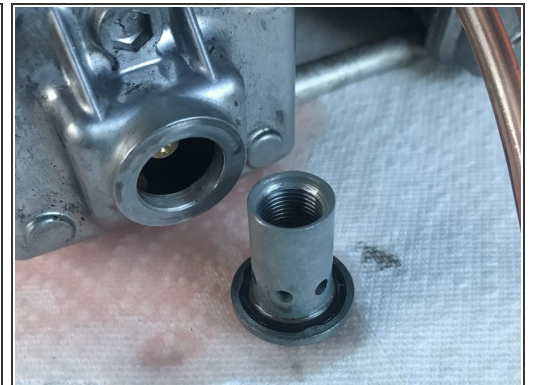


## Step 11



- Using a needle nose pliers, remove the hose clamp from the fuel hose that leads to the fuel rail.
- ⚠ Pull the fuel line off of the fuel rail connector. Be careful to not break the hose and/or connector.
- ⚠ Set a rag underneath the carb and fuel line to catch the fuel that pours out.

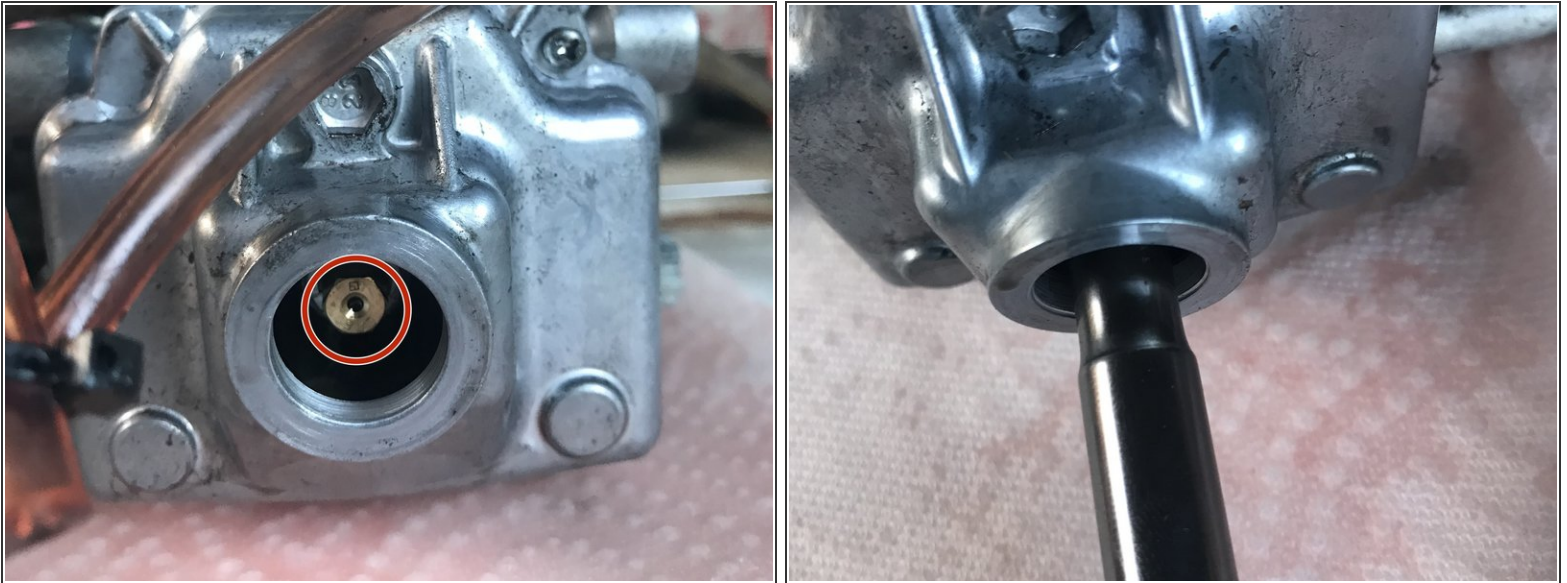
## Step 12



- Set the carb rack on paper towels in case fuel leaks out.
- On bottom side, take a 11/16" socket on a 3/8" ratchet to remove the bowls.

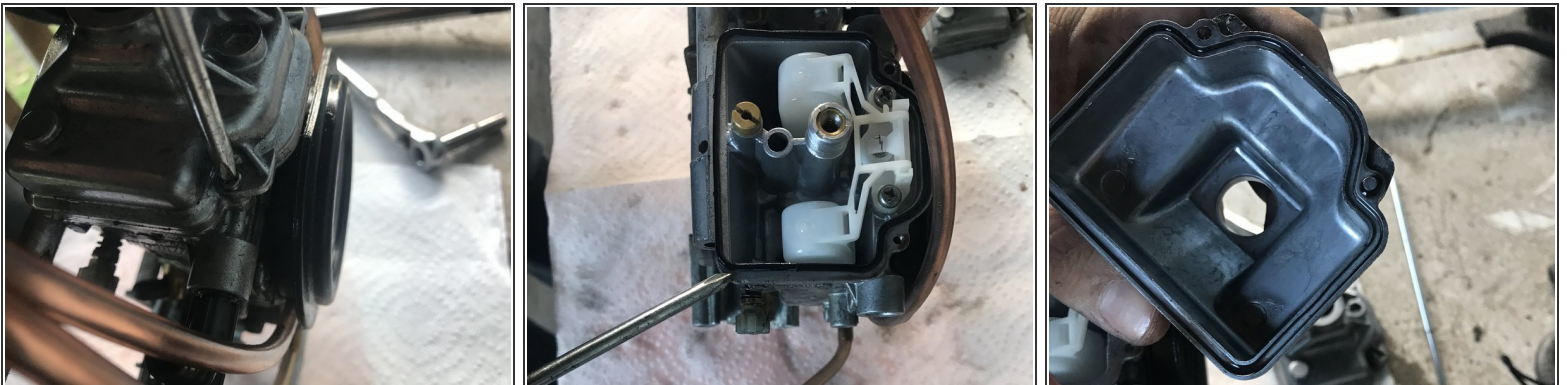


## Step 13



- Remove the main jet with a 1/4" deep socket on a 1/4" ratchet.

## Step 14

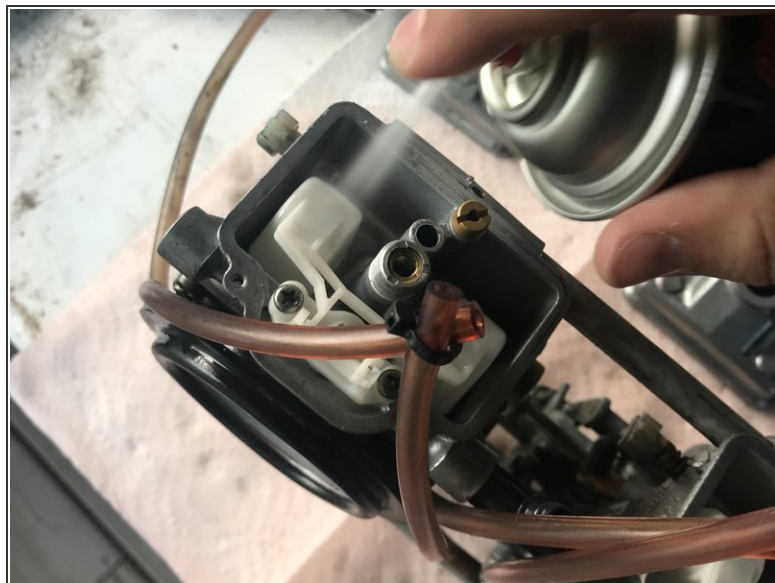
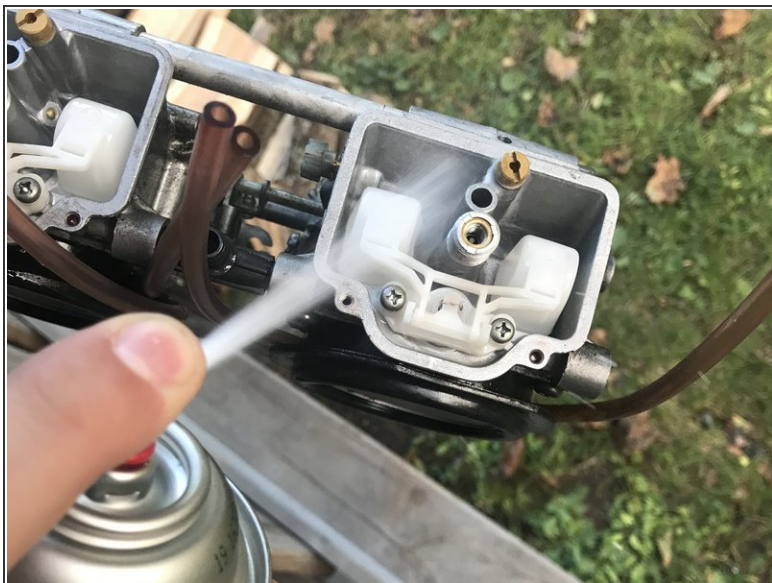


- Using a #2 Phillips head screw driver, remove the screw holding the bottom cover on.

⚠ Be cautious of the gasket falling out of slot on the cover.

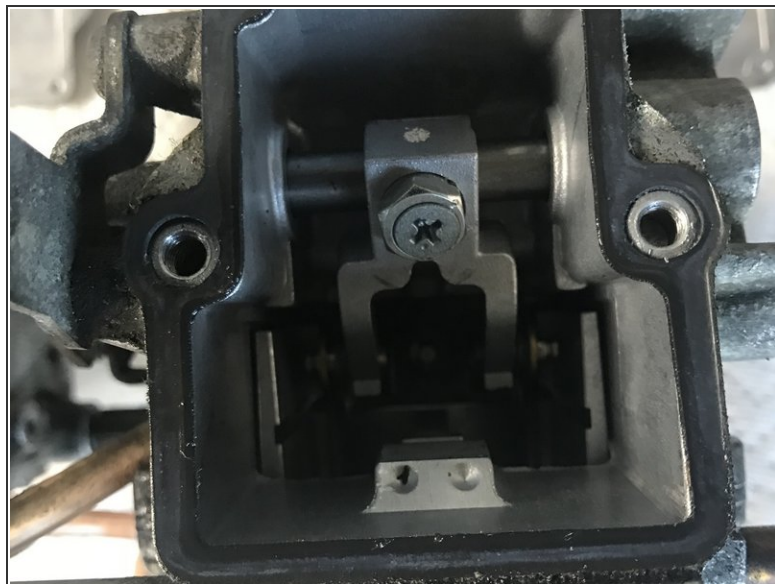
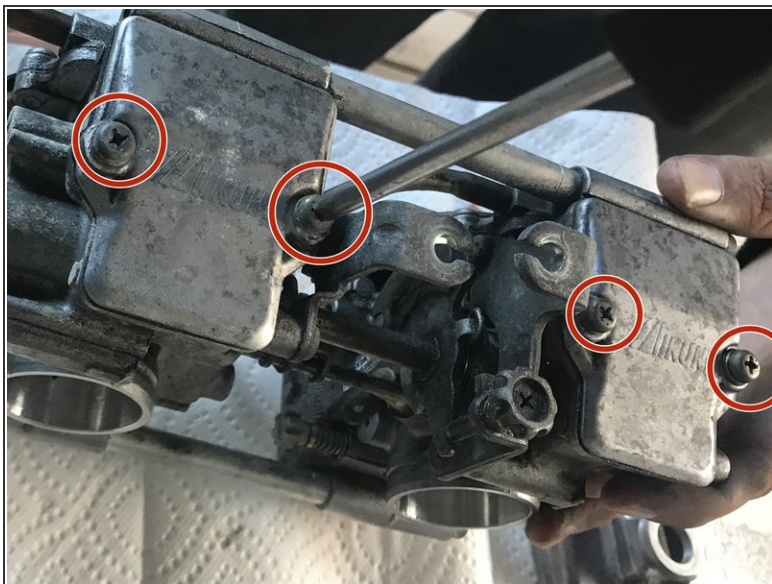


## Step 15



- Use the carburetor cleaner to spray the floats and pilot air jet.

## Step 16



- Remove the 4 screws using a #2 Phillips screw driver that connect the top plate to carbs.

⚠ Caution: the gasket can be removed with top cover plate.



## Step 17



- Spray the carb cleaner on the top part of the carb. Ensure clean mechanical action of needle guide.

## Step 18



- Spray carb cleaner on the bowls.

To reassemble your device, follow these instructions in reverse order.