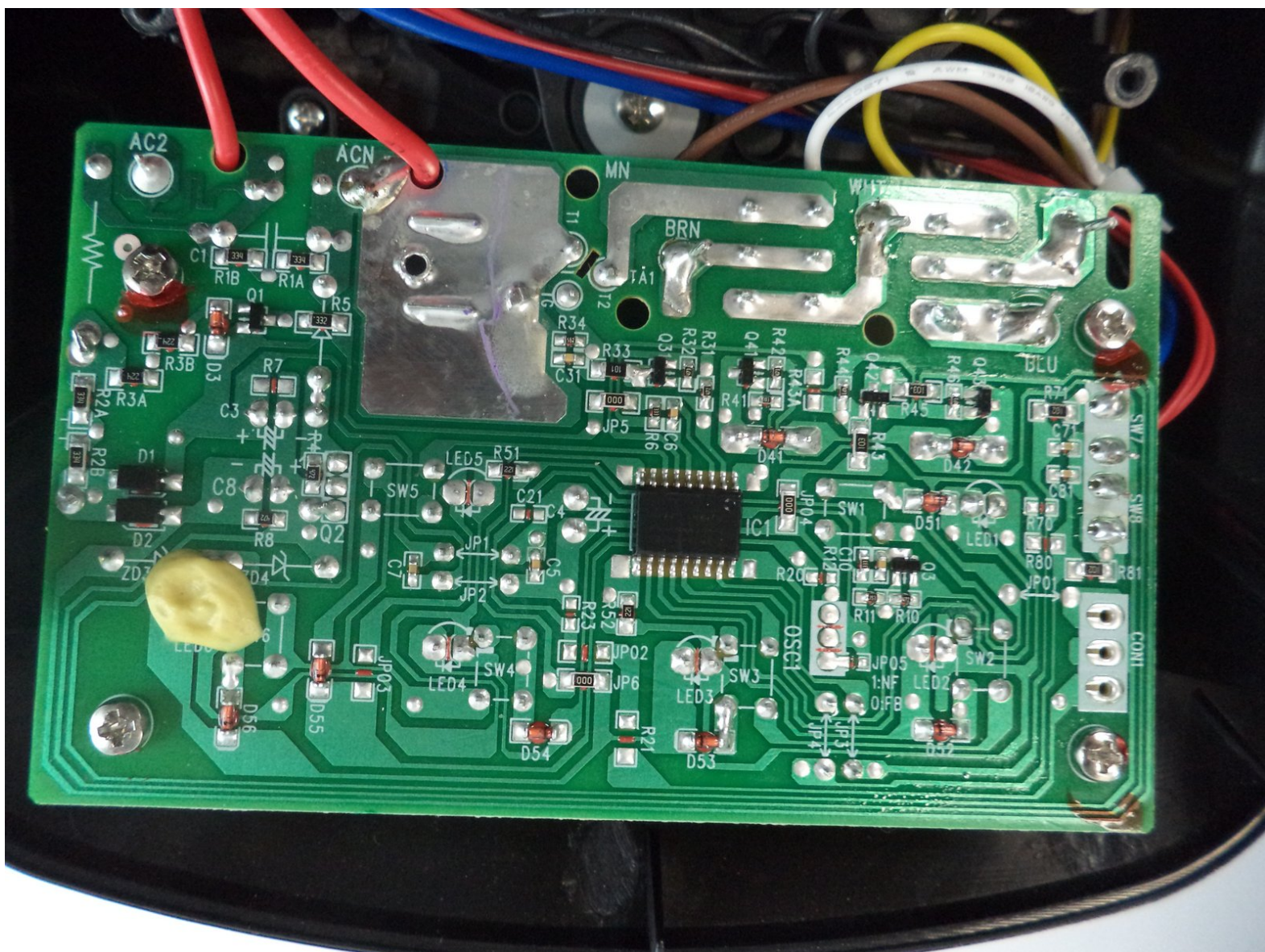




Ninja Mega Kitchen System BL770 Circuit Board Replacement

How to replace the Ninja Mega Kitchen System BL770 circuit board.

Written By: Tommee Walker



INTRODUCTION

In the chance that your circuit board stops working, this step-by-step guide will show you how to replace it. For soldering help, follow the [How to Solder and Desolder Connections](#) guide.



TOOLS:

- [Phillips #2 Screwdriver](#) (1)
 - [Soldering Iron](#) (1)
 - [T10 Torx Screwdriver](#) (1)
-

Step 1 — Circuit Base



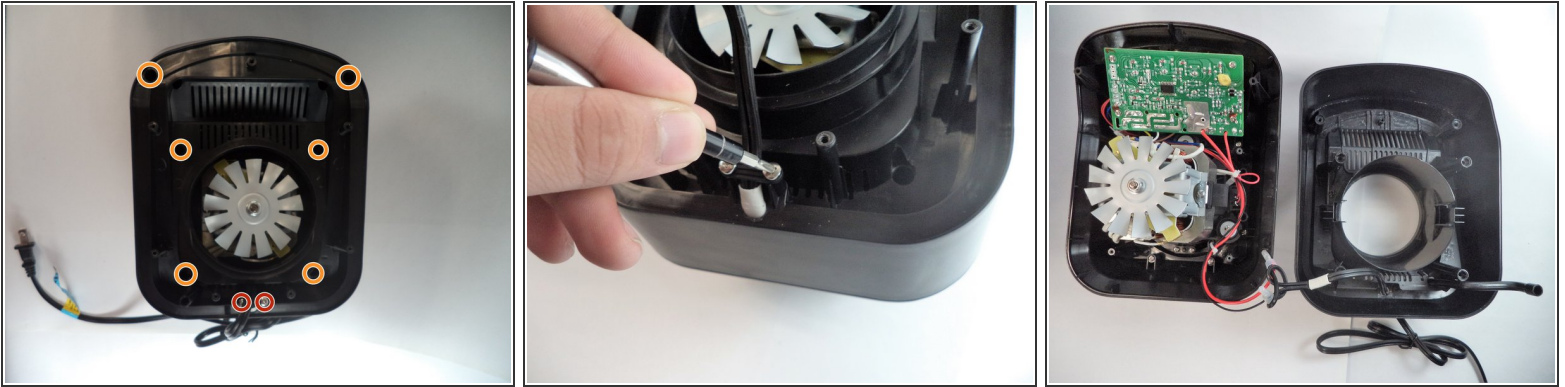
- Remove the five screws (13mm long, 6mm head) attaching the Base Cover using a Phillips screwdriver (Ph2).
- Remove the two screws (13 mm long, 6mm head) attaching the Base Cover using a T10 screwdriver.

Step 2



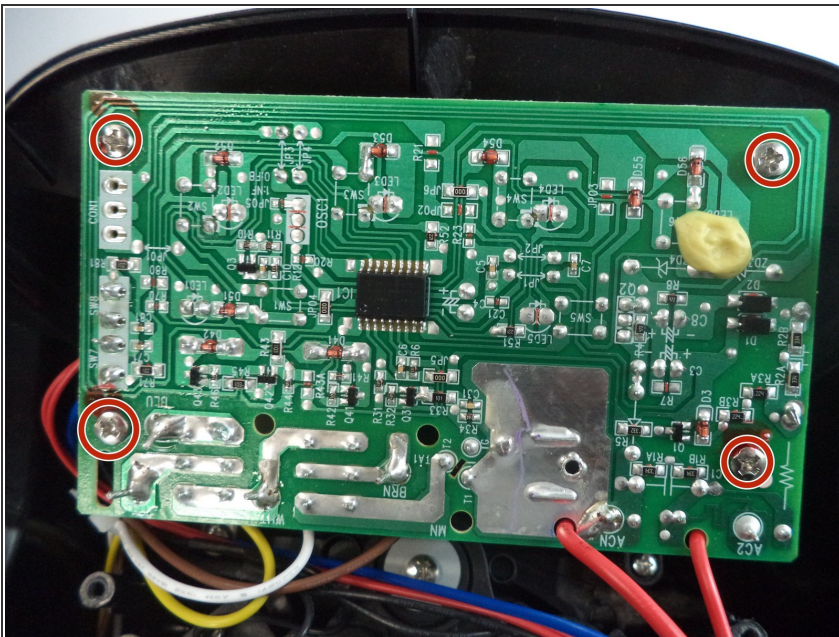
- Carefully remove the second layer from the base. You will not need a screwdriver for this step.

Step 3



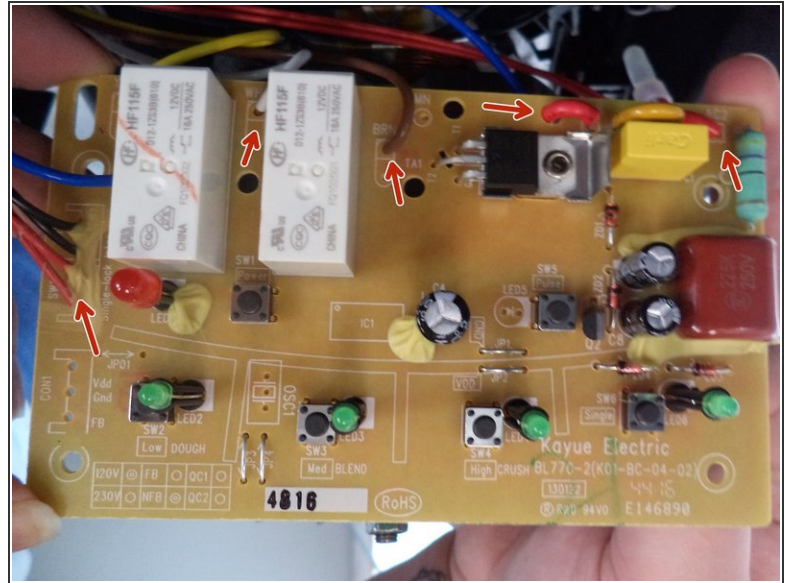
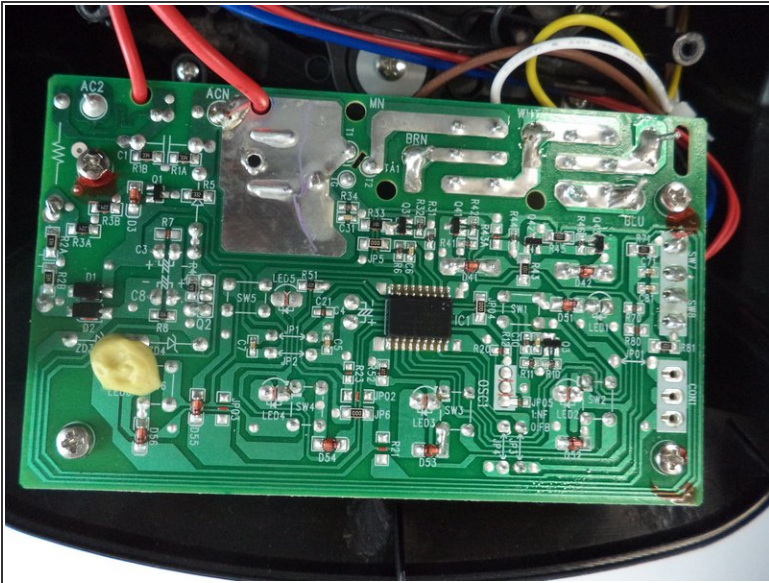
- Remove the 2 screws (13mm, 6mm head) connected to the plastic piece holding down the power cord.
- Then remove the additional 4 screws (13mm, 6mm head) and 2 screws (11mm, 5mm head) securing the base.
- Carefully lift the base up from the rest of the blender.

Step 4



- Remove 4 screws (11mm, 4mm head) connecting the circuit board to the base.

Step 5 — Circuit Board



- Cautiously desolder all the wires connecting the circuit board to the unit.
- Carefully slide the circuit board free of the wires and place the new board in.
- Solder the wires back onto the new board, keeping track of which wire goes where in order for your unit to properly function.

To reassemble your device, follow these instructions in reverse order.