



# Easier way to open

Easier way to open the scale.

Written By: Marina



---

## INTRODUCTION

Today the scales did not go anymore.

The display remained black.

So I had to find a way to disassemble.

Extra rausholen the Heißluftföhn and time consuming to heat the glass plate? It would have to be easier!



### TOOLS:

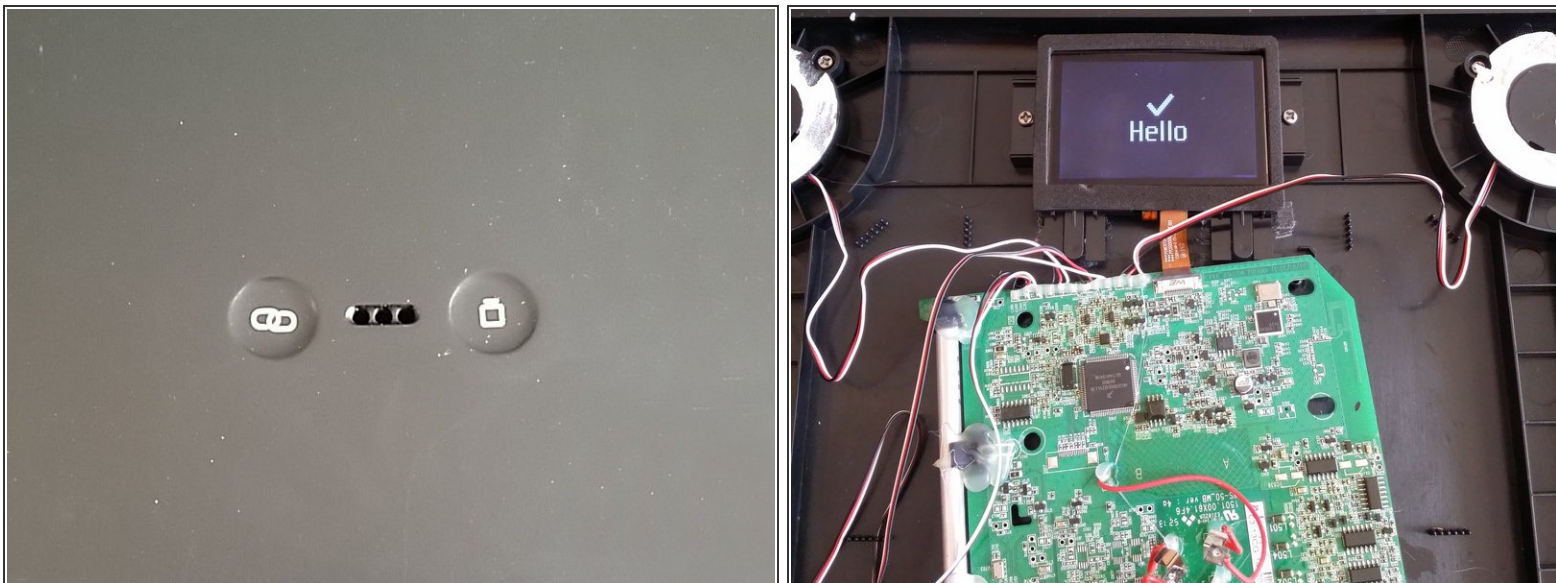
- [New Item](#) (1)
  - [New Item](#) (1)
-

## Step 1 — Open the balance



- Since it is not important in the balance to get the adhesive surfaces take a beveled spatula. It's much easier and faster.

## Step 2



- Contrary to the other instructions, the board is located directly on the plastic housing. Through the 3 holes water gets into the balance and through the adhesion it spreads over the complete underside of the board
- The Libra continues to change. Only this time too much water had penetrated which had spread under the board.
- Clean the underside of the board with acetone. Alternatively, isopropanol.
- After the board was dry, the scales spoke to me again. And so that water does not penetrate again, I taped the holes with silicone
- Finally, glue the round cap to the glass plate with a little silicone glue. Because even if the board has a silicone protective coating, it would not be good if Wasser came from above on the SMD components.

Repeat the steps in order to reassemble your device.