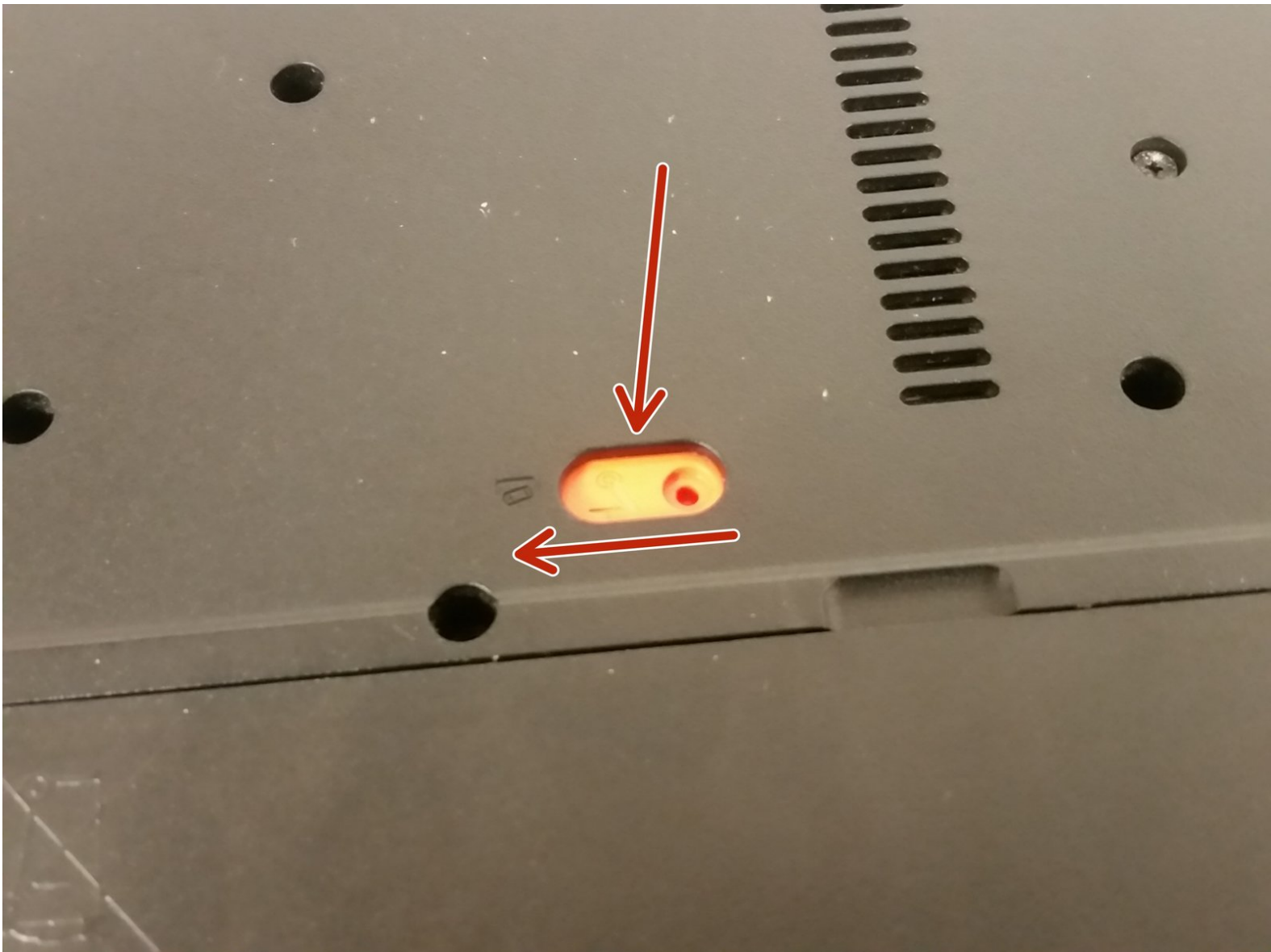




Gateway NE Series Battery Replacement

This guide teaches you how to replace the battery in a Gateway NE series laptop.

Written By: Joseph Sctbunio

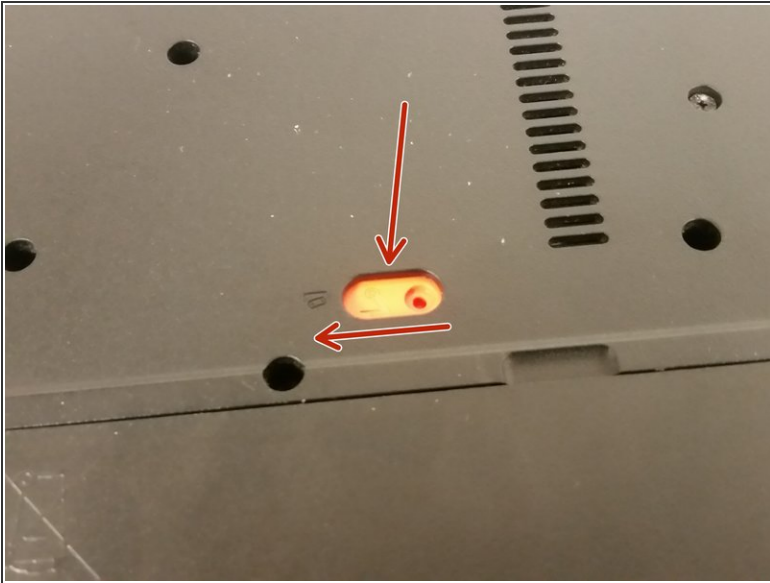




TOOLS:

- [Spudger](#) (1)
-

Step 1 — Remove battery



- With the battery side of the laptop facing you, use a small-tip screwdriver or spudger to push the battery latch to the left.
- Use your fingernail or a spudger to catch the battery after it lifts up. Pry the battery out. You're done!

To reassemble your device, follow these instructions in reverse order.