



Toshiba Satellite C655D-S5200 Hard Drive Replacement

This guide teaches you how to replace the hard drive in a Toshiba Satellite C655 series laptop.

Written By: Joseph Sctbunio





TOOLS:

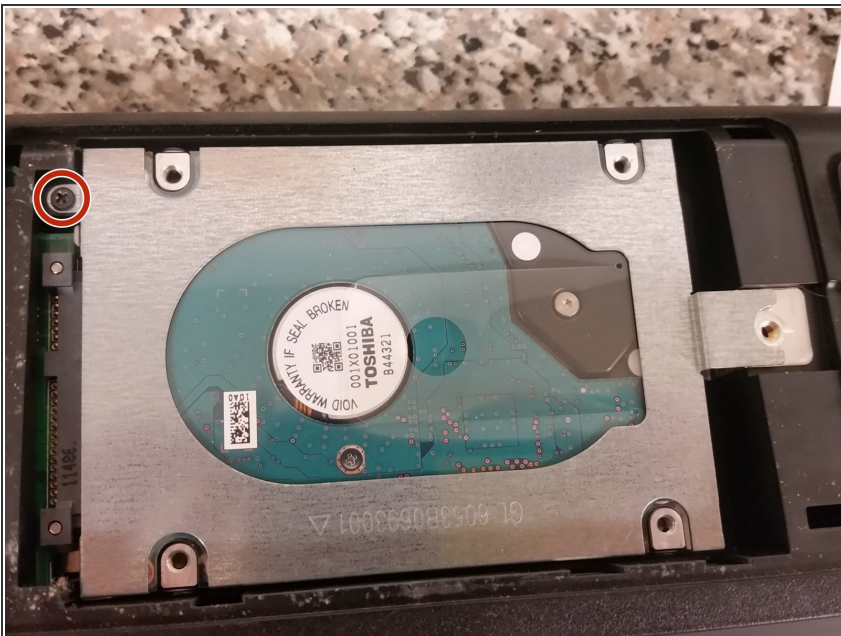
- [Essential Electronics Toolkit](#) (1)
-

Step 1 — Remove hard drive cover



- Remove the single screw securing the hard drive cover to the base.

Step 2 — Remove hard drive caddy



- Remove the single screw securing the hard drive caddy to the base.

Step 3 — Remove hard drive from caddy



- i This step is unnecessary if you're just removing the hard drive for testing purposes, or to replace the motherboard.
- Remove the four screws securing the hard drive to the caddy.
- You're done!

To reassemble your device, follow these instructions in reverse order.