



Sony Vaio Fit 13A SVF13NA1EL Battery Replacement

Is your computer not powering on? It may just need a charge. If charging does not work, the battery may need to be replaced.

Written By: Olivia



INTRODUCTION

If your computer is not powering on or holding a charge then you might need to replace your battery.



TOOLS:

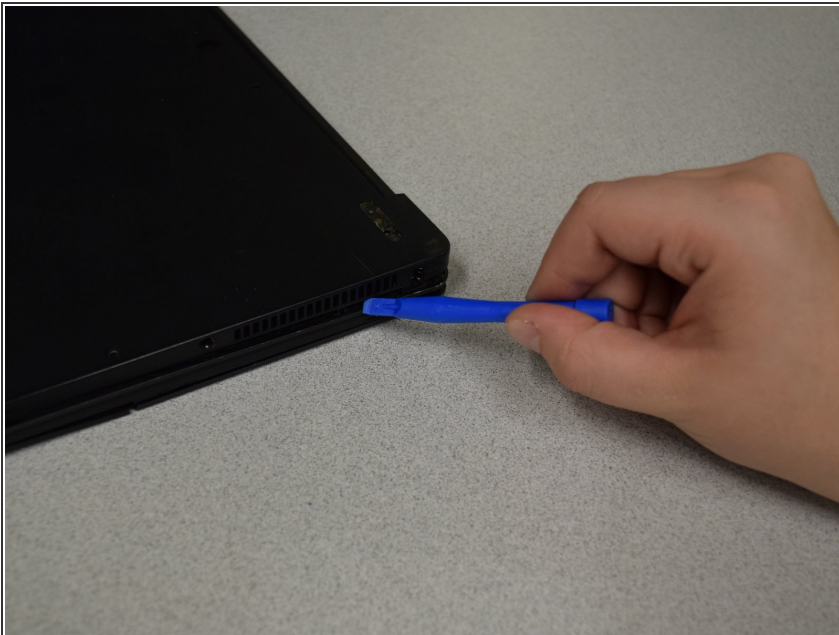
- [Spudger](#) (1)
 - [JIS #1](#) (1)
 - [JIS #0 Screwdriver](#) (1)
-

Step 1 — Battery



- Begin by turning the laptop top-down on a flat surface.
- Use a JIS #1 screwdriver to remove the 4 screws circled in red
- Use a JIS #0 screwdriver to remove the 8 screws circled in orange
- ⓘ Many of these screws are located underneath the rubber pads on the device.
- ⚠ Keep track of the locations of the screws removed for ease of reassembly.

Step 2



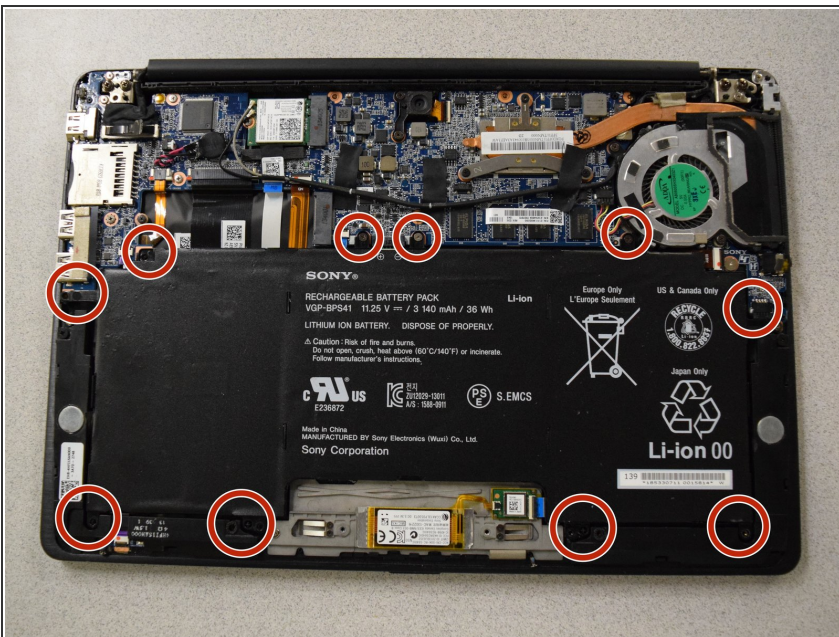
- Use a spudger to carefully remove the back cover of the laptop.
- ⚠ Be careful when lifting around the ports and headphone jack to avoid causing damage to these components.

Step 3



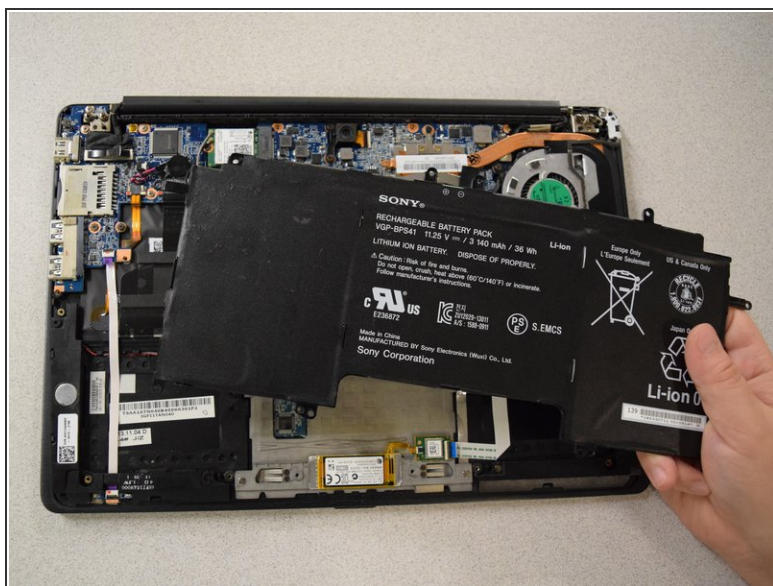
- Lift up back cover to access internal components of the laptop.

Step 4



- Remove the screws in the circled areas using the J0 Screwdriver to release the battery.

Step 5



- Lift the battery from the laptop to remove.
- Replace if necessary.

To reassemble your device, follow these instructions in reverse order.