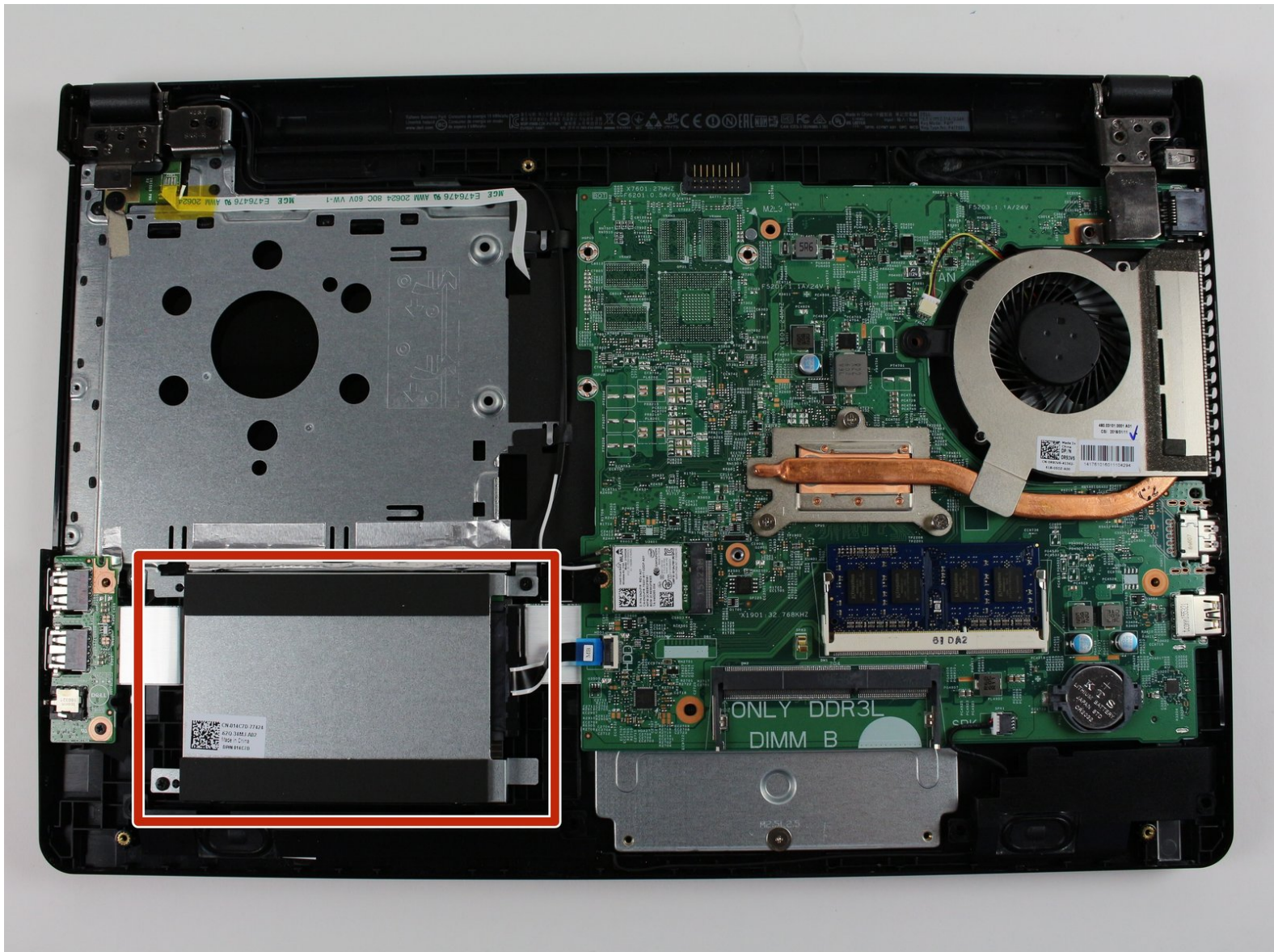




Dell Inspiron i3558-5500BLK Hard Drive Replacement

This guide will show you how to remove and replace the hard drive for the Dell Inspiron i3558-5500BLK Laptop.

Written By: Joe Giesa



INTRODUCTION

This guide will show you how to remove and replace the hard drive for the Dell Inspiron i3558-5500BLK Laptop.

WARNING: Static electricity can damage the electronic components of this model. Before beginning these procedures, discharge any built up static electricity by briefly touching a grounded metal object. For example, you can touch the metal frame inside the case of most desktop computers, or wear an anti-static wristband.



TOOLS:

- [Phillips #0 Screwdriver](#) (1)
 - [Spudger](#) (1)
-

Step 1 — Keyboard



- With the laptop open and facing upright, use the Spudger to pull at the notches shown in the image.

Step 2



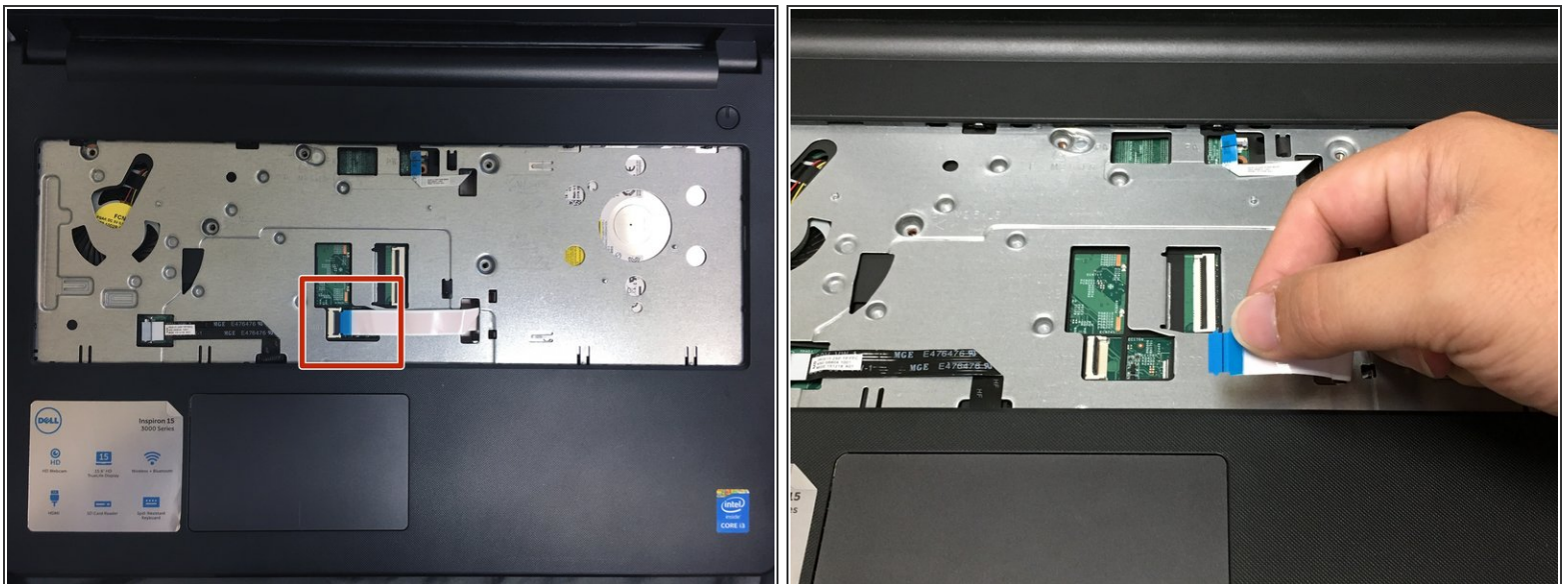
- Gently turn the keyboard over to reveal the ribbon cable underneath. Remove the cable from the motherboard by lifting the white release tab and gently pulling the cable away from the socket.
- Lift the keyboard away from the baseboard to remove.

Step 3 — Battery



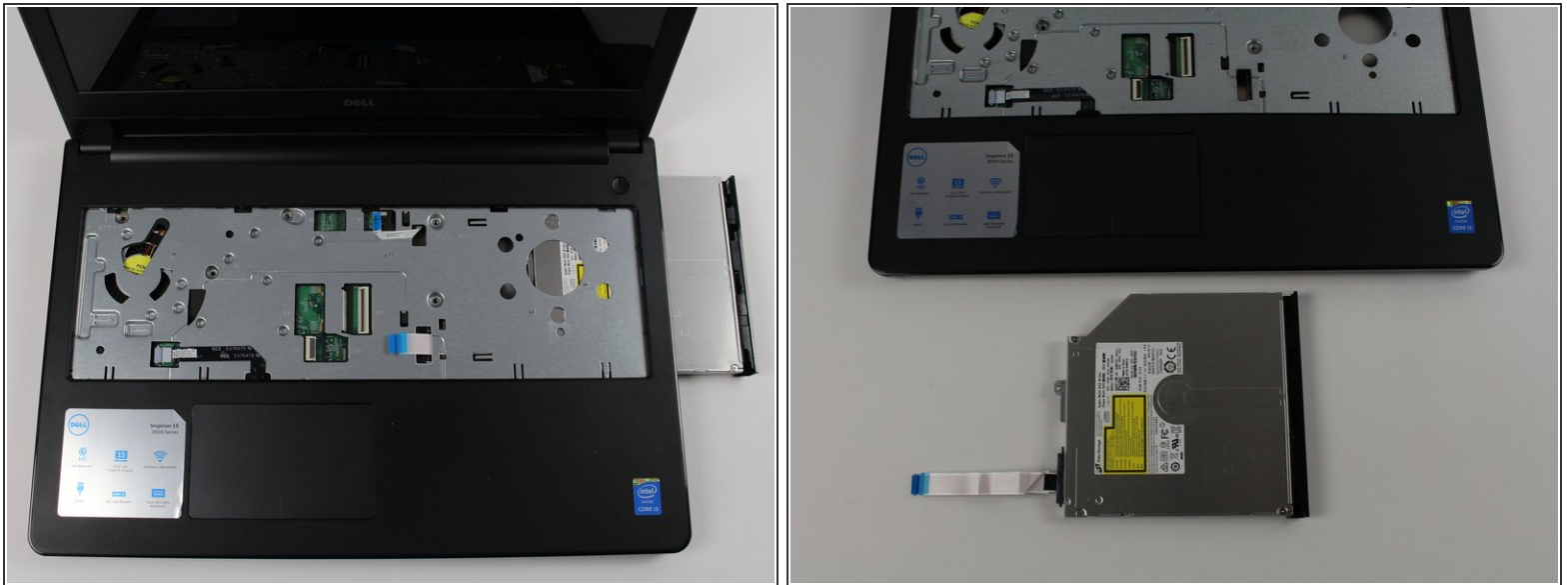
- With the back of the laptop facing upright, press the switch shown to loosen the battery and remove it.

Step 4 — Back Cover



- With the laptop facing upright - remove the ribbon cable from the optical drive by lifting the white release tab and gently pulling the cable away from the socket.

Step 5



- Slide the optical drive out of the port on the right-side of the laptop.

Step 6



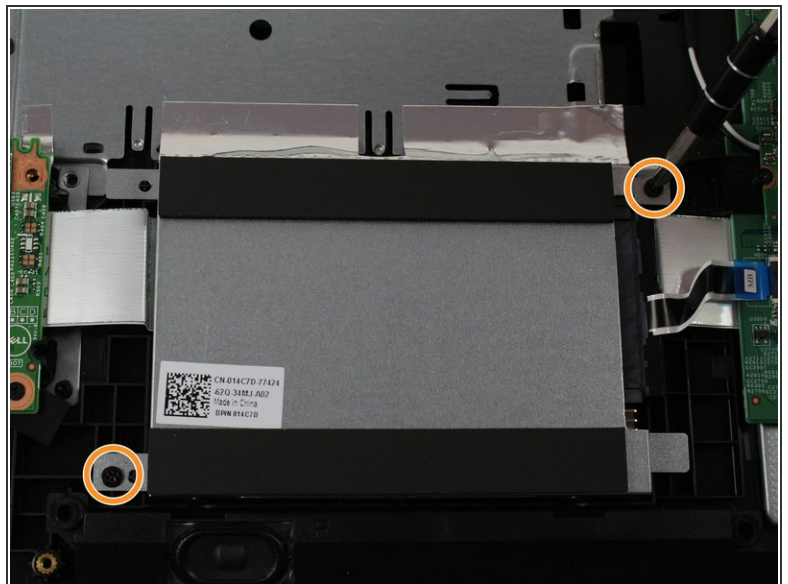
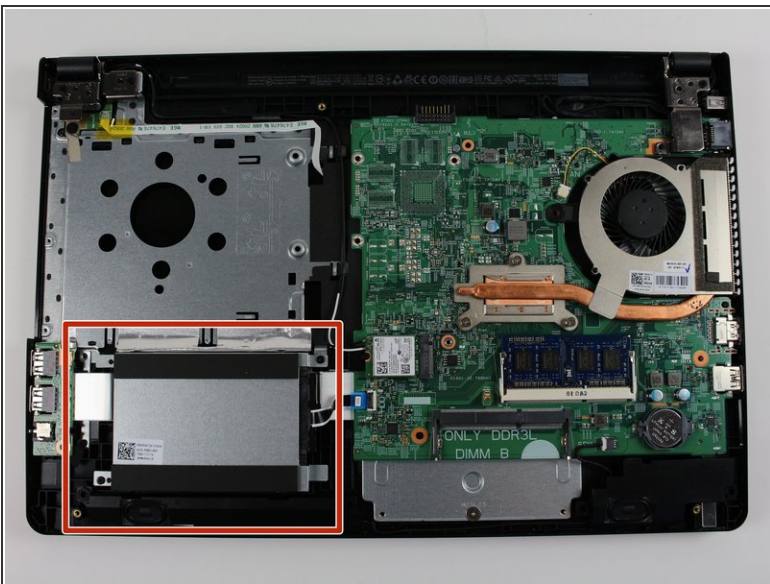
- With the back of the laptop facing upright, remove the following screws:
 - Ten 0.5 mm Phillips screws from the backboard
 - One 0.2 mm Phillips screw from the battery port
 - Three 0.1 mm Phillips screws from the optical drive slot.

Step 7



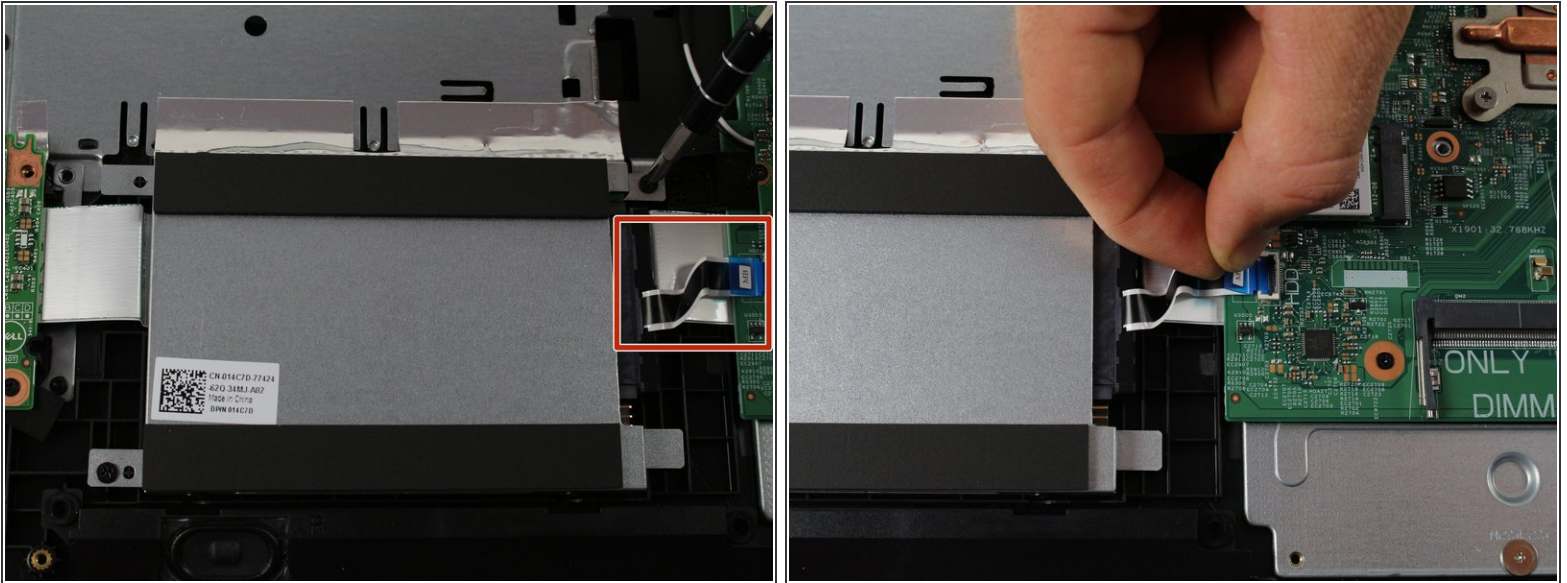
- Gently pry the back cover from the opposite side of the battery to reveal the internal components.

Step 8 — Hard Drive



- Identify the hard drive as shown in the image.
- Remove the 0.5 mm Phillips screws that secure the hard drive to the palm-rest.

Step 9



- Disconnect the hard drive ribbon cable from the motherboard as shown by lifting the release tab and gently pulling the cable away from the socket.

⚠ To avoid data loss, do not remove the hard drive while the computer is on, or in sleep mode.

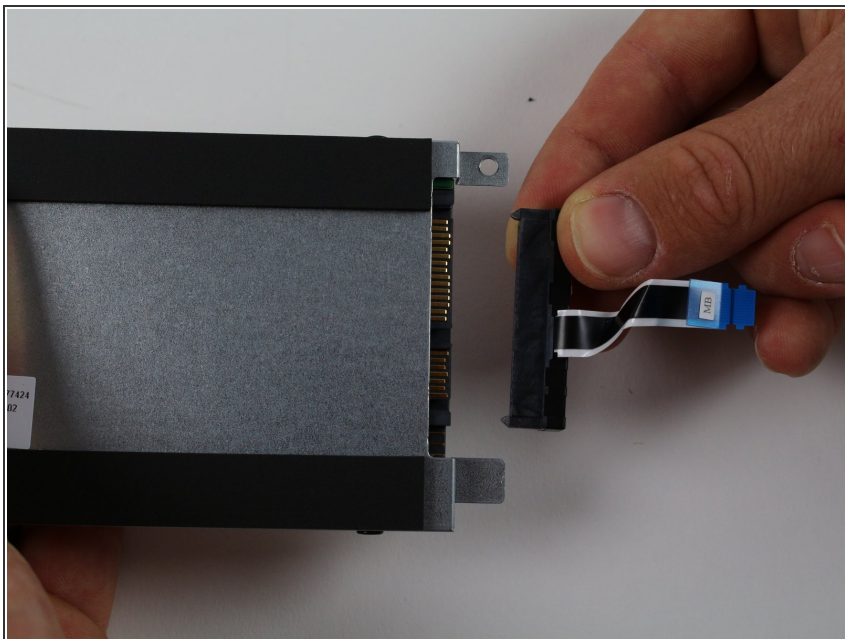
Step 10



- Carefully lift the hard drive off the palm rest.

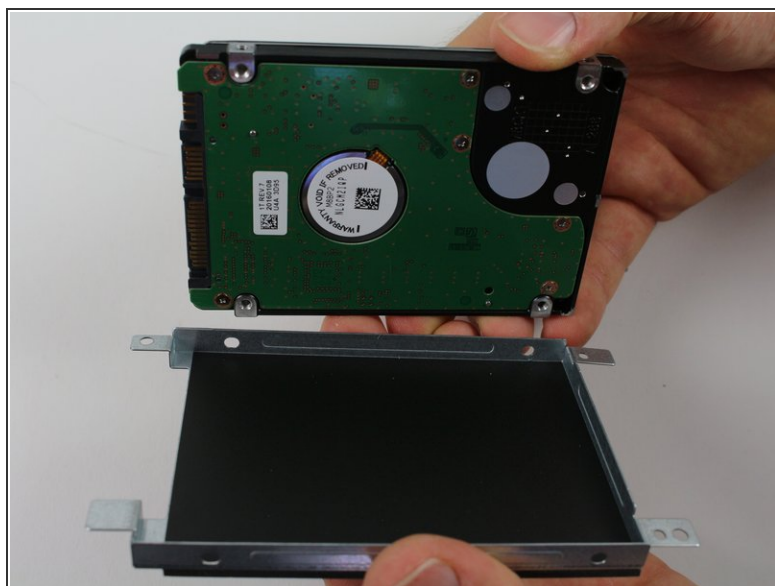
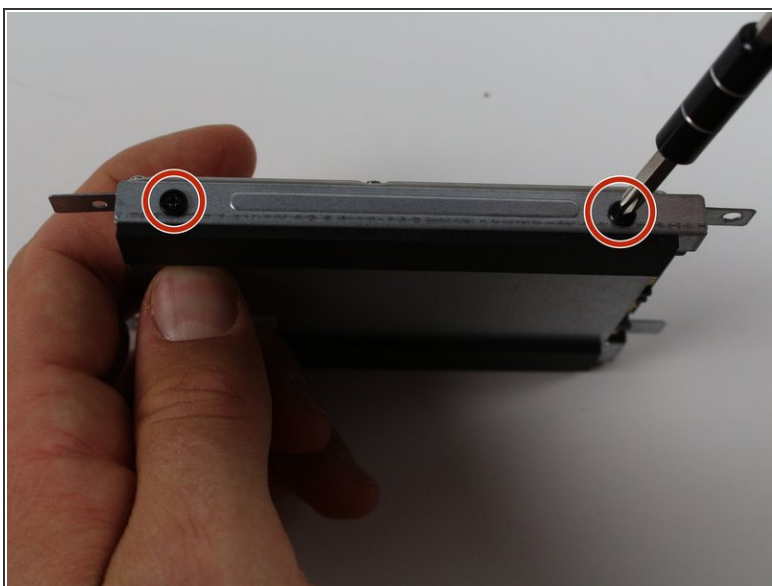
⚠ Hard drives are fragile. Exercise care when handling the hard drive.

Step 11



- Disconnect the interposer from the hard drive.

Step 12



- Remove the 0.2 mm Phillips screws that secure the hard drive bracket to the hard drive.
- Lift the hard drive bracket off of the hard drive.

To reassemble your device, follow these instructions in reverse order.