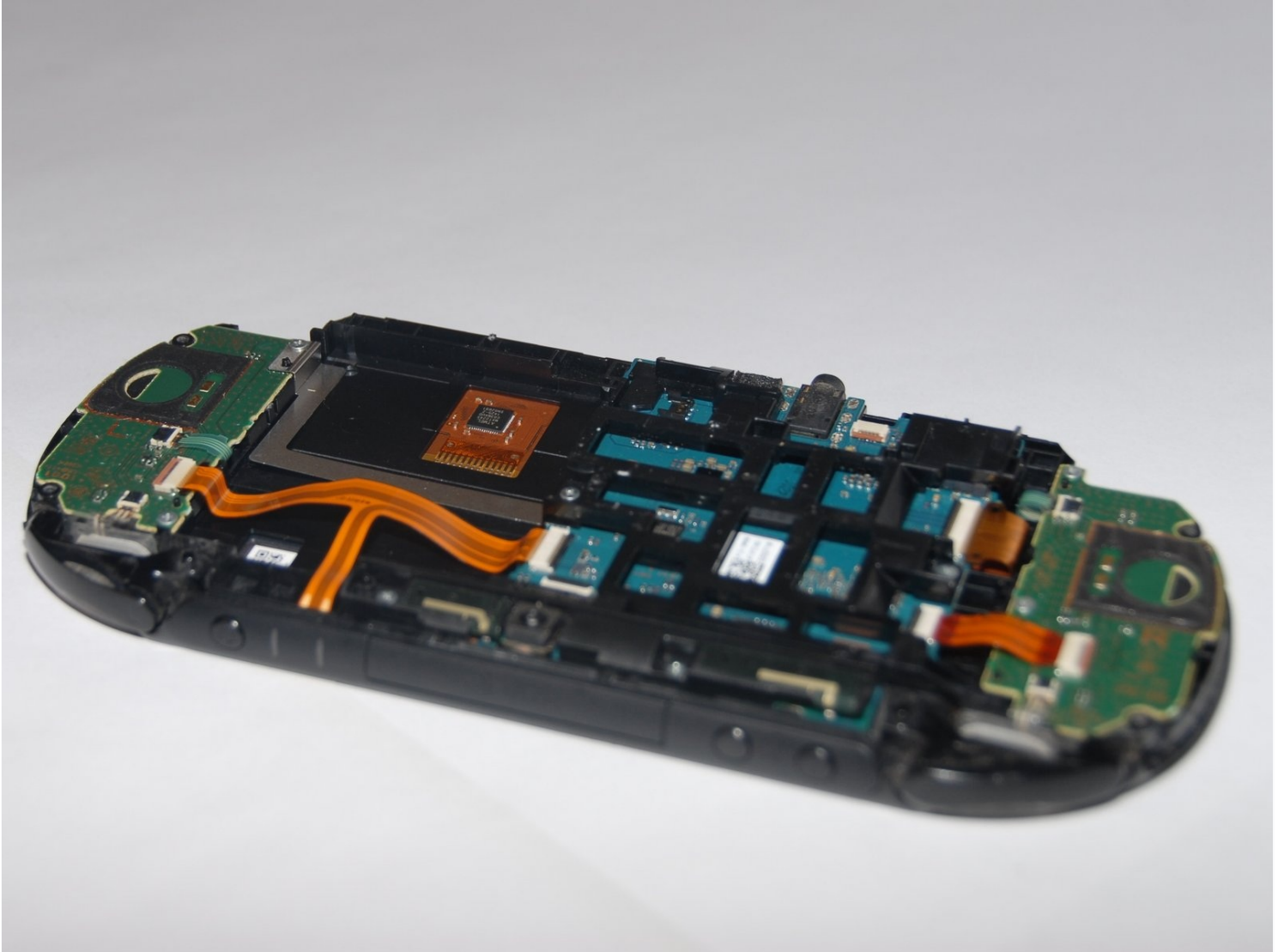




PS Vita Slim Joystick Replacement

Note::: taking apart your device may void the...

Written By: Daniel Woodard



INTRODUCTION

Note::: taking apart your device may void the warranty on the device, please proceed with caution and consider having it sent in first if possible to be worked on by the company. This guide's goal is to help you fix your joystick problems. If that means taking them out to simply clean them or replacing them all together. The joysticks should be a simple procedure. As long as you take your time and you carefully interact with the system you should be fine.

TOOLS:


JIS #00 Screwdriver (1)
iFixit Opening Tool (1)
Spudger (1)
Tweezers (1)

PARTS:

PlayStation Vita Slim Joystick (1)

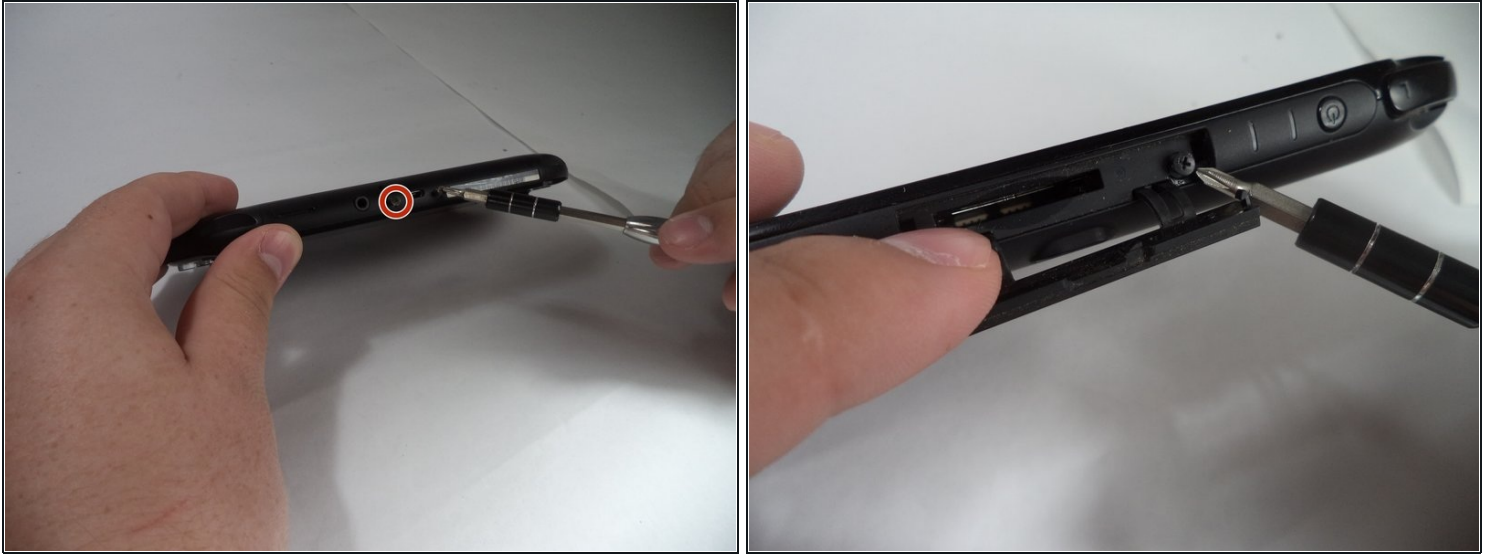
Step 1 — Back Panel



 Please make sure the system is completely powered off and all SD storage cards are removed before starting the removal process

- All 6.35mm screws were removed using a J00 bit from the iFixit pro toolkit.
- There are four screws on the back of the device, remove them as shown.

Step 2



- There are two screws on the bottom, near the charging port, remove them using the J00 screwdriver on the 6.35mm screws from the iFixit pro toolkit.
- Finally, remove the top screw under the dust cover using the J00 screwdriver on the 6.35mm screws from the iFixit pro toolkit.

Step 3



❗ The next step will require the opening tool.

⚠ Please carefully separate the back from the front completely. You will need to disconnect the small ribbon cable on the inside before completely removing the back. Otherwise you may end up hurting the ribbons on the inside.

❗ While separating the back, carefully pry all the way around the back. You will hear popping noises while going around and this is a good sign.

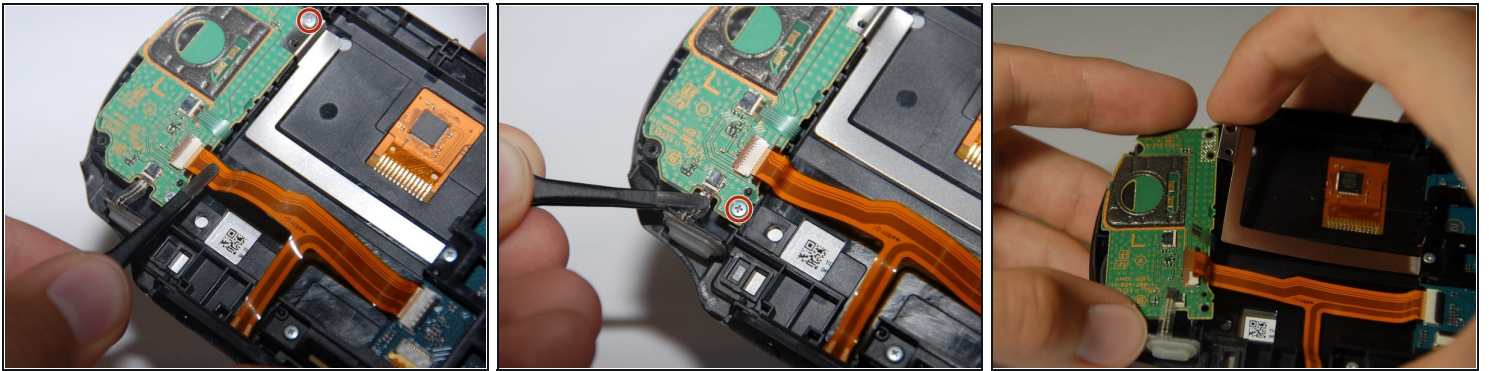
- Upon removing the back panel you will need to slowly and carefully remove the ribbons connecting the hardware to access the needed parts to be repaired.

Step 4



- Once the ribbons have been removed, then the back is fully removed and you can access the hardware within.

Step 5 — Joystick

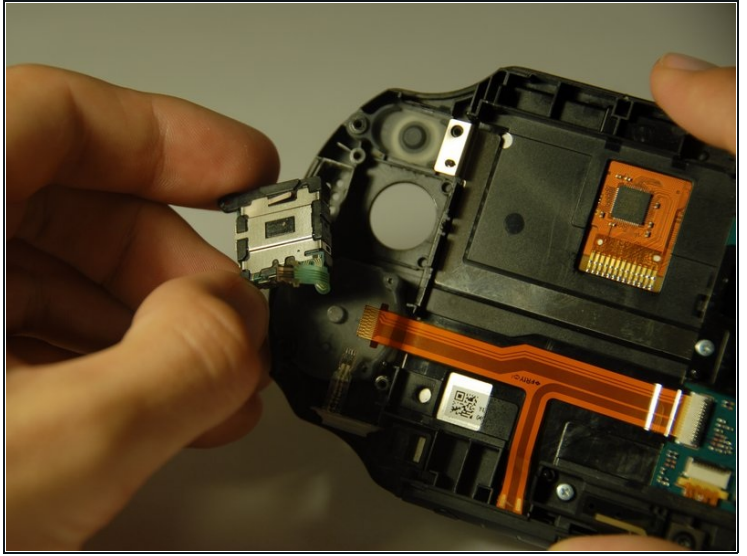
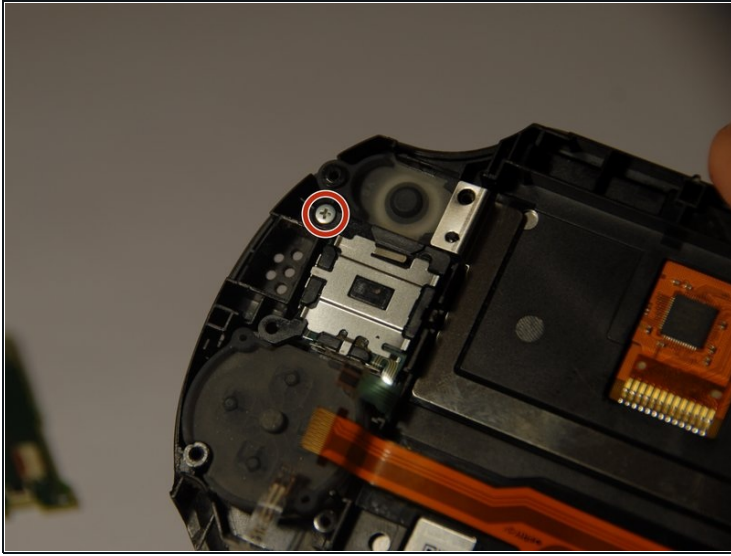


① Starting with the left joystick.

② There is a green casing holding in the joystick it will need to be removed to allow access .

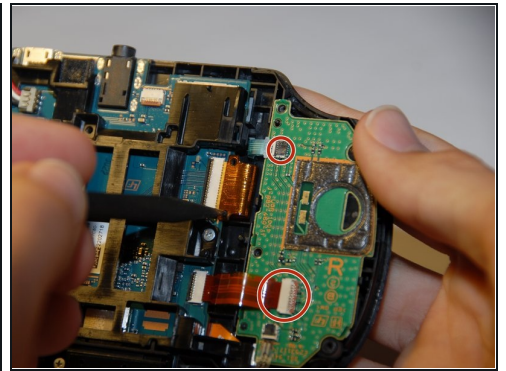
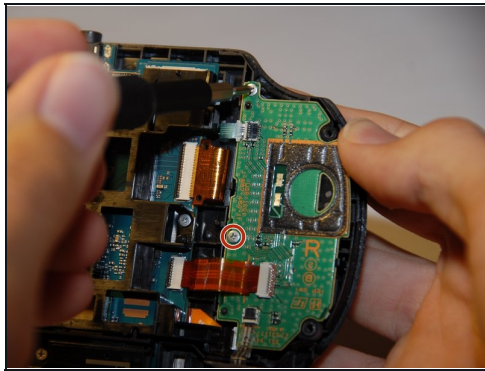
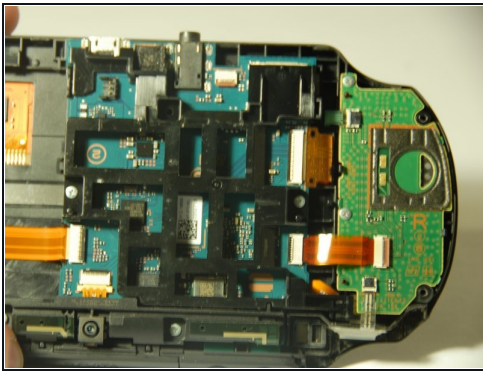
- There are 3 ribbons holding the section together. Remove them carefully.
- Next unscrew the two screws holding down the casing. They will both still be 6.35 mm screws and will be able to be taken out by a J00 bit from the iFixit pro toolkit.
- Now carefully lift the metal piece holding down the green casing, it will be the last resistance. Lift out the green casing now.

Step 6



- Once the casing has been removed there will be one more screw to be removed. It will be a 6.35 mm screws that requires a J00 screwdriver from the iFixit pro toolkit.
- Now simply and carefully take out the joystick out.
- With the joystick taken out you can now do what is needed on the left joystick, or even replace it.

Step 7



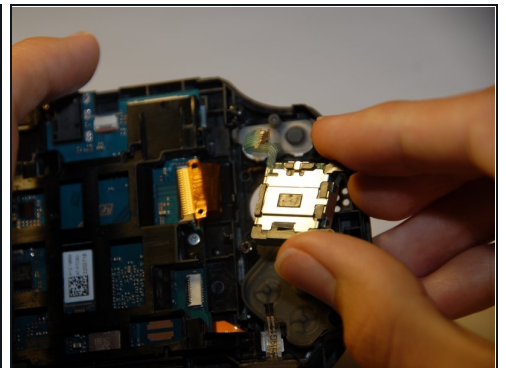
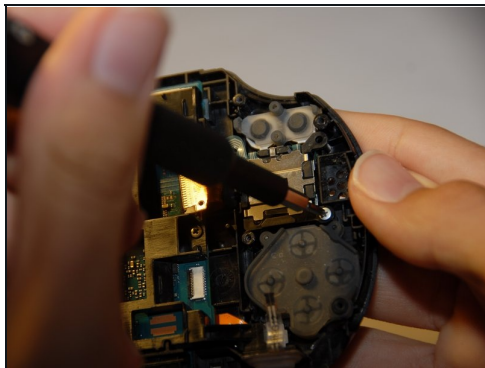
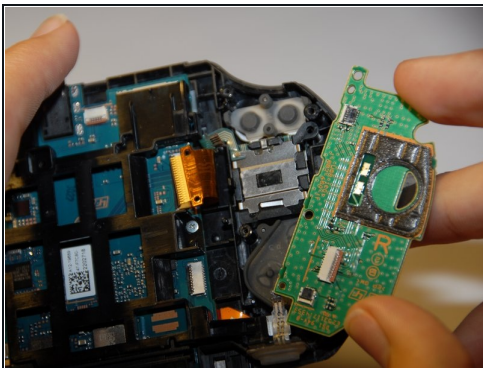
① Switching over to the right joystick.

① There will be a green casing containing the joystick. First it must be removed.

⚠ Carefully remove the ribbons from the entire section.

- Proceed to remove the two screws holding the casing down. They will be 6.35 mm screws and can be removed using a J00 bit.

Step 8



- Once the casing is off, there will only be one more screw to take off. It will also be a 6.35 mm screw that uses the J00 bit from the iFixit pro toolkit.
- Now simply remove the joystick from the device .
- Once the joystick is removed you can do what is needed to the right joystick part, or even replace it if needed.

To reassemble your device, follow these instructions in reverse order.