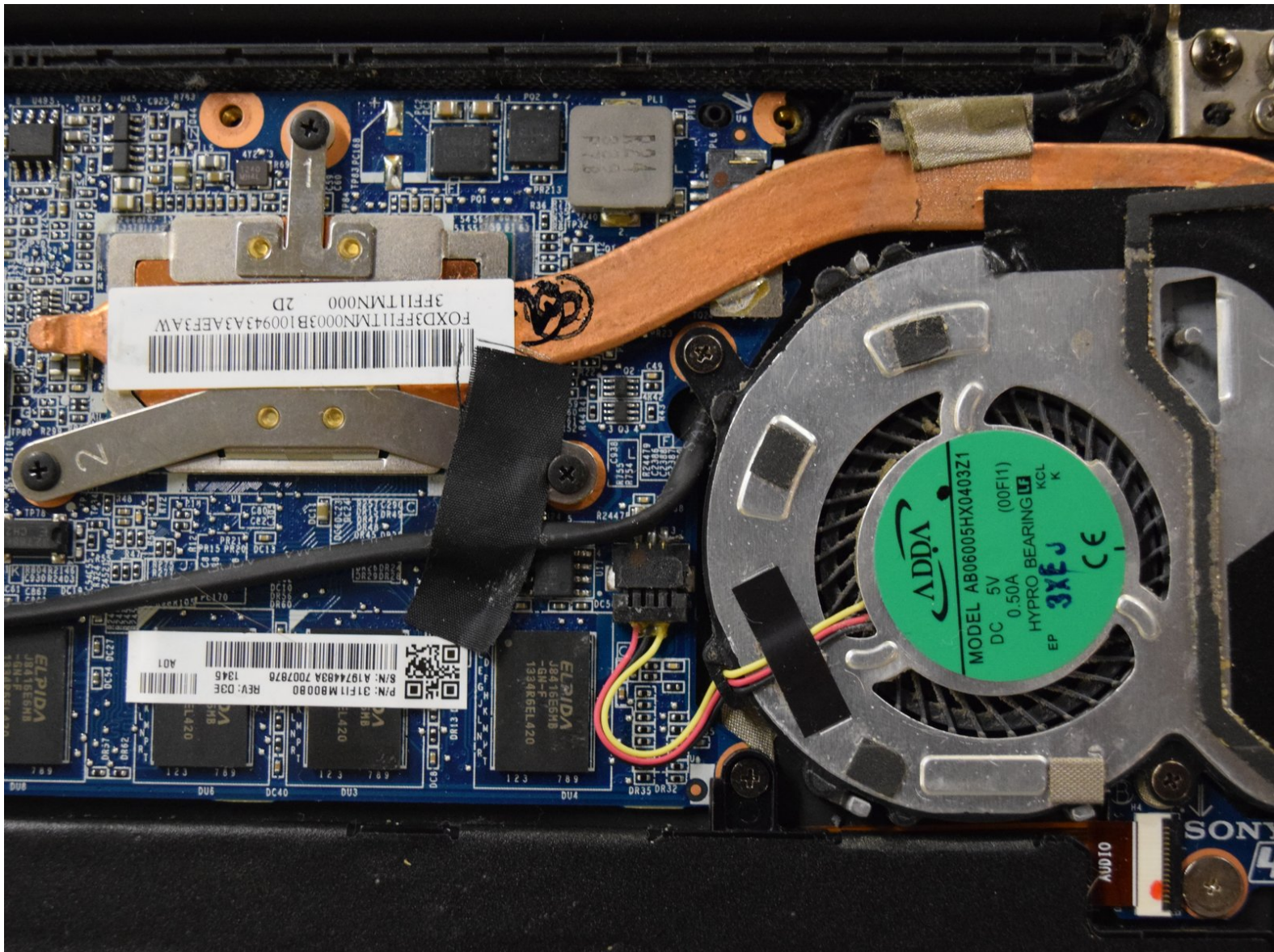




# Sony Vaio Fit 13A SVF13NA1EL Fan Replacement

Follow this guide if you need to replace the fan of your Sony Vaio Fit 13A SVF13NA1EL.

Written By: Olivia



## INTRODUCTION

If your Sony Vaio Fit 13A ( model SVF13NA1EL) is making excessive noise or is getting too warm, as described in the [troubleshooting page](#) for this laptop, the problem may be caused by a dirty or broken fan. This guide will show you how to open your laptop and clean the fan. If cleaning does not fix the problem then this guide will also show how to replace the fan.

Before beginning make sure the laptop is powered off.



### TOOLS:

- [Microfiber Cleaning Cloths](#) (1)
- [iFixit Opening Tools](#) (1)
- [JIS #1](#) (1)
- [JIS #0 Screwdriver](#) (1)
- [Isopropyl Alcohol](#) (1)



### PARTS:

- [Sony vaio fan with heatsink](#) (1)



## Step 1 — Fan



- Begin by laying the laptop top-down on a flat surface.
- Use a JIS #1 screwdriver to remove the 4 screws circled in red from the back cover.
- Use a JIS #0 screwdriver to remove the 8 screws circled in orange.
- ⓘ Many of these screws are located underneath rubber pads on the device.
- ⚠ Keep track of the locations of the screws removed for ease of reassembly.

## Step 2



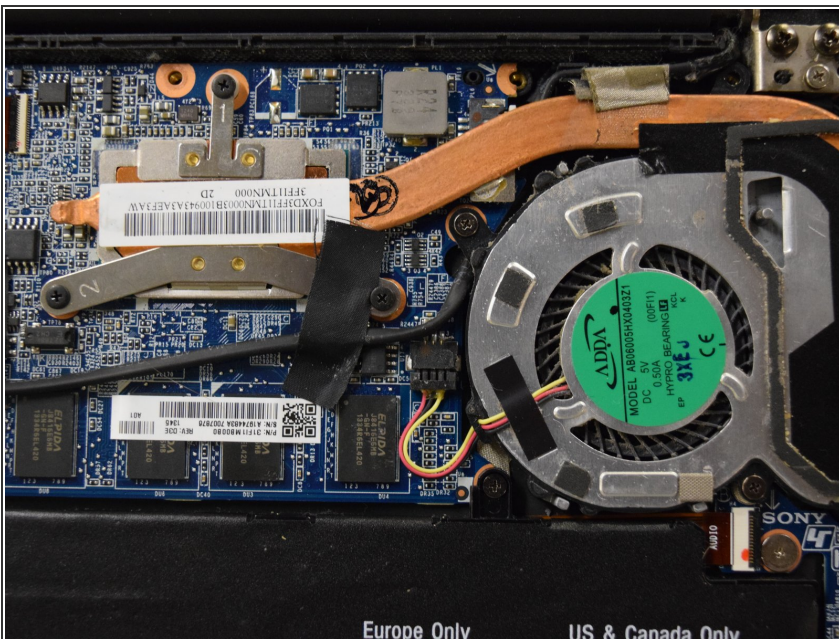
- Use the plastic opening tool to carefully remove the back cover from the laptop.
- ⚠ Be careful when around the ports and headphone jack to avoid causing damage to these components.

## Step 3



- Lift up the back cover to access internal components of the laptop.

## Step 4



- Dab isopropyl alcohol on a microfiber cloth and gently clean the fan blades and vents.

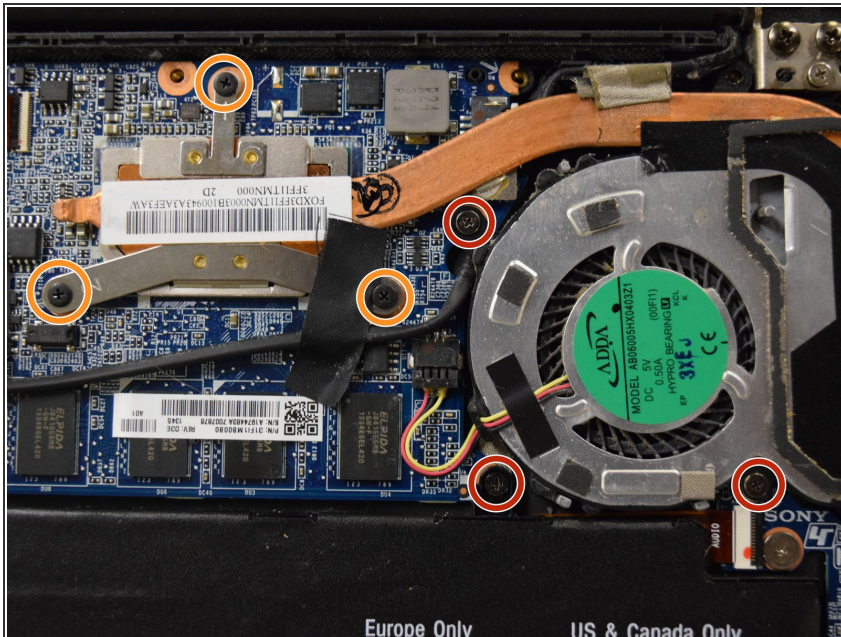


## Step 5



- Follow steps one through three in reverse order to reassemble and test if the problem is solved.
- If the problem is not resolved repeat steps one through three and continue on to step six.

## Step 6



- Pull back the pieces of tape, and remove the 3 screws around the fan (red).
- Remove the 3 screws surrounding the attached heat sink (orange) with the screwdriver.

## Step 7



- With the aid of a the opening tool, carefully unplug the fan connector.

## Step 8



- Carefully lift out the old fan.

To reassemble your device, follow these instructions in reverse order.