



Samsung Galaxy Mega 2 LCD/Digitizer Replacement

This repair guide demonstrates how to replace...

Written By: Taylor Powell



INTRODUCTION

This repair guide demonstrates how to replace the LCD/Digitizer on the Galaxy Mega 2. The repair involves removing the screen in order to get to the LCD. A few screws must be removed in order to take out the part.

TOOLS:

[Heat Gun](#) (1)

[iFixit Opening Tool](#) (1)

[iFixit Opening Picks \(Set of 6\)](#) (1)

[Tweezers](#) (1)

Step 1 — LCD/Digitizer



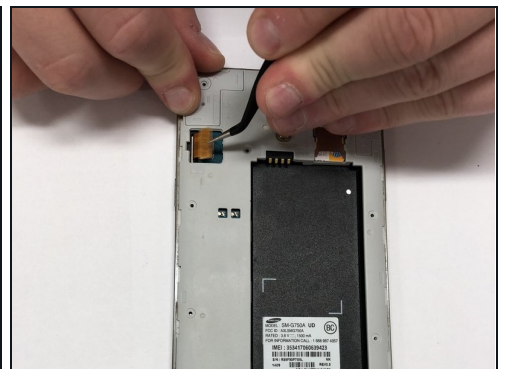
- ① Before beginning, make sure the phone is turned off.
- On the back of the phone, find the slot at the charging port located at the bottom of the phone.
- Either insert the plastic opening tool or use your fingernail to pull up on the back cover.
- Once the corner is released, slide your finger around the outside until the back cover releases.

Step 2



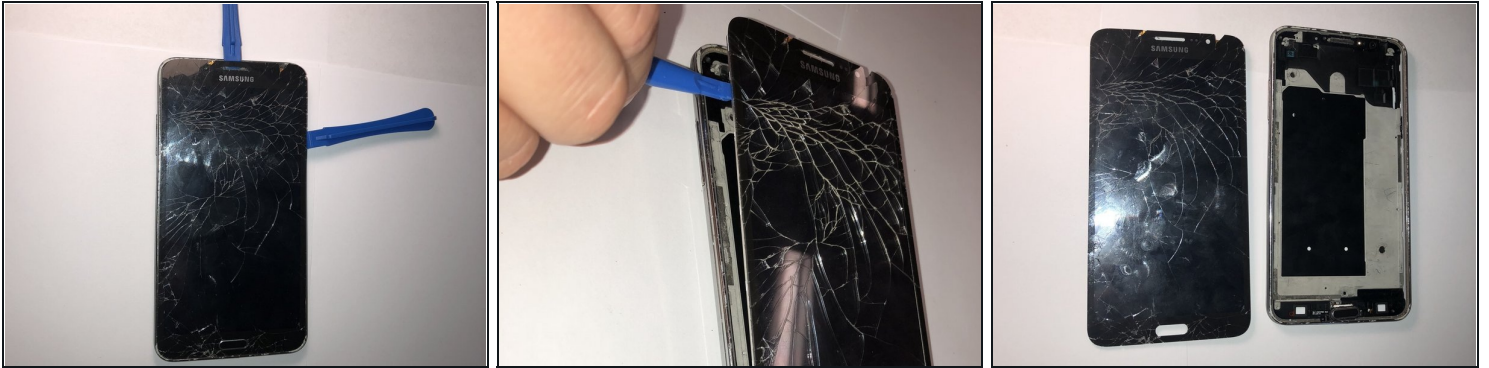
- Locate the battery
- Insert fingernail or plastic opening tool into the slot on the bottom of the battery and gently lift up.
- Remove the battery

Step 3



- Use phillips head PH000 and remove all 13, 1.4 mm visible screws.
- Using the pry tool, carefully pop the Digitizer cover off the device.
- Use the pry tool to disconnect the digitizer

Step 4



- Insert the pry tool along the side of the device, then work your way around the borders of the screen, separating the screen from the rear assembly frame.

⚠ Be careful and do not lift the screen completely off yet, leave the screen at an angle.

- Use the heat gun to heat up the bottom to loosen the adhesive from the menu and back buttons.
- Once heated, gently pull the screen upward.

⚠ Make sure that the buttons are separating from the adhesive.

Step 5



- Flip the screen over.
- Locate the LCD/Digitizer.
- Then disconnect the LCD/Digitizer using [tweezers](#).

To reassemble your device, follow these instructions in reverse order.