



Samsung Galaxy Mega 2 Front Facing Camera Replacement

This guide will show you how to safely change the front facing camera on your device.

Written By: Taylor Powell



INTRODUCTION

This repair guide will demonstrate how to replace the front camera on the Galaxy Mega 2. The repair is somewhat difficult, but it does not take too much time. The screen must be removed in order to replace this part.



TOOLS:

- [Phillips #000 Screwdriver](#) (1)
 - [iFixit Opening Tools](#) (1)
 - [Spudger](#) (1)
-

Step 1 — Front Facing Camera



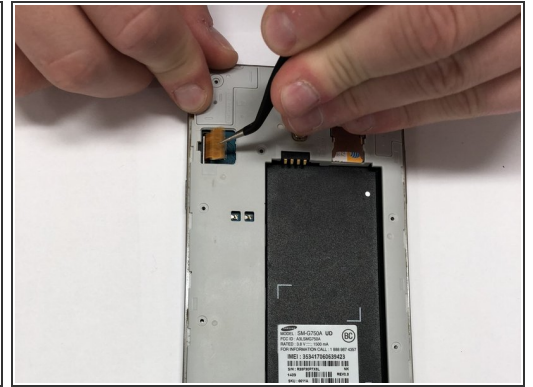
- ❗ Before beginning, make sure phone is turned off.
- On the back of the phone, find the slot at the charging port located at the bottom of the phone.
- Either insert the plastic opening tool or use your fingernail to pull up on the back cover.
- Once the corner is released, slide your finger around the outside until the back cover releases.

Step 2



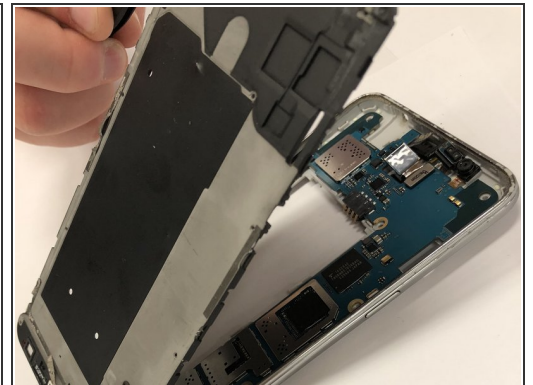
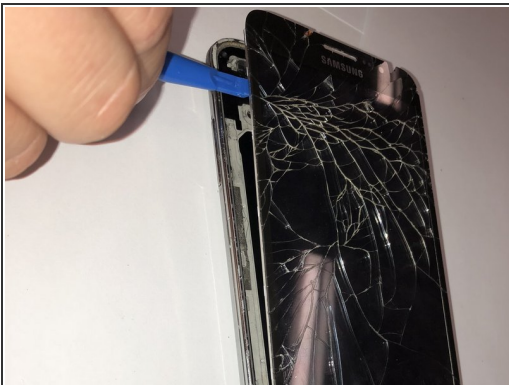
- Locate the battery.
- Use pry tool or fingernail to lift up on the battery.
- Remove the battery.

Step 3



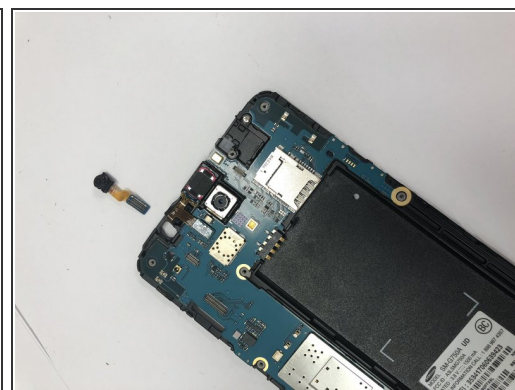
- Use phillips head PH000 and remove all 13, 1.4 mm screws as shown.
- Using the pry tool, carefully pop the Digitizer cover off the device.
- Use tweezers to disconnect the digitizer.

Step 4



- Insert the pry tool along the side of the device, then work your way around the borders of the screen, separating the screen from the rear assembling frame.
- ⓘ Remember once the screen is off, completely remove it from the mid-frame.
- To remove the mid-frame from the motherboard, press down on the top right corner of the frame and the mid-frame should release from the motherboard.
- When it releases use tweezers to pick up on the mid-frame to completely separate it from the motherboard.

Step 5



- Locate the camera in the top left corner.
- Lift the motherboard connector and remove the camera assembly from phone.

To reassemble your device, follow these instructions in reverse order.