



# AXIOO Pico M1110 PJM Hard Drive Replacement

Replace the Hard Drive.

Written By: Cakra Diaz





## TOOLS:

- [Phillips #0 Screwdriver](#) (1)
- [Flathead 3/32" or 2.5 mm Screwdriver](#) (1)
- [Tweezers](#) (1)

## Step 1 — Underside



- Identify the battery locker.
  - Set the righthand locker to unlock.
- Pull the battery while setting the lefthand locker to unlock.

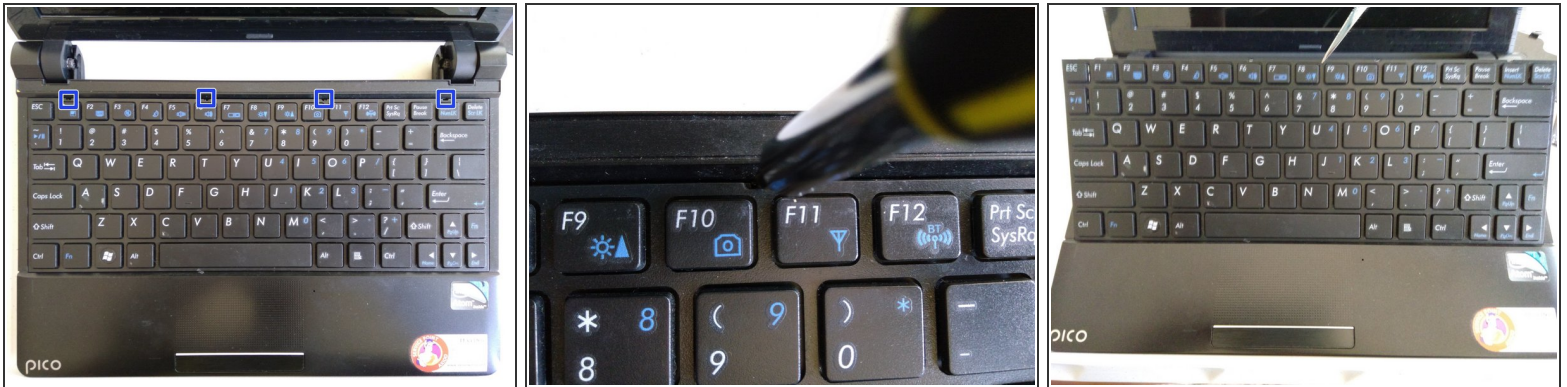
## Step 2



- ★ Remove the battery.

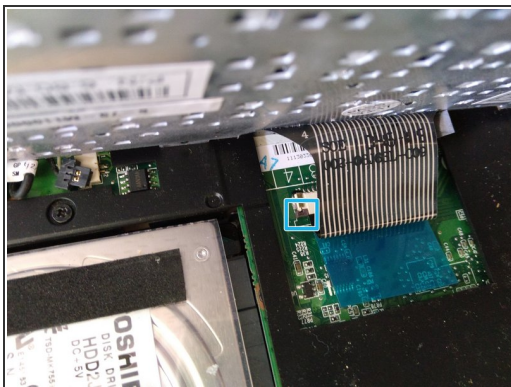


## Step 3 — Keyboard



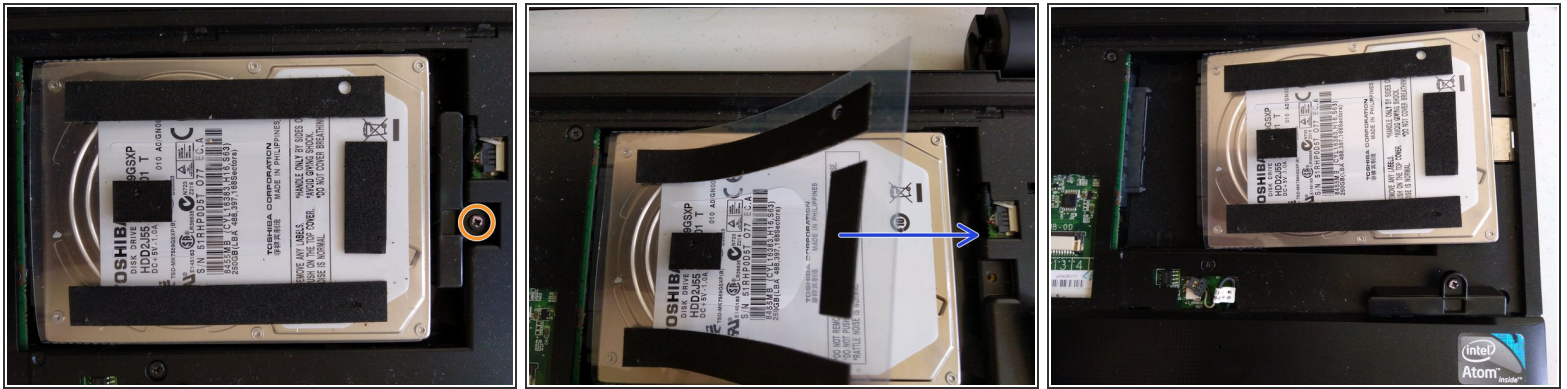
- Identify these:
  - 4 keyboard clipper
- Remove the keyboard clipper by gently twisting them till pops out.
  - ❗ Use a [small flathead screwdriver](#) to twist easier.
- Lift the keyboard up by pivoting on the bottom side.
  - ❗ Don't lift it too high up, because beneath it there's the keyboard ZIF connector still connected; refer to the next step.

## Step 4



- Identify this:
  - The ZIF connector locker
- Gently pull the locker out.
  - ⓘ Use a pair of [tweezers](#) to make it easier to pull it out.
  - ⚠ Don't forget the other side too!
- Remove the ZIF connector.
- ☑ Remove the keyboard.

## Step 5 — Hard Drive



- Remove the following screw:
    - 1 long Philips #0 screw
  - Remove the hard drive holder.
  - Pull the plastic tab away from the socket.
- ✦ Remove the Hard Drive.

To reassemble your device, follow these instructions in reverse order.