



# JBL Charge 2 Plus full disassembly

full disassembly

Written By: Pavel Amelyanenko

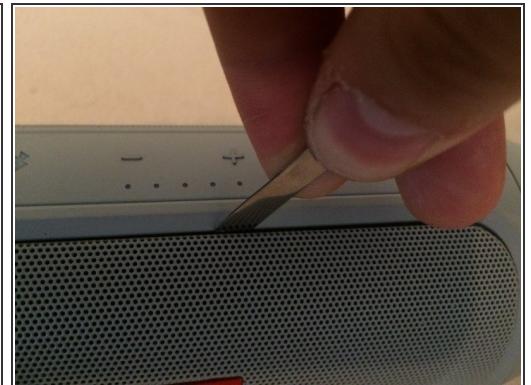
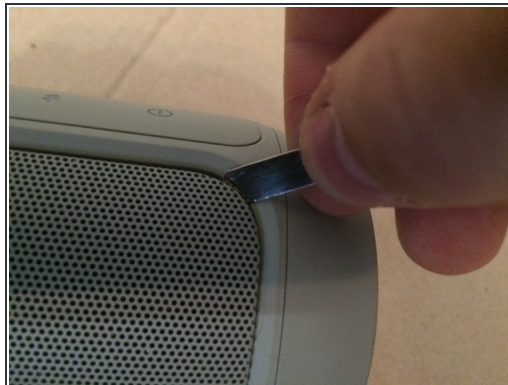
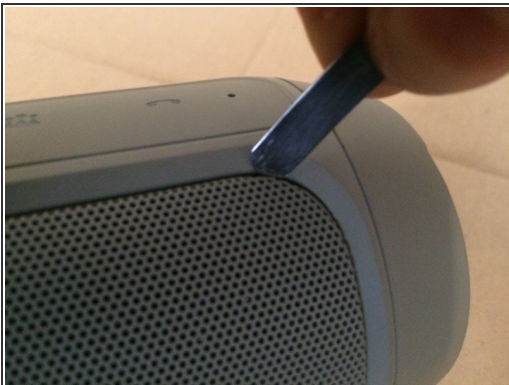


## Step 1 — main board



- Put in the wisdom here.

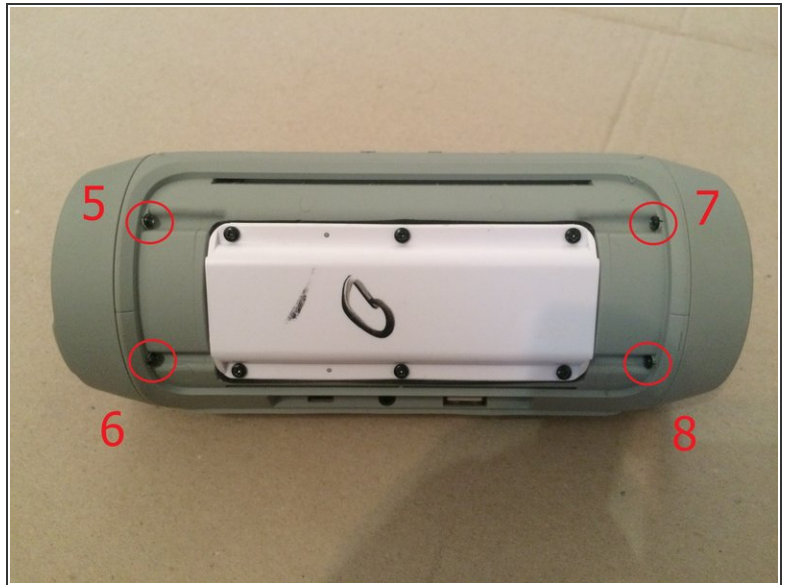
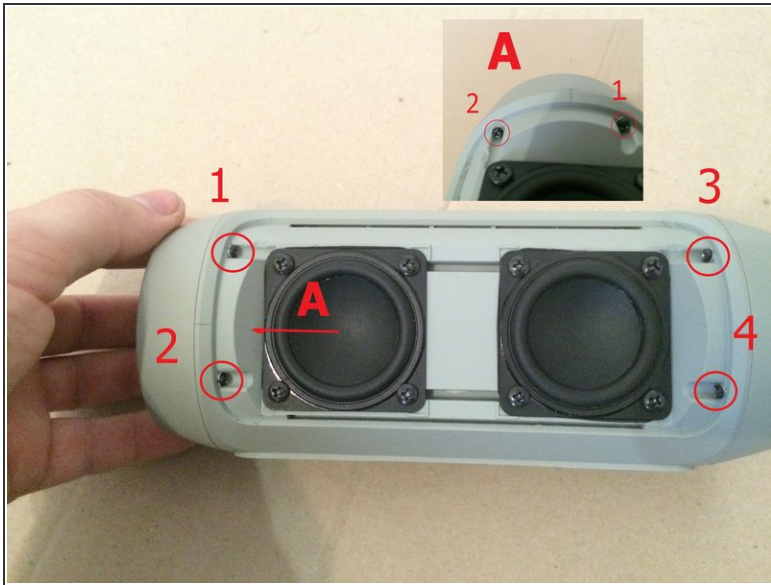
## Step 2



- Put in the wisdom here.



## Step 3



- Put in the wisdom here.

## Step 4



- Put in the wisdom here.

## Step 5



- Put in the wisdom here.

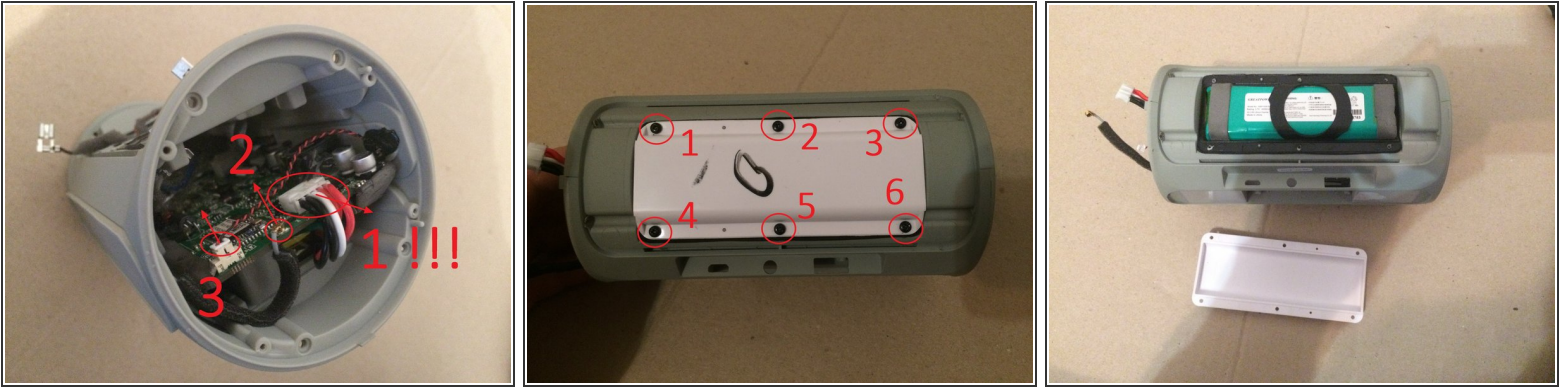
## Step 6



- Put in the wisdom here.

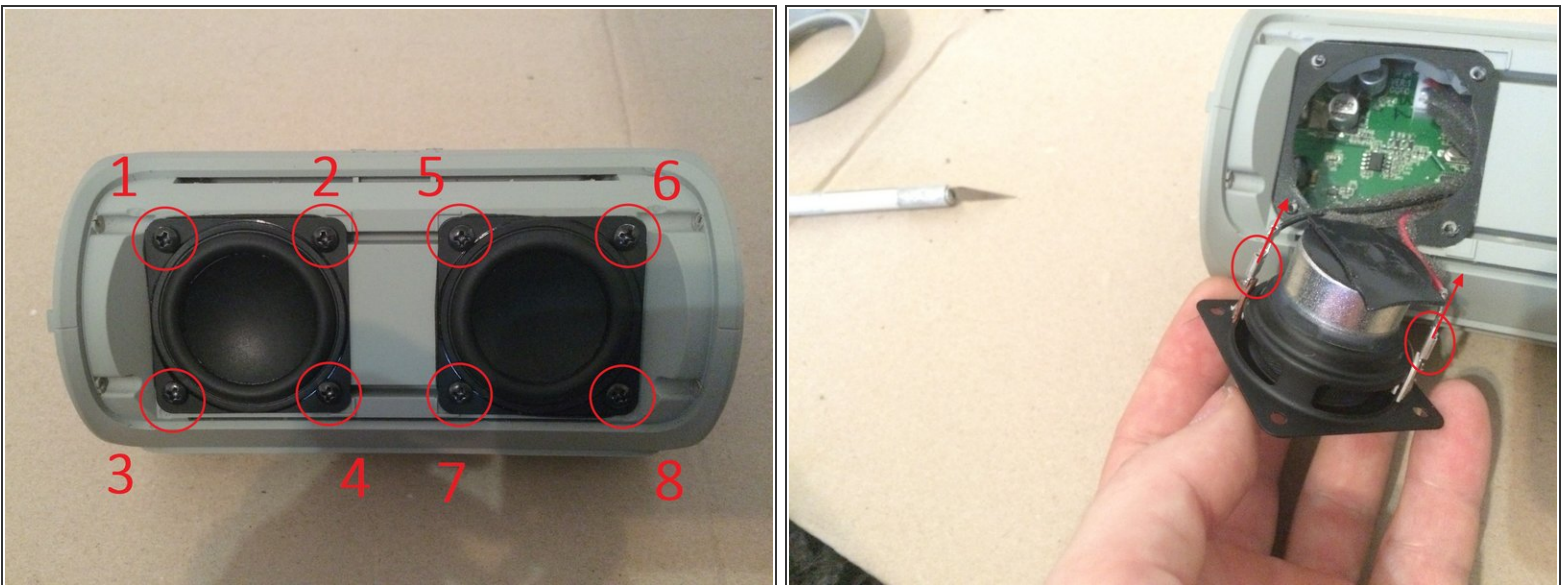


## Step 7



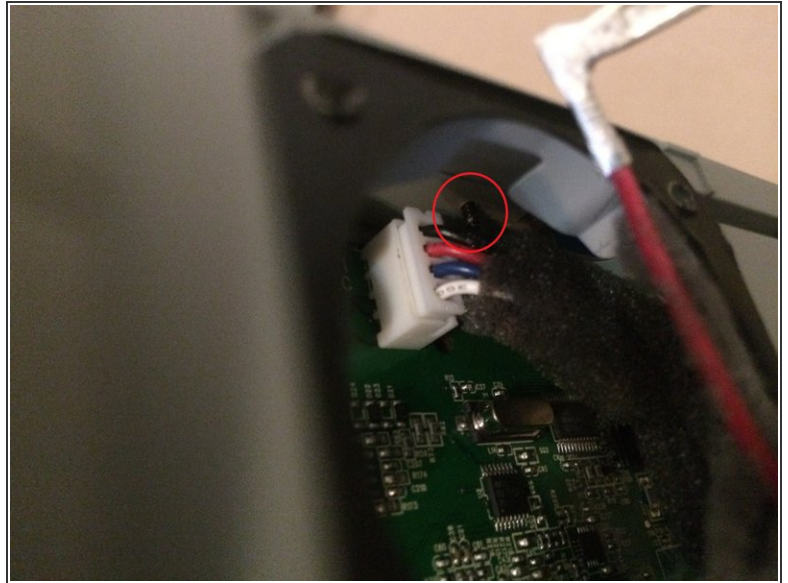
- Put in the wisdom here.

## Step 8



- Put in the wisdom here.

## Step 9



- Put in the wisdom here.

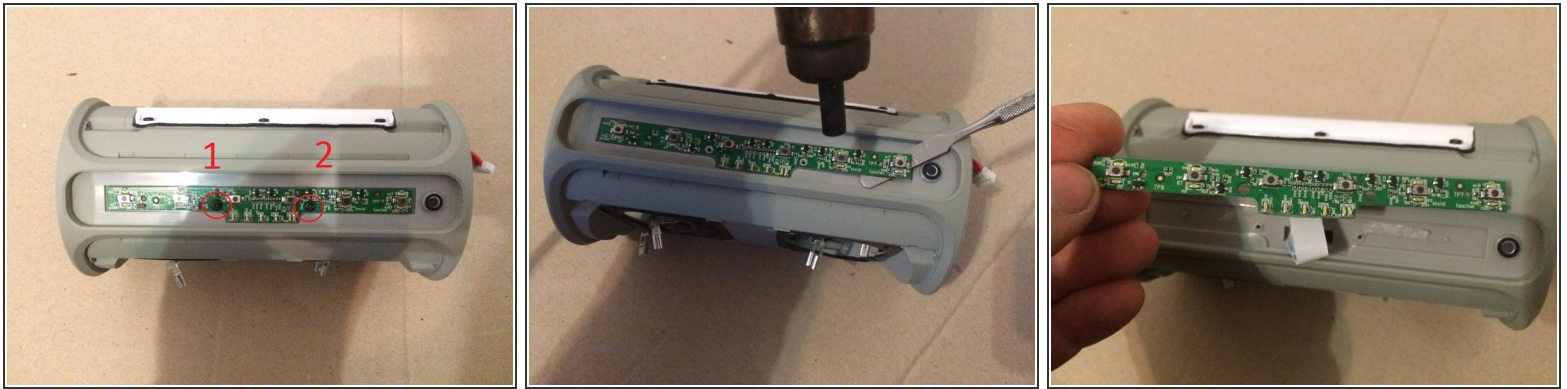
## Step 10



- Put in the wisdom here.

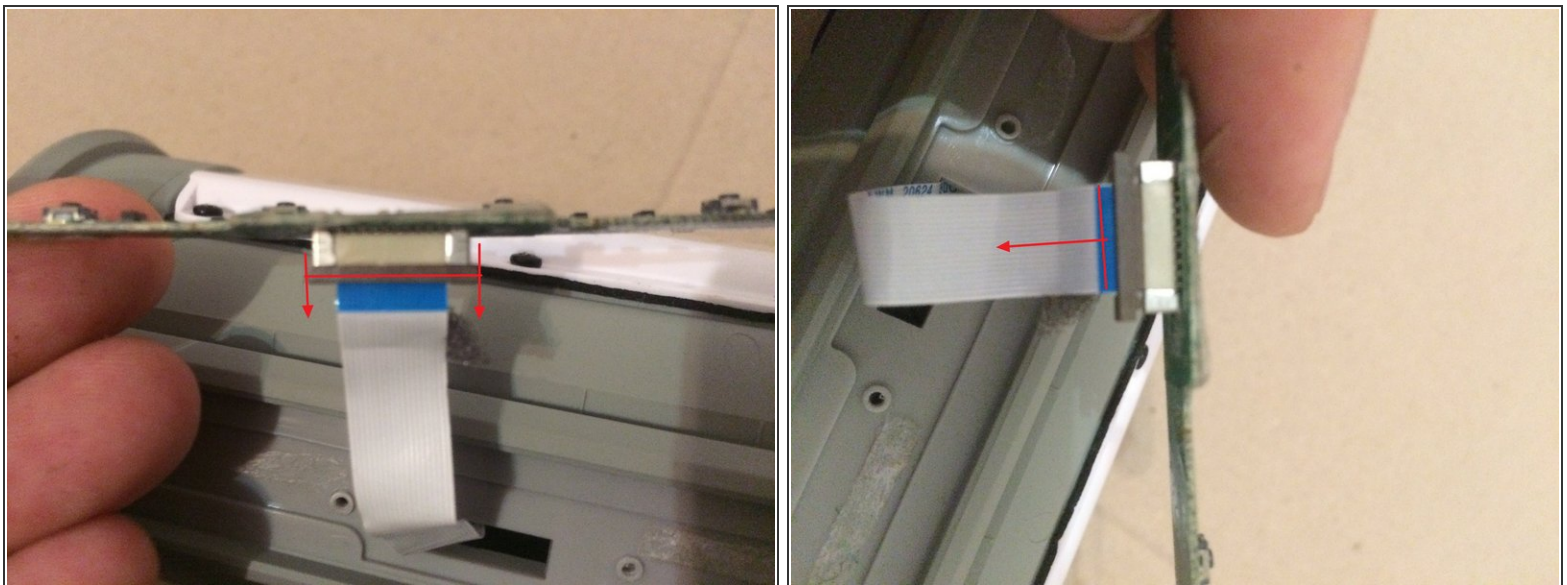


## Step 11



- Put in the wisdom here.

## Step 12



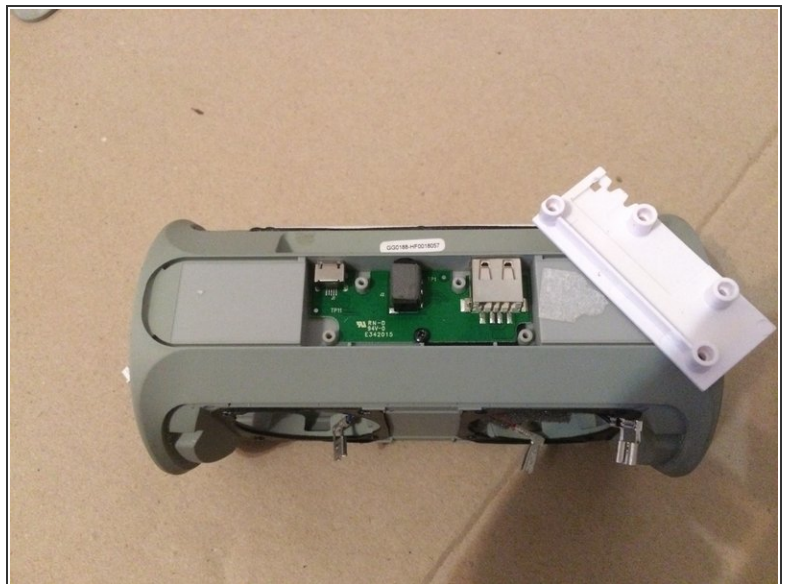
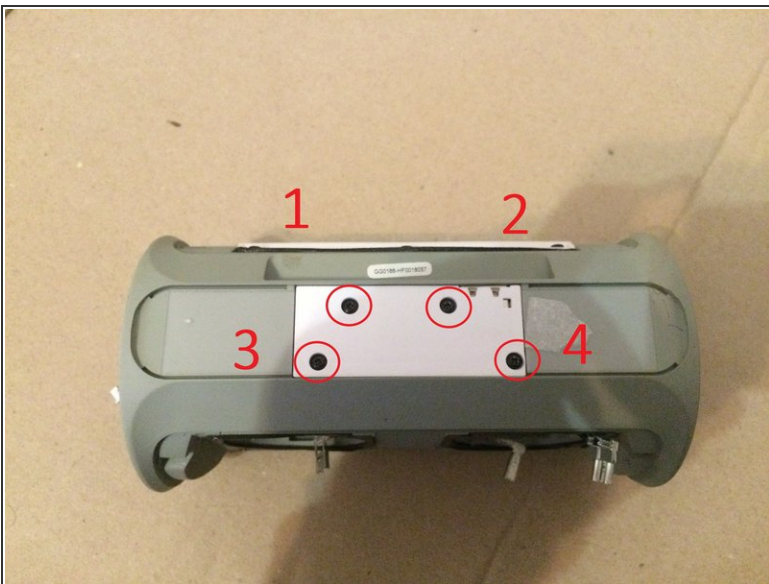
- Put in the wisdom here.

## Step 13



- Put in the wisdom here.

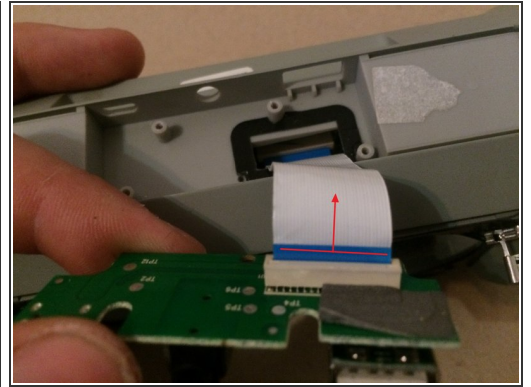
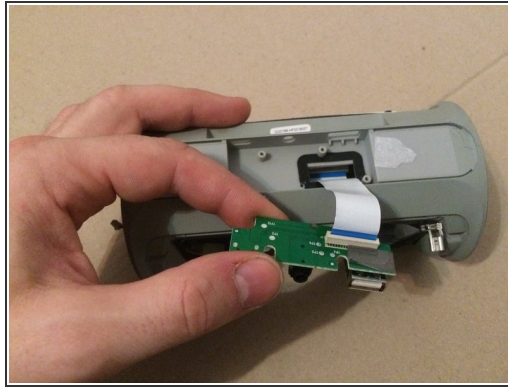
## Step 14



- Put in the wisdom here.

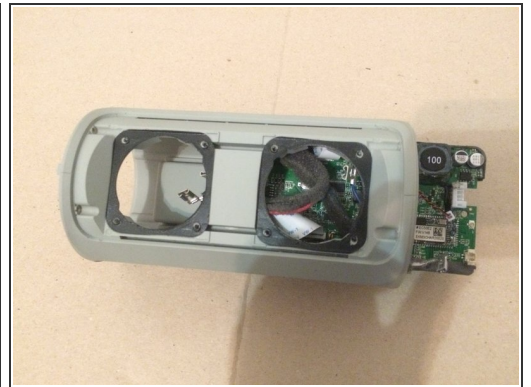
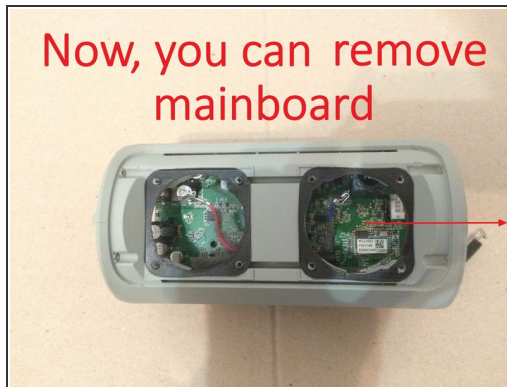
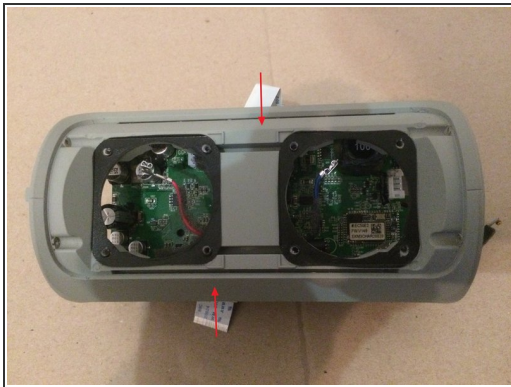


## Step 15



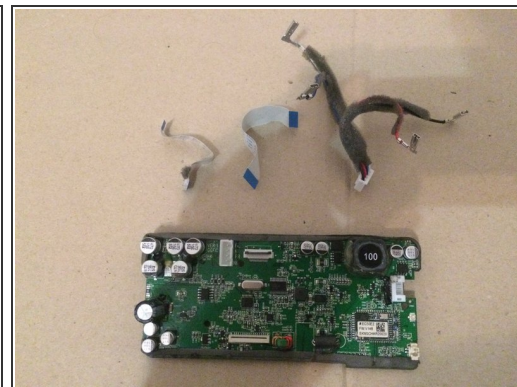
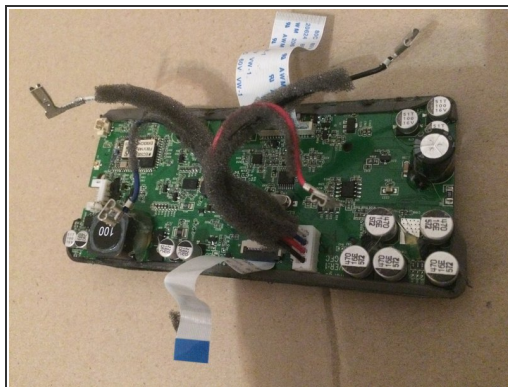
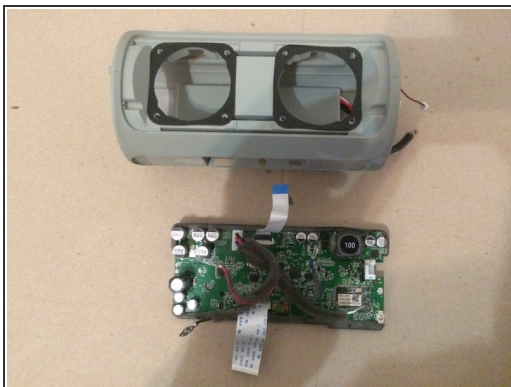
- Put in the wisdom here.

## Step 16



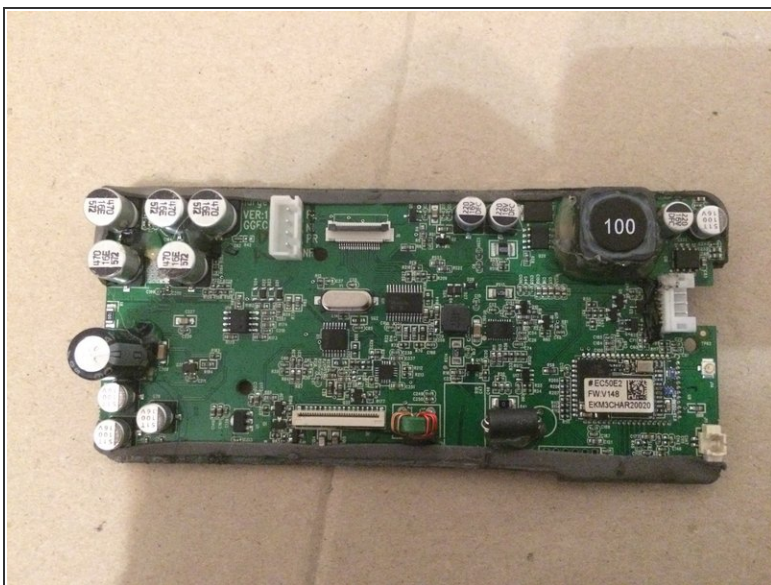
- Put in the wisdom here.

## Step 17



- Put in the wisdom here.

## Step 18



- Put in the wisdom here.

To reassemble the device, follow these instructions in reverse order.