



# AXIOO Pico M1110 PJM LAN Card Replacement

Replace the LAN Card.

Written By: Cakra Diaz



---

## INTRODUCTION

Replace the LAN Card.

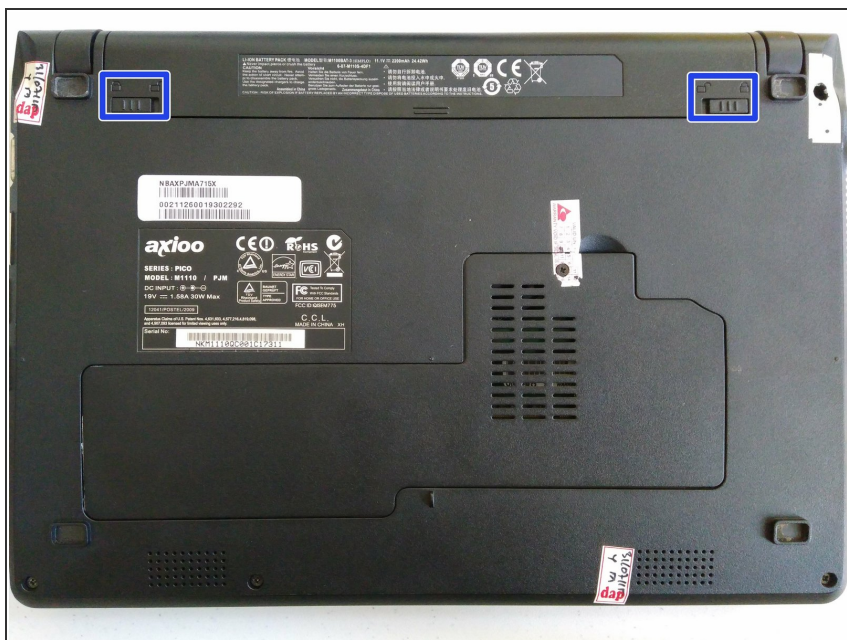


### TOOLS:

- [Phillips #0 Screwdriver](#) (1)
-



## Step 1 — Underside



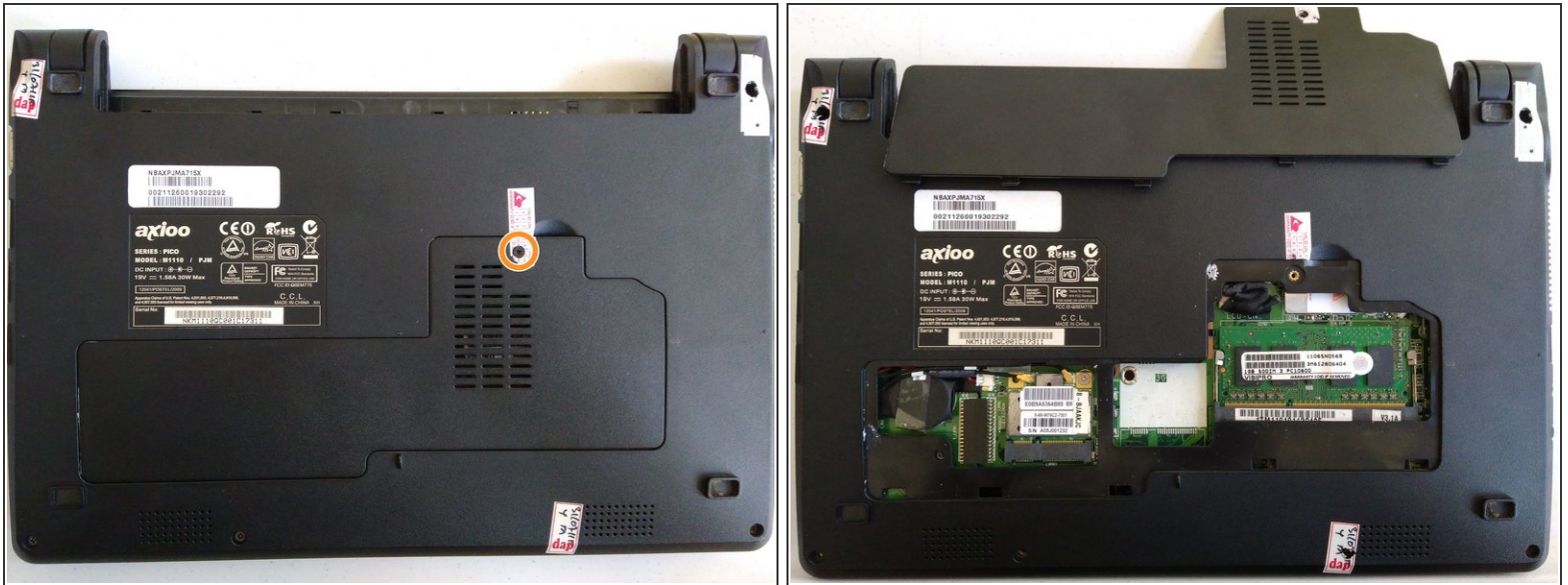
- Identify the battery locker.
- Set the righthand locker to unlock.
- Pull the battery while setting the lefthand locker to unlock.

## Step 2



- ★ Remove the battery.

## Step 3 — Compartment



- Remove the following screw:
  - 1 long Philips #0 screw
- Remove the cover.

## Step 4



- Remove the coaxial connectors by prying the connectors straight up from the board.
- Remove the following screw:
  - 1 short Philips #0 screw
- ☑ Remove the LAN Card.

To reassemble your device, follow these instructions in reverse order.