



# A-Solar PowerBank AL-200 Teardown

The PowerBank AL-200 is a mobile usb port to charge your phone when you're not at home. But what is inside it? Lets find out!

Written By: storm



---

## INTRODUCTION

The PowerBank AL-200 is a mobile usb port to charge your phone when you're not at home. But what is inside it? Let's find out!



### TOOLS:

- [Phillips #00 Screwdriver](#) (1)
-

## Step 1 — A-Solar PowerBank AL-200 Teardown



- There are three blue LEDs to show you the power in the battery.
- There is also a handy LED to see what you are doing in the dark.

## Step 2



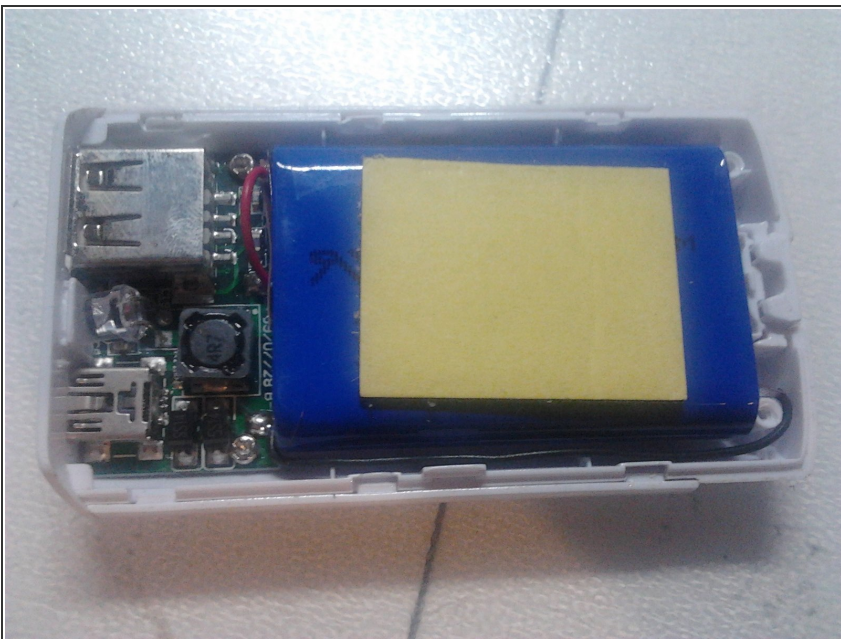
- The bottom of the device.
- It's time for some prying. Take out the rubber plugs at the bottom of the device.
- Remove the screws which are underneath the plugs.

### Step 3



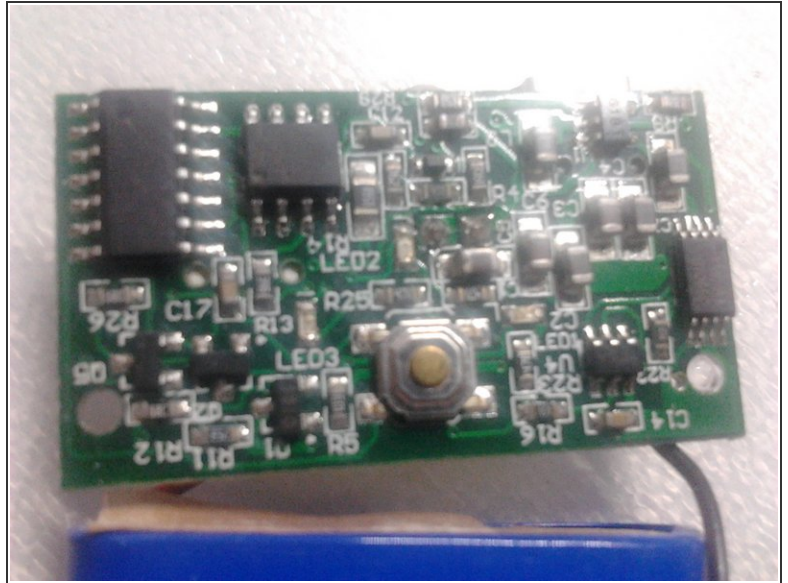
- use a flathead screwdriver or a spudger to pry open the device.
- Don't pry at the front of the device - there are a few hooks and you do not want to break them.

### Step 4



- A first glance at the inside: a big battery and the logic board.
- There is a 1800 mAh battery in it.
- There are two screws in the logic board, the battery is glued to the casing.

## Step 5



- The other side of the electronics.
- And the logic board.

## Step 6



- And there it is: the A-Solar PowerBank AL-200 torn down.
- It was easy to do.

To reassemble your device, follow these instructions in reverse order.