



Rockwell Automation PowerFlex 755 Disassembly

Disassembling a 1HP Rockwell Automation PowerFlex 755 VFD.

Written By: Alex Nolan



INTRODUCTION

This guide outlines how to disassemble a Rockwell Automation PowerFlex 755 1HP VFD using the tools listed below. No other special tools or knowledge are necessary.

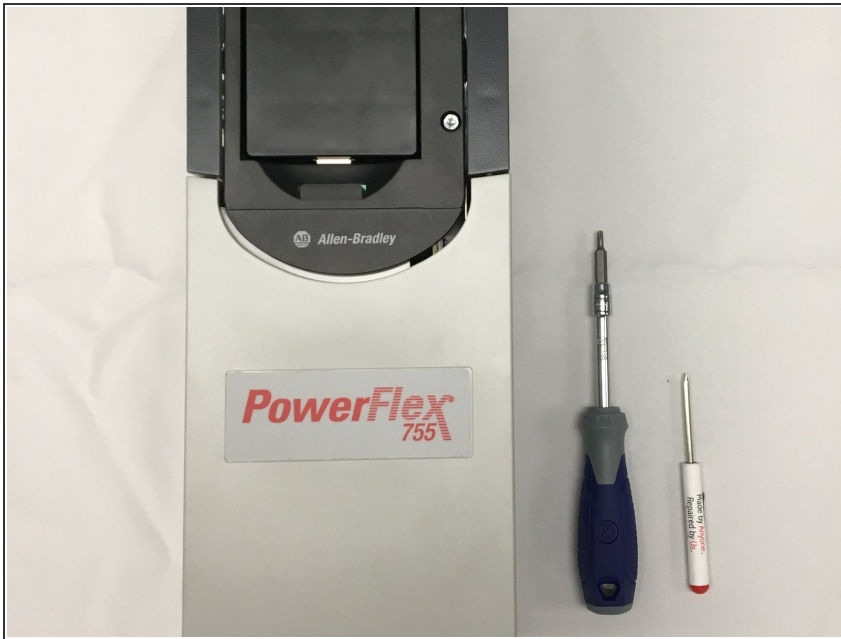
Following the guide in reverse will show you how to re-assemble the drive.



TOOLS:

- [Flathead 3/32" or 2.5 mm Screwdriver](#) (1)
 - [T15 Torx Screwdriver](#) (1)
-

Step 1 — Read Before Starting!



⚠ WARNING: Do not work on any VFD or electronic device without first disconnecting it from power! Use a multimeter if you are not sure!

Step 2 — Removing the Keypad



- The PF755 will either have a cover plate, as shown in this guide, or a keypad. To remove these, press on

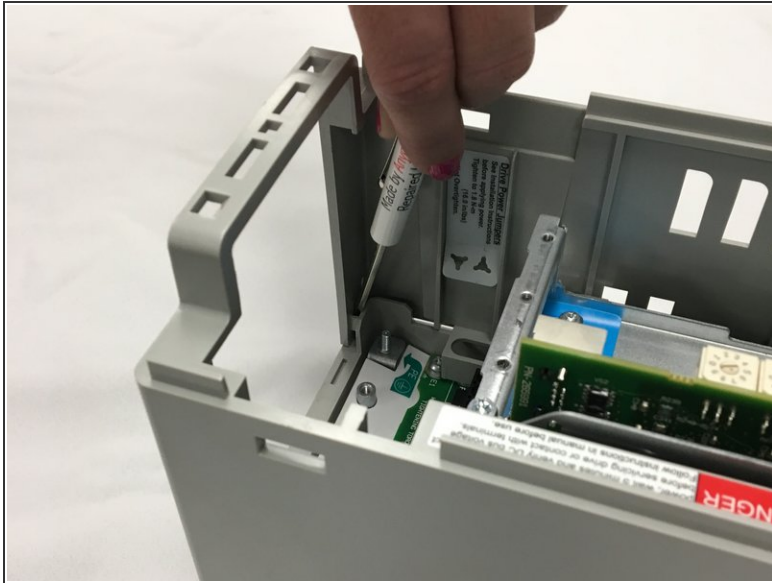
the tab at the top of the drive, and then push the plate or keypad straight up.

Step 3 — Removing the Lower Cover



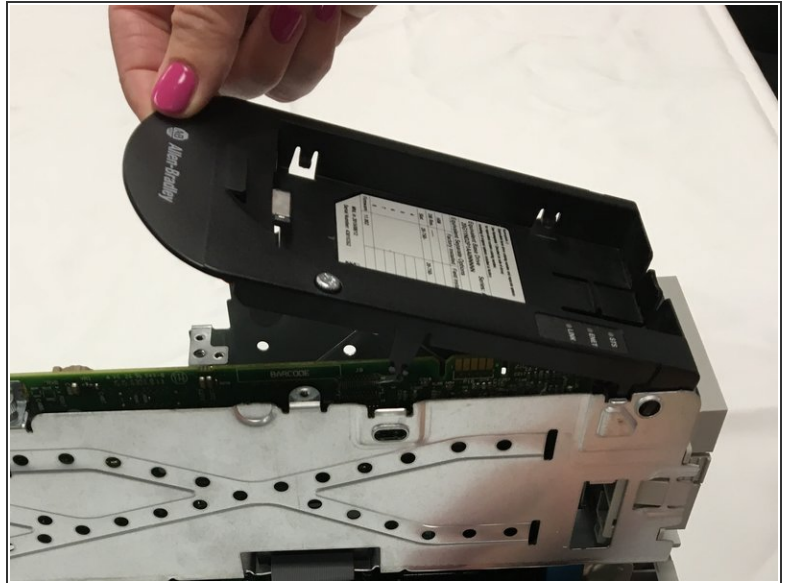
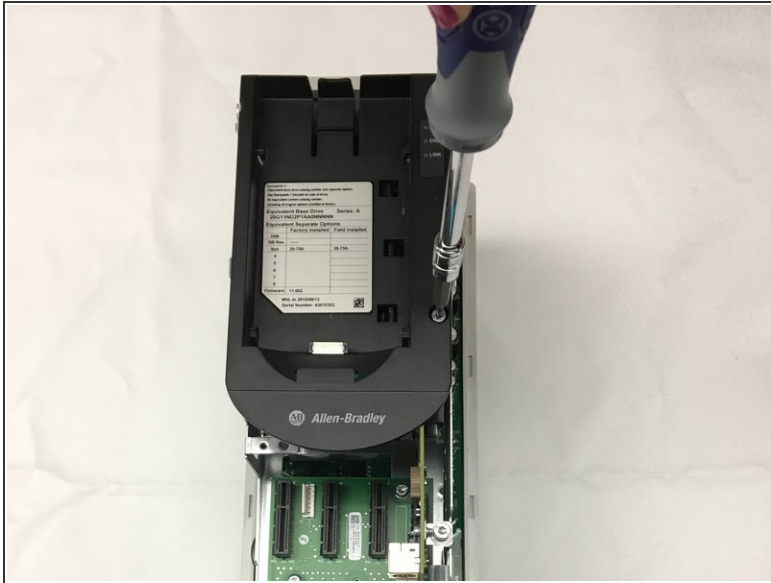
- The lower cover is removed by pinching the tabs found on each side, and then pulling up and out as shown.

Step 4 — Removing the Outer Casing



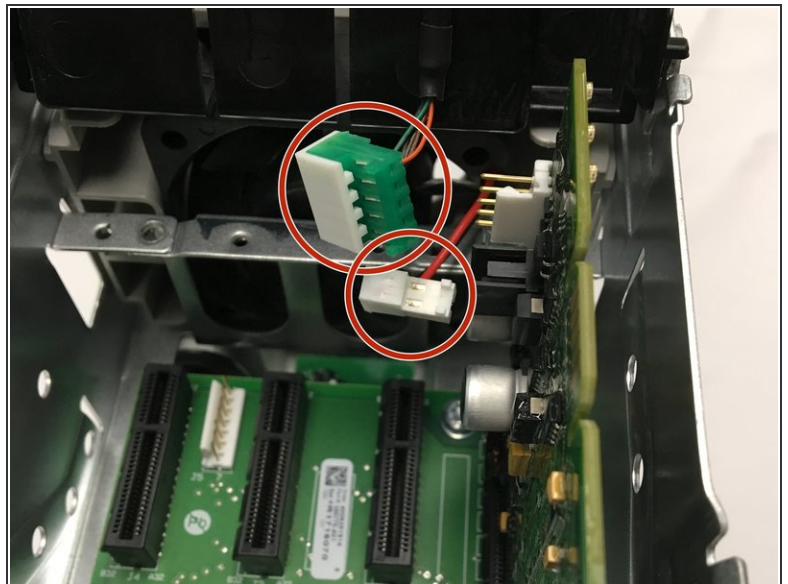
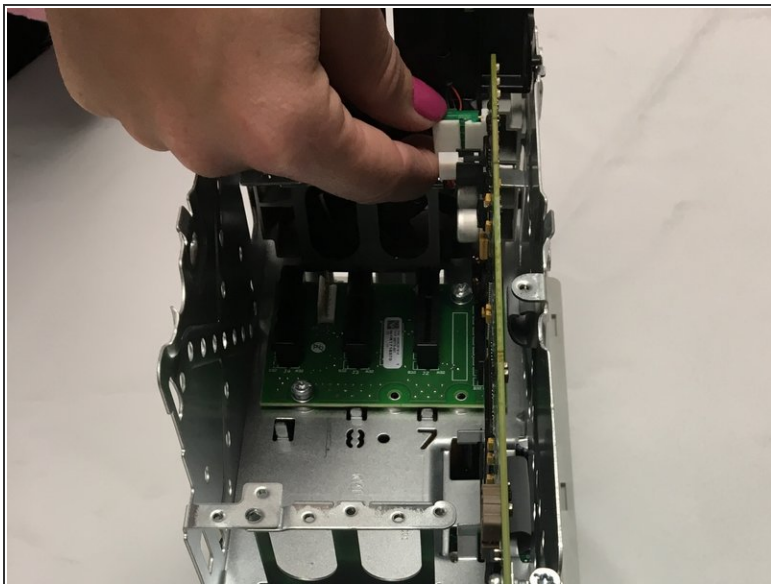
- To remove the outer casing, first use a small flathead screwdriver to pry the two tabs found at the bottom of the drive. These fit on very tightly. Be patient and apply strong, constant pressure to ensure that you do not snap the plastic.
- Lift the casing at an angle to remove it, as shown in Image 2.

Step 5 — Opening the Keypad Panel



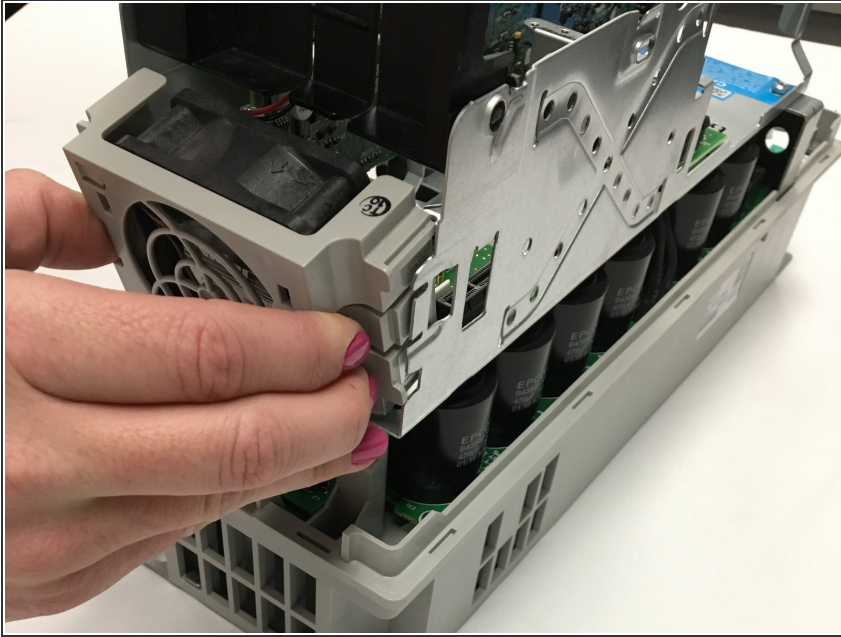
- Open the Keypad panel to gain access to the components underneath by loosening the screw on the front right of the panel. Note that the screw will not come all the way out.
- Lift the panel from the bottom edge, as shown in Image 2.

Step 6 — Removing the Keypad and Fan Cables



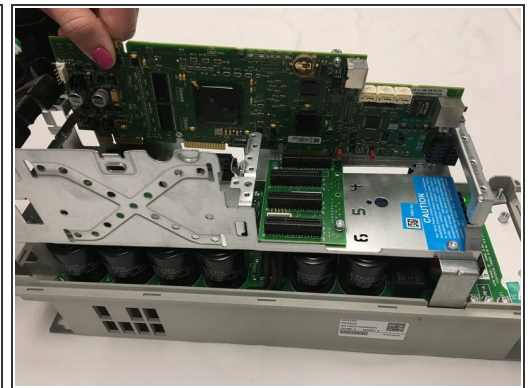
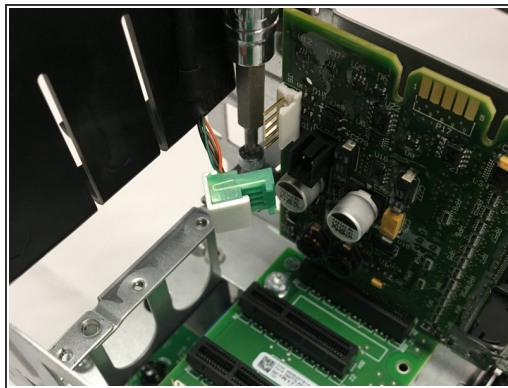
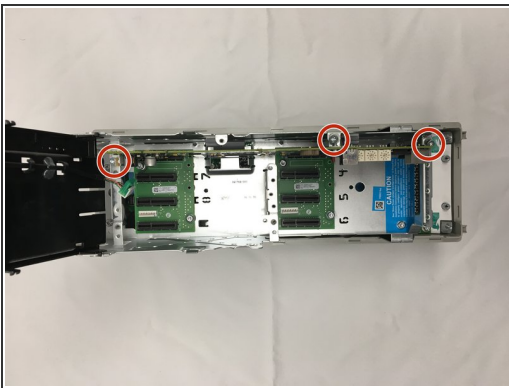
- Remove the two connectors located at the top of the drive near the Keypad Panel by pulling them with two fingers. Be sure to pull on the plastic connectors and not on the wires.

Step 7 — Removing the Upper Fan



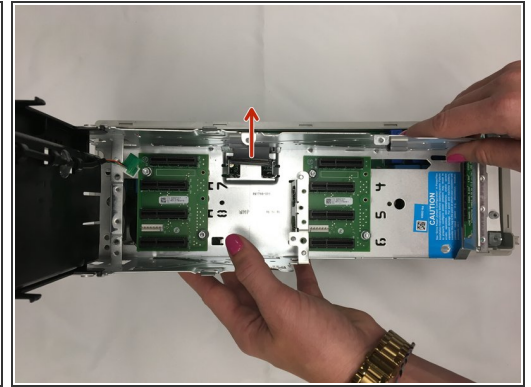
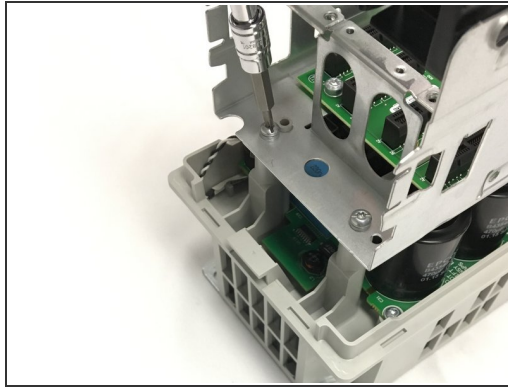
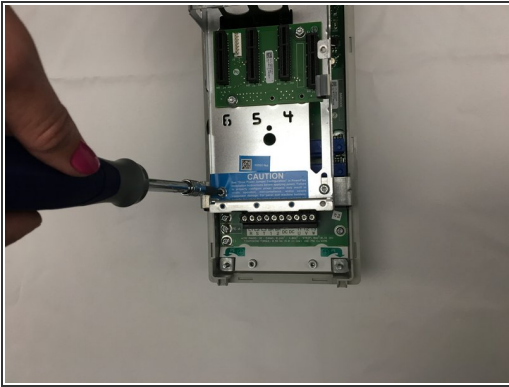
- Remove the upper fan by pinching the tabs found on each side and pulling.

Step 8 — Removing the Main Control Board



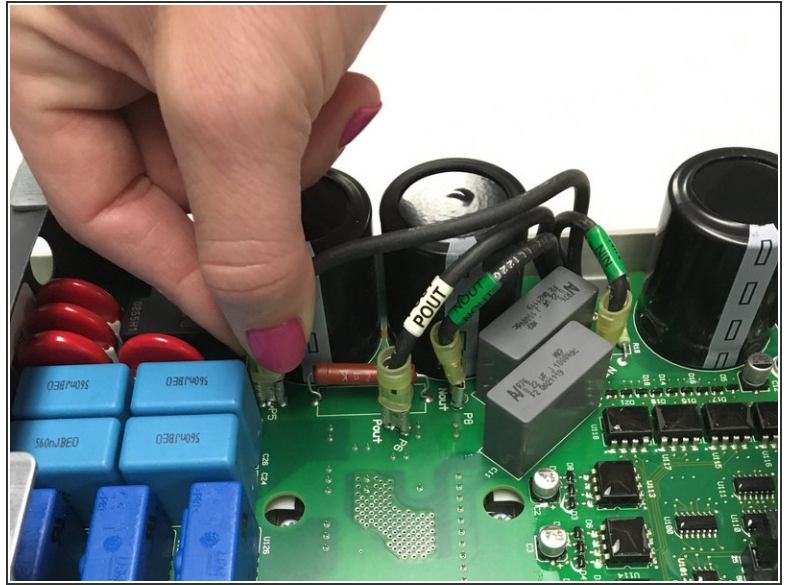
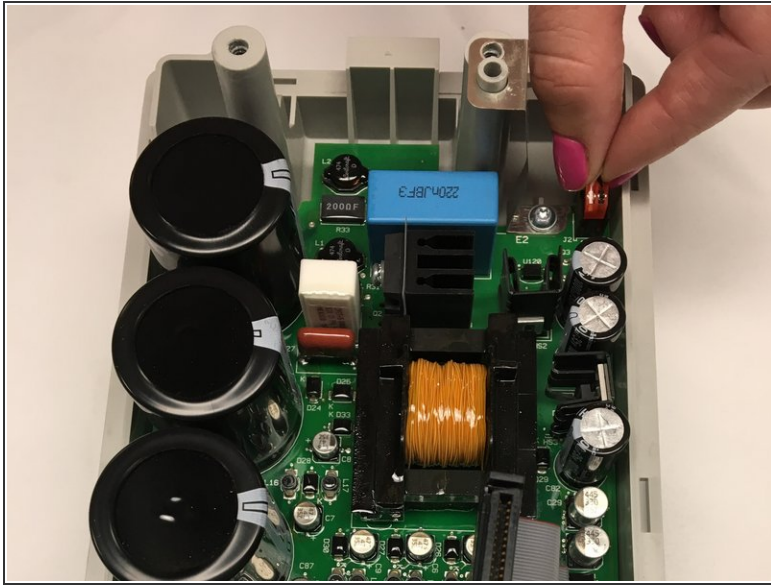
- Remove the main control board by loosening the three screws shown. Note that these screws stay attached to the board.
- Lift the card out at an angle as shown, lifting from the top of the card.

Step 9 — Removing the Main Interface Board



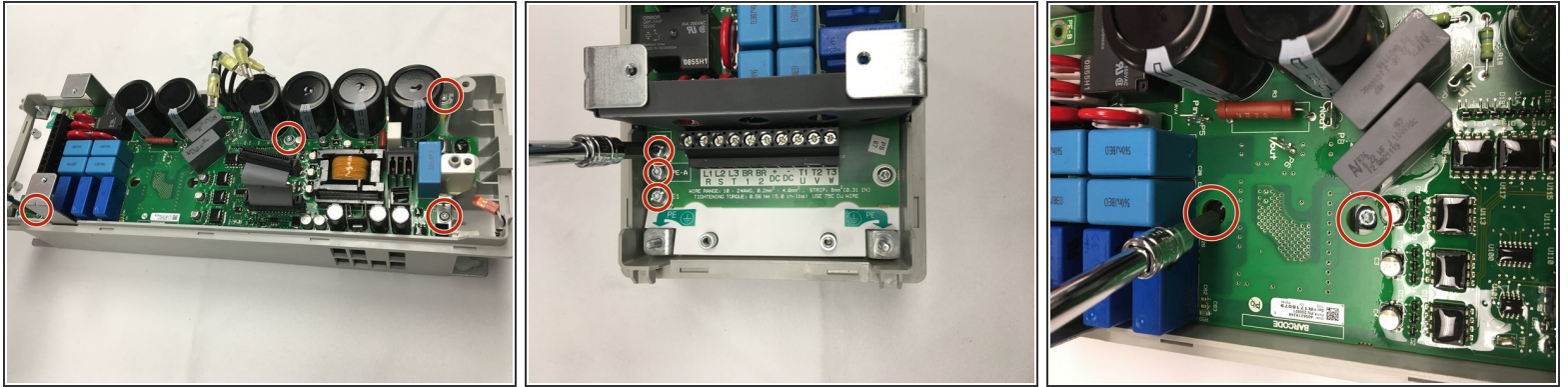
- Remove the main interface board by removing the two screws found near the bottom of the drive. Place them in a safe place.
- Remove the two screws found at the top of the drive. Place them with the other two screws.
- Slide the ribbon cable connector out as shown, and lift the board straight up from the drive.

Step 10 — Unplugging from the Power Interface Board



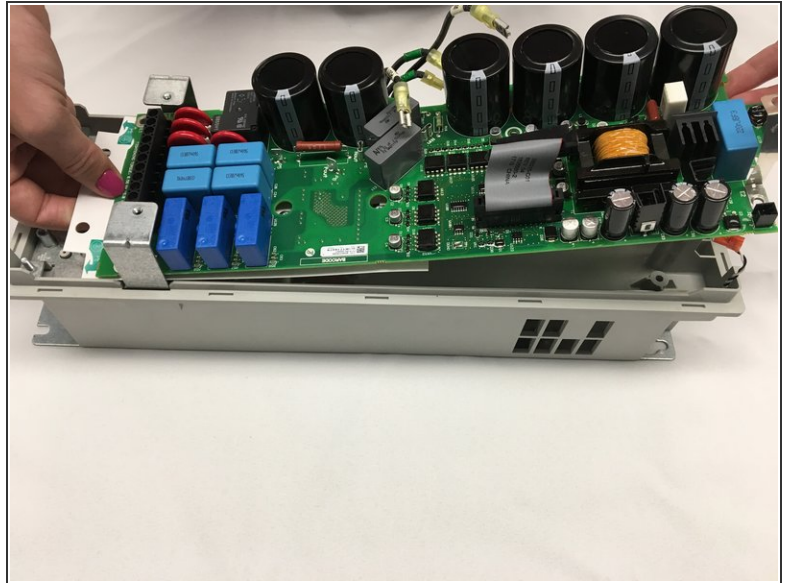
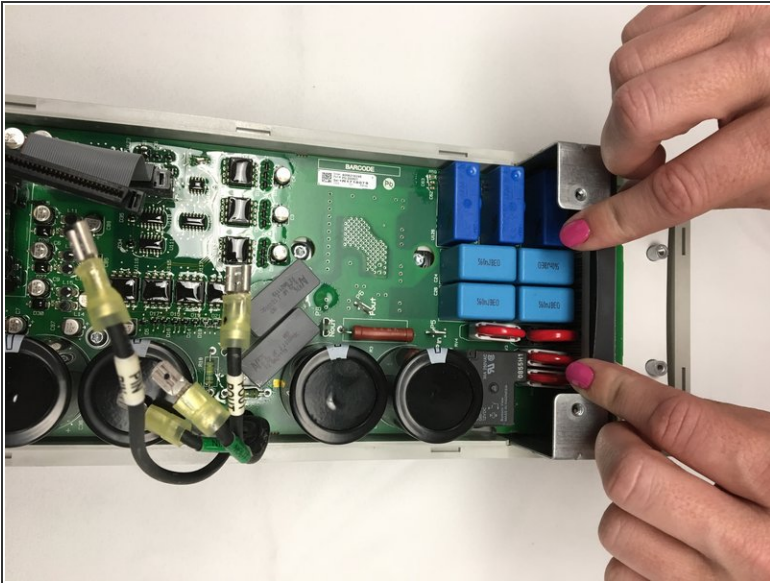
- Remove the lower fan connector found at the top of the drive by pulling with two fingers. Be sure to pull on the plastic connector and not on the wires.
- Remove the four labeled power cables by gripping the plastic on the connectors and pulling. These may be tight. Be patient and apply strong, constant force to remove the connectors. Again, be sure to pull on the connectors and not on the wires.

Step 11 — Disconnecting the Power Interface Board



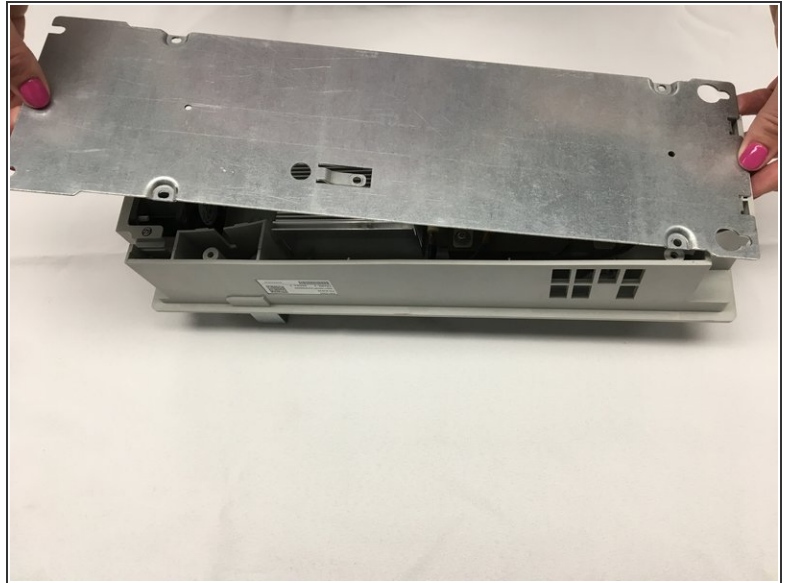
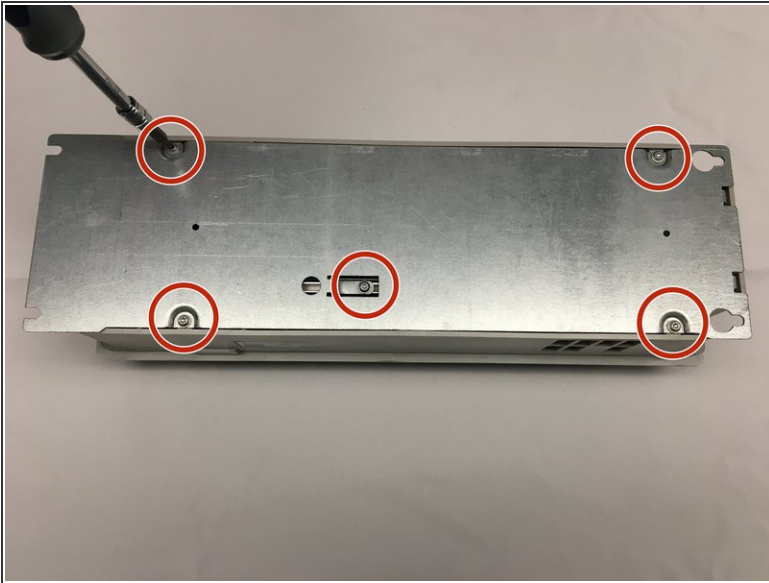
- Disconnect the power interface board from the lower chassis by removing the four screws on the board as shown. Set these screws aside in a safe place.
- Remove the three screws shown and place them with the other screws. Be sure not to lose the washers on them.
- Loosen the two screws found in the holes in the board. These screws only need to be loosened, but be sure not to lose them in the following steps.

Step 12 — Removing the Power Interface Board



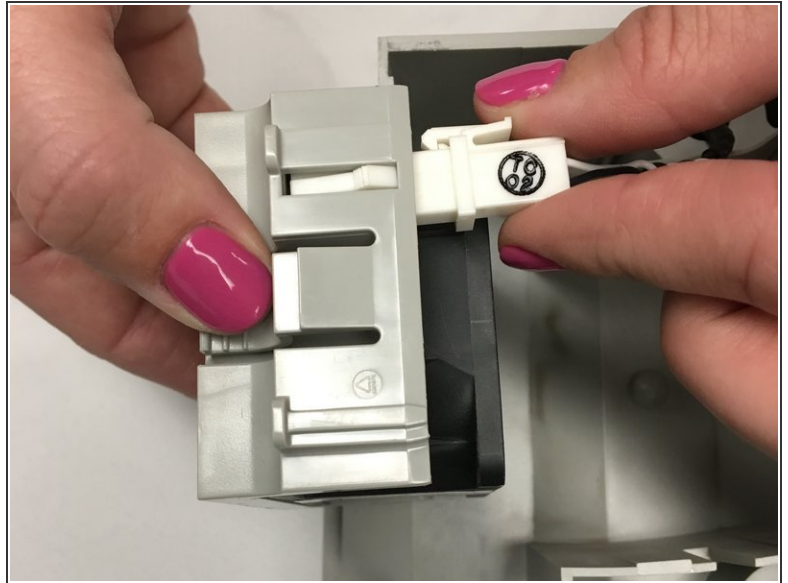
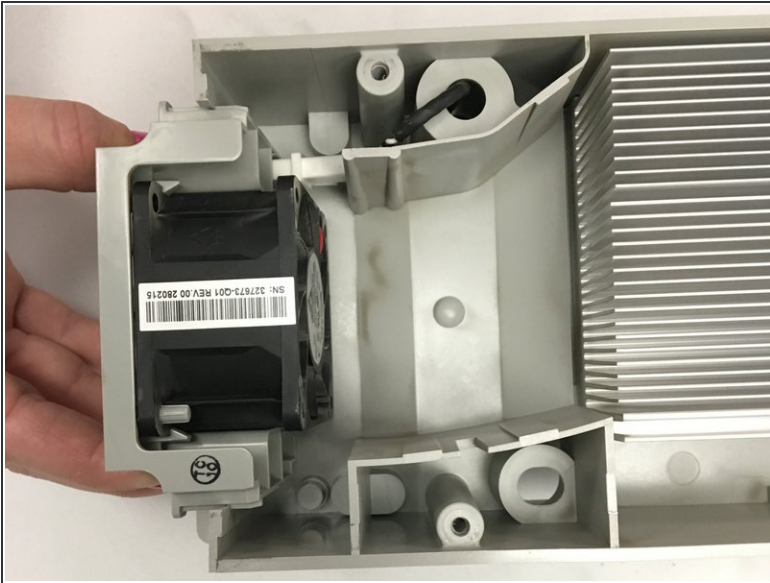
- Remove the power interface board from the lower chassis by first pulling out the plastic insulator found at the bottom of the drive.
- Lift the board from the top of the drive and slide it out at an angle as shown. You may need to use the small flathead screwdriver to lift the insulating paper at the bottom of the drive off of the pegs.

Step 13 — Removing the Back Panel



- Remove the five screws holding the back panel to the lower chassis. Set these aside in a safe place.
- Lift the plate from the bottom of the drive and slide it off at an angle as shown.

Step 14 — Removing the Back Fan



- Remove the back fan by pinching the tab on both sides and pulling.
- Disconnect the fan by pinching the latch on the connector and pulling straight out. Be sure to pull on the plastic connector, and not on the wire.
- The PowerFlex 755 variable frequency drive is now fully disassembled.

To reassemble your device, follow these instructions in reverse order.