



# Nostalgia GCM200 Disassembly

This a guide to use for other pages to add as prerequisite steps before any parts replacement.

Written By: Praful Busa



---

## INTRODUCTION

This is a disassembly guide page that shows you how to open the device. It is an important part of any replacement process that we do here because once you have device open, you can replace any parts (Power Cable, Power Button, Heating Coil, Bowl).



### TOOLS:

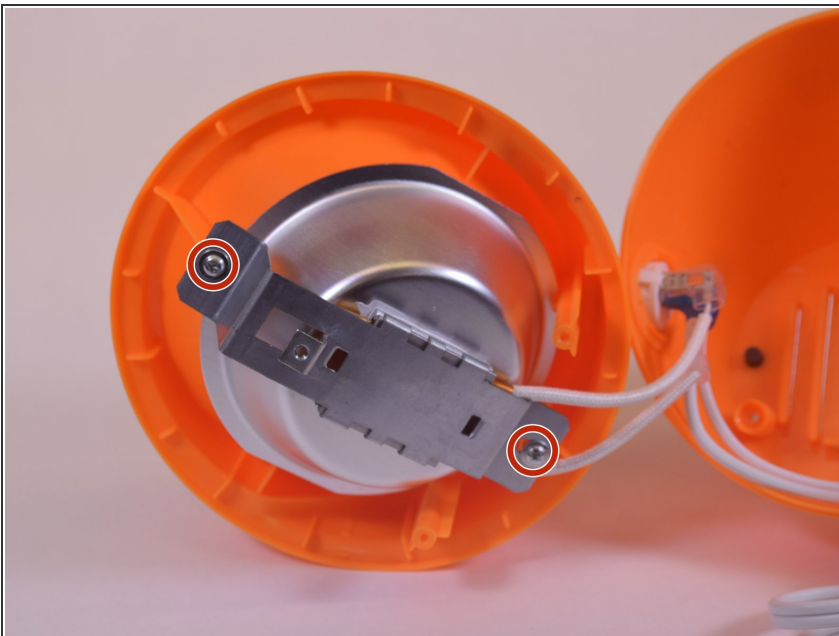
- [64 Bit Driver Kit](#) (1)
-

## Step 1 — Nostalgia GCM200 Disassembly



- Remove the two 1.3 mm Phillips #2 screws.
- Remove the S6 spanner screw.
- ☑ Carefully place these three screws somewhere safe to use later in reassembly.

## Step 2



- Split the device in half to expose the internal parts of the device.
- Again, there are two more Phillips screws to remove.

## Step 3



- Remove the two screws from both sides of the heating coil.

To reassemble your device, follow these instructions in reverse order.