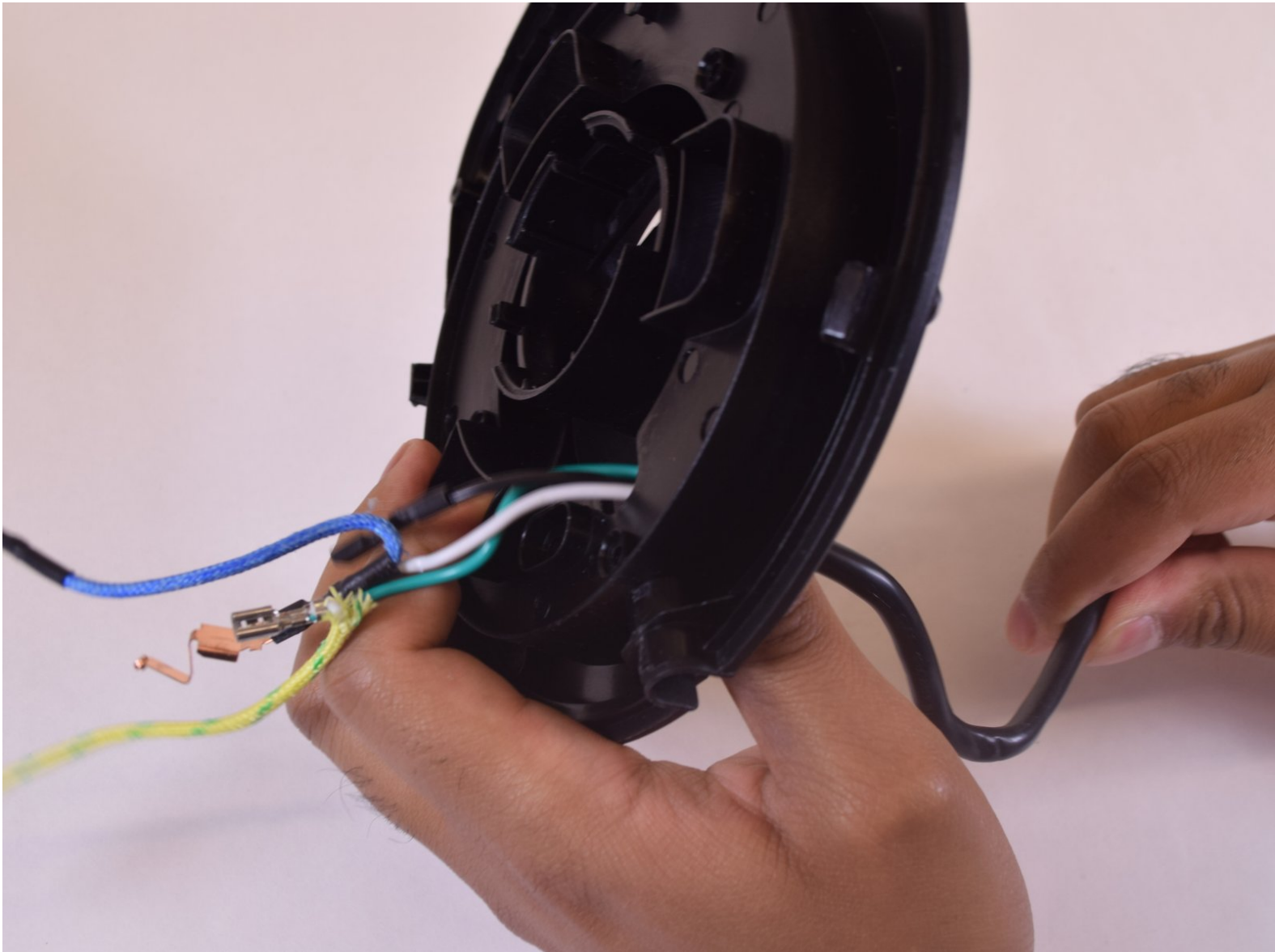




# Caribou Coffee CC-EKV8SS7 Power Cord Replacement

This guide removes and replaces the power cord entirely.

Written By: Risa Hess



# INTRODUCTION

This guide removes and replaces the power cord entirely.

This is intended for cord replacement when the break is within the base. Power cords broken outside of the base, nearer the plug, use troubleshooting guide.




## TOOLS:

- [iFixit Opening Tools](#) (1)
  - [Metal Spudger](#) (1)
  - [Tri-point Y0 Screwdriver](#) (1)
-

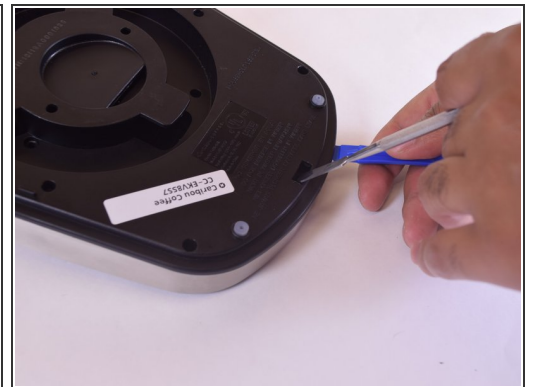
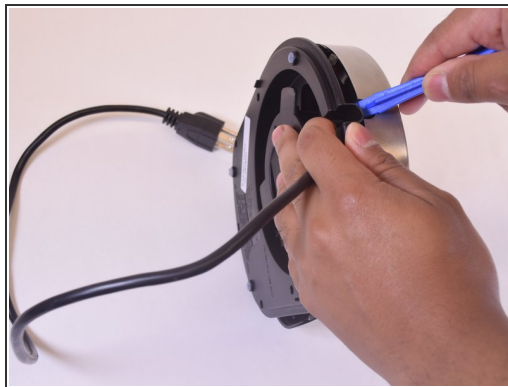
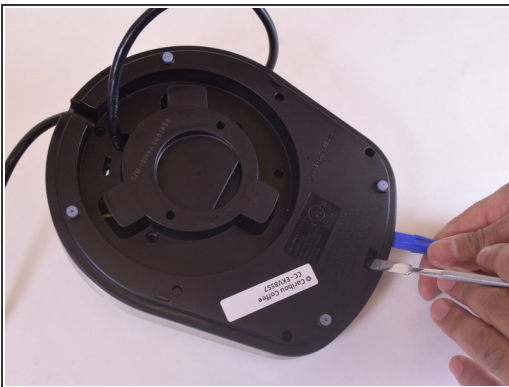
## Step 1 — Caribou Coffee CC-EKV8SS7 Base Disassembly



 Unplug the unit before disassembling to avoid electrocution.

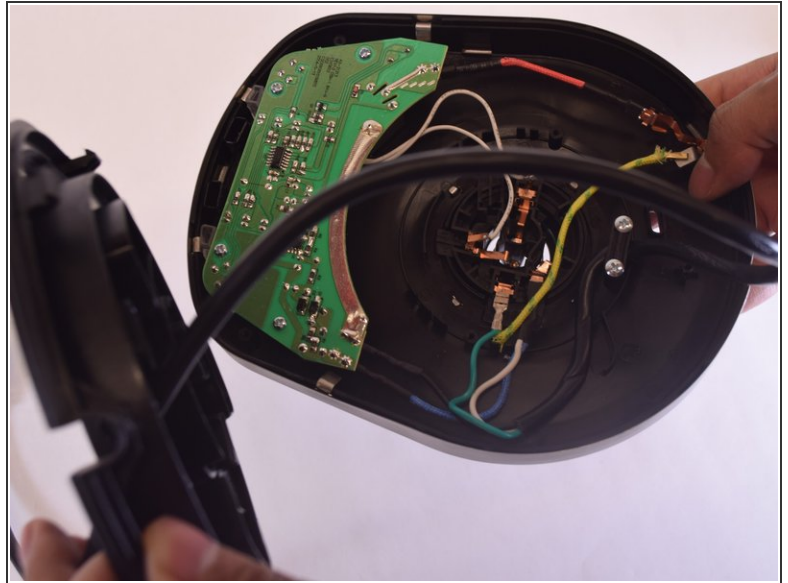
- Remove the five (10mm) Y screws from the bottom of the base. Three are in a triangle around the center and two are on the corners of the flat edge.

## Step 2



- Now you will need to 'unlock' the top and bottom of the base from each other. On the flat edge, there is a rectangle inset with one side cut out. Insert a metal spudger about 1/2" in to the opening to toggle open an interior tab.
- With the metal tool still inserted, use an opening tool between the black and silver sides to pry the base open.

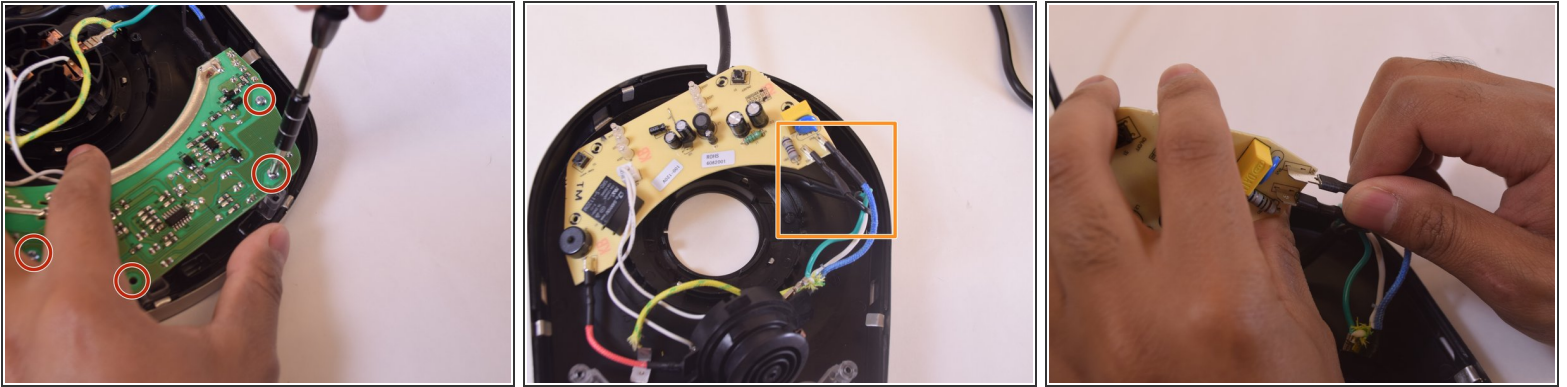
## Step 3




- Once you have the halves opened at least 1/4", remove the metal key and rotate the base a quarter turn in any direction.
  - Continue using the spudger to pry open the base at each quarter turn until the sides separate easily.
- i** The black bottom will catch on the power cord plug, to prevent total dismantlement.



## Step 4 — Power Cord

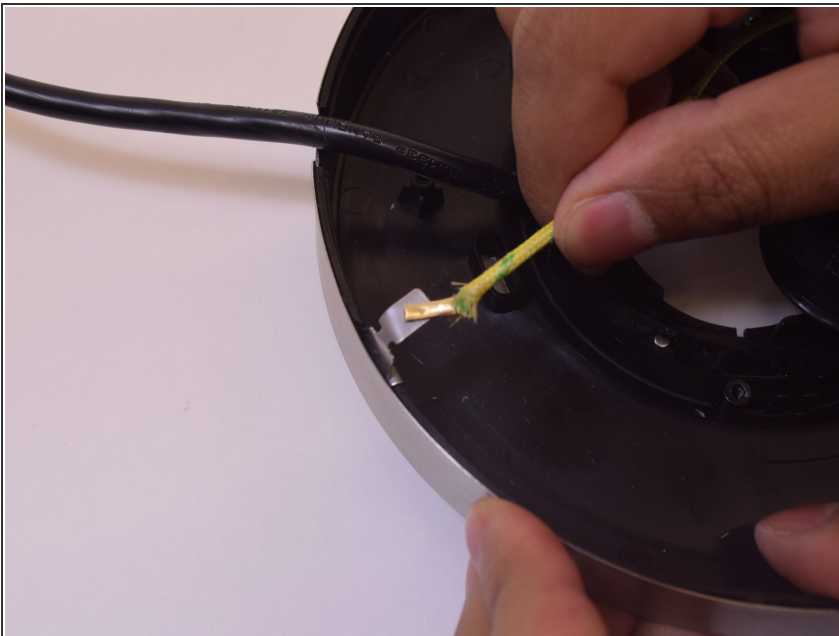


- Begin detaching the circuit board by removing four rounded top (12mm) Philips head screws (one from each corner).

 When removing thin metal components, hand protection is recommended to avoid small but painful slices to your fingers.

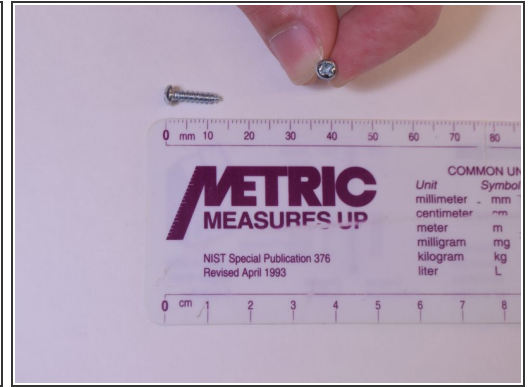
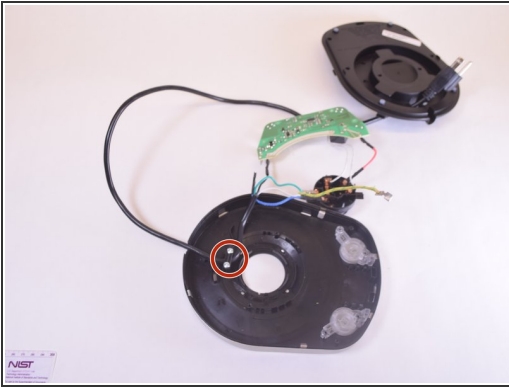
- Find the blue and black wires that connect to the circuit board from the power cord. Using moderate force, pull them away from their silver tabs on the circuit board.

## Step 5



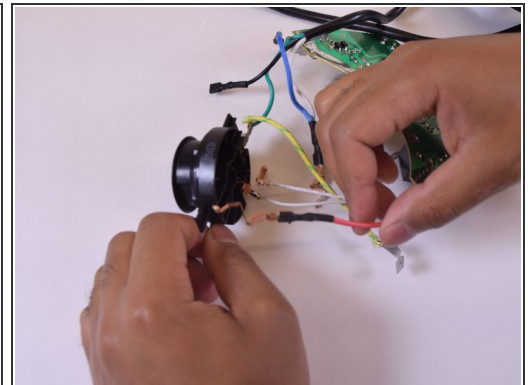
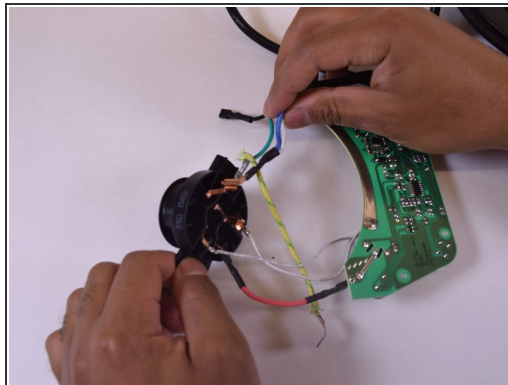
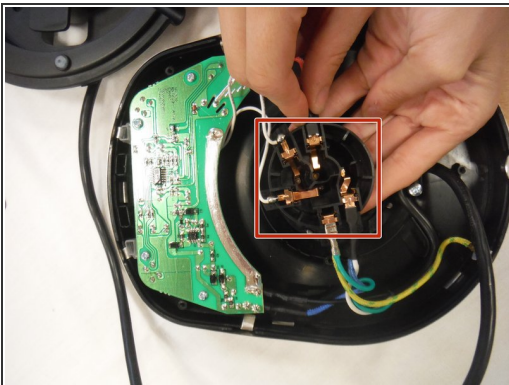
- Detach the power cord's grounding wire (yellow with green stripes) from the edge. First unbend the silver strip, then pull upwards with a small jiggle.

## Step 6



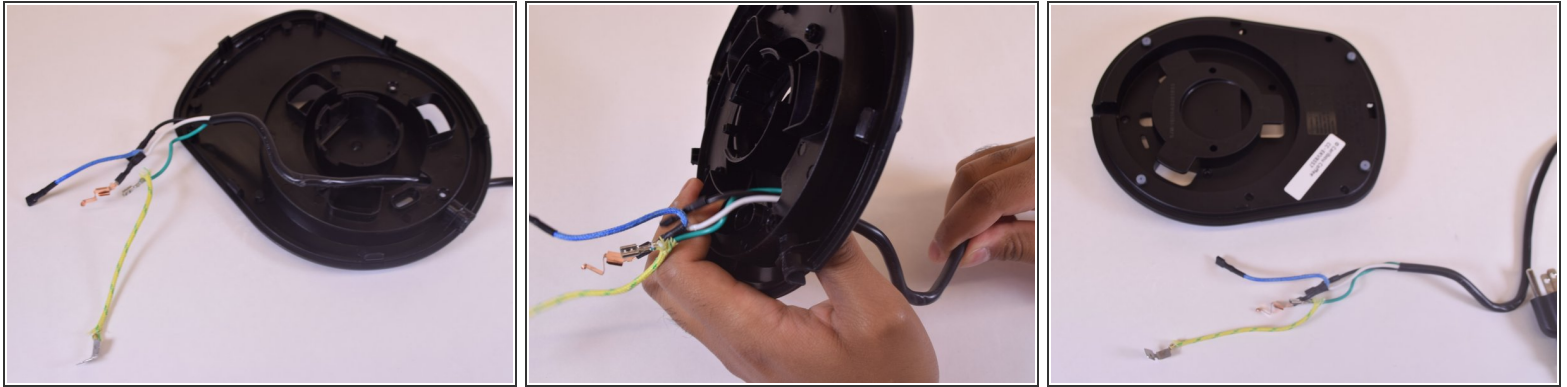
- Remove the two rounded top (12mm) Phillips Head screws from the 1" bar holding down the power cord.

## Step 7



- Disconnect five metal connectors attached to the center circle - three wires from the circuit board, and two wires from the power cord.
- From the circuit board, there are two white wires and one red wire to be disconnected.
- From the power cord, there is a green wire, as well as two wires (one blue, one white) connected with black electrical tape near the metal.

## Step 8



- At this point, as long as all the color-coded wires at the end are straightened, the power cord can be pulled through the black base bottom.
- Discard the old power cord and insert the new power cord by following these instructions in reverse.

To reassemble your device, follow these instructions in reverse order.