



Samsung SmartCam HD Speaker Replacement

Steps how to replace the SmartCam Speakers incase of malfunction.

Written By: Pranab Baidya



INTRODUCTION

Steps how to replace the SmartCam Speakers incase of malfunction.



TOOLS:

- [Spudger](#) (1)
 - [Flathead 3/32" or 2.5 mm Screwdriver](#) (1)
-

Step 1 — Speaker



- Remove the mount.
- Use the mount replacement guide if necessary to take the mount off.


Step 2



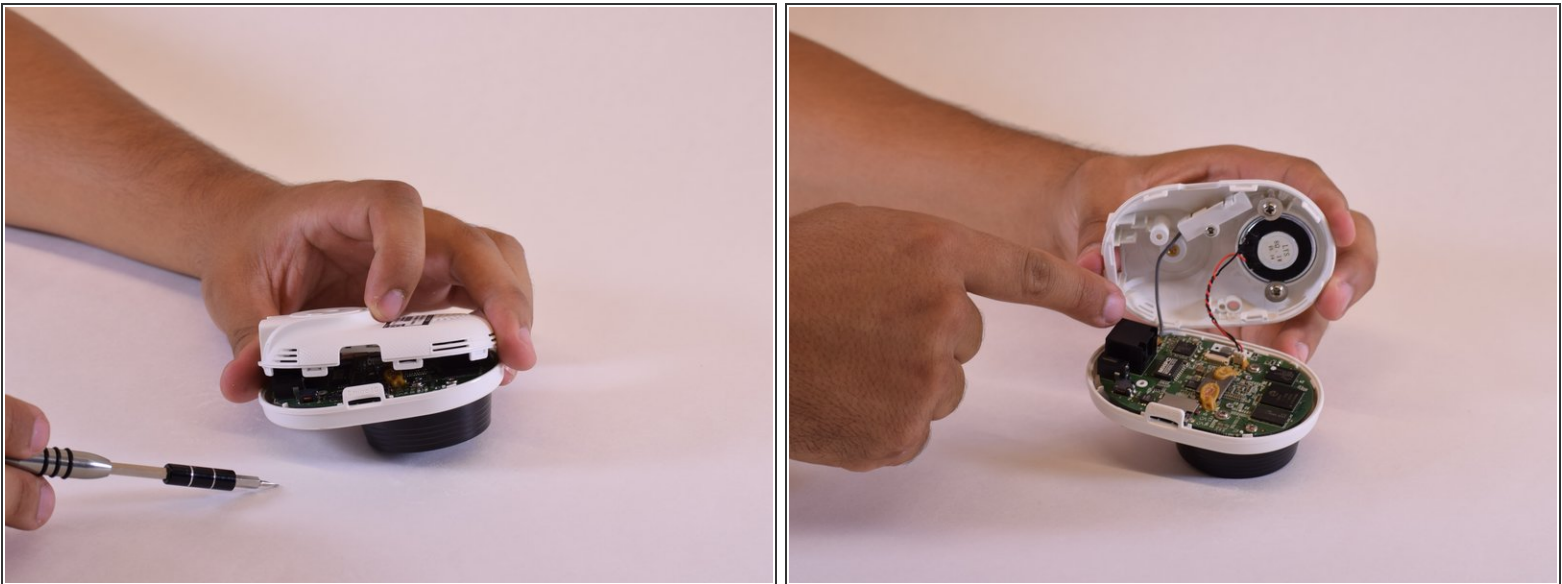
- Unscrew the screw next to the mount holder.

Step 3



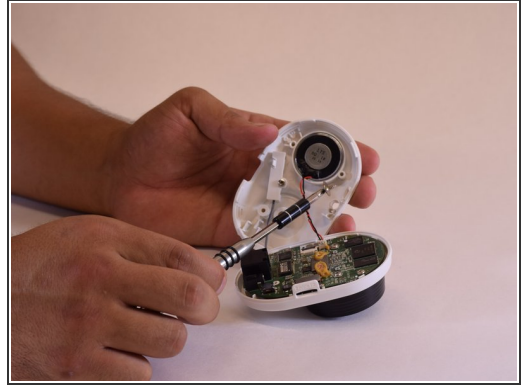
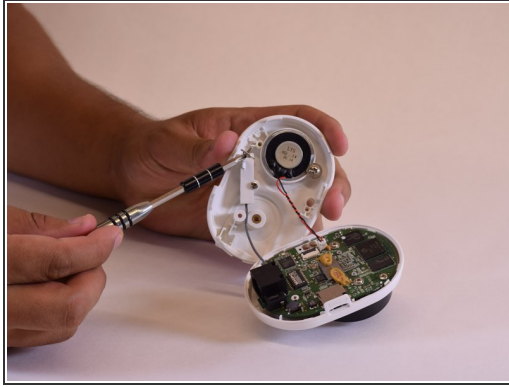
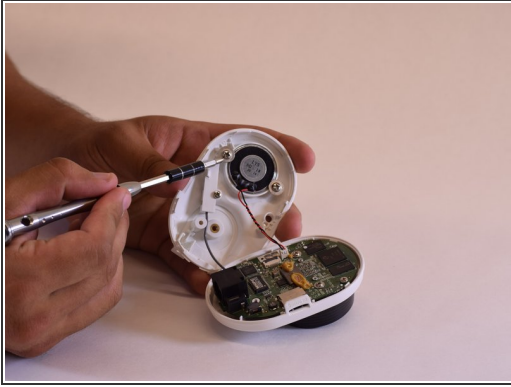
- At the bottom of the SmartCam there is a tab that you can stick a spudger in.
 - Once the spudger is in, gently pry it open.
 - Work your way around the SmartCam with the spudger losing 8 clips.
-  Buttons may fall out, but can be reinserted easily.

Step 4



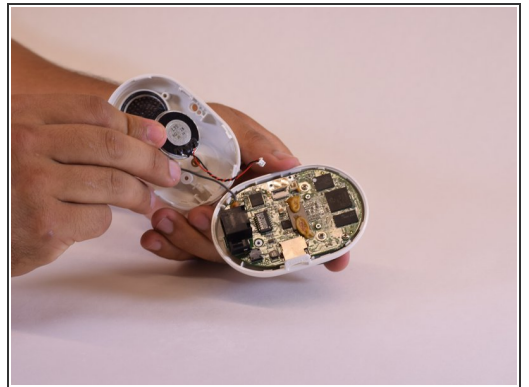
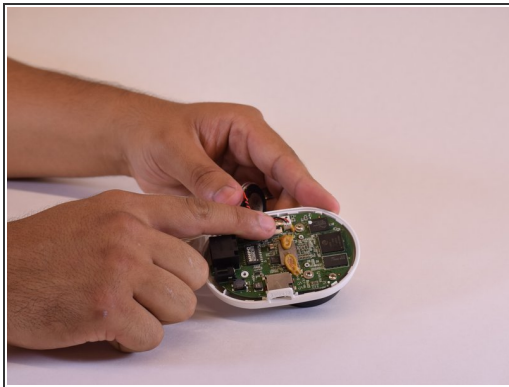
- Gently remove the cover.
- Beware of the wires connected to the camera.

Step 5



- The speaker should be attached to the cover with red and black wires going to the main board.
- Unscrew the two screws holding the speaker in place.

Step 6



- Gently take the speaker out of the cover.
- Take out the red and black wires from a small plug-in on the main board.

To reassemble your device, follow these instructions in reverse order.