



# iPhone 7 Plus Logic Board Replacement

Use this guide to remove or replace a faulty...

Written By: Jeff Suovanen



# INTRODUCTION

Use this guide to remove or replace a faulty logic board in your iPhone 7 Plus.

It's important to note that each iPhone's logic board and Touch ID fingerprint sensor are paired at the factory, so replacing the logic board will disable Touch ID *unless* you also install a replacement home button that has been properly paired to your new logic board.



## TOOLS:

- [Anti-Clamp](#) (1)
- [SIM Card Eject Tool](#) (1)
- [P2 Pentalobe Screwdriver iPhone](#) (1)
- [iOpener](#) (1)
- [Suction Handle](#) (1)
- [iFixit Opening Picks \(Set of 6\)](#) (1)
- [Spudger](#) (1)
- [Tri-point Y000 Screwdriver](#) (1)
- [Tweezers](#) (1)
- [Phillips #000 Screwdriver](#) (1)
- [Standoff Screwdriver for iPhones](#) (1)

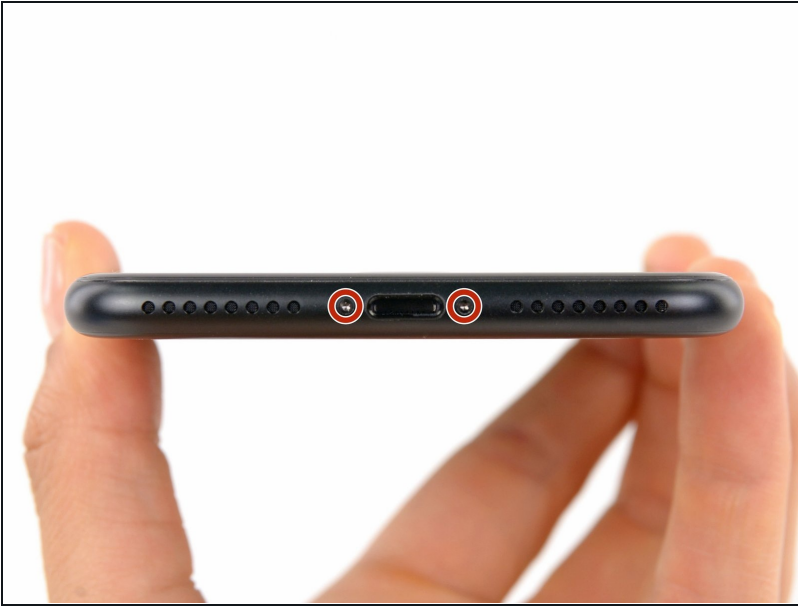


## PARTS:

- [iPhone 7 Plus A1784 \(AT&T\) Logic Board](#) (1)
- [iPhone 7 Plus A1661 \(Sprint\) Logic Board](#) (1)
- [iPhone 7 Plus Screw Set](#) (1)
- [iPhone 7 Plus Display Assembly Adhesive](#) (1)

---

## Step 1 — Pentalobe Screws



⚠ Before you begin, discharge your iPhone battery below 25%. A charged lithium-ion battery can catch fire and/or explode if accidentally punctured.

- Power off your iPhone before beginning disassembly.
  - Remove the two 3.4 mm pentalobe screws at the bottom edge of the iPhone.
- ⓘ Opening the iPhone's display will compromise its waterproof seals. Have [replacement seals](#) ready before you proceed past this step, or take care to avoid liquid exposure if you reassemble your iPhone without replacing the seals.

## Step 2 — Mark your opening picks



- ① If inserted too far, an opening pick can damage your device. Follow this step to mark your pick and prevent damage.
- Measure 3 mm from the tip and mark the opening pick with a permanent marker.
  - ① You can also mark the other corners of the pick with different measurements.
  - ① Alternatively, [tape a coin to a pick](#) 3 mm from the tip.



### Step 3 — Anti-Clamp instructions



- ① The next three steps demonstrate the [Anti-Clamp](#), a tool we designed to make the opening procedure easier. **If you aren't using the Anti-Clamp, skip down three steps for an alternate method.**
- ① For complete instructions on how to use the Anti-Clamp, [check out this guide](#).
- Pull the blue handle backwards to unlock the Anti-Clamp's arms.
- Slide the arms over either the left or right edge of your iPhone.
- Position the suction cups near the bottom edge of the iPhone just above the home button—one on the front, and one on the back.
- Squeeze the cups together to apply suction to the desired area.
- ① If you find that the surface of your iPhone is too slippery for the Anti-Clamp to hold onto, you can [use tape](#) to create a grippier surface.

## Step 4



- Pull the blue handle forwards to lock the arms.
- Turn the handle clockwise 360 degrees or until the cups start to stretch.
- Make sure the suction cups remain aligned with each other. If they begin to slip out of alignment, loosen the suction cups slightly and realign the arms.

## Step 5



- [Heat an iOpener](#) and thread it through the arms of the Anti-Clamp.
  - ⓘ You can also use a [hair dryer](#), [heat gun](#), or hot plate—but extreme heat can damage the display and/or internal battery, so proceed with care.
- Fold the iOpener so it lays on the bottom edge of the iPhone.
- Wait one minute to give the adhesive a chance to release and present an opening gap.
- Insert an opening pick into the gap.
  - ⓘ If the Anti-Clamp doesn't create a sufficient gap, apply more heat to the area and rotate the handle a quarter turn.
- ⚠ **Don't crank more than a quarter turn at a time, and wait one minute between turns. Let the Anti-Clamp and time do the work for you.**
- **Skip the next three steps.**

## Step 6 — Heat the display



- ① The next three steps show how to separate the screen using a suction cup.
- Heating the lower edge of the iPhone will help soften the adhesive securing the display, making it easier to open.
- Use a hairdryer or [prepare an iOpener](#) and apply it to the lower edge of the phone for about 90 seconds in order to soften up the adhesive underneath.

## Step 7 — Separate the display



- Apply a suction cup to the lower half of the front panel, just above the home button.
  - ① Be sure the suction cup does not overlap with the home button, as this will prevent a seal from forming between the suction cup and front glass.

## Step 8



- Pull up on the suction cup with firm, constant pressure to create a slight gap between the screen and the frame.
  - Insert an opening pick into the gap.
- ⓘ The watertight adhesive holding the screen in place is very strong; creating this initial gap takes a significant amount of force. If you're having a hard time opening a gap, apply more heat, and gently rock the screen up and down to weaken the adhesive until you create enough of a gap to insert your tool.

## Step 9



- Slide the opening pick up the left edge of the phone starting at the lower edge and moving towards the volume control buttons and silent switch, breaking up the adhesive holding the display in place.
- Stop near the top left corner of the display.

⚠ Do not try to pry the top edge of the display away from the rear case, as it is held in place by plastic clips that may break.



## Step 10 — Screen information



⚠ There are delicate cables along the right edge of your iPhone. **Don't insert your pick here,** as you may damage the cables.

## Step 11



- Re-insert your tool at the lower right corner of the iPhone, and slide it around the corner and up the right side of the phone to separate the adhesive.

⚠ Don't insert your pick more than 3 mm, as you may damage the display cables.

## Step 12



- Gently pull up on the suction cup to lift up the bottom edge of the display.  
**⚠ Do not raise the display more than 15° or you'll risk straining or tearing the ribbon cables connecting the display.**
- Pull on the small nub on the suction cup to remove it from the front panel.

## Step 13



- Slide an opening pick underneath the display around the top left corner and along the top edge of the phone to loosen the last of the adhesive.



## Step 14



- Slide the display assembly slightly down (away from the top edge of the phone) to disengage the clips holding it to the rear case.

## Step 15



- Open the iPhone by swinging the display up from the left side, like the back cover of a book.  
**⚠ Don't try to fully separate the display yet, as several fragile ribbon cables still connect it to the iPhone's logic board.**
- Lean the display against something to keep it propped up while you're working on the phone.

## Step 16 — Battery Disconnection



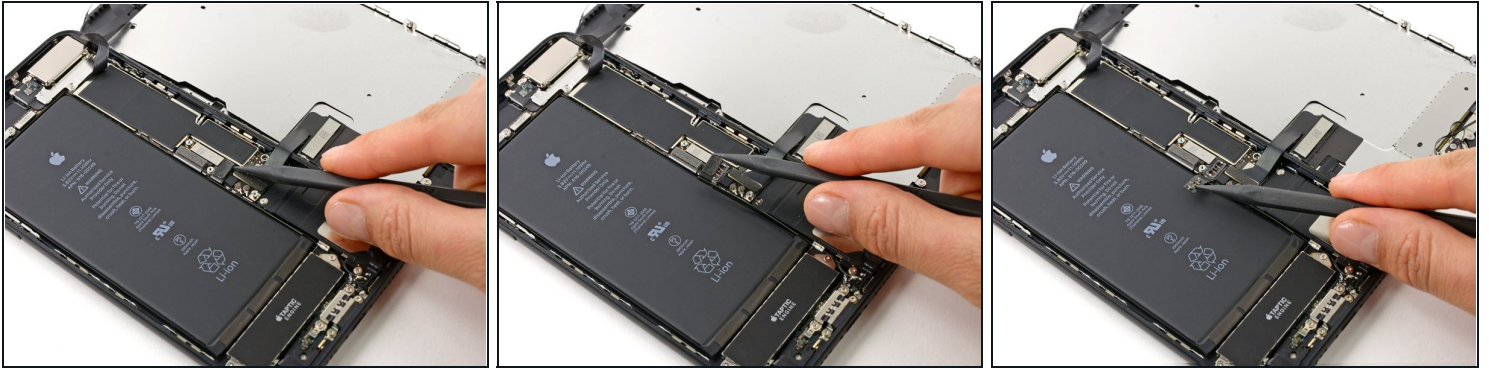
- Remove the following four tri-point Y000 screws securing the lower display cable bracket to the logic board:
  - Three 1.2 mm screws
  - One 2.6 mm screw

## Step 17



- Remove the lower display cable bracket.

## Step 18



- Use the point of a spudger to lift the battery connector out of its socket on the logic board.
- ① Bend the connector cable up slightly to prevent it from making contact with the socket and providing power to the phone.

## Step 19 — Display Assembly



**⚠ Make sure the battery is disconnected before you disconnect or reconnect the cables in this step.**

- Use the flat end of a spudger or a fingernail to disconnect the two lower display connectors by prying them straight up from their sockets on the logic board.
- ☑ To re-attach press connectors, press down on one end until it clicks into place, then repeat on the other end. Do not press down on the middle. If the connector is even slightly misaligned, the connector can bend, causing permanent damage.
- ☑ If you have a blank screen, white lines on the display, or partial or complete lack of touch response after reassembling your phone, try disconnecting and carefully reconnecting both of these cables and make sure they are fully seated.

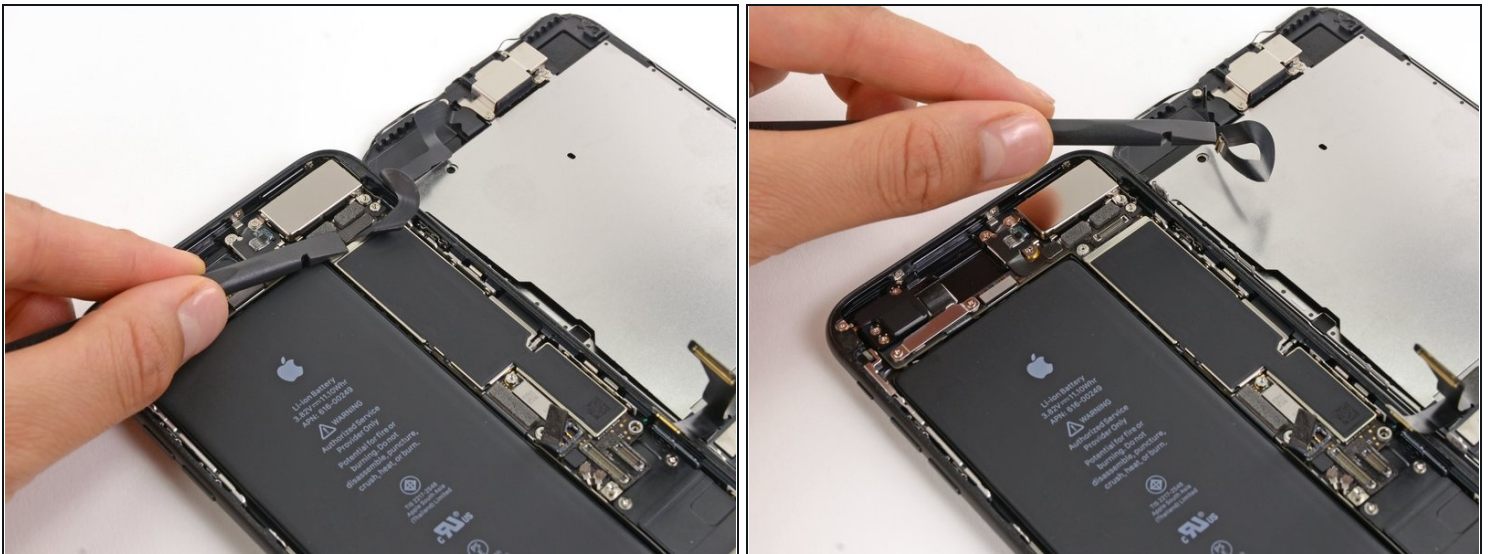


## Step 20



- Remove the three tri-point Y000 screws securing the bracket over the front panel sensor assembly connector:
  - One 1.3 mm screw
  - Two 1.0 mm screws
- Remove the bracket.

## Step 21



- Disconnect the front panel sensor assembly connector from its socket on the logic board.
- ☒ This press connector should also be reconnected one end at a time to minimize the risk of bending.

## Step 22



- Remove the display assembly.
- ★ During reassembly, pause here if you wish to [replace the adhesive around the edges of the display](#).

## Step 23 — Left Wi-Fi Antenna



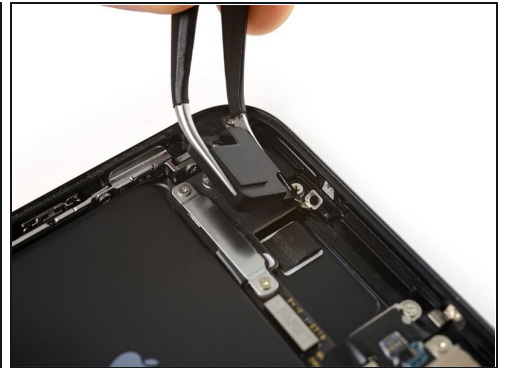
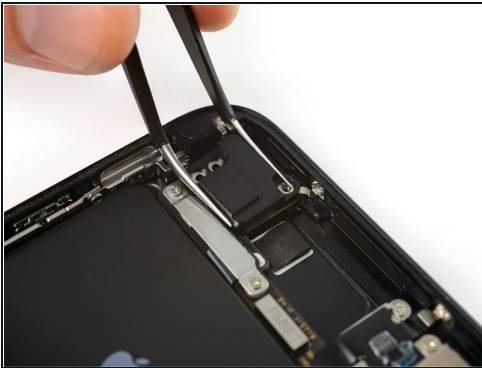
- Remove three Phillips screws securing the antenna component:
  - Two 1.3 mm screws
  - One 1.2 mm screw

## Step 24



- Remove the 1.3 mm Phillips screw securing the antenna component to the top edge of the rear case.

## Step 25



- ⓘ The screw boss at the top of the antenna component is tucked into a small recess in the top edge of the iPhone.
- Tilt the antenna component up towards the top of the phone.
  - Slide the screw boss down and out of its recess.



## Step 26



- Remove the top left antenna component.

## Step 27 — SIM Card



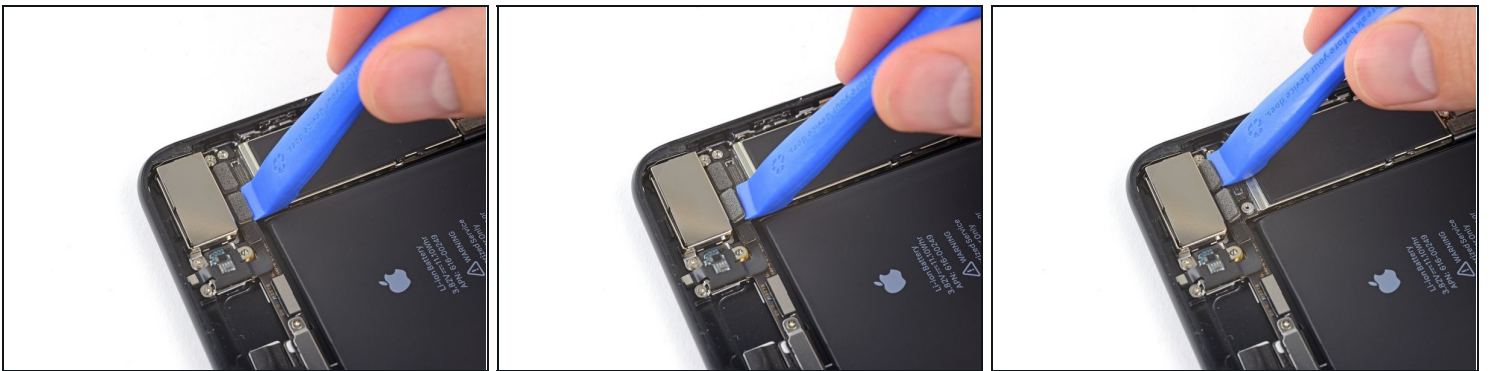
- Insert a SIM card ejector tool or a paperclip into the small hole in the SIM card tray.
- Press firmly to eject the tray.

## Step 28



- Remove the SIM card tray from the iPhone.
  - ⓘ The SIM card will fall out of the tray easily.
- ☑ When reinserting the SIM card, ensure that it is in the proper orientation relative to the tray.
- ☑ A thin rubber gasket around the SIM tray provides water and dust protection. If this gasket is damaged or missing, replace the gasket to protect your iPhone's internal components.

## Step 29 — Logic Board



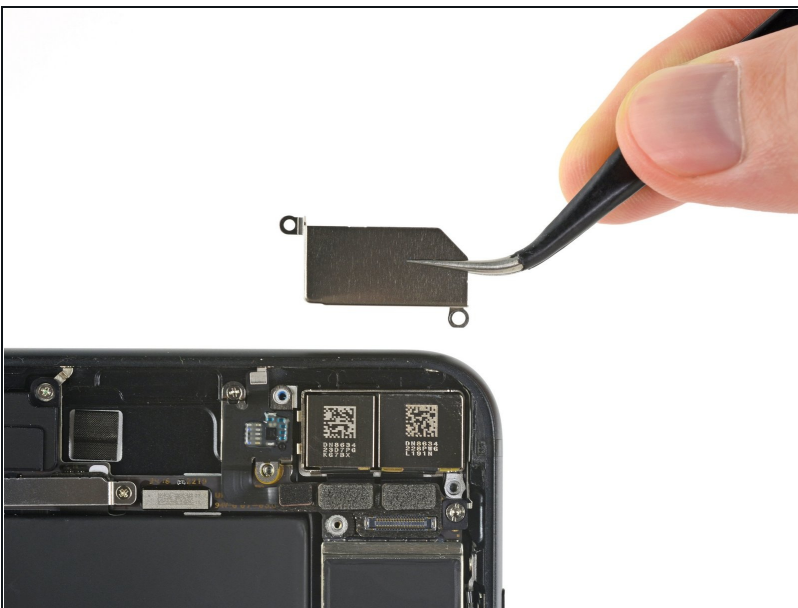
- Use an iFixit opening tool or a fingernail to disconnect the dual camera cable connectors by prying them straight up from their sockets.

## Step 30



- Remove the two screws securing the rear-facing camera bracket:
  - One 1.6 mm Phillips screw
  - One 2.2 mm standoff screw
- ⓘ Standoff screws are best removed using a [standoff screwdriver](#) or bit.
- ⚠ In a pinch, a small flathead screwdriver will do the job—but use extra caution to ensure it doesn't slip and damage surrounding components.

## Step 31



- Remove the bracket covering the rear-facing camera.

## Step 32



- Remove the two 1.3 mm Phillips screws securing the upper cable bracket.

## Step 33



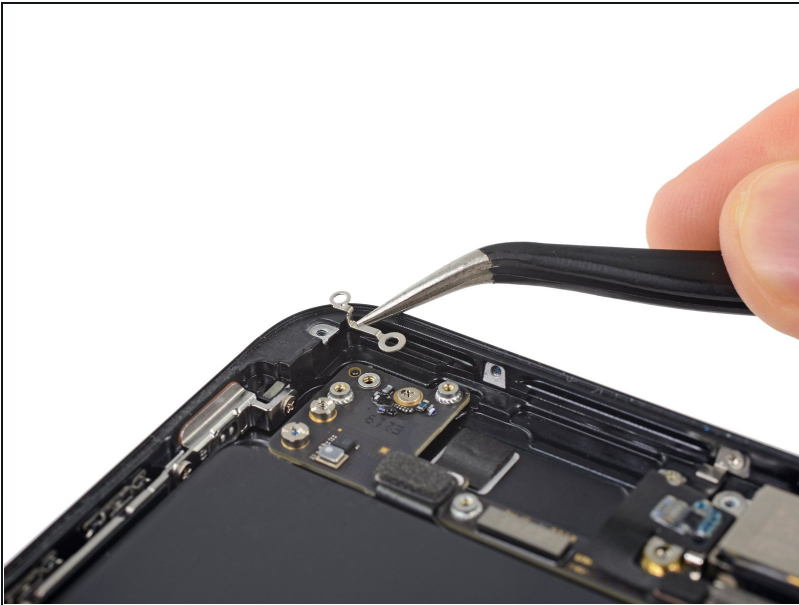
- Remove the upper cable bracket.

## Step 34



- Remove the two 1.3 mm Phillips screws securing the grounding clip at the top left edge of the logic board.

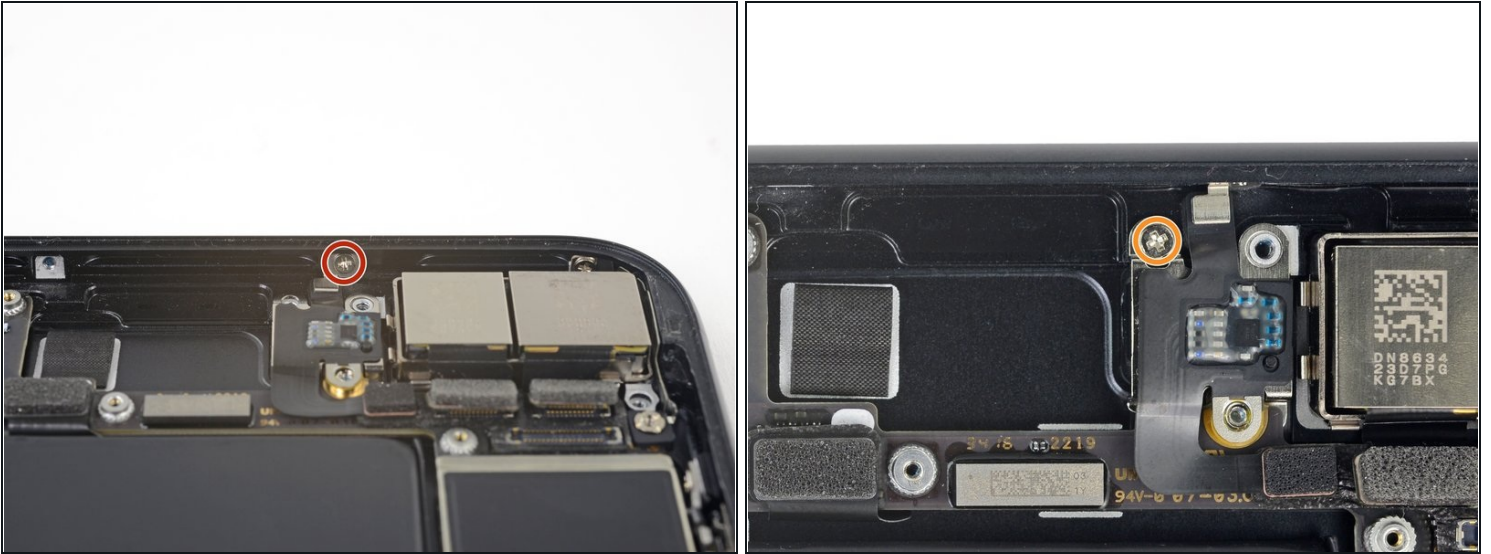
## Step 35



- Remove the grounding clip.



## Step 36



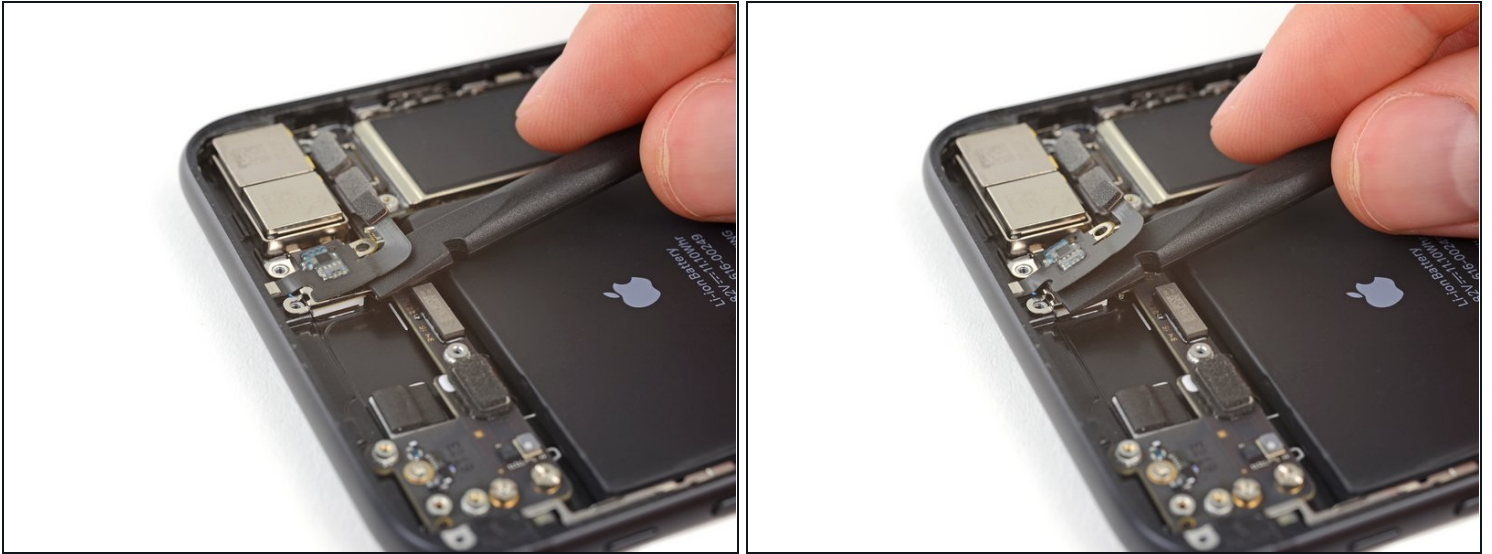
- Remove the 1.3 mm Phillips screw securing the antenna flex cable to the top edge of the iPhone's rear case.
- Remove the remaining Phillips screw from the antenna flex cable.

## Step 37



- Use a fingernail or the sharp end of an iFixit opening tool to pry up and disconnect the antenna flex cable connector from the logic board.

## Step 38



- Slide the flat edge of a spudger underneath the antenna flex cable to separate the adhesive holding it in place.

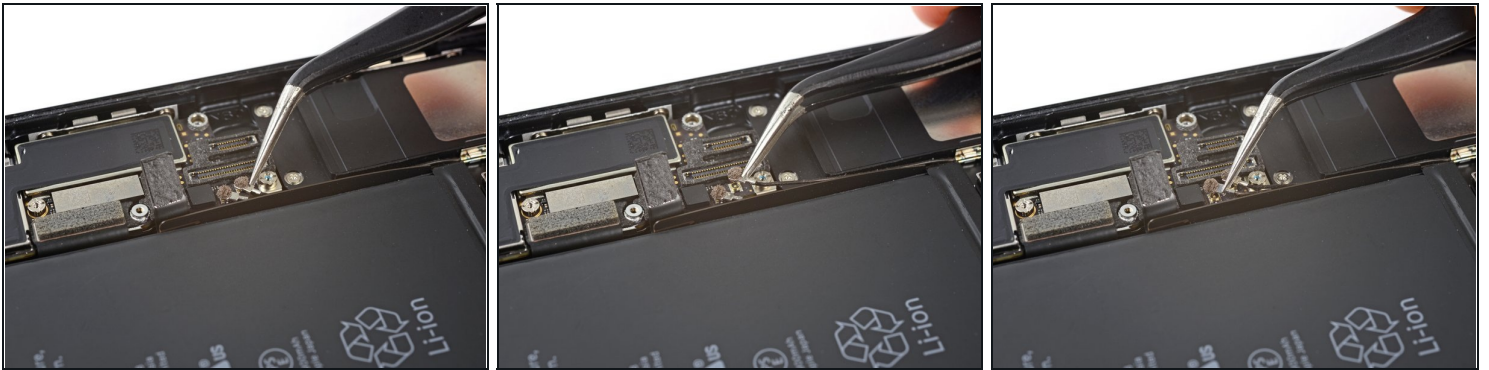
## Step 39



- ① The screw boss at the top of the antenna flex cable is tucked into a small recess in the top edge of the iPhone.
- Tilt the antenna flex cable up toward the top of the iPhone.
- Slide the screw boss down and out of its recess.
- Remove the antenna flex cable.



## Step 40



- Use a thin pry tool or [tweezers](#) to carefully pry up and disconnect the two coaxial cable connectors from the logic board.
  - ✦ During reassembly, these can be tricky to reconnect. One at a time, hold each connector in place over its socket and press down with the flat of your spudger. The connector should snap into place.
  - ⓘ The coaxial cable closest to the battery connector is responsible for the Wi-Fi Diversity Antenna. The other coaxial cable is for the secondary cell antenna. Make sure to reconnect them to the correct sockets.

## Step 41



- Disconnect the two remaining ribbon cables from the logic board:
  - Disconnect the upper cable connector by prying from the top
  - Disconnect the Lightning port connector by prying along the outer edge

## Step 42



- Remove the seven screws securing the logic board:
  - One 1.3 mm Phillips screw
  - Two 2.1 mm standoff screws
  - One 2.0 mm standoff screw with a large head
  - One 2.0 mm standoff screw with a small head
  - Two 2.2 mm standoff screws

ⓘ Standoff screws are best removed using a [standoff screw bit](#) and a driver handle.

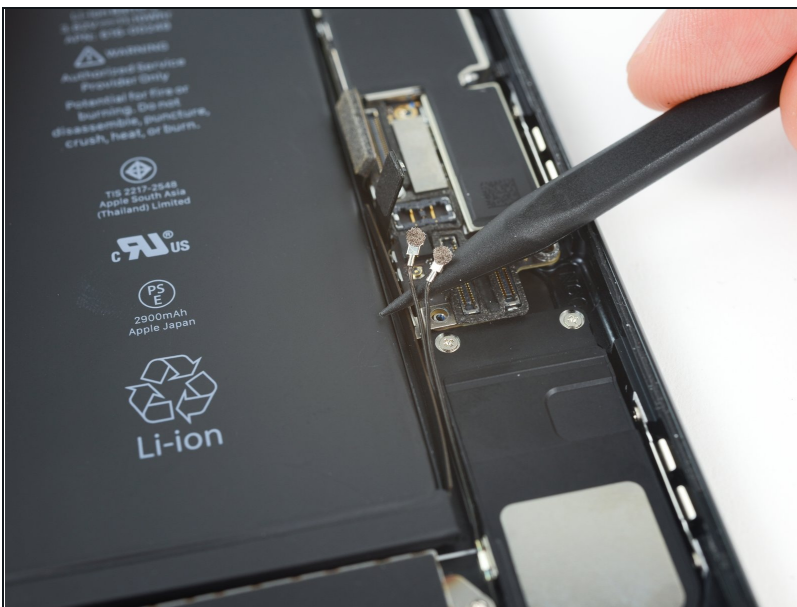
⚠ In a pinch, a small flathead screwdriver will do the job—but use extra caution to ensure it doesn't slip and damage surrounding components.

## Step 43



- Use the point of a spudger to push the SIM card eject plunger out of the logic board's way.

## Step 44



- Use the point of a spudger to carefully de-route the two coaxial cables from the small metal clip holding them to the logic board.

## Step 45



- Lift the logic board from the bottom edges and slide it toward the bottom of the iPhone to remove it.  
**⚠ Be careful not to snag the logic board on any cables.**
- ☑ During reassembly, note the position of the black grounding clip at the top right edge of the logic board, near the rear cameras. The logic board should slide *underneath* the clip.

---

To reassemble your device, follow these instructions in reverse order.