



How to adress scroll-wheel issues with Roccat Kone mice

The sensor that ROCCAT uses for their scroll...

Written By: Isip V Nicola



INTRODUCTION

The sensor that ROCCAT uses for their scroll wheels is very sensitive to dust, and after some time it may start to malfunction by failing to register scroll actions or even scrolling in the wrong direction.

In [this video](#), you will find a short review of the Kone[+] and the manifestation of the glitch.

Before you attempt to perform this repair, make sure the glitch is permanent, and attempt to fix it with a few blows of compressed air.



TOOLS:

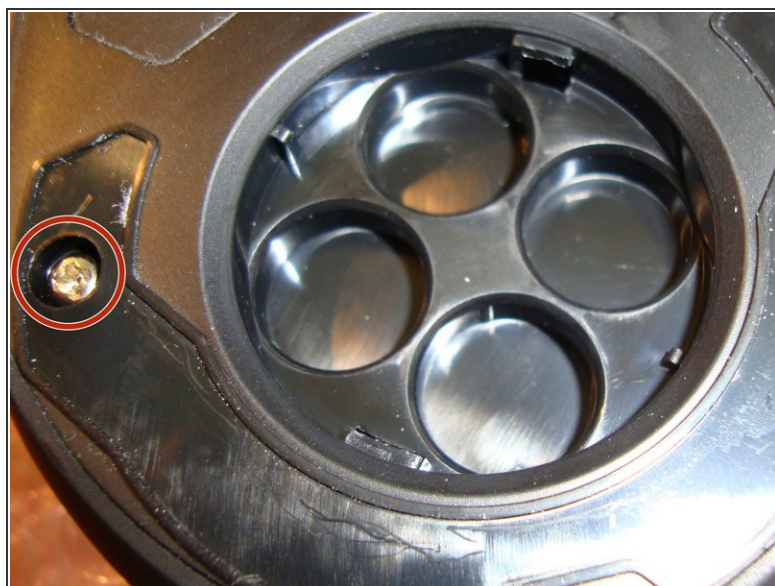
- [Phillips #0 Screwdriver](#) (1)
 - [Tweezers](#) (1)
 - [Jimmy](#) (1)
 - [Electrical Contact Cleaner](#) (1)
-

Step 1 — Disconnect the Mouse/Cover Sensor



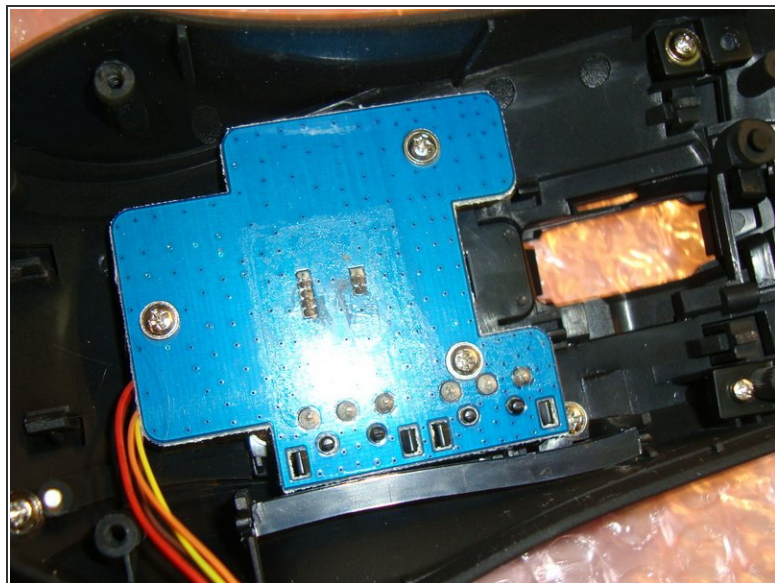
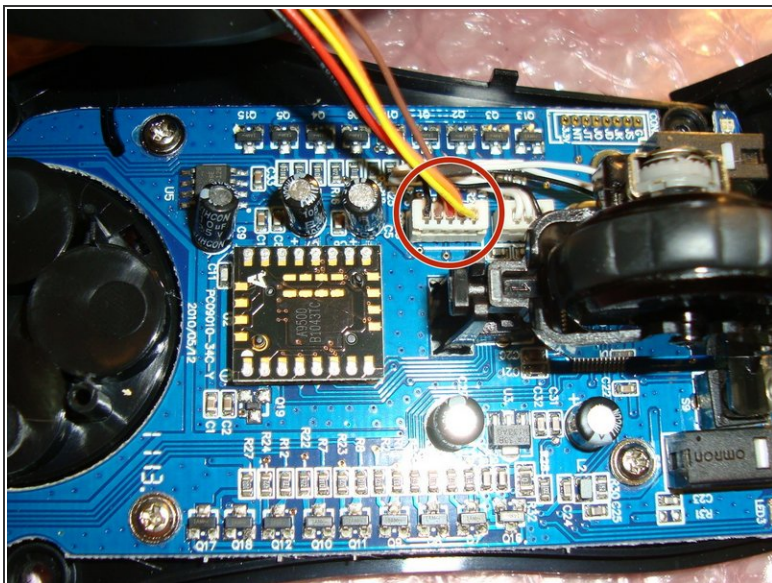
- Unplug the mouse.
- Cover the optical sensor with tape.

Step 2 — Loosen the Covers/Remove Screws



- With a heat gun/hair dryer, warm up the covers. This will loosen up the glue that keeps the glider feet attached to the mouse.
- Once hot, gently try to lift the gliders and work the edges.
 - ☑ To reapply, heat the gliders to make the the glue soft, then firmly hold it in place until it cools and holds its grip.
- Once the gliders are removed, the screws are easily visible
- ⓘ Don't touch or dirty the adhesive side of the gliders, or else they won't stick back.

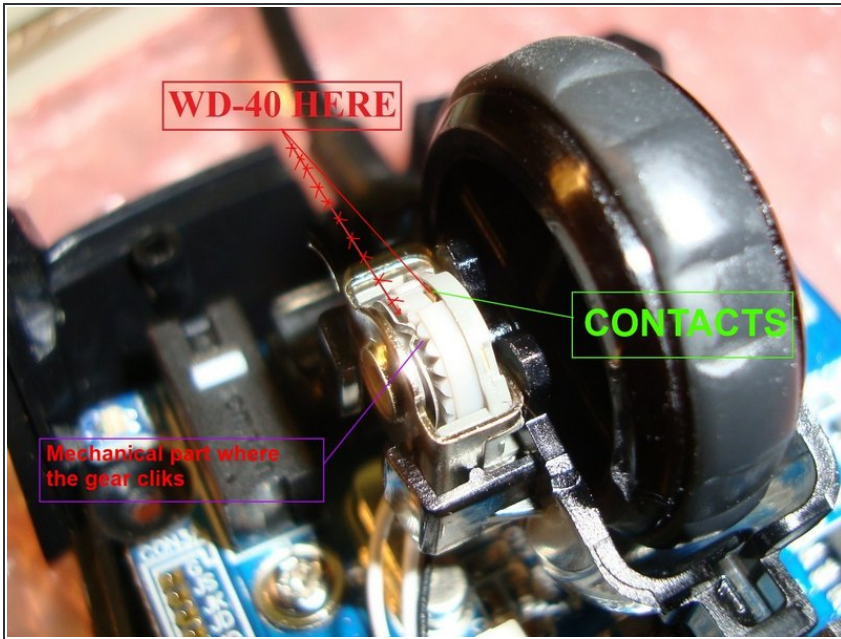
Step 3 — Separate the plastic shell



⚠ Be gentle when performing this step. Most Kone models have wires connecting the halves of the shell that may be damaged if you yank on them.

- Turn the mouse back over and slowly lift off the top cover.
- ⓘ You may proceed without disconnecting the two halves if you wish. Ensure both halves are well supported so that the cable is not strained.
- Use tweezers to disconnect the wires. If your model uses a ribbon cable, you will need to disengage the locking tab on the connector before pulling the cable out.

Step 4 — Where to place the grease and testing the mouse



- Spray electrical contact cleaner directly in the space indicated in the picture for several seconds, moving the scroll wheel back and forth as you spray.
- ⓘ Once the cleaner spray has evaporated, you may try connecting the mouse to your computer for testing before reassembly. You may encounter odd behavior if you leave the PCB in the shell disconnected while doing this.
- ⓘ If several repetitions of this step are not effective, the rotary encoder may be permanently damaged. Consider replacing it or the entire mouse.

To reassemble your device, follow these instructions in reverse order.