



# Belkin Car Charger 3.4A Power Adapter Model FBJ187 Fuse Replacement

Replace the fuse in the Belkin Car Charger Model FBJ187

Written By: Dhyan



## INTRODUCTION

The Belkin Car Charger 3.4A Model FBJ187 is designed for 12V car power outlets. If you accidentally in a 24V truck outlet, then it does not work anymore, because the fuse has blown. Here is how the fuse can be bridged with a thin wire. After that, the car charger usually works again.



### TOOLS:

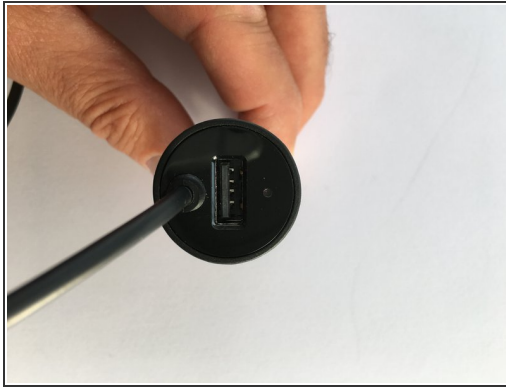
- [New Item](#) (1)
- [New Item](#) (1)



### PARTS:

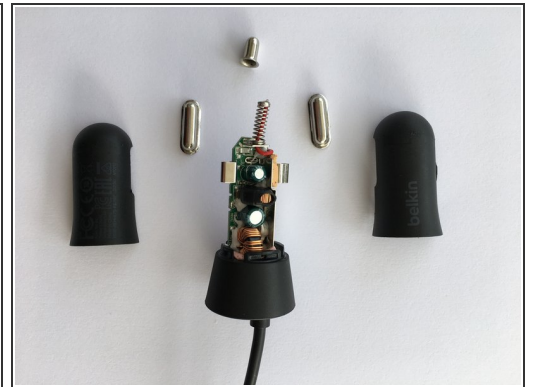
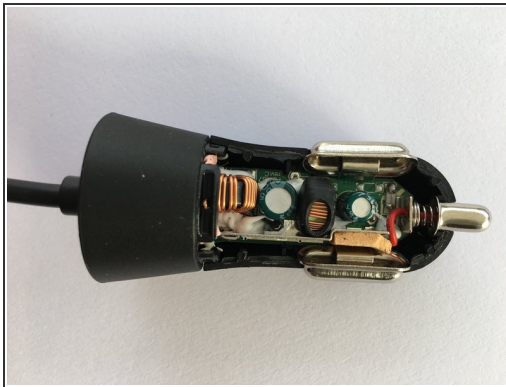
- [New Item](#) (1)

## Step 1 — Fuse



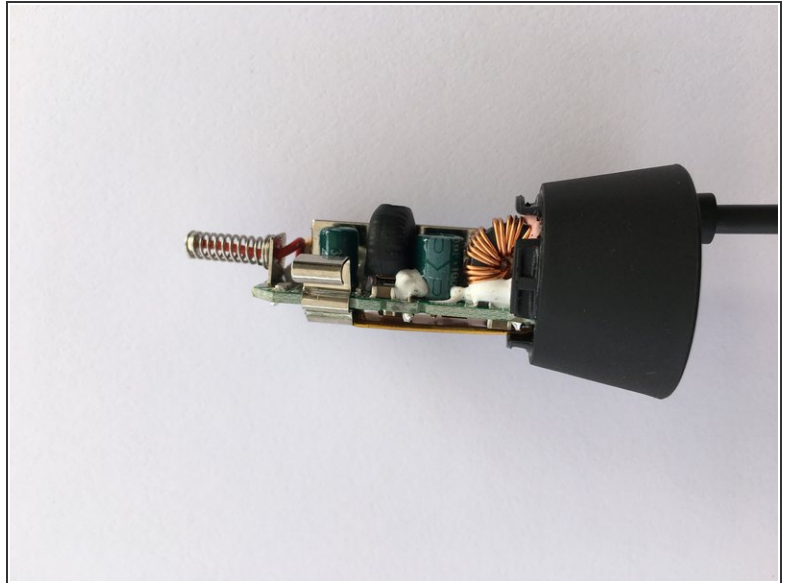
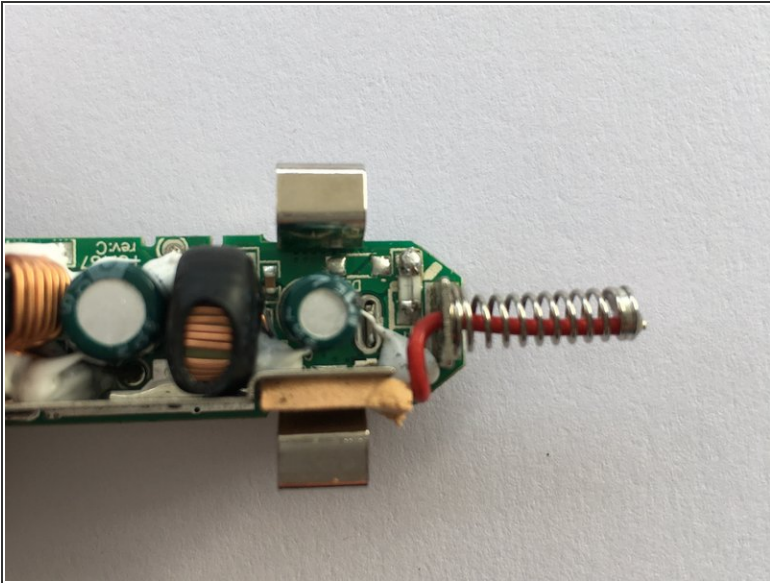
- That's what the Car Charger looks like.

## Step 2



- The two plastic half-shells front are plugged and glued (plastic welded). Using a sharp knife (or similar thin, sturdy object), !\$\$\$\* between the negative pole and the plastic housing on both sides and press the two plastic halves apart.

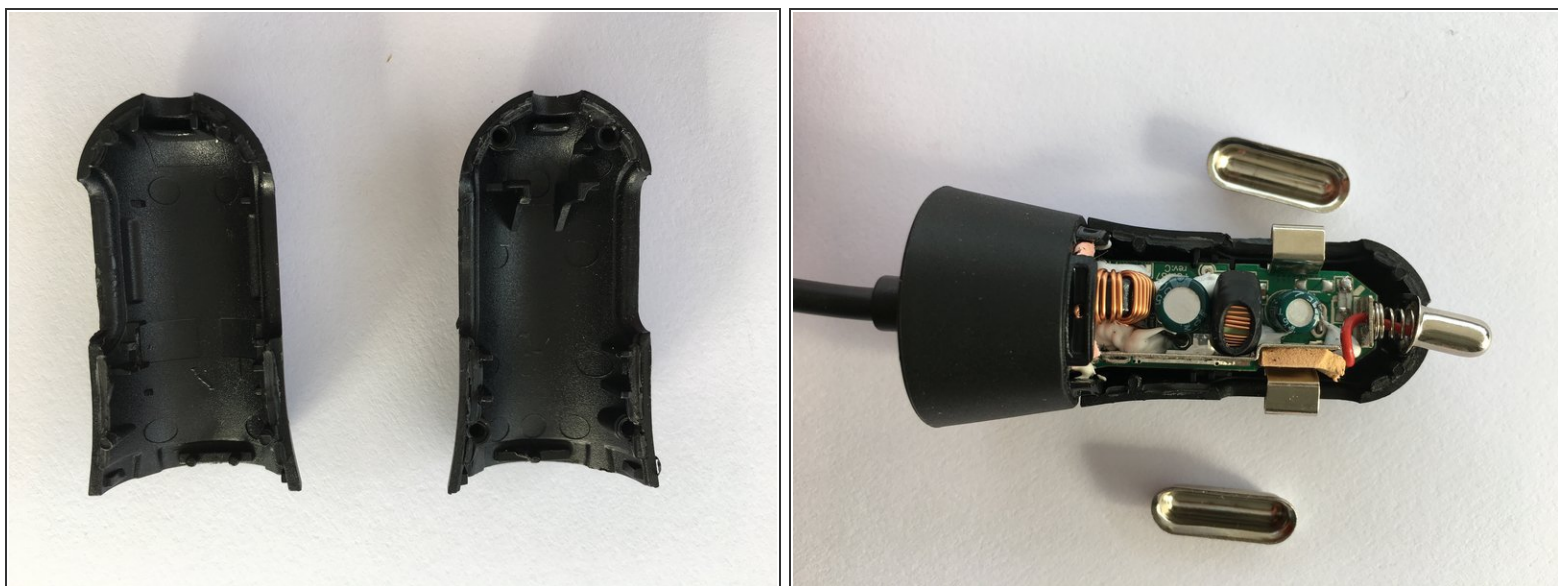
## Step 3



- In the first picture on the top right above the red wire is a small white soldered fuse chip. Whether the fuse is OK can be checked with a continuity tester or ohmmeter. The fuse can be soldered and replaced, or more simply a very thin wire can be soldered over the fuse as shown in the picture.



## Step 4



- The two half-shells are not completely identical. When assembling, pay attention to the correct orientation. The small round pins fit into the corresponding holes. Before gluing with seconds glue, check the function in a 12V car socket.

Repeat the steps in order to reassemble your device.