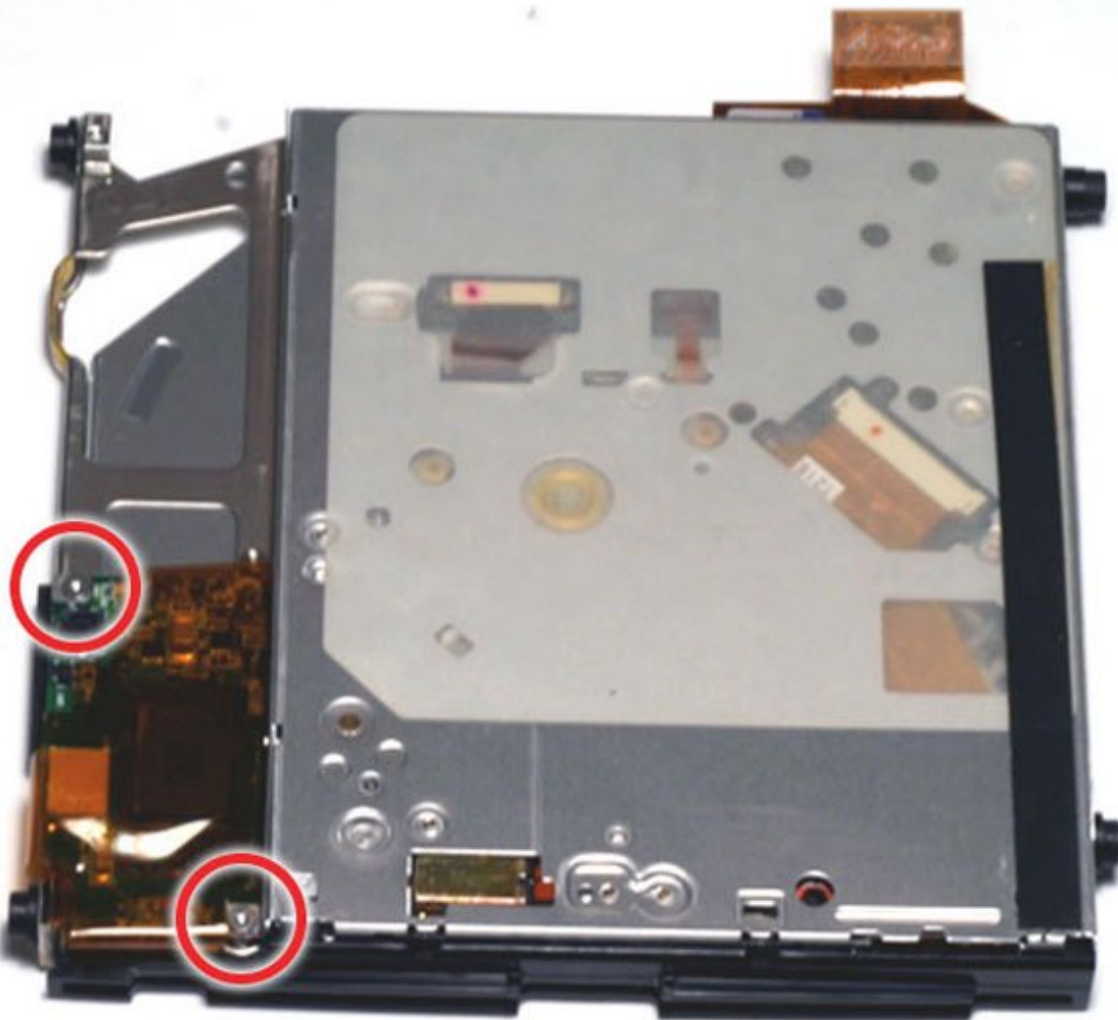




# PowerBook G4 Titanium DVI Inverter Replacement

The inverter powers the LCD backlight and is not a difficult part to replace.

Written By: iRobot



## INTRODUCTION

The inverter powers the LCD backlight and is not a difficult part to replace.



### TOOLS:

- [T6 Torx Screwdriver](#) (1)
- [T8 Torx Screwdriver](#) (1)



### PARTS:

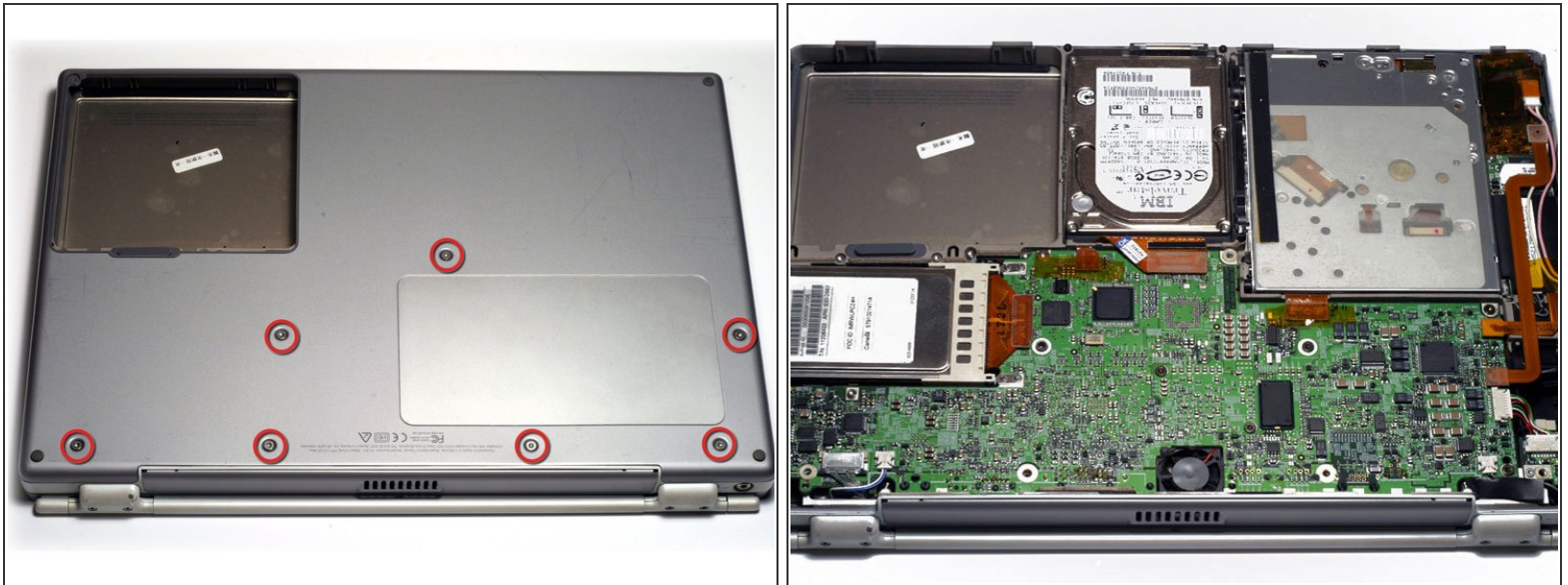
- [G4 Titanium DVI Inverter Board](#) (1)
- [G4 Titanium DVI Inverter-Logic Cable](#) (1)

## Step 1 — Battery



- Locate the battery release tab on the underside of the G4.
- Slide the battery release tab to the left and lift the battery out of the computer.

## Step 2 — Lower Case



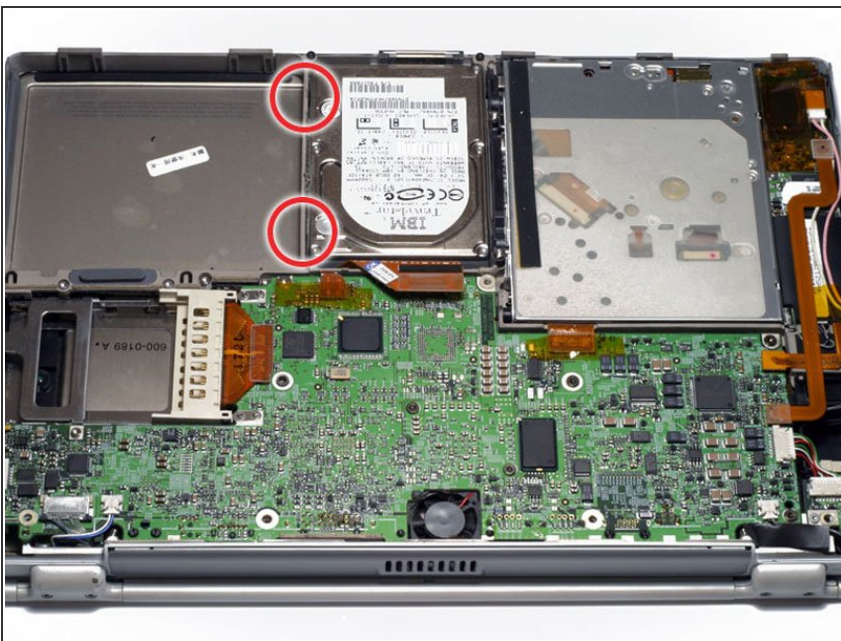
- Remove the seven T8 Torx screws from the lower case.
- Using your thumbs, slide the lower case toward the front of the computer.
- The lower case may stick in the front on a tab just above the center of the optical drive. Be careful as you work the case off, or you may break the thin strip of plastic just above the drive.
- Lift the lower case off.

## Step 3 — Hard Drive



- Disconnect the hard drive ribbon from the logic board using a spudger or the tip of your finger.

## Step 4



- To free the hard drive, remove the two T8 Torx screws from the right wall of the battery housing.



## Step 5



- Remove the hard drive by lifting the left edge up and out of the computer.
- ⓘ There are four rubber bumpers that fit over the hard drive screws. Ensure that these bumpers come out when you remove the hard drive.

## Step 6



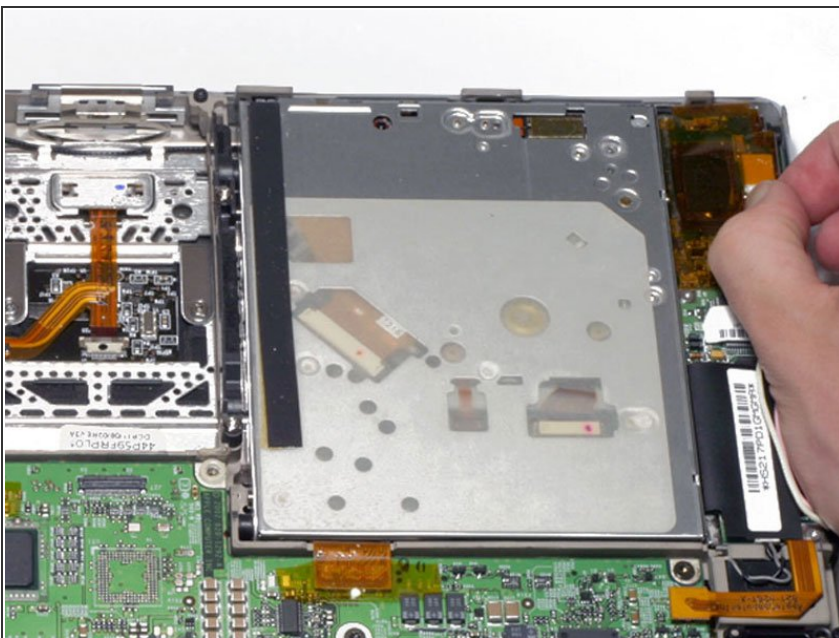
- Your laptop should look approximately like this.

## Step 7 — Optical Drive Removal



- Disconnect and remove the indicated orange ribbon cable.

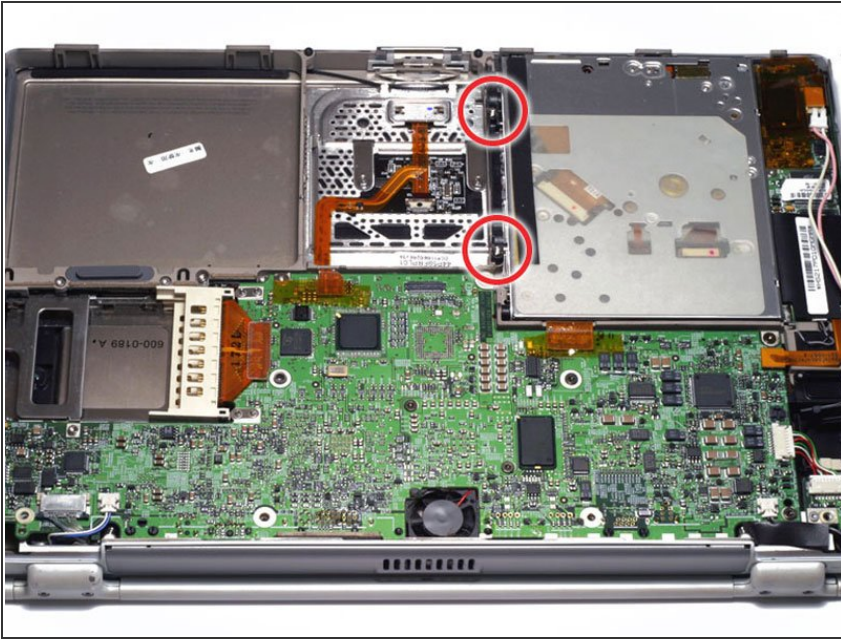
## Step 8



- Disconnect the pink and white inverter cable from the inverter board.
- ⓘ The display inverter has orange plastic shielding around it that looks similar to the tape used elsewhere within the computer. Do not remove the shielding from the inverter.

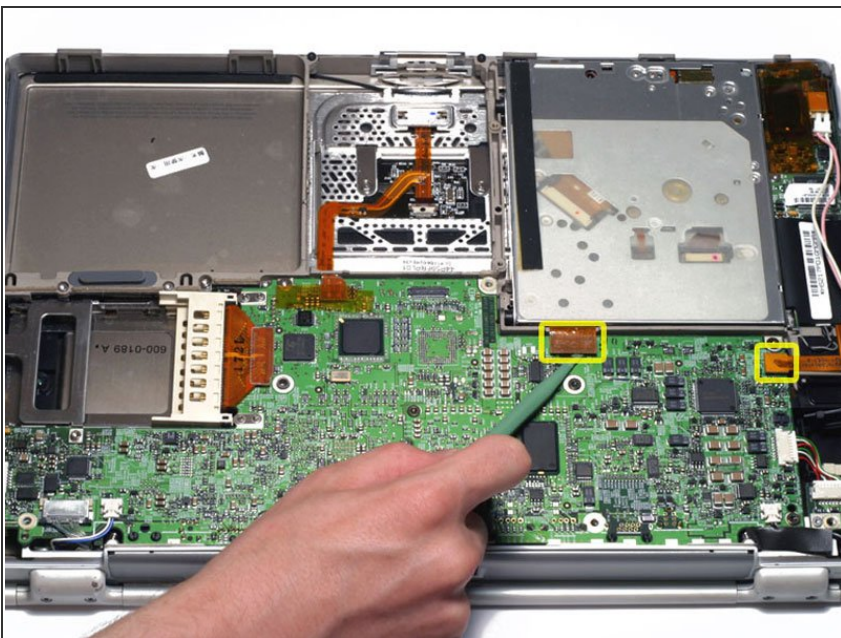


## Step 9



- Remove the two silver T8 Torx screws from the black plastic bar.
- Lift the black plastic bar out.
- ✦ Reassembly will be significantly easier if you reseal the hard drive **before** returning the black bar to its place.

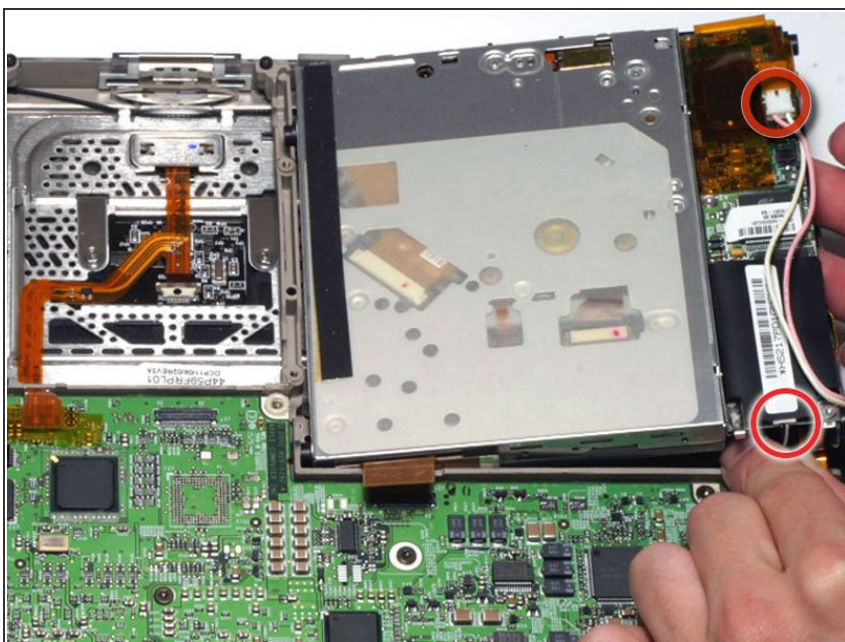
## Step 10



- Disconnect the two orange connectors from the logic board, removing tape as necessary.

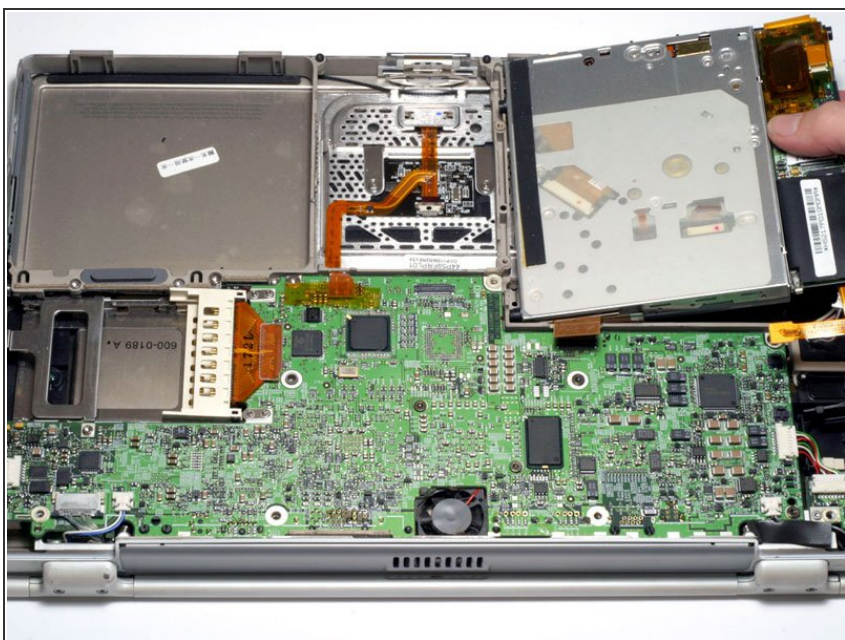


## Step 11



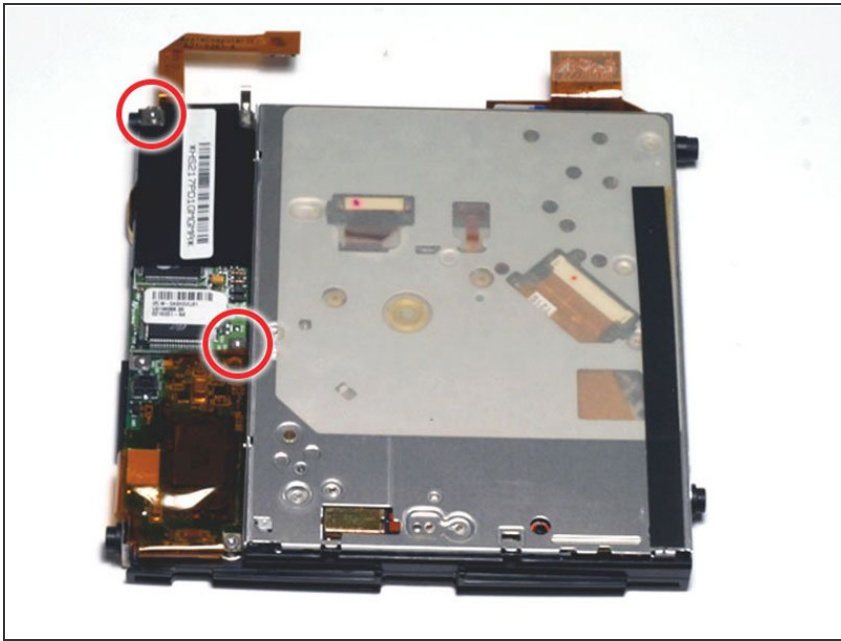
- Lift the drive up on the right side so that you can access and disconnect the modem cable and inverter cable.

## Step 12



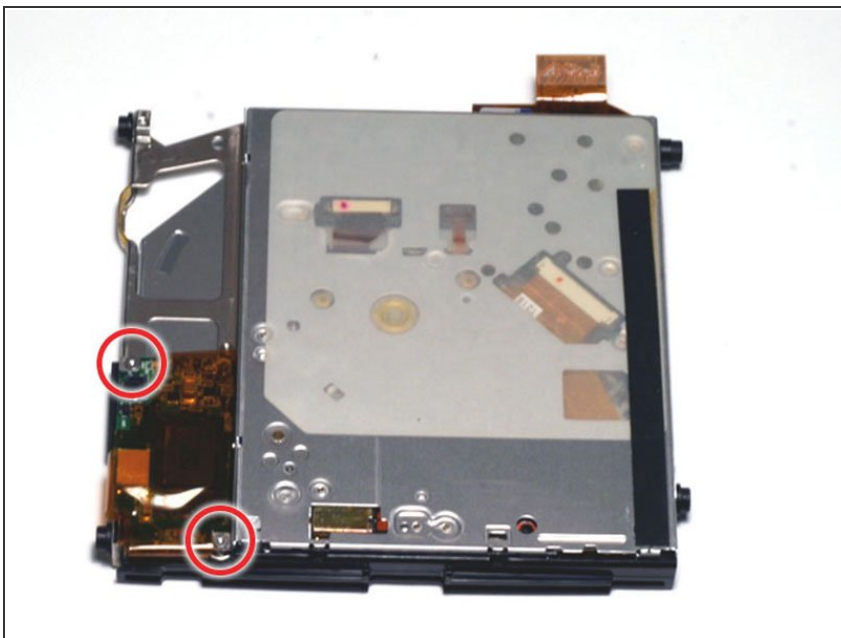
- Remove the drive by lifting the right edge up and out of the computer.

## Step 13 — Modem



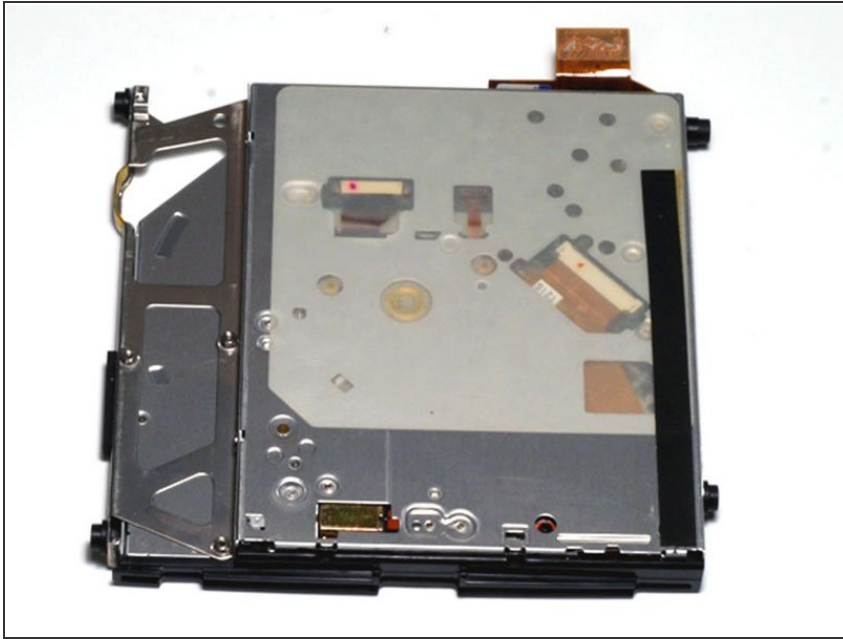
- Remove the two T6 Torx screws from the modem.
- Lift the modem off the optical drive, carefully guiding the orange ribbon cable through the space in the drive mount.

## Step 14 — Inverter



- Remove the two T6 Torx screws from the inverter board.
- Lift the inverter board off the optical drive.

## Step 15



- Your laptop should look approximately like this.

To reassemble your device, follow these instructions in reverse order.