



# Hisense Sero 7 Pro Front Camera Replacement

This guide will assist the user in replacing the front camera in the Hisense Sero 7 Pro tablet.

Written By: Nathanael LaPointe



---

## INTRODUCTION

Replacing the front camera can be completed in just a few minutes of time with a plastic pry tool.



### TOOLS:

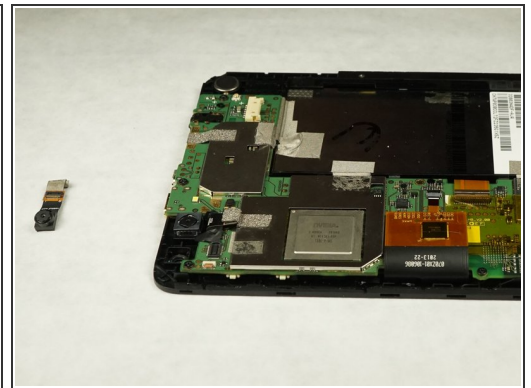
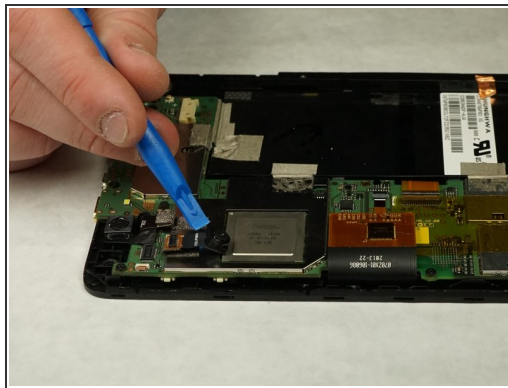
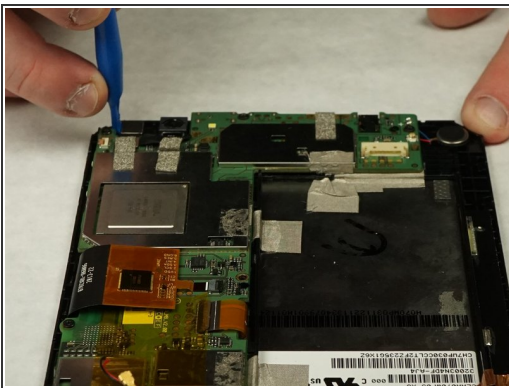
- [iFixit Opening Tools](#) (1)
-

## Step 1 — Front Camera



- Using a plastic opening tool, pry open the back cover from the tablet.

## Step 2



- Using the pry tool, pry up the front facing camera.
- Use a plastic opening tool to detach the front camera ribbon cable from the press-fit connector. Put the opening tool under the edge of the connector and gently pop it up.

To reassemble your device, follow these instructions in reverse order.