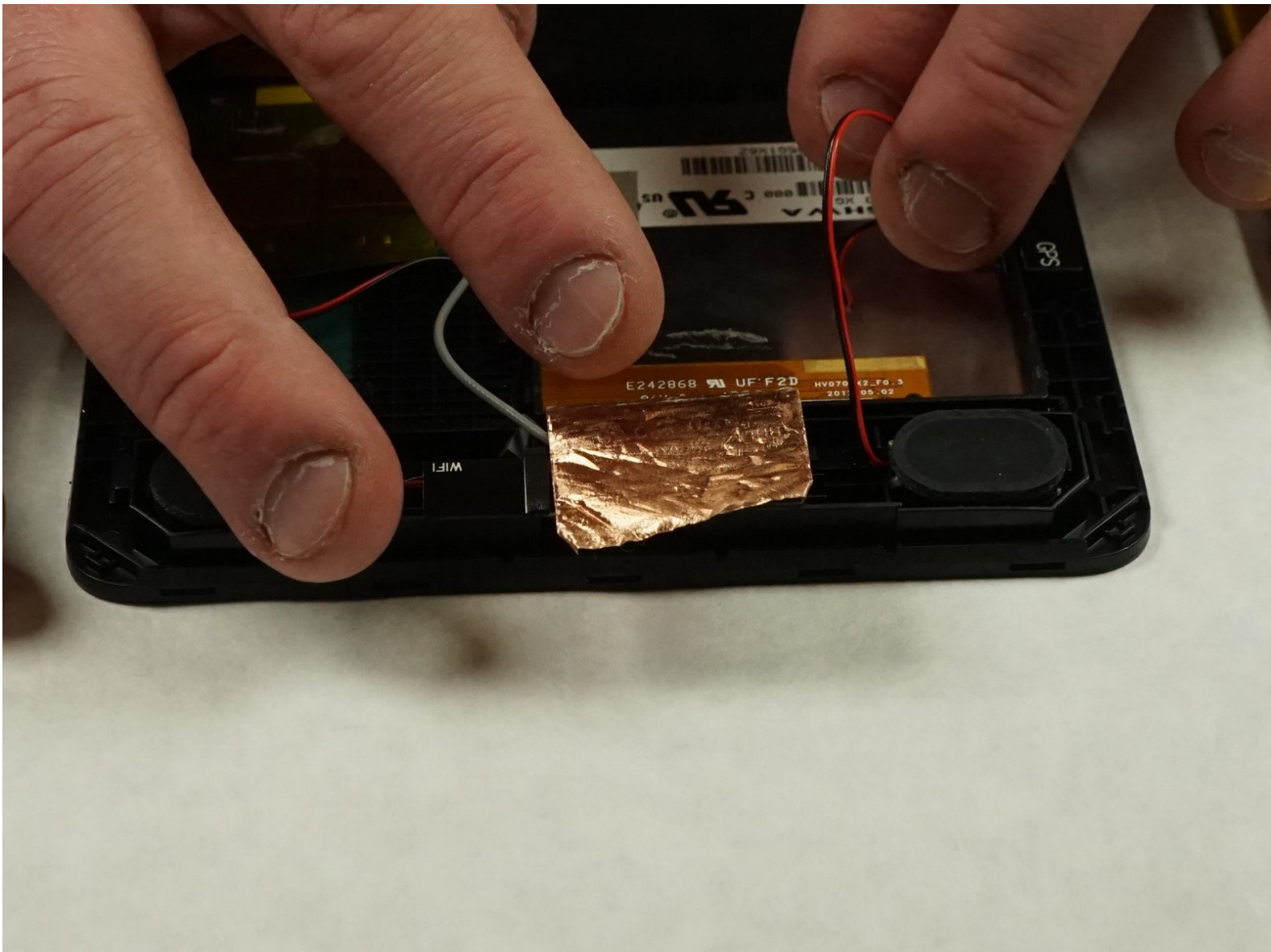




Hisense Sero 7 Pro Speakers Replacement

This guide will assist the user in replacing the speakers in the Hisense Sero 7 Pro tablet.

Written By: Logan Phillips



INTRODUCTION

Replacing the speakers is simple enough. All that is required is a plastic pry tool and a few minutes of time. It is recommended to perform this procedure in a well-lit area, as there is not much contrast between many of the components on this device.






TOOLS:

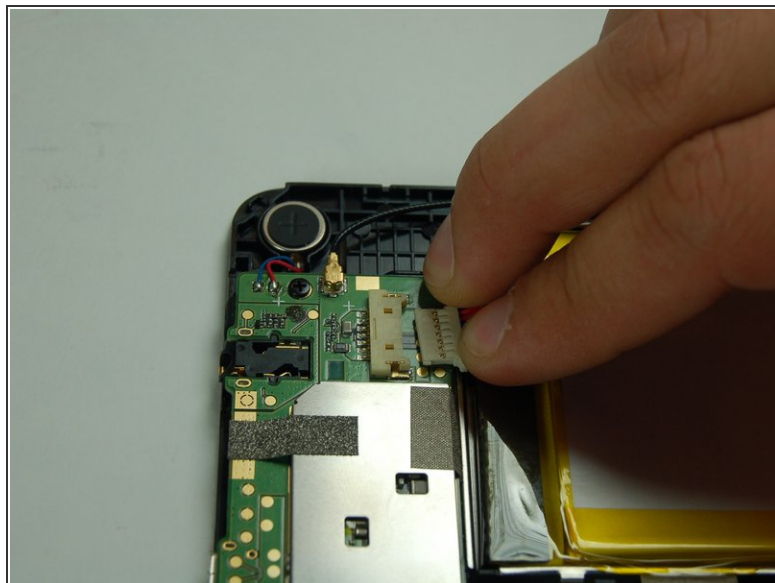
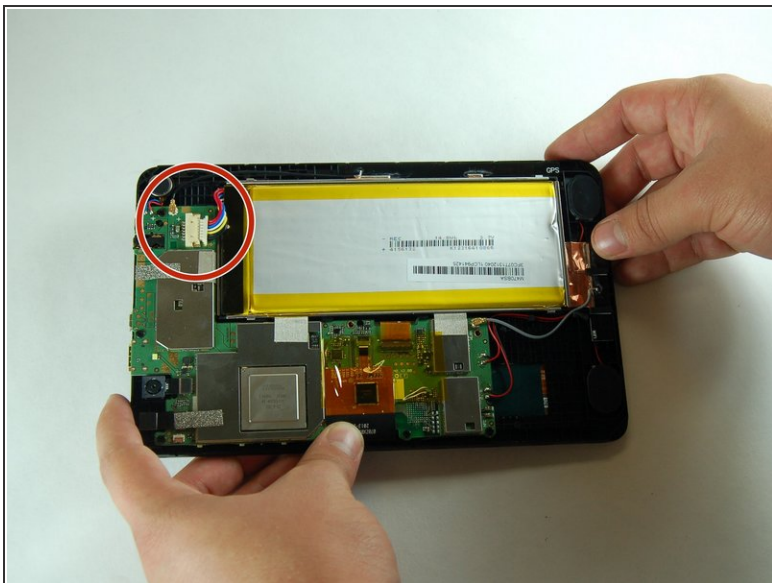
- [iFixit Opening Tools](#) (1)
 - [Tweezers](#) (1)
-

Step 1 — Battery



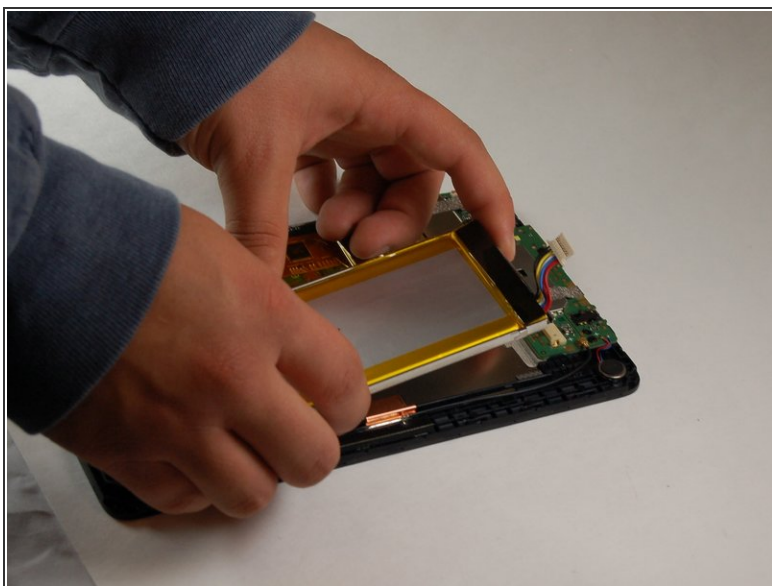
-  Turn tablet off before disassembling it.
-  Use caution when handling device if screen is cracked.
 - Using a plastic opening tool, pry open the back cover from the tablet.
-  An extra set of hands may be required.

Step 2



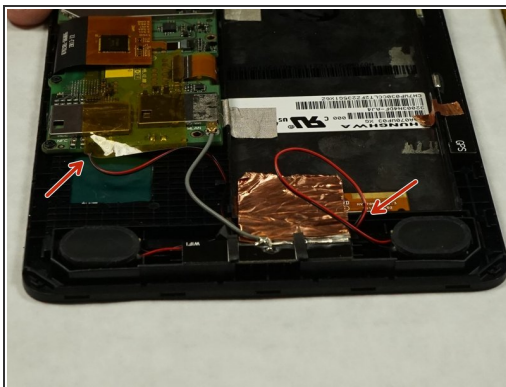
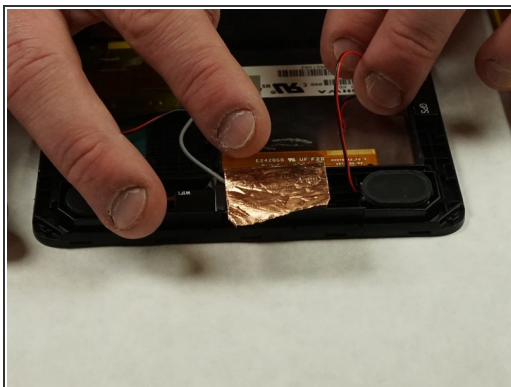
- Use a spudger to disconnect the battery from the motherboard.

Step 3



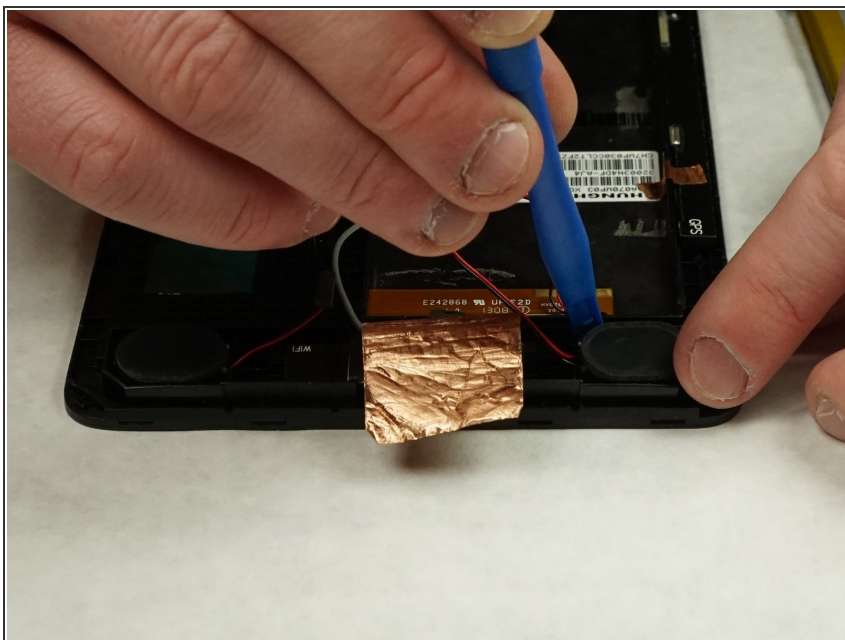
- Using a plastic opening tool, carefully place under one corner of the battery.
- Move around edges of the battery to lift it off of the tablet.
- Remove battery from tablet.

Step 4 — Speakers



- Peel back the film holding the speaker wire in place
- Detach both wire connectors

Step 5



- Using a plastic opening tool, carefully place under one corner of each speaker
- Remove both speakers

To reassemble your device, follow these instructions in reverse order.