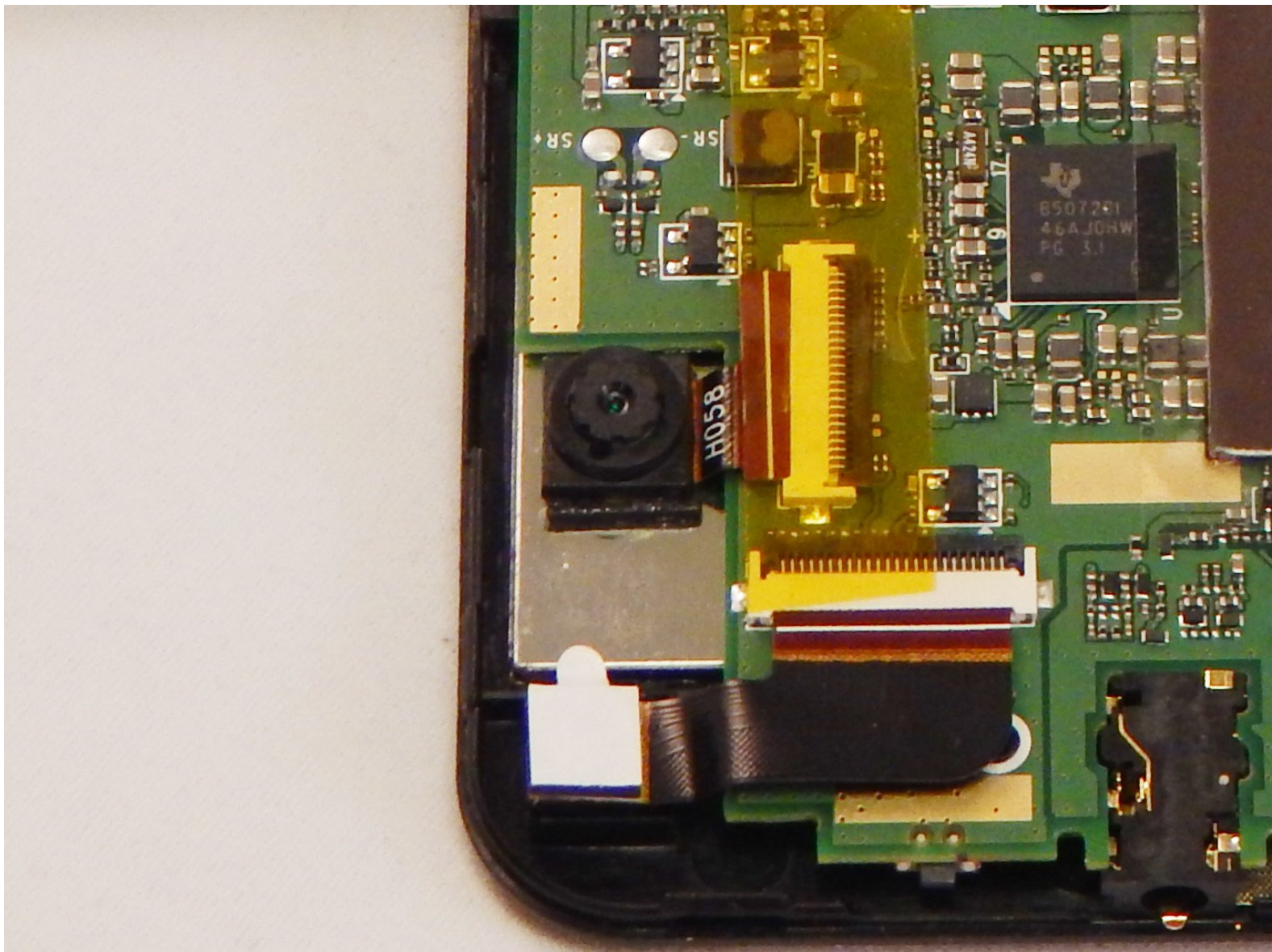




# Apex TM772 Rear Camera Replacement

Instructions on how to replace the camera on the Apex TM772.

Written By: Doran Van Bommel



---

## INTRODUCTION

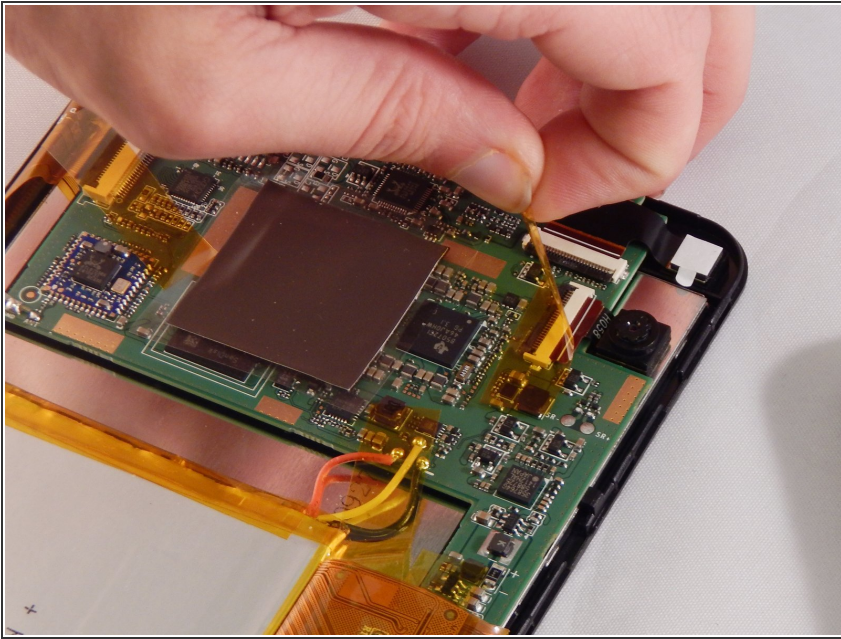
Instructions on how to replace the camera on the Apex TM772.



### TOOLS:

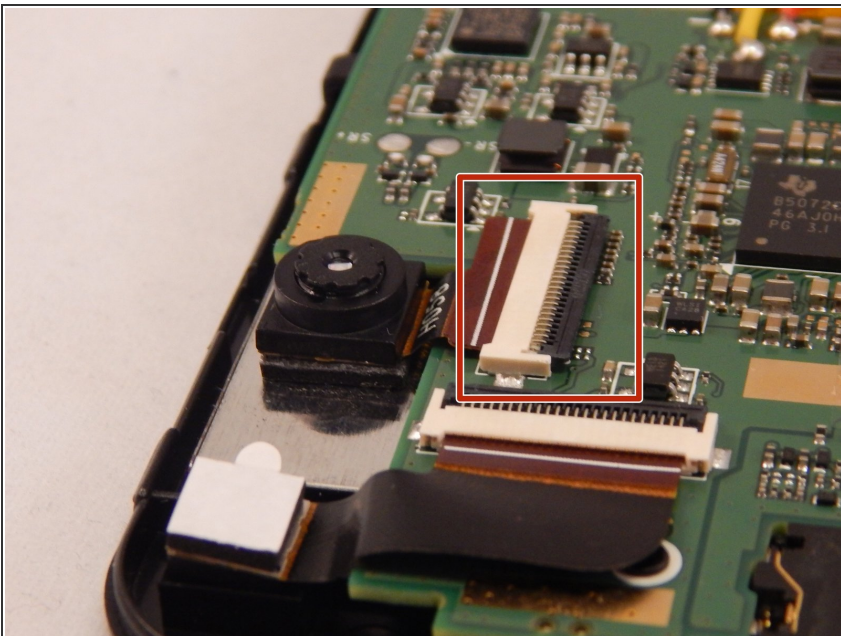
- [Tweezers](#) (1)
-

## Step 1 — Rear Camera



- i The rear facing camera is located at the top right just below the front facing camera as looking inside the device.
- With tweezers or your fingers remove the tape covering the camera's pin connector.

## Step 2



- With tweezers, flip the black latch to open the pin connector and remove the cable.

## Step 3



- The camera is adhered to the device with double sided foam tape. Carefully remove the camera from the tape with a metal spudger. If the tape is damaged, you'll need to replace it.
- Replace the camera with the new one and assemble the device in reverse of these instructions.

To reassemble your device, follow these instructions in reverse order.