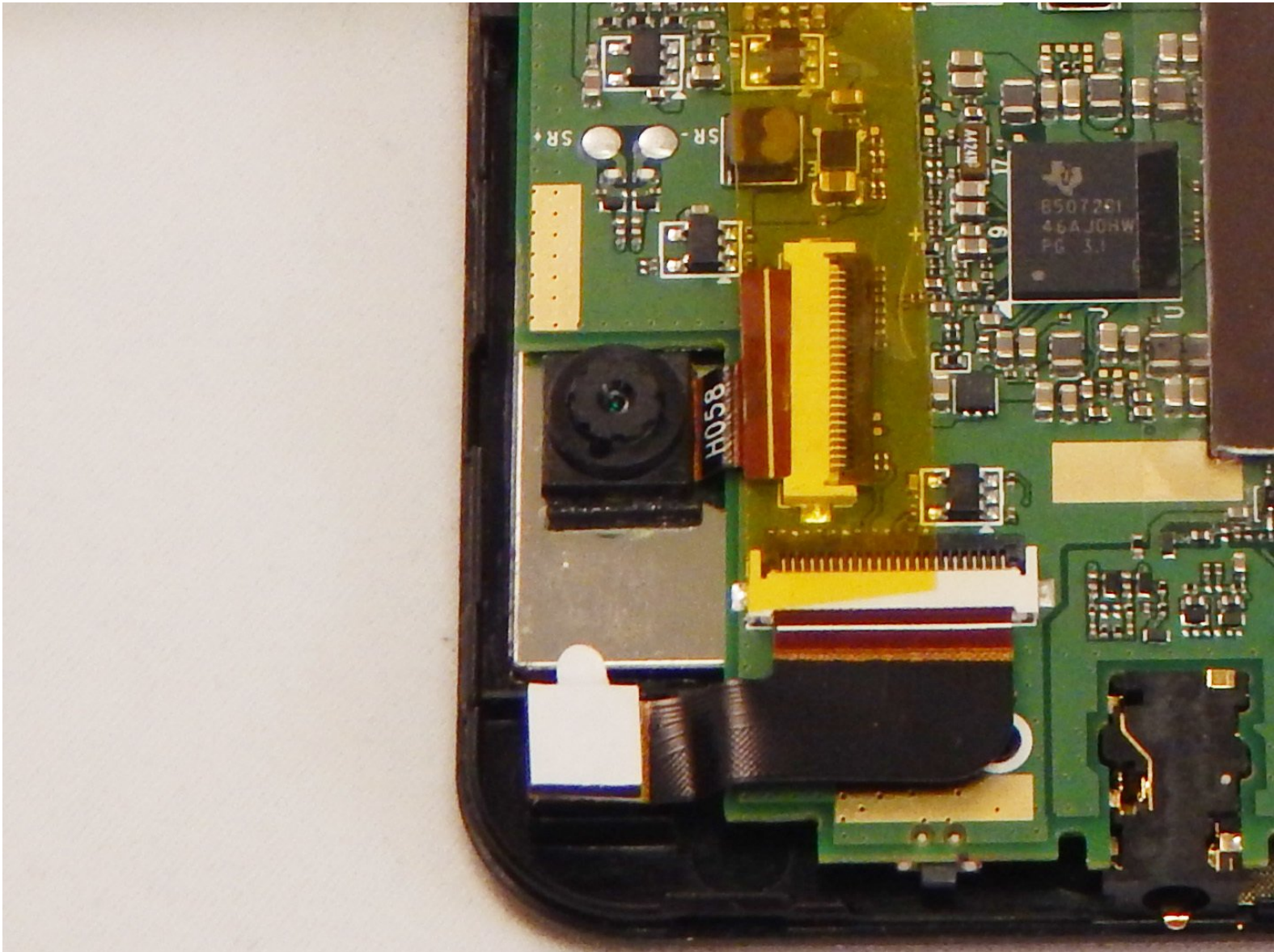




Apex TM772 Camera Replacement

Instructions for replacing a broken or damage camera component.

Written By: Doran Van Bommel



INTRODUCTION

Instructions for replacing a broken or damage camera component.



TOOLS:

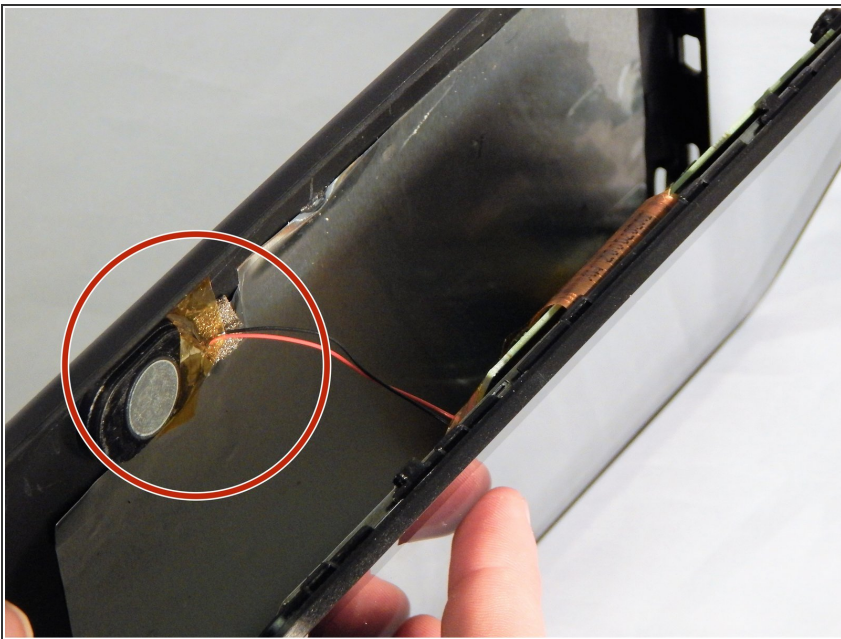
- [iFixit Opening Tools](#) (1)
 - [Tweezers](#) (1)
-

Step 1 — Casing



- Begin by inserting the plastic opening tool into the seam between the back and front of the case and carefully pry the back from the front.

Step 2



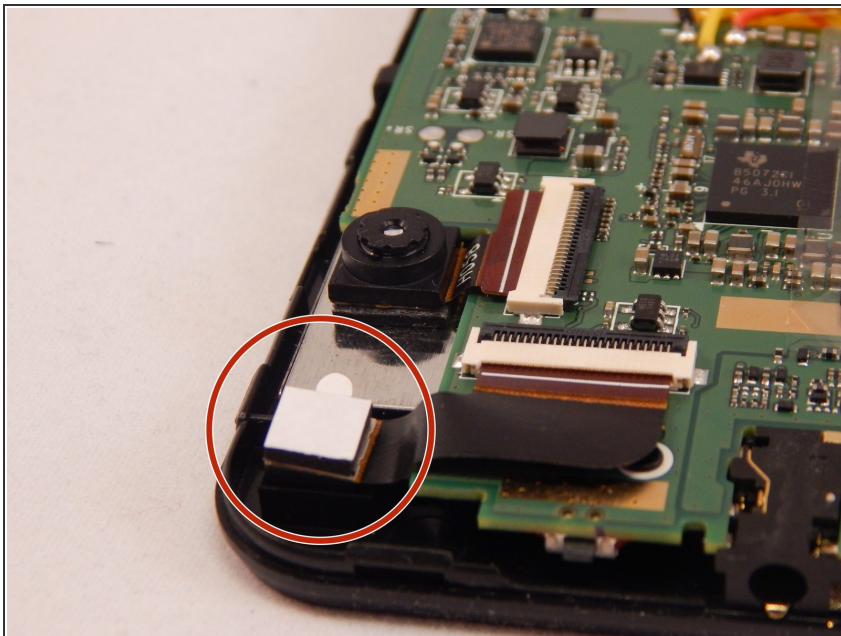
- Moving along the seam continue to pry the case apart.
- ⚠ The internal speaker is adhered to the inside of the back casing. There are two wires that connect the speaker to the circuit board and may be damaged if care is not taken. Once open the speaker may be removed from the back casing by removing the tape holding the speaker with either tweezers or your fingers.

Step 3



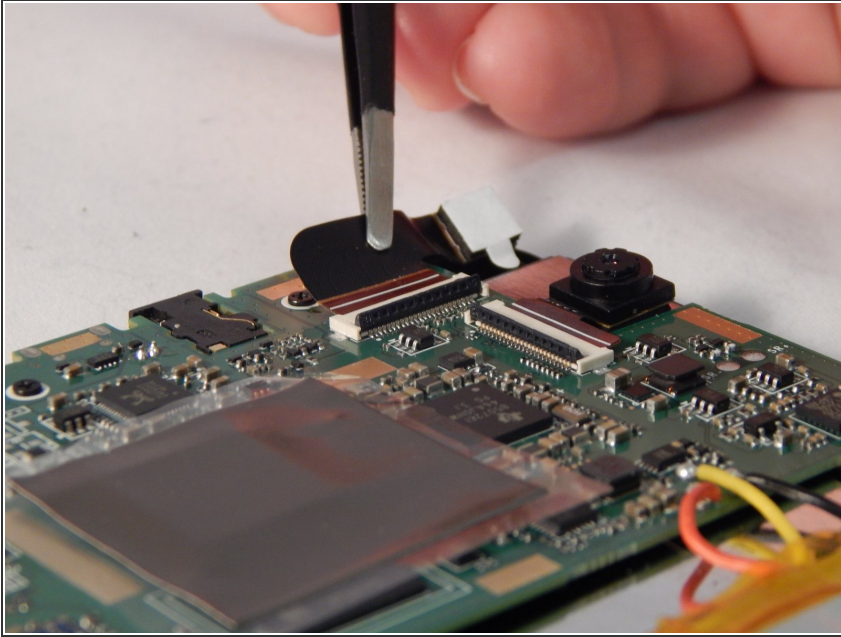
- The back panel should now be disconnected from the device. This provides access to the components of the device for repairing and replacing parts of the tablet.

Step 4 — Front Camera



- ① The front camera is located at the top right as looking inside the device.
- With tweezers or your fingers remove the tape covering the camera's pin connector.

Step 5



- With tweezers, flip the black latch to open the pin connector and remove the cable.

To reassemble your device, follow these instructions in reverse order.