



How to cool down your wificard

Written By: G 2

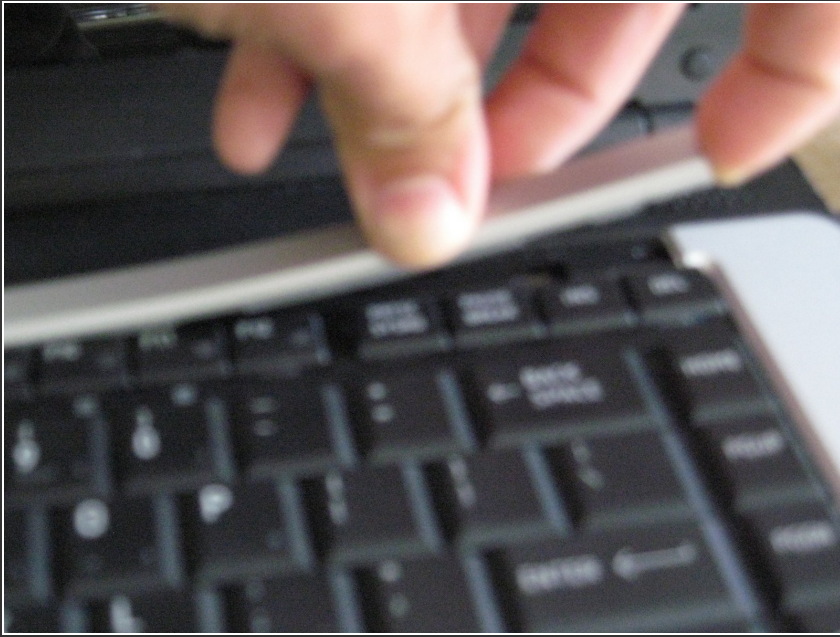




TOOLS:

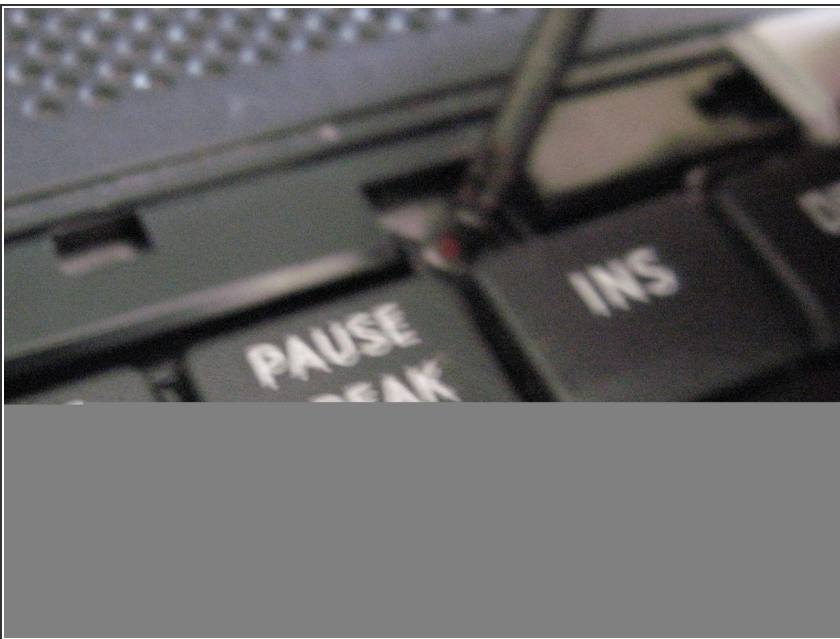
- [T6 Torx Screwdriver](#) (1)
 - [thermal compound](#) (1)
-

Step 1 — How to cool down your wificard



- Carefully take off the top

Step 2



- unscrew the keyboard

Step 3



- Pull the keyboard out

Step 4



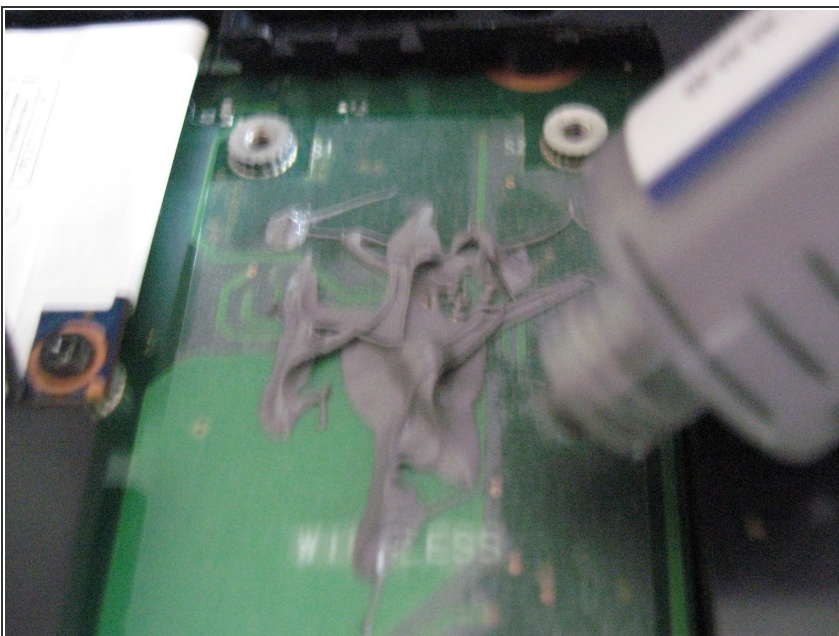
- Carefully unplug the Aux and Main off the WiFi card

Step 5



- unscrew it

Step 6



- Add a lot of **NON CONDUCTIVE** thermal compound

Step 7



- screw the card back on

To reassemble your device, follow these instructions in reverse order.