



Samsung Galaxy Tab 8.9 LCD Screen Replacement

Use this guide to replace the LCD screen on your Samsung Galaxy Tab 8.9.

Written By: Eric Bird



INTRODUCTION

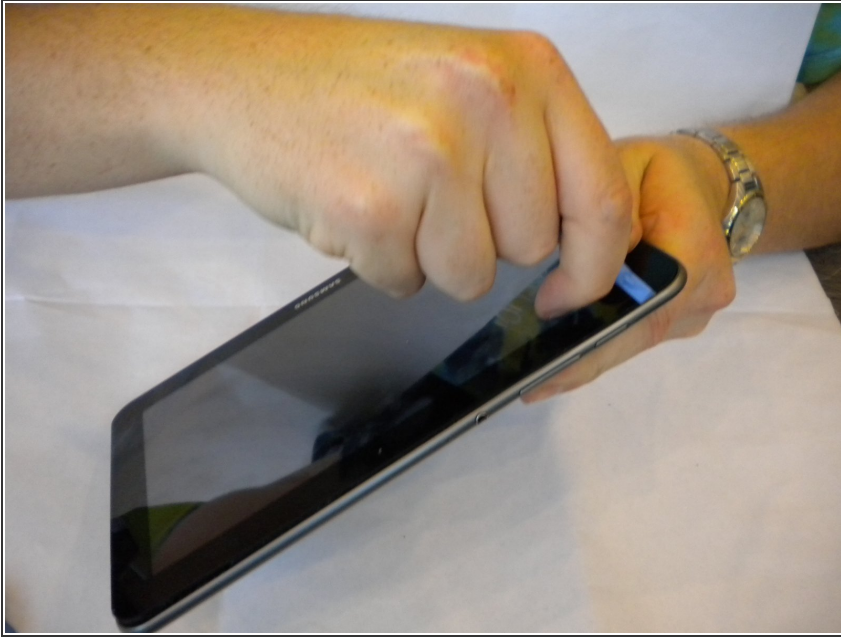
This guide will walk you through the process of replacing a broken, frozen, or unresponsive display screen on a Samsung Galaxy Tab 8.9.



TOOLS:

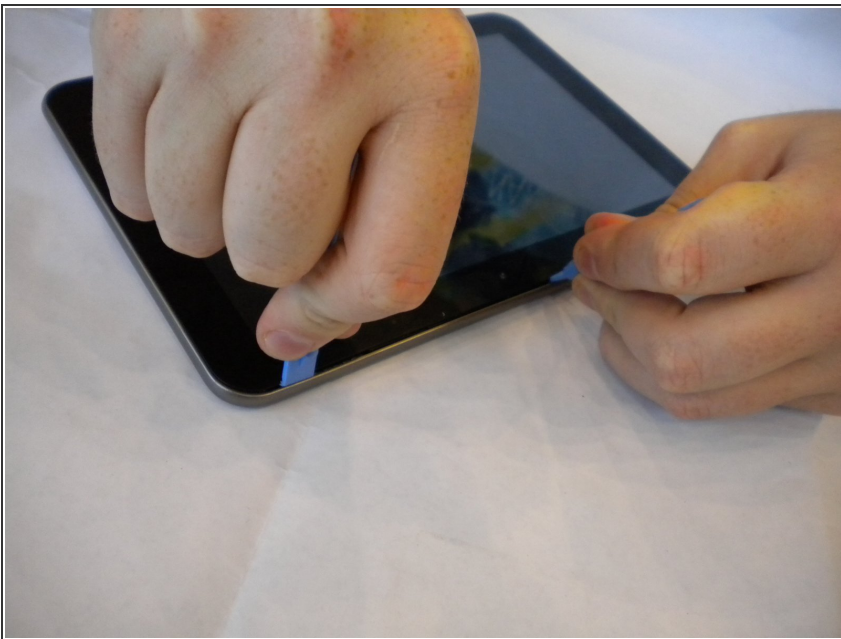
- [iFixit Opening Tools](#) (2)
-

Step 1 — Insert Opening tool



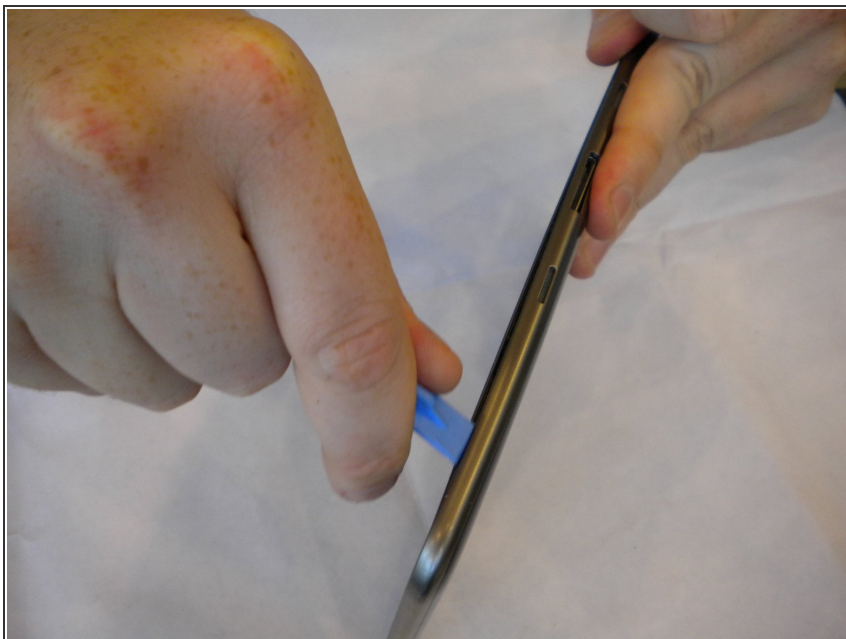
- Insert a plastic opening tool between the back cover and screen of the Samsung Galaxy Tab 8.9 (as indicated in the photograph).

Step 2 — Insert second tool



- Insert a second plastic opening tool 6 cm (~2.4 inches) away from the first tool.

Step 3



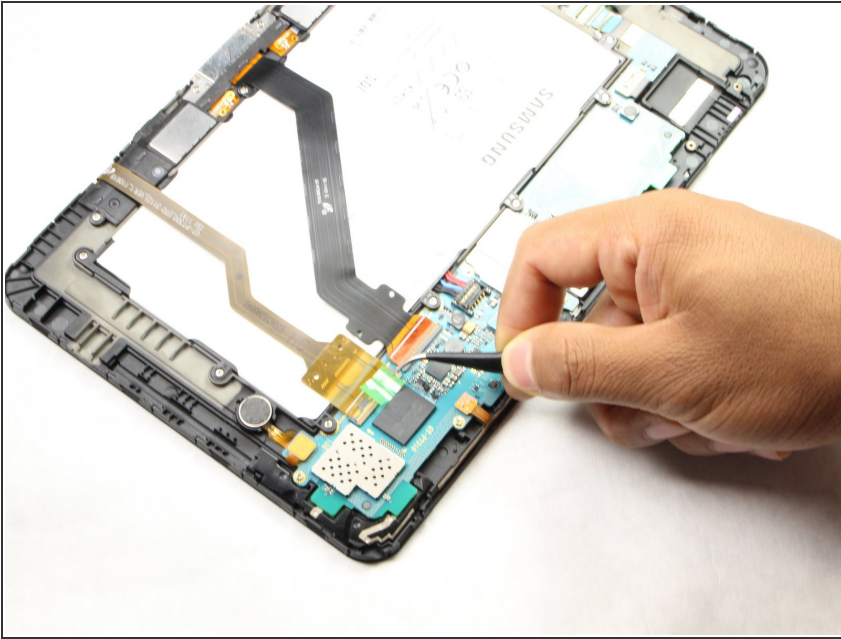
- Slide the second plastic opening tool along the edge of the device to separate the back cover.

Step 4



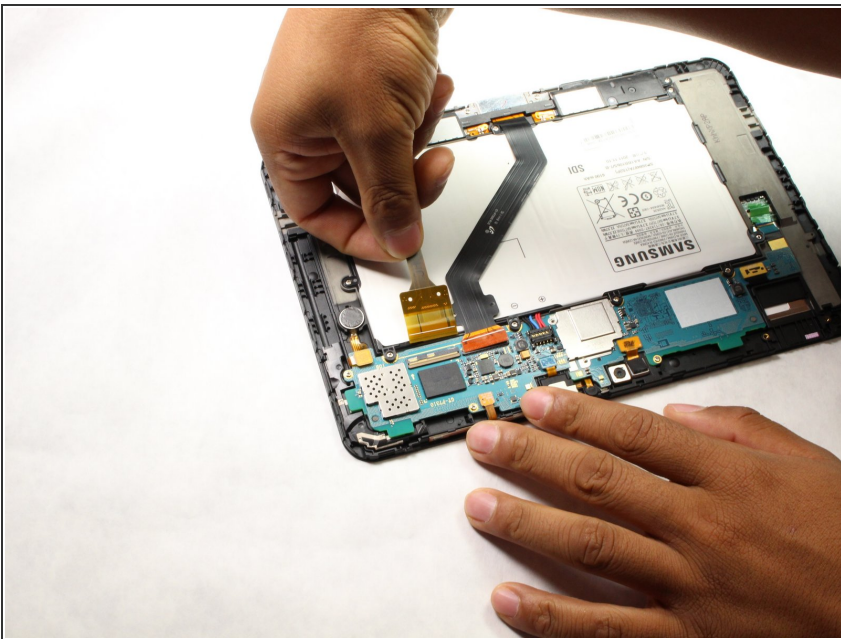
- Using your hands, remove the back cover.

Step 5 — Display



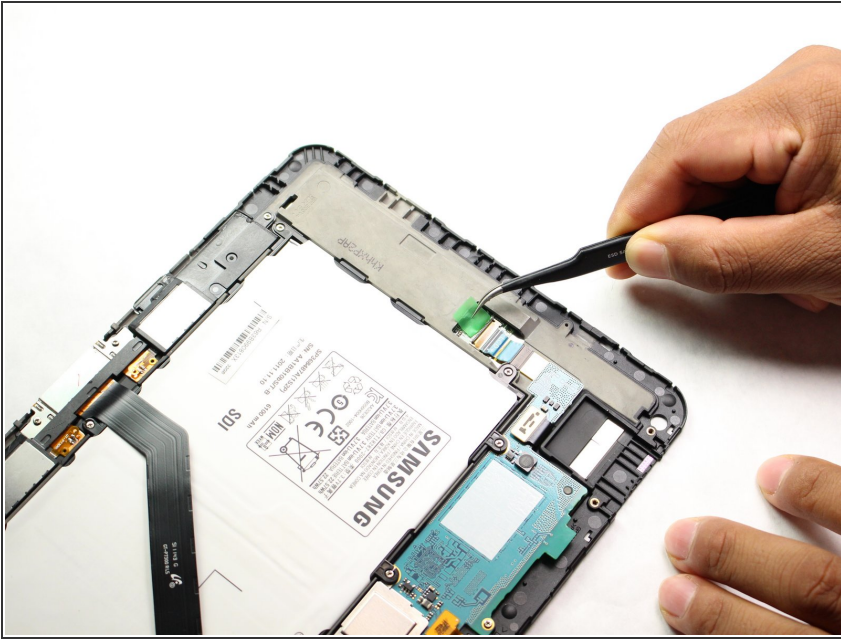
- Using tweezers, peel away the green tape located on top of the two flexible ribbon cables.

Step 6



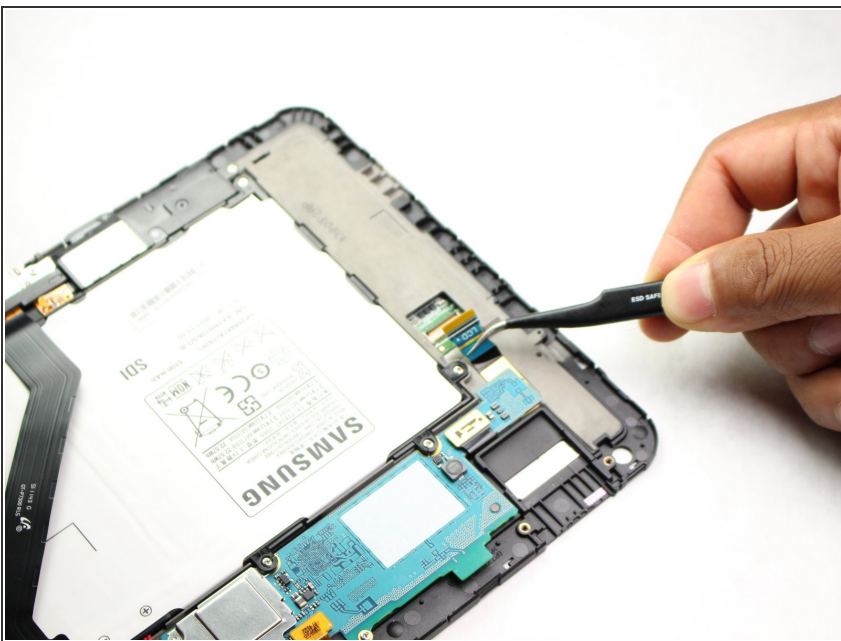
- Slide out the yellow flexible ribbon cable to disconnect it from the motherboard.

Step 7



- Remove green tape from lcd connector.

Step 8




- Pull lcd cable out of connector.

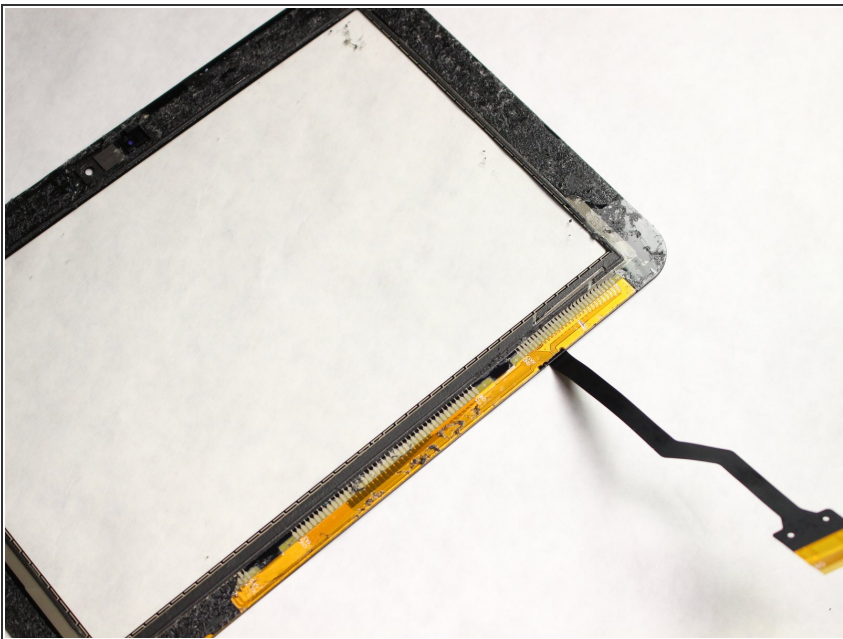
Step 9



- Slide metal tool around perimeter to release glue.

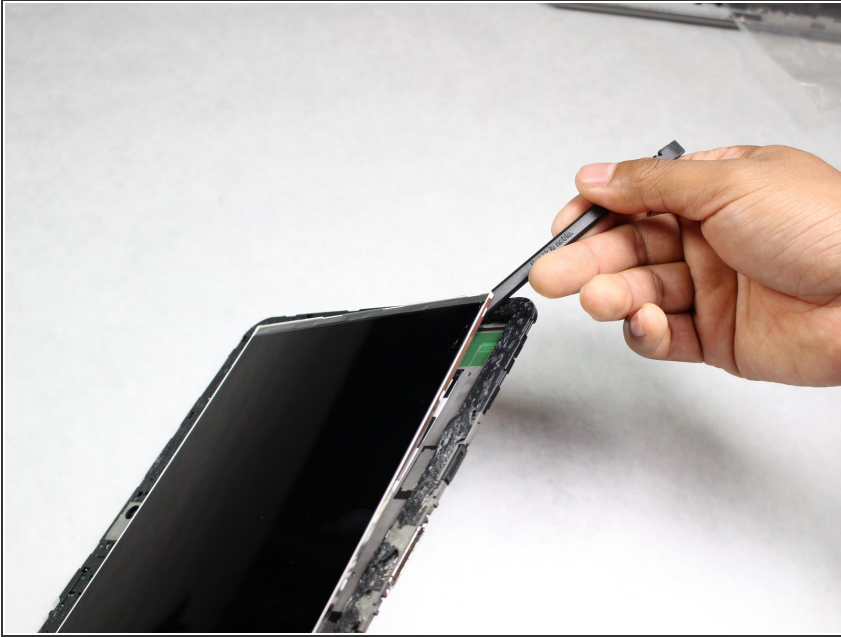
 Be careful not to damage the yellow ribbon cable.

Step 10



- Pull glass cover from main frame.

Step 11



- Pry screen from housing.

To reassemble your device, follow these instructions in reverse order.