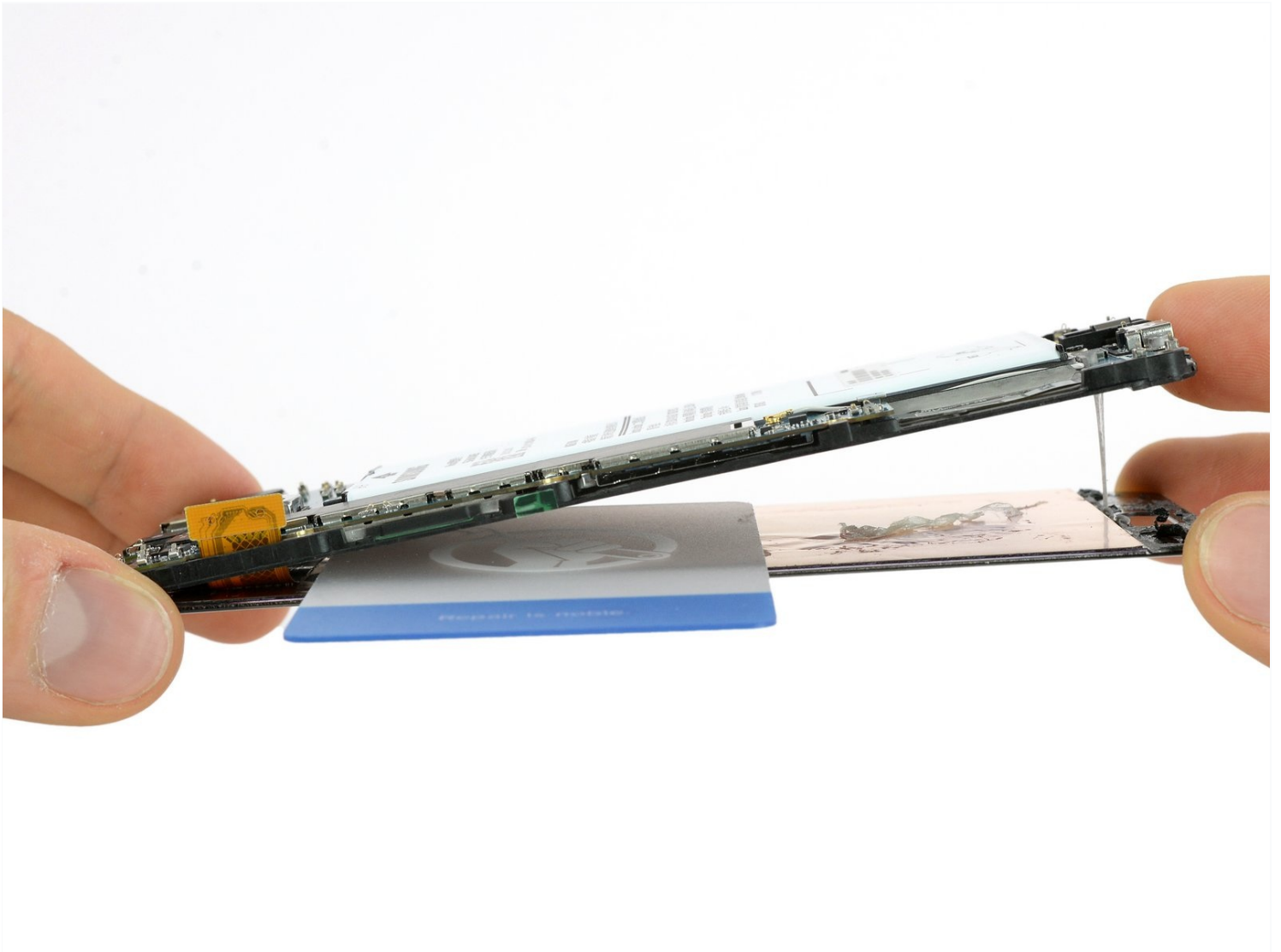




Samsung Galaxy A5 (2016) Display Replacement

Use this guide to replace a broken display or...

Written By: Tobias Isakeit



INTRODUCTION

Use this guide to replace a broken display or cracked glass of your Samsung Galaxy A5.

TOOLS:

[iOpener](#) (1)
[iFixit Opening Picks \(Set of 6\)](#) (1)
[Plastic Cards](#) (1)
[Jimmy](#) (1)
[Phillips #00 Screwdriver](#) (1)
[SIM Card Eject Tool](#) (1)

PARTS:

[Galaxy A5 \(2016\) Screen and Digitizer](#) (1)
[Tesa 61395 Double-Sided Tape](#) (1)

Step 1 — Back Cover



 Start by switching off your phone.

- Take an [iOpener](#) to heat up and soften the glue behind the back cover.
- With a suction handle lift the back cover to insert an opening pick.

Step 2



- Slide the pick up to the middle to separate the back cover from the frame.
- Insert a second opening pick and move around the right corner along the bottom and around the left corner.

Step 3



- Take another opening pick and continue towards the top corner.
- Here you want to use one more pick for the last part at the top.

Step 4



- Insert a [plastic card](#) at the bottom and slide it underneath the back cover.

Step 5



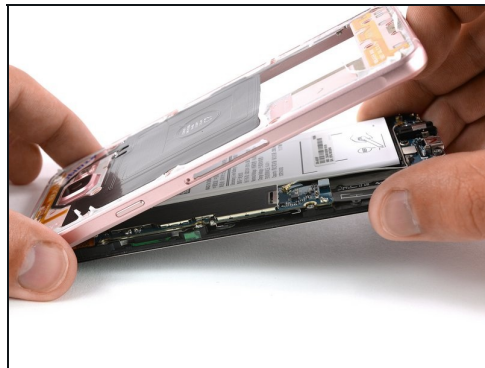
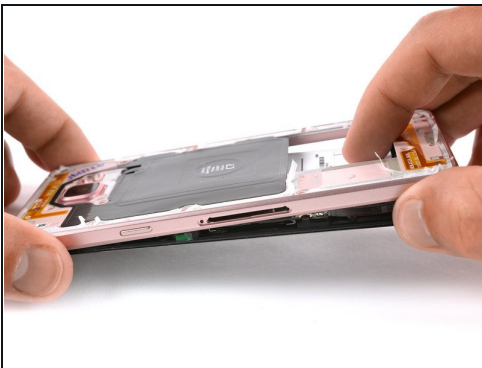
- [Heat up the back cover](#) once again so you can slide the plastic card towards the top.
⚠ Always take a peek underneath the back cover to not damage any parts like the NFC antenna.
- Move the plastic card until you reach the camera bump. Now slowly lift up the back cover and finally remove it.
- ☑ Be sure to remove any residue from the glue and apply new adhesive when reassembling.

Step 6 — Display



- Remove the SIM card tray.
- Remove the 17 Phillips #00 screws on the midframe.

Step 7



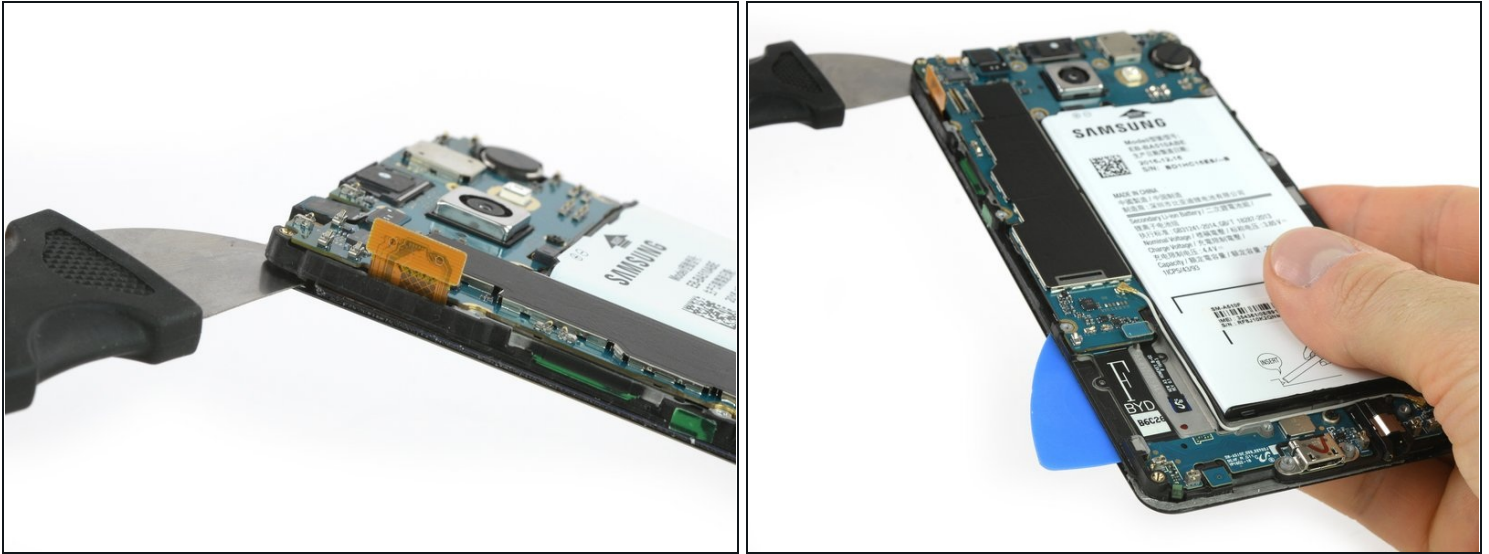
- Push the exposed part of the battery away from the midframe to separate the components.
- You may need the IMEI sticker on your old battery to identify your phone in the future, be sure to transfer it to the replacement battery.

Step 8



- With a flat end of a spudger disconnect the display connector.
- [Reheat the iOpener](#) and use it to loosen the adhesive under the display.

Step 9



- Use a Jimmy to get between the frame and the front panel.
- Pry up the display unit just a bit so you can put an opening pick behind the display.
⚠ You just want to insert the tip of the opening pick where the display cable is.
- Slide down the side to separate the glue. At the bottom you can insert the opening pick further to keep the adhesive from resealing.

Step 10



- Repeat the same procedure on the other side.
- Here you can insert the opening pick as far as half of an inch to get the glue off behind the battery.
- Slide down to where the display ends.

Step 11



- Now slide along the bottom to get the glue off.

⚠ Be careful, there are two touch buttons on each side behind the front panel. In the middle only go as deep as where the home button begins.

Step 12



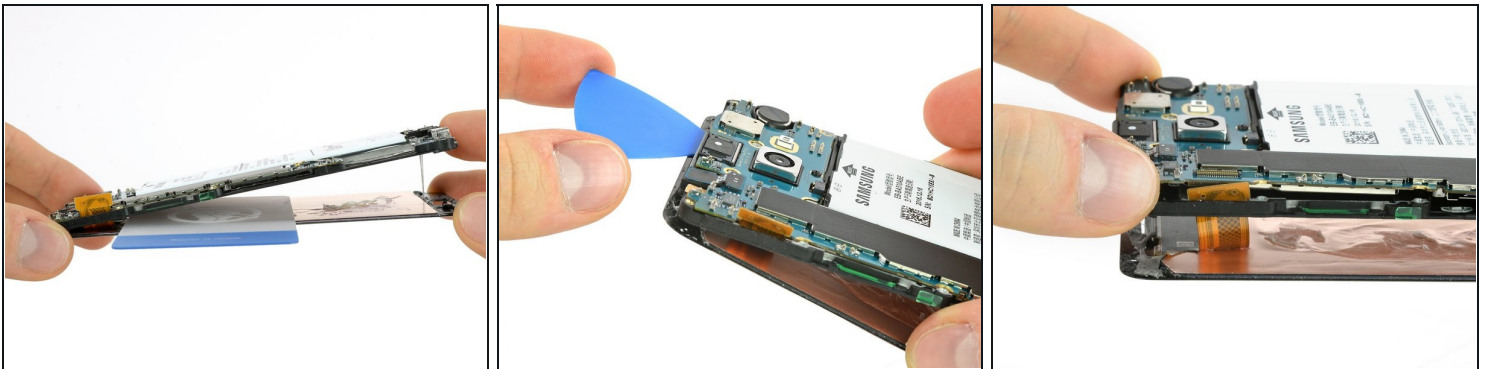
- [Re-heat](#) the display unit for the next few steps.

Step 13



- On the left hand side (where the motherboard sits) replace the opening pick with a [plastic card](#) to get to the glue behind the battery.
- Continue separating the adhesive until you reach the display cable.

Step 14



- Separate the display from the display frame and cut the remaining glue at the top with an opening pick.
- Carefully slide the display cable out of the slot in the display frame.

Step 15



- ★ Before you start reassembling plug the new display to the motherboard and perform a short test by powering on your phone. See if the display lights up and the touch works properly.
- ⓘ Remove any adhesive from the display and rear glass and reapply as necessary.

To reassemble your device, follow these instructions in reverse order.