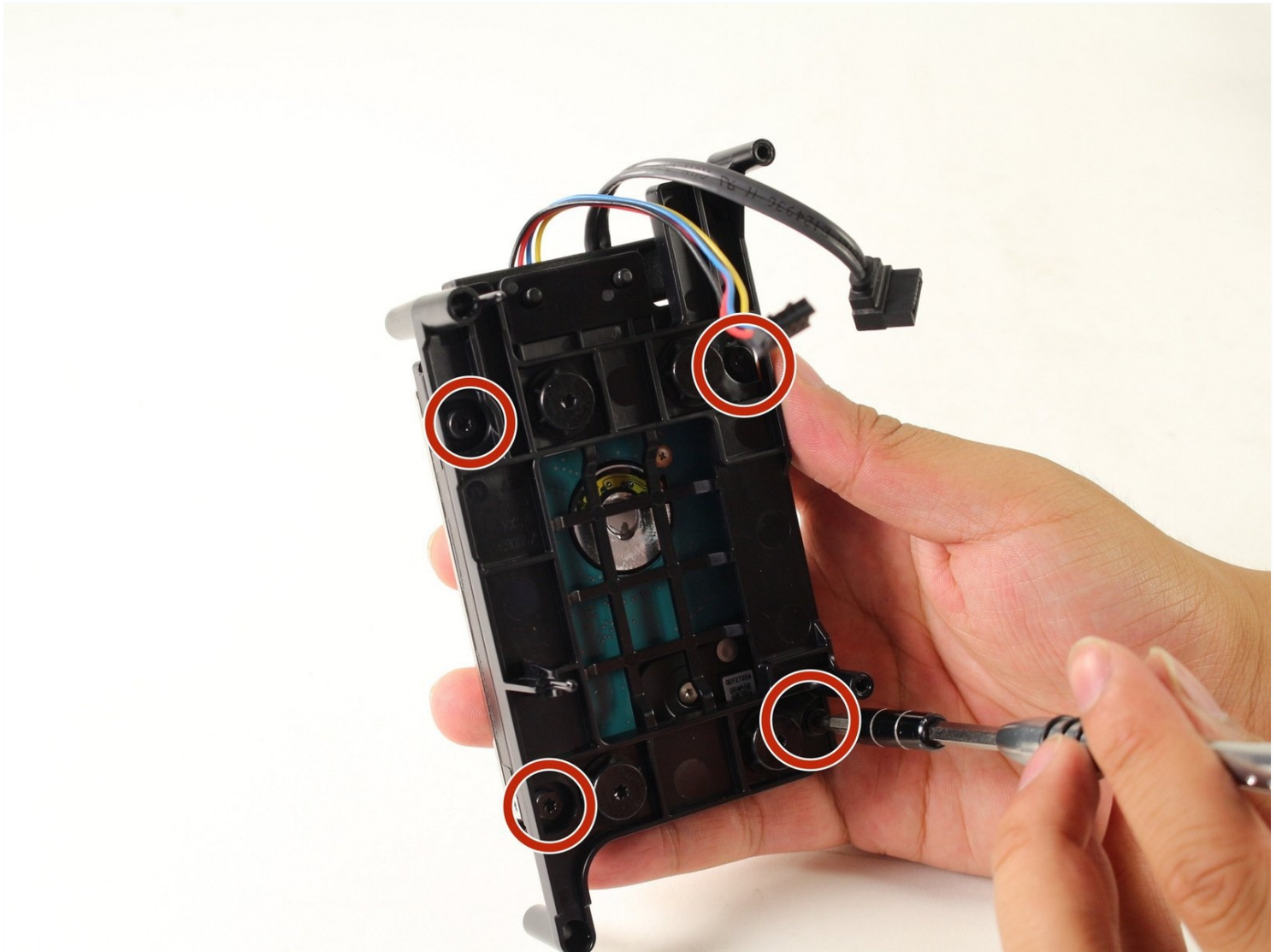




Xbox One S Hard Drive Replacement

If you want to replace the hard drive with one...

Written By: Andrew



INTRODUCTION

If you want to replace the hard drive with one that has a larger capacity, this guide will teach you how to replace the hard drive step by step.



TOOLS:

[iFixit Opening Tool](#) (1)
[TR10 Torx Security Screwdriver](#) (1)



PARTS:

[Xbox One S Top Case](#) (1)
[Xbox One S Bottom Case Panel](#) (1)
[Xbox One S Chassis and Rear Panel](#) (1)
[Xbox One S HDD](#) (1)
[Xbox One S Hard Drive SATA Cable](#) (1)

Step 1 — Case



- Flip the Xbox One S so that the bottom of the case is facing upward.

Step 2



- Begin by working at the case on the rear where the warranty sticker is located. Insert the plastic opening tool into the gap between the bottom of the case and the grated top side. Then find the clips in between that hold the case in place. Use the opening tool to pop the clips out. The best method is to pry the black case away from the bottom.

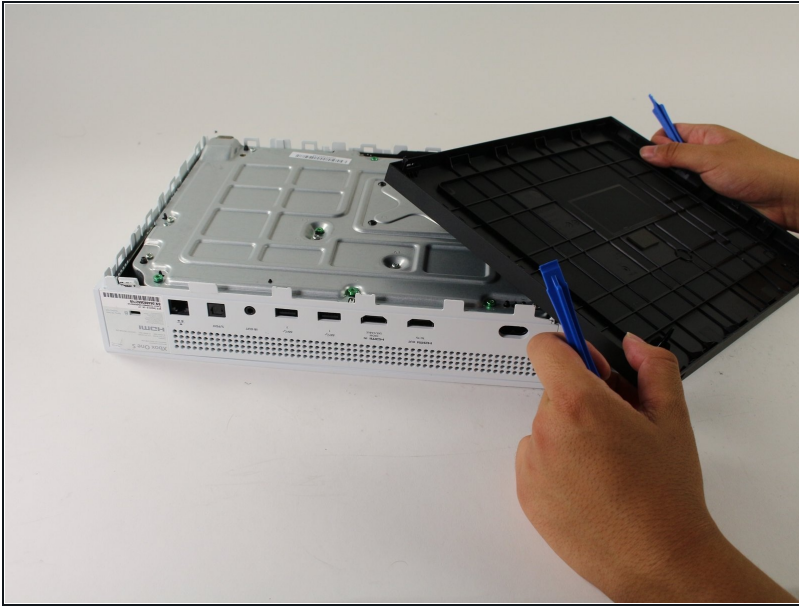
- Use the opening tool to pop the clips out. The best method is to pry the black case away from the bottom.

- ① You will hear clicking sounds when you are prying the case open. It may be fairly difficult to remove the bottom.

⚠ It's possible that the clips may break when you remove the bottom from the case.

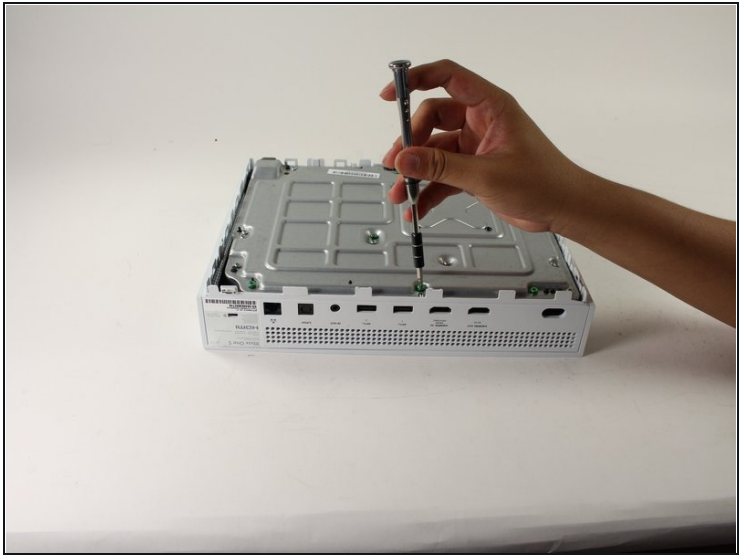
- ① We recommend starting at the back where the warranty sticker is located. Pry along the rear edge until all clips are free. From there do each side. When three sides are free start at the end of the front opposite the sync button. Be cautious and take your time and all should separate without any damage.

Step 3



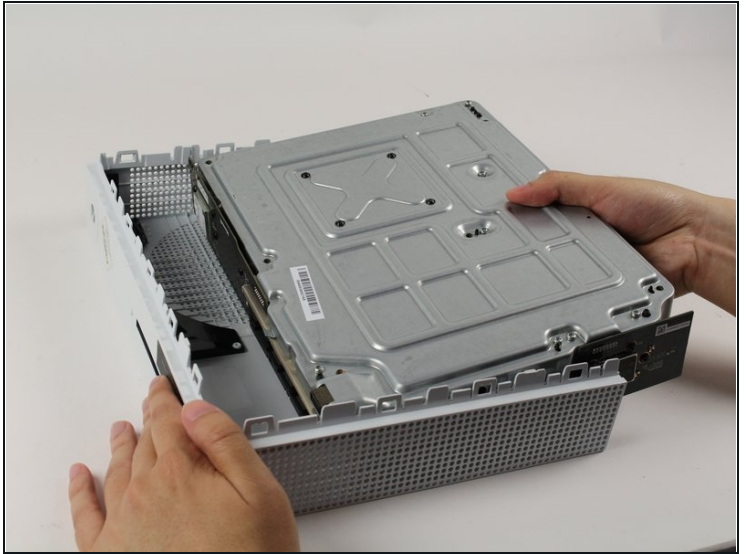
- Once all of the clips are opened, remove the bottom part of the case.

Step 4



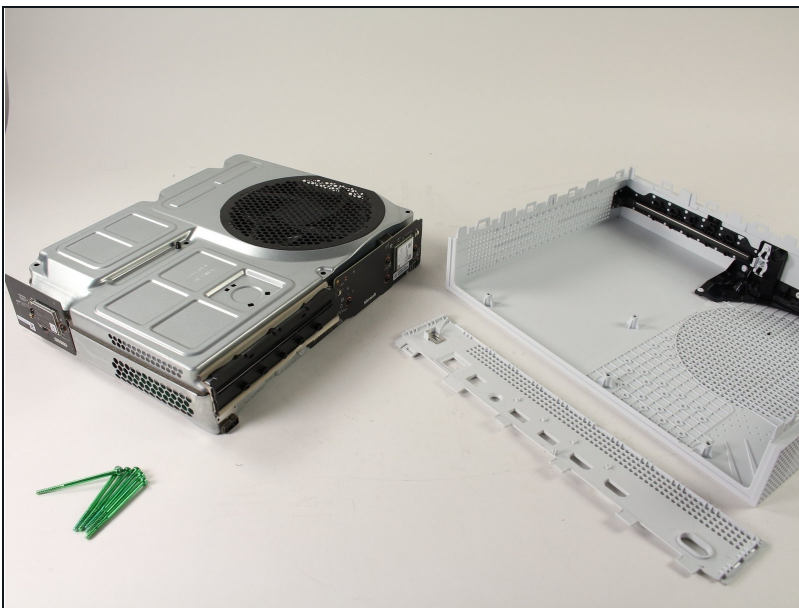
- Use a T10 Torx screwdriver to remove the six green 50 mm long screws from the metal case labeled F1 through F6.

Step 5



- Gently separate the interior case from the white exterior case using the appropriate method.
- Pry the white plastic sides outwards at the rear to separate from the plastic I/O shield

Step 6 — Interior Case Top Panel



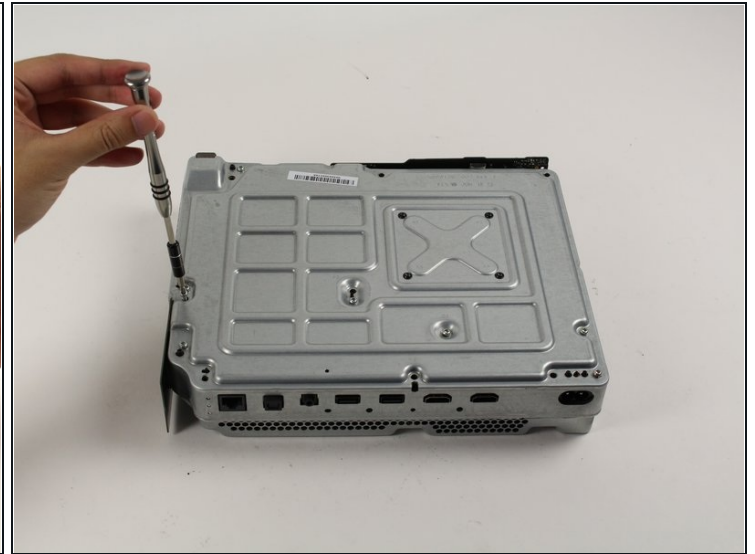
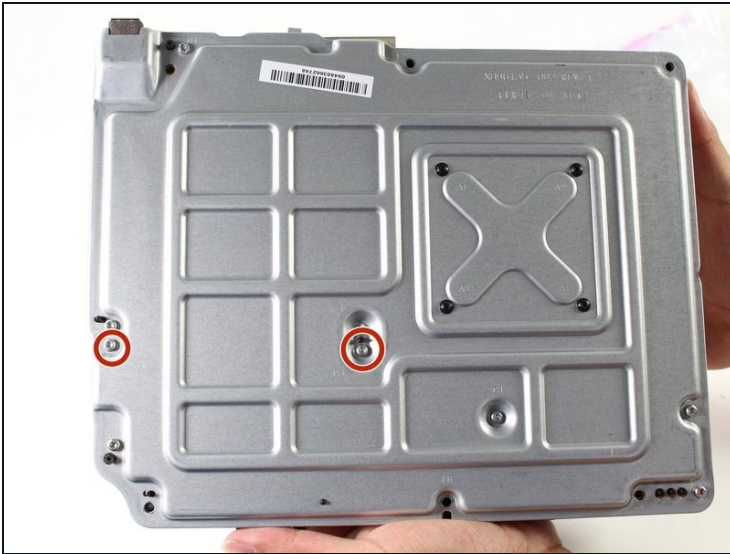
- Flip the interior case so it is fan side upward.

Step 7



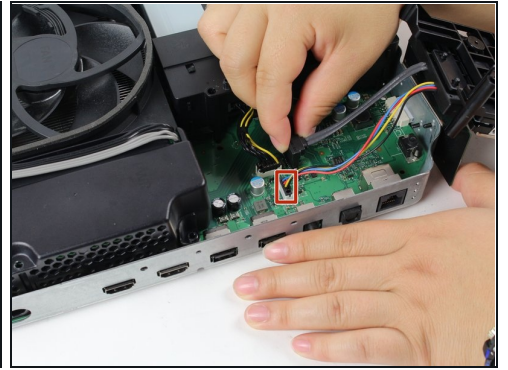
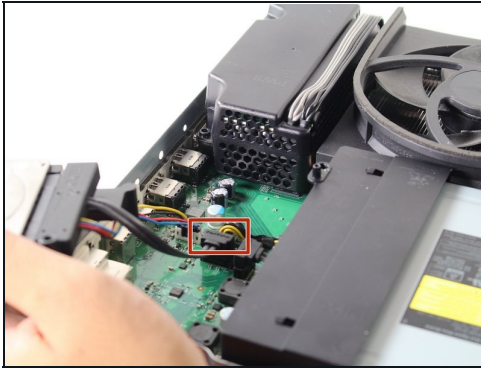
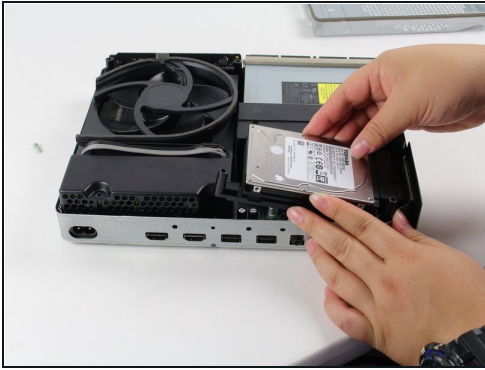
- To access the hardware within the casing, you can pop and lift the top panel of the casing. It should come right off.

Step 8 — Hard Drive Assembly



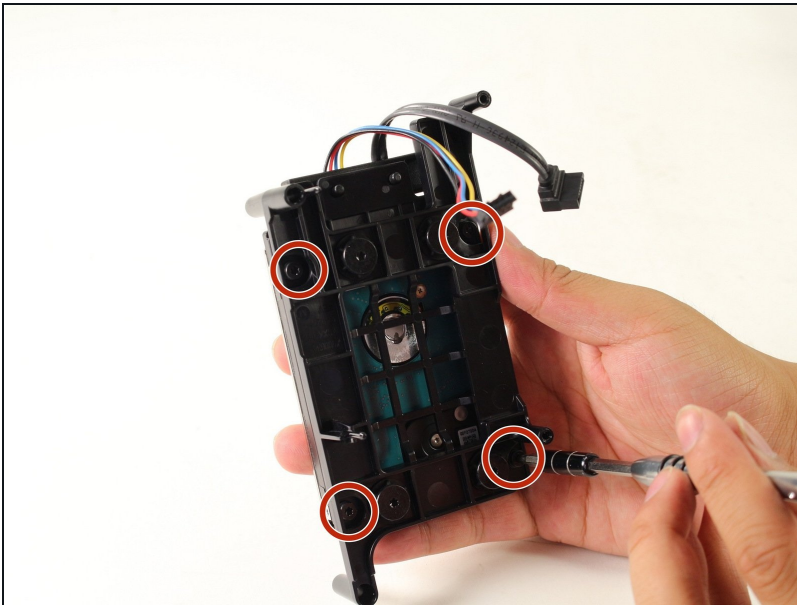
- To replace the hard drive, flip over the console and remove the two 10 mm T-10 Torx screws, C3 and C5, from the backside of the Xbox One S.
 - ① Some models may require C4 and C5.
 - ① This will allow the plastic casing surrounding the hard drive to become detached from the rest of the console.

Step 9



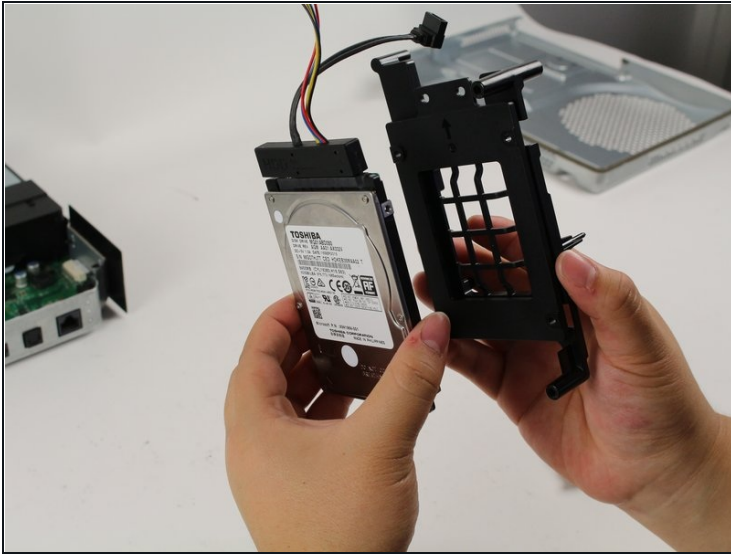
- Gently disconnect the hard drive from the motherboard (at the two plastic connector bodies).

Step 10 — Hard Drive



- Remove the four black 10mm T10 Torx screws from the black plastic mount.

Step 11



- Detach the black plastic mount and the wires from the hard drive.
- ① Now that your hard drive is removed, you can replace it and reassemble your Xbox One S following this guide in the reverse order.

To reassemble your device, follow these instructions in reverse order.