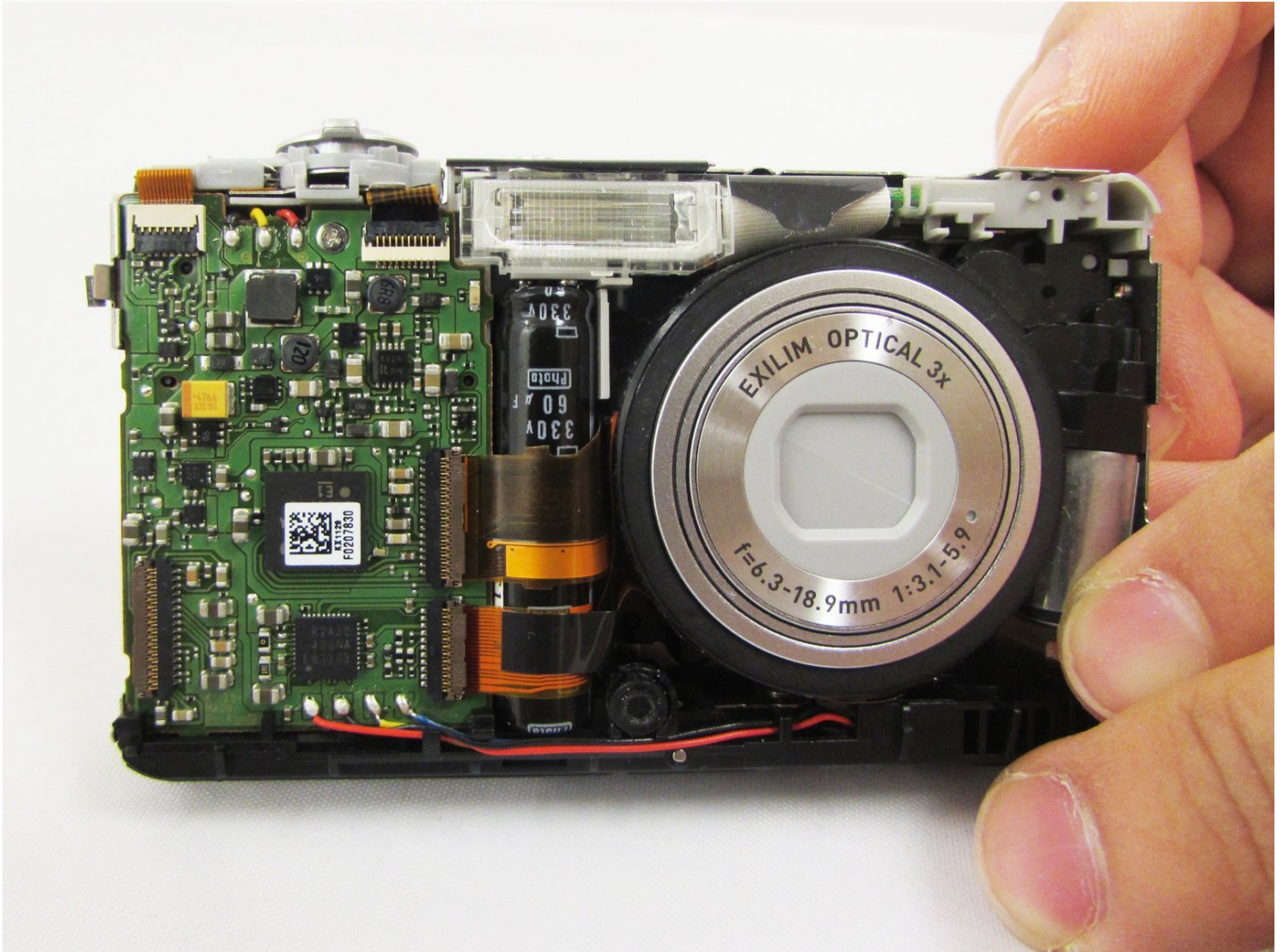




Casio Exilim EX-Z80 Lens Replacement

This guide will show you how to properly remove...

Written By: Caroline Villasenor



INTRODUCTION

This guide will show you how to properly remove and replace the Casio Exilim EX-Z80 camera lens in the case that the lens has been broken or scratched. It will require the use of the Casio Exilim EX-Z80 Back and Front Cover Replacement Guide.

TOOLS:

[Metal Spudger](#) (1)

[Spudger](#) (1)

[Phillips #000 Screwdriver](#) (1)

[iFixit Opening Tool](#) (1)

[Heavy-Duty Spudger](#) (1)

Step 1 — Back and Front Cover



- Remove the four 3 mm black screws from the bottom of the camera using a Phillips #000 screwdriver.
- Open the battery compartment with your thumb or index finger.
- Remove the single 2 mm silver screw that is now exposed using a Phillips #000 screwdriver.

Step 2



- Open the USB port tab.
- Remove the single 2 mm silver screw using a Phillips #000 screwdriver.

Step 3



- Remove the two 2 mm silver screws using a Phillips #000 screwdriver.

Step 4



- Carefully remove the silver strip from left side. Open the battery cover and remove the metal strip with fingers by sliding it to the left.

Step 5



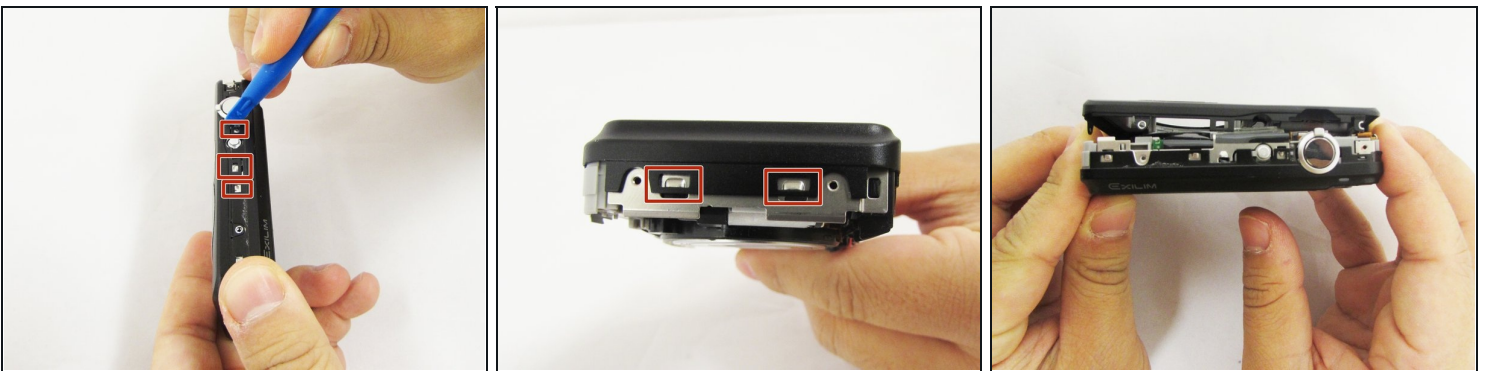
- With the metal spudger, pry out the edge of the silver strip at the bottom right side of the camera.
- Carefully remove the remaining part of the metal strip.

Step 6



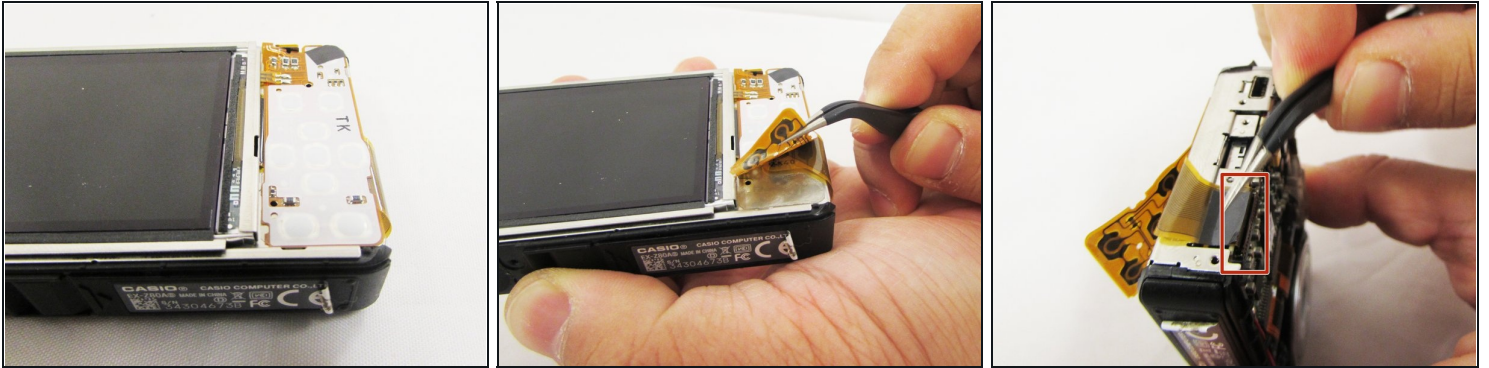
- Remove the two 2 mm silver screws from the top corners of the camera using a Phillips #000 screwdriver.
- Remove the three 2 mm screws from the left side using a Phillips #000 screwdriver.

Step 7



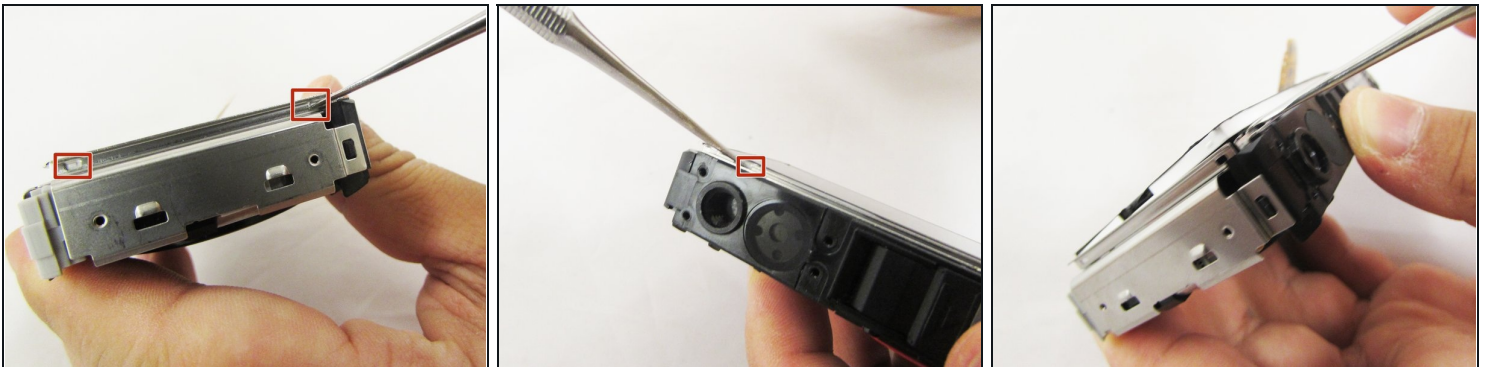
- Using a small opening tool carefully release all lock tabs at the top and on the side of the camera from their locked position.
- Using your hands, carefully separate the front and back panel from the camera.

Step 8 — LCD Screen



- Gently flip the wide button cable up from the display cable.
- Lift the brown retention flap on the display cable ZIF connector with tweezers or an ESD-safe tool.
- Carefully pull the display cable from its connector.

Step 9



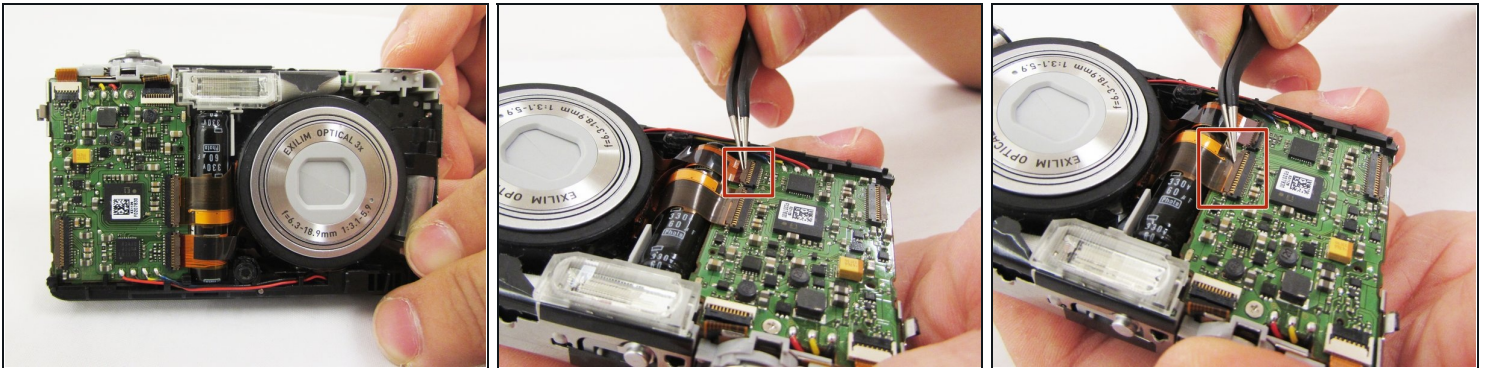
- Pry the square holes that hold the LCD screen up with a metal spudger until you see the raised tabs in the metal holes.
- Repeat the process with the holes around the four edges of the camera.
- Insert the metal spudger into the gap of the metal case and pry up the LCD screen.

Step 10



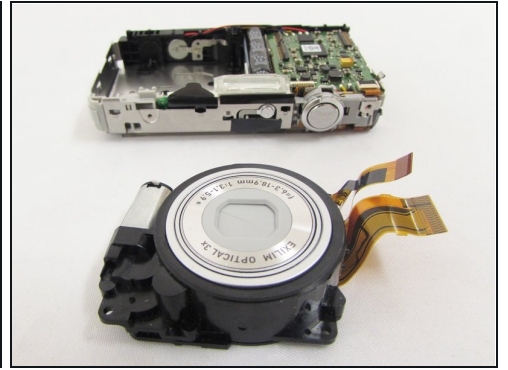
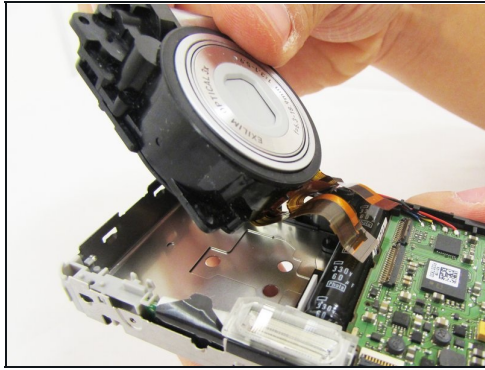
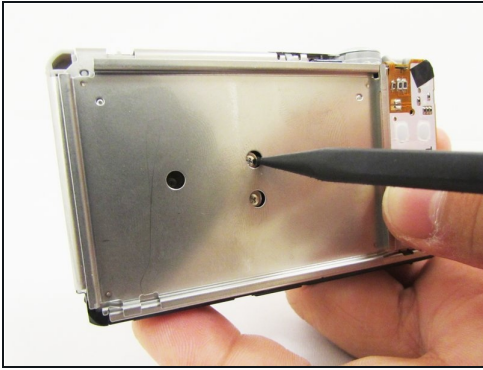
- Hold up the LCD screen in one hand and hold back the button cable with the other.
⚠ Don't let the LCD screen to fall back into the metal case and make sure the button cable does not get stuck on the display cable.
- Pull on the LCD screen until the yellow display cable is fully out of the metal case.

Step 11 — Lens



- Lift the retaining flaps on the two ZIF connectors that secure the the lens ribbon cables to the motherboard.
- Carefully pull the two ribbon cables from their sockets on the motherboard.

Step 12



- Turn the camera around and locate the holes on the metal panel.
- With a heavy duty spudger, gently poke through the holes, releasing the lens from the main portion of the camera.
- With your index finger and thumb gently pull the full lens out.

To reassemble your device, follow these instructions in reverse order.