



Casio Exilim EX-Z80 LCD Screen Replacement

This guide will describe how to replace a LCD...

Written By: Zhiliang Peng



INTRODUCTION

This guide will describe how to replace a LCD screen for Casio Exilim EX-Z80. Before doing that, users need to take out the back and front cover then, follow the steps.

TOOLS:

Metal Spudger (1)

Spudger (1)

Phillips #000 Screwdriver (1)

iFixit Opening Tool (1)

Step 1 — Back and Front Cover



- Remove the four 3 mm black screws from the bottom of the camera using a Phillips #000 screwdriver.
- Open the battery compartment with your thumb or index finger.
- Remove the single 2 mm silver screw that is now exposed using a Phillips #000 screwdriver.

Step 2



- Open the USB port tab.
- Remove the single 2 mm silver screw using a Phillips #000 screwdriver.

Step 3



- Remove the two 2 mm silver screws using a Phillips #000 screwdriver.

Step 4



- Carefully remove the silver strip from left side. Open the battery cover and remove the metal strip with fingers by sliding it to the left.

Step 5



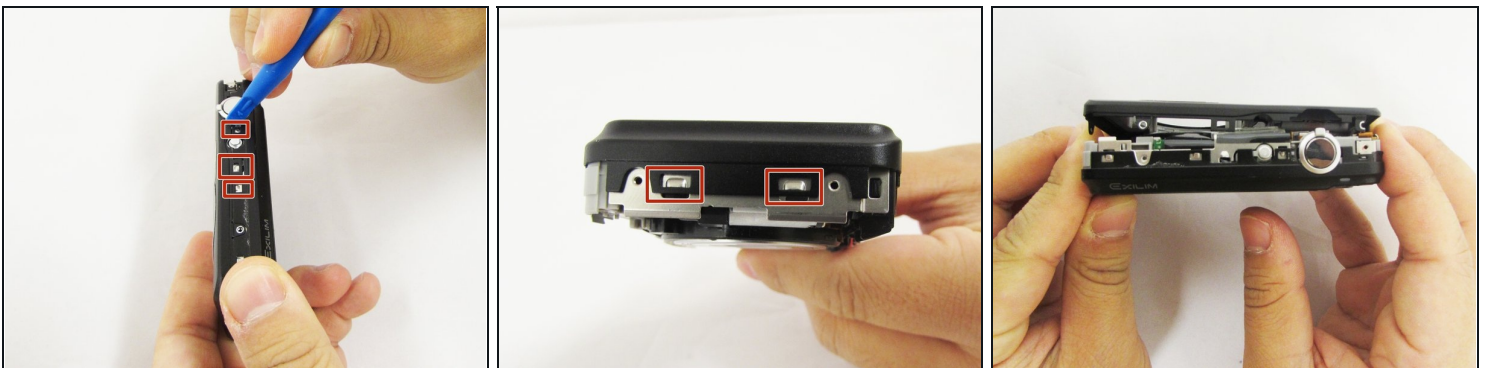
- With the metal spudger, pry out the edge of the silver strip at the bottom right side of the camera.
- Carefully remove the remaining part of the metal strip.

Step 6



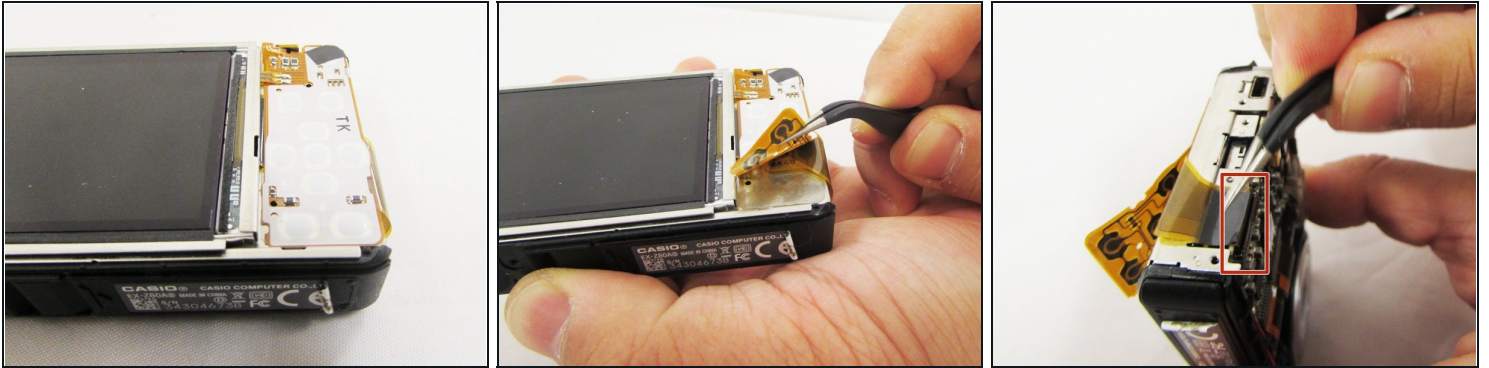
- Remove the two 2 mm silver screws from the top corners of the camera using a Phillips #000 screwdriver.
- Remove the three 2 mm screws from the left side using a Phillips #000 screwdriver.

Step 7



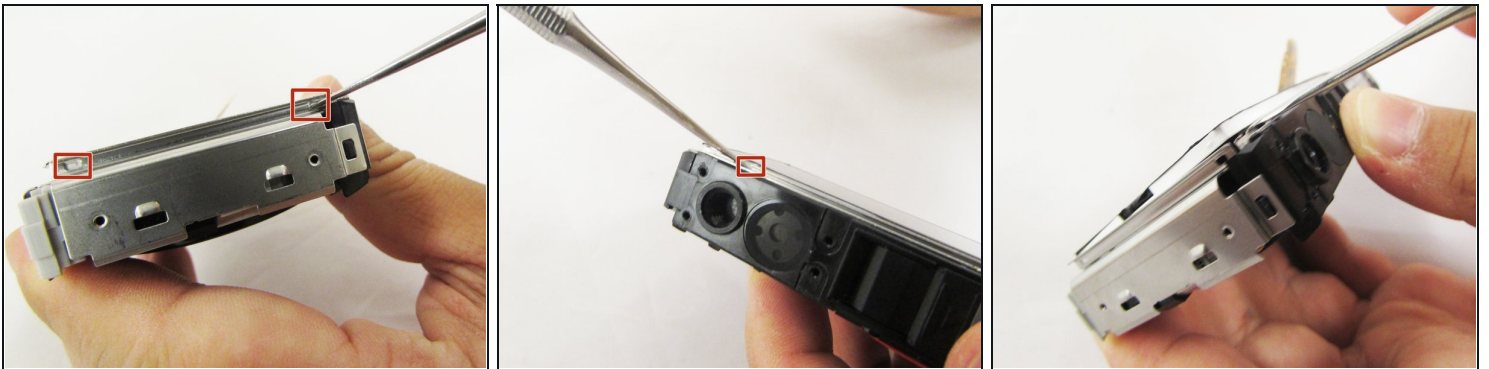
- Using a small opening tool carefully release all lock tabs at the top and on the side of the camera from their locked position.
- Using your hands, carefully separate the front and back panel from the camera.

Step 8 — LCD Screen



- Gently flip the wide button cable up from the display cable.
- Lift the brown retention flap on the display cable ZIF connector with [tweezers](#) or an ESD-safe tool.
- Carefully pull the display cable from its connector.

Step 9



- Pry the square holes that hold the LCD screen up with a metal spudger until you see the raised tabs in the metal holes.
- Repeat the process with the holes around the four edges of the camera.
- Insert the metal spudger into the gap of the metal case and pry up the LCD screen.

Step 10



- Hold up the LCD screen in one hand and hold back the button cable with the other.
⚠ Don't let the LCD screen to fall back into the metal case and make sure the button cable does not get stuck on the display cable.
- Pull on the LCD screen until the yellow display cable is fully out of the metal case.

To reassemble your device, follow these instructions in reverse order.