



# Asus X550ZA-SA100603E USB Port Replacement

How to remove the USB port found on the right side of the laptop.

Written By: Tim Linton



# INTRODUCTION

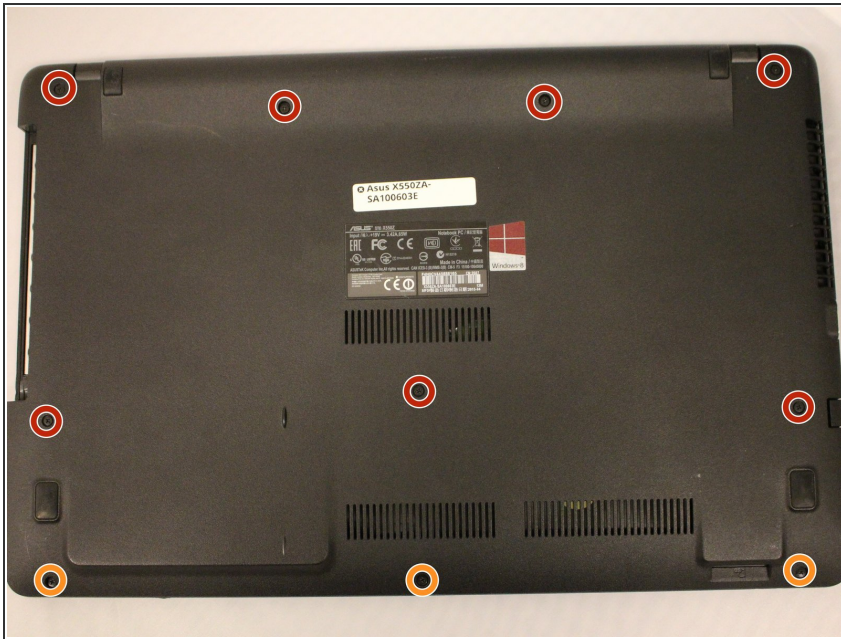
This guide will show you how to remove the USB port on the right side of your computer. You may be doing this because the port was damaged physically or is having hardware issues that can't be resolved, such as water damage.



## TOOLS:

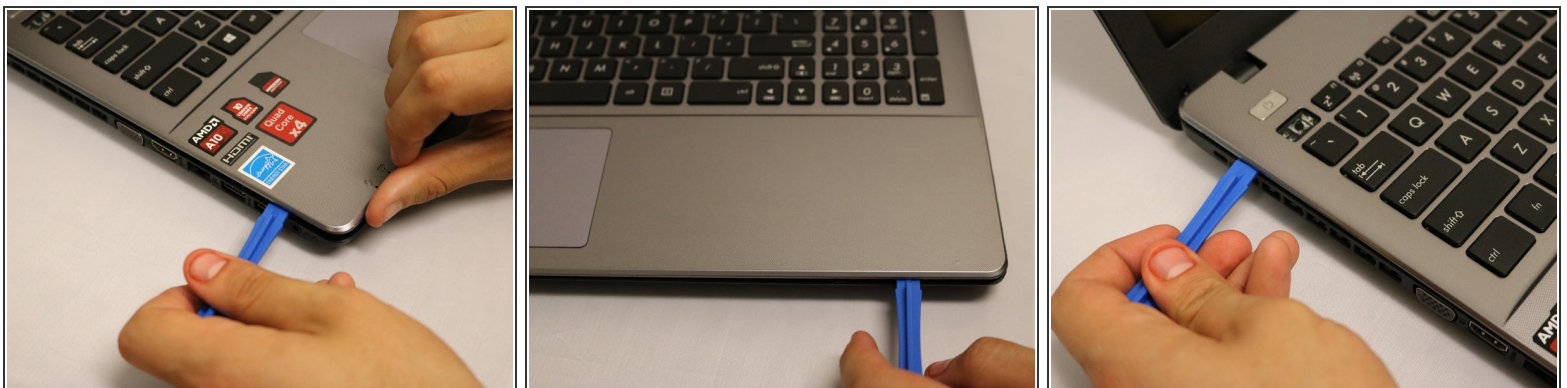
- [iFixit Opening Tools](#) (1)
  - [Phillips #0 Screwdriver](#) (1)
-

## Step 1 — Keyboard



- Using the Phillips #0 screwdriver, remove the seven 14 mm screws on the bottom of the laptop.
- Then use the Phillips #0 to remove the three 4 mm screws on the bottom of the laptop.

## Step 2

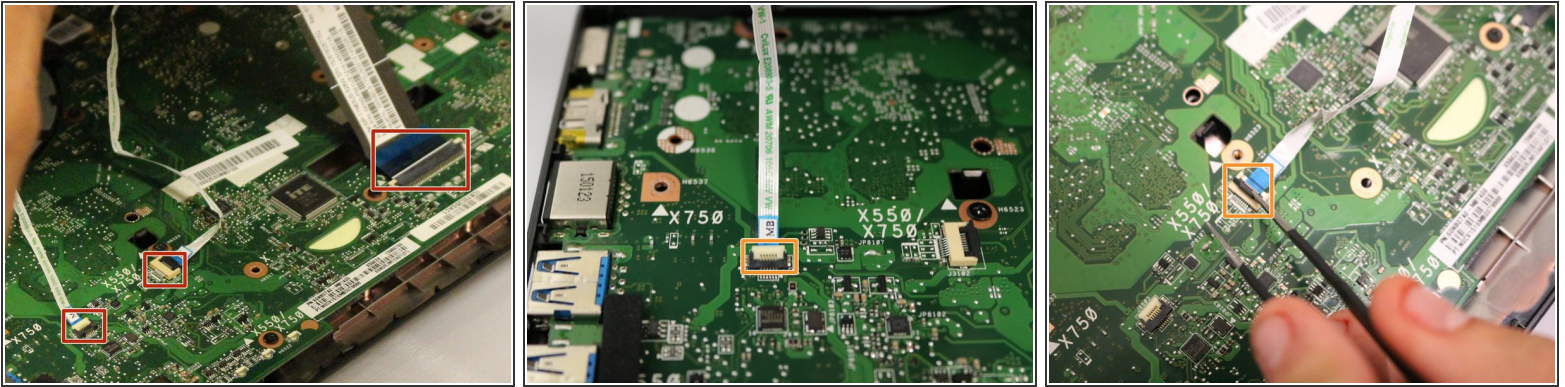


- Insert a plastic opening tool between the keyboard and base of the laptop to pry the keyboard away from the base. Do this around the entire perimeter of the laptop.
- This disconnects the face of the keyboard. Gently lift the keyboard up to expose the motherboard.

⚠ There are still ribbon cables connecting the keyboard face to the motherboard. Do not pull the keyboard away roughly.

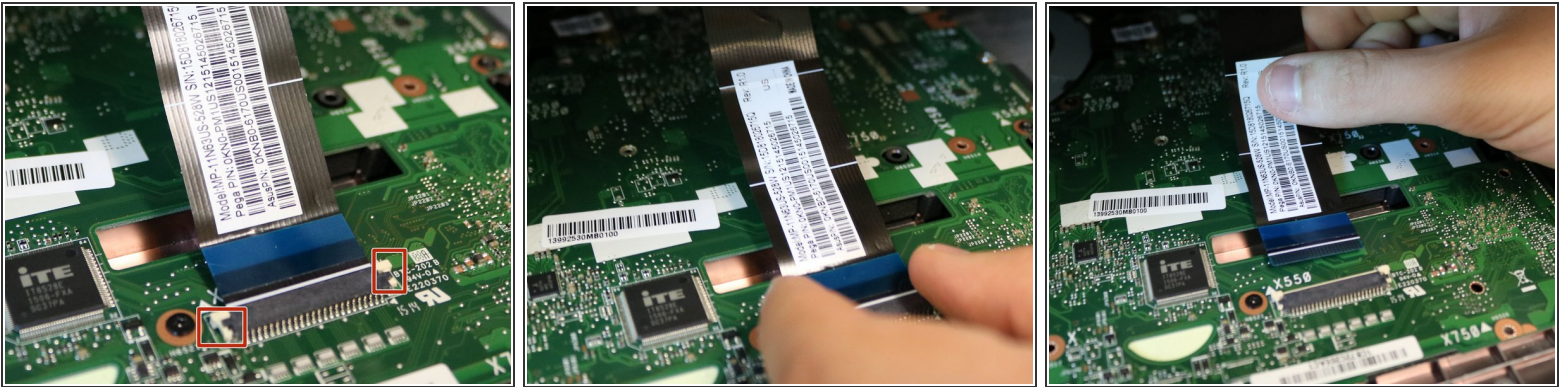


## Step 3



- Gently lift the keyboard to access the three ribbon cables connected to the motherboard
- Using precision tweezers, flip up the white and black retaining flaps on the ZIF connectors that hold the two smaller ribbon cables in place.
- Gently pull the ribbon cables from their sockets on the motherboard.

## Step 4



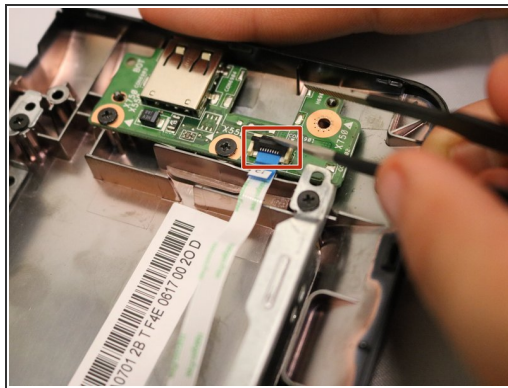
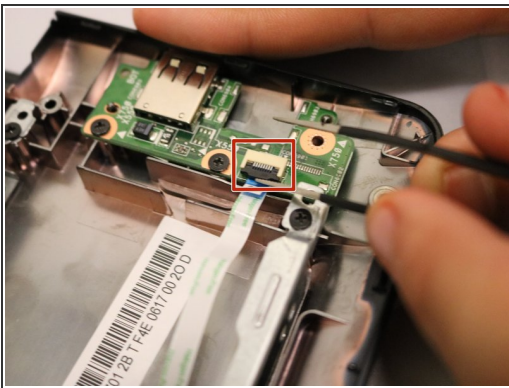
- Push the two white clamps on the large ZIF connector towards the screen.
- Gently remove the track pad ribbon cable from its connector.

## Step 5



- Remove the keyboard.

## Step 6 — USB Port



- Using precision tweezers, flip up the retaining flap on the ZIF connector securing the USB port ribbon cable.
- Gently remove the ribbon cable from the ZIF connector.

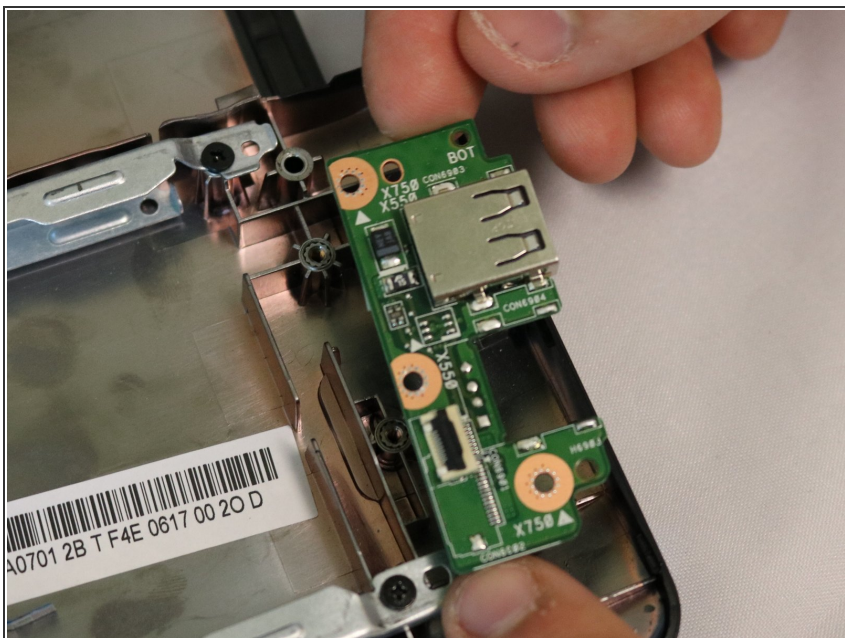


## Step 7



- Using a Phillips #0 screwdriver, remove the two 4mm screws holding the port in.

## Step 8



- Remove the port from the laptop.

To reassemble your device, follow these instructions in reverse order.