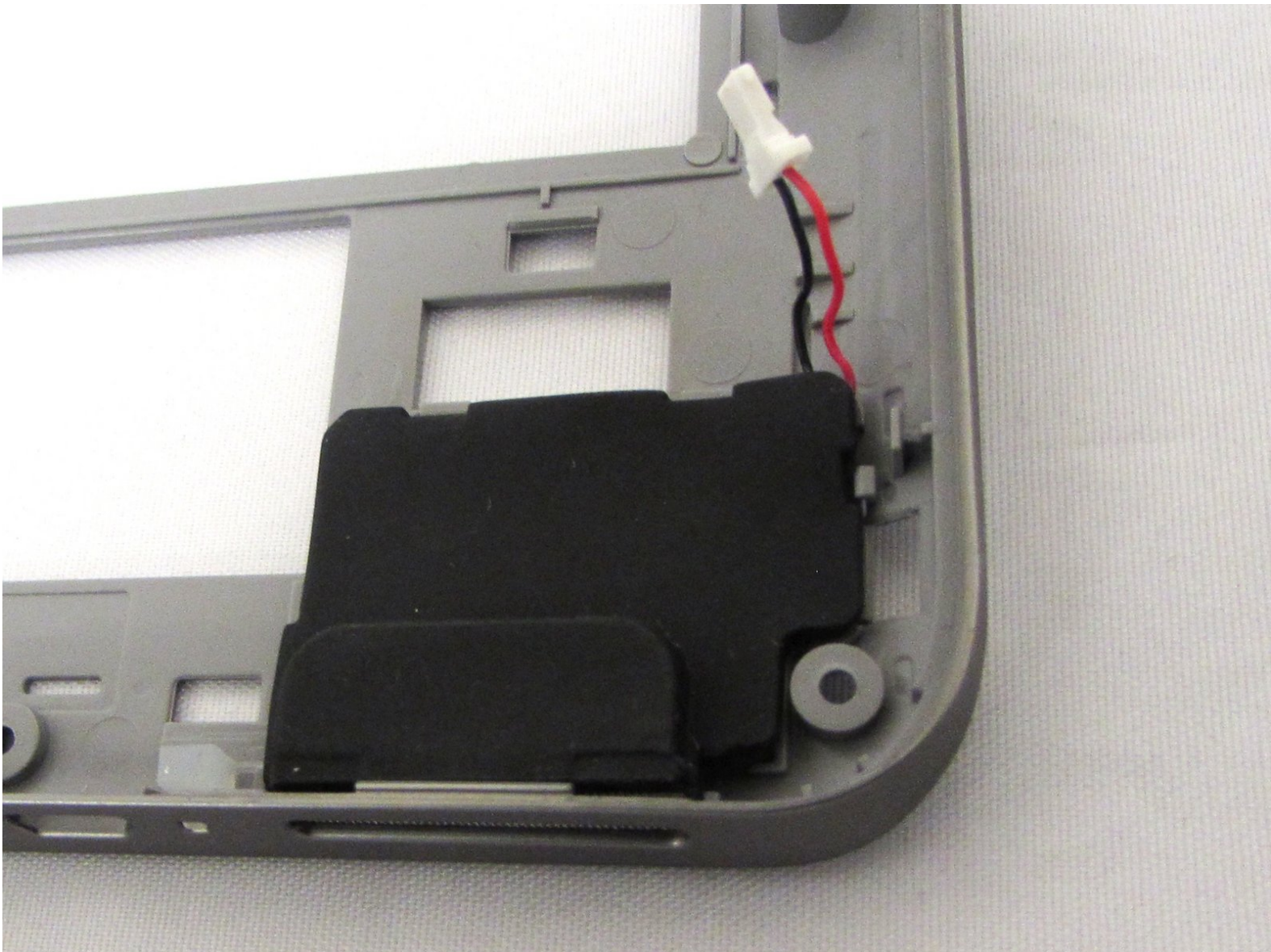




Lenovo IdeaPad A1-07 Speaker Replacement

With this guide the speaker of the Lenovo IdeaPad A1-07 can be safely removed and replaced.

Written By: Madison Cranmer



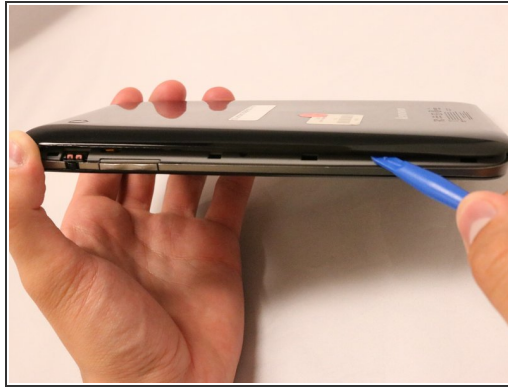
INTRODUCTION

The speaker of the Lenovo IdeaPad A1-07 may need to be replaced if the speaker no longer produces quality sound or no sound at all. With time the speaker can degrade from constant use. This guide will walk you through how to carefully take the tablet apart to access and remove the speaker from the device.

TOOLS:

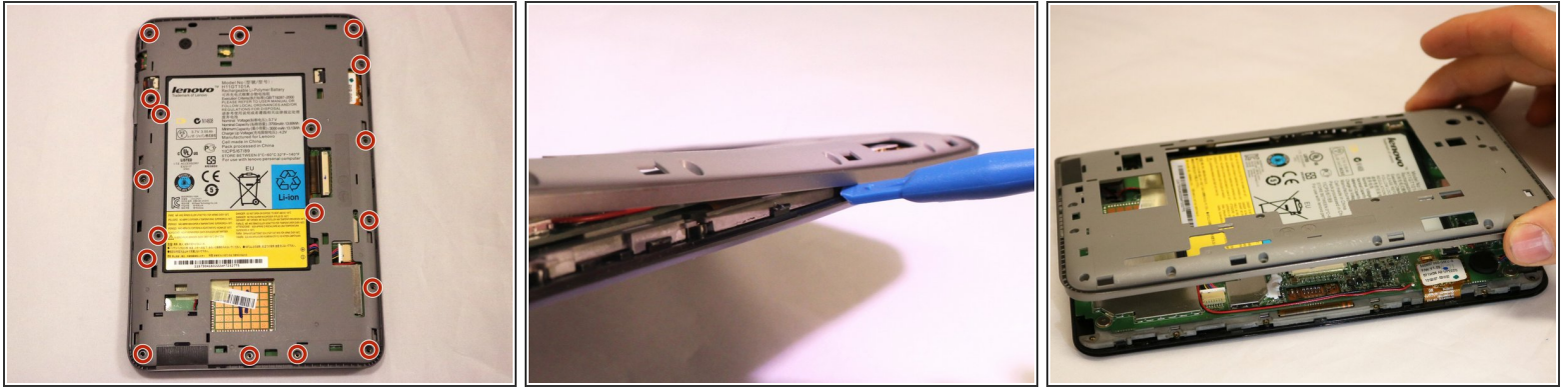
- [Phillips #000 Screwdriver](#) (1)
 - [iFixit Opening Tools](#) (1)
 - [Heavy-Duty Spudger](#) (1)
-

Step 1 — Back Cover/Midframe



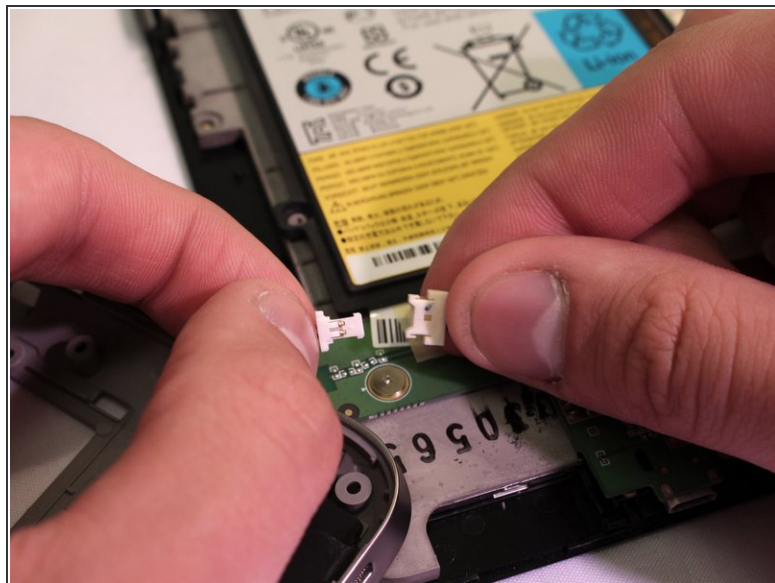
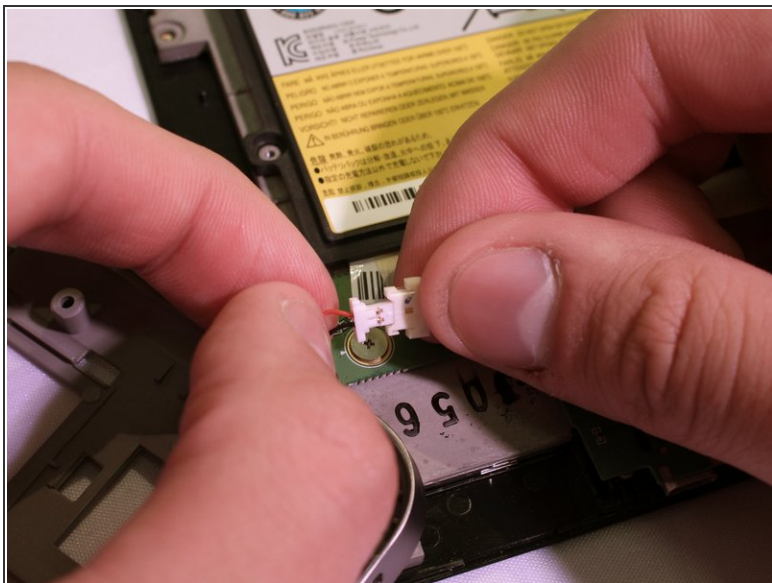
- With the blue plastic opening tool, use the lock screen switch by the volume button as an access point to gently lift the back cover off.
- Wedge the opening tool until you start hearing the back cover popping off the body of the device.
- Slide the opening tool down the length of the device.
- ⓘ Once it is about half way off, you can use your thumb to pull the rest of the back cover off.

Step 2



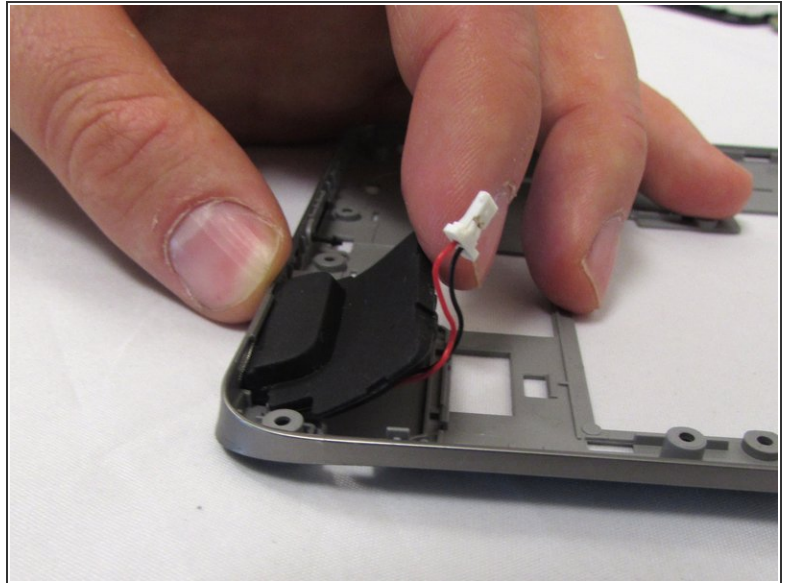
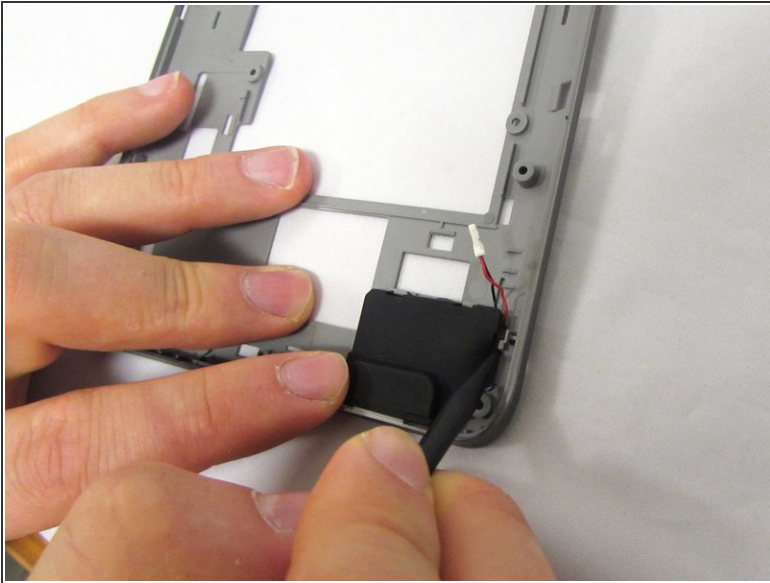
- Using a Phillips #000 screwdriver, remove all 18 of the 4mm screws.
- With the blue plastic opening tool, gently wedge the tool between the screen and the gray frame until you feel resistance.
- ⓘ Do not force the frame off because you can break off the teeth securing the frame to the screen.
- Push in the teeth with the blue plastic opening tool, towards the center of the device, and gently pull off the frame.
- ⓘ The gray frame will still be connected to the device by a pair of wires from the motherboard to the speaker.

Step 3



- ① The speaker in the grey frame is connected to the motherboard by the white plastic connector.
- Disconnect the speaker by separating the two sides of the speaker connector.

Step 4 — Speaker



- The speaker can be found on the plastic grey frame in the bottom right hand corner.
- Use the black spudger tool to push the top right of the rubber speaker in towards the center of the frame to unclip it.
- Once unclipped, you can lift and remove the speaker.

To reassemble your device, follow these instructions in reverse order.