



Altec Lansing BoomJacket Bluetooth Board Replacement

This replacement guide for the Altec Lansing BoomJacket will give step by step information about how to repair the Bluetooth Board in your device.

Written By: Ryan Byrnes



INTRODUCTION

Does your speakers bluetooth not seem to be connecting or dropping connections? The bluetooth board could be the cause.



TOOLS:

- [Phillips #0 Screwdriver](#) (1)
- [Phillips #1 Screwdriver](#) (1)
- [Metal Spudger](#) (1)
- [Tweezers](#) (1)



PARTS:

- [Rubber casing](#) (1)
- [Metal Backing](#) (1)
- [Metal Fronting](#) (1)
- [Plugs](#) (6)
- [Screws](#) (16)

Step 1 — Case Removal



- Using your hands, remove the pegs (4+4) from the front and back of the speaker.

Step 2



- Remove the outer black rubber housing of the speaker.

Step 3



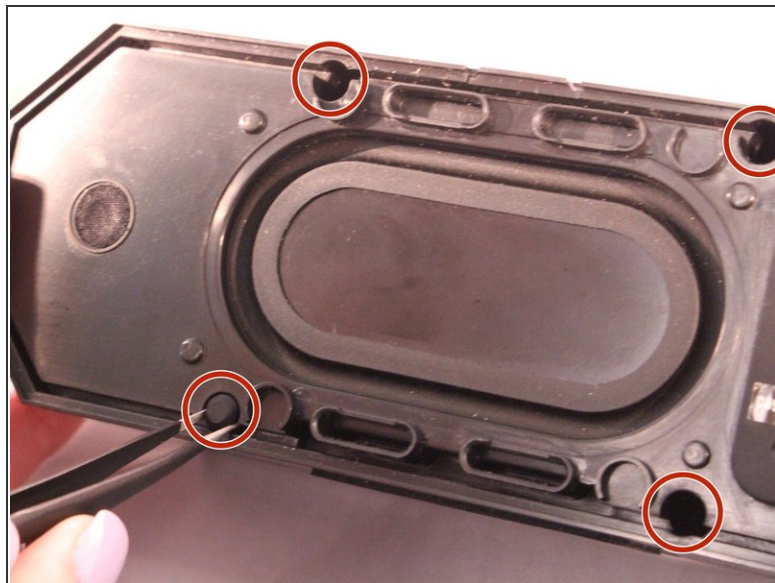
- Remove the inner blue rubber housing from the speaker.

Step 4



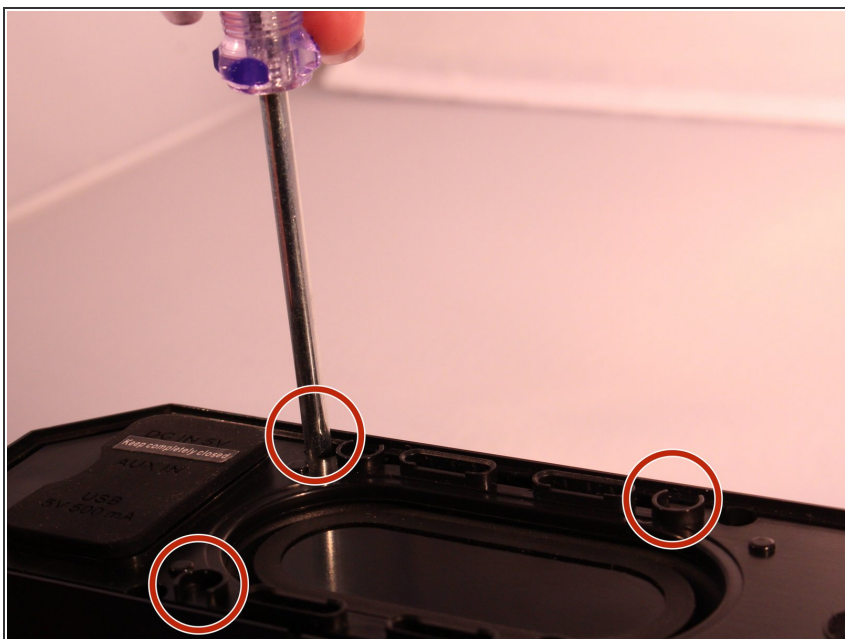
- Pull out the two black wire meshes using a metal spudger.
- ⚠ Be careful not to damage the metal casing.

Step 5



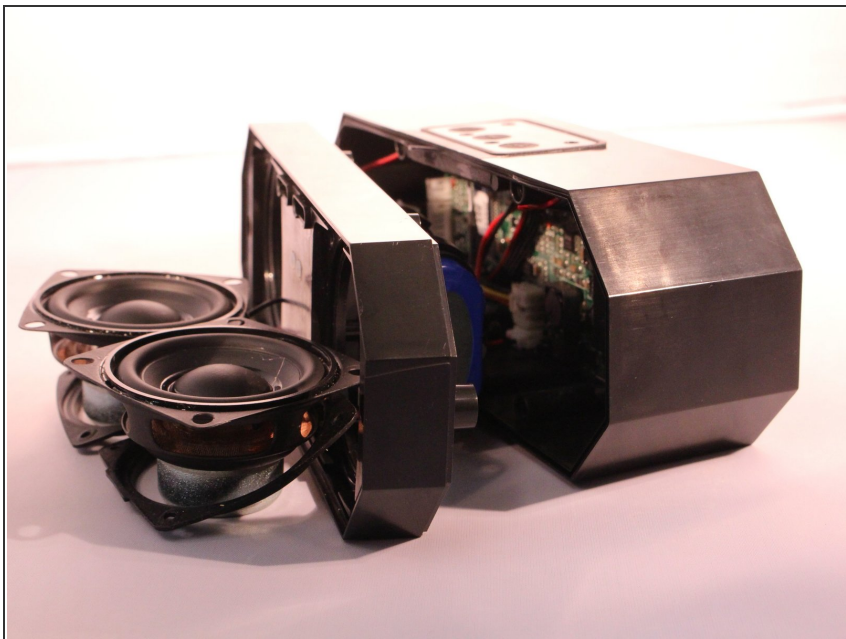
- Using tweezers remove the rubber stoppers (4 at the back + 2 at the front).

Step 6



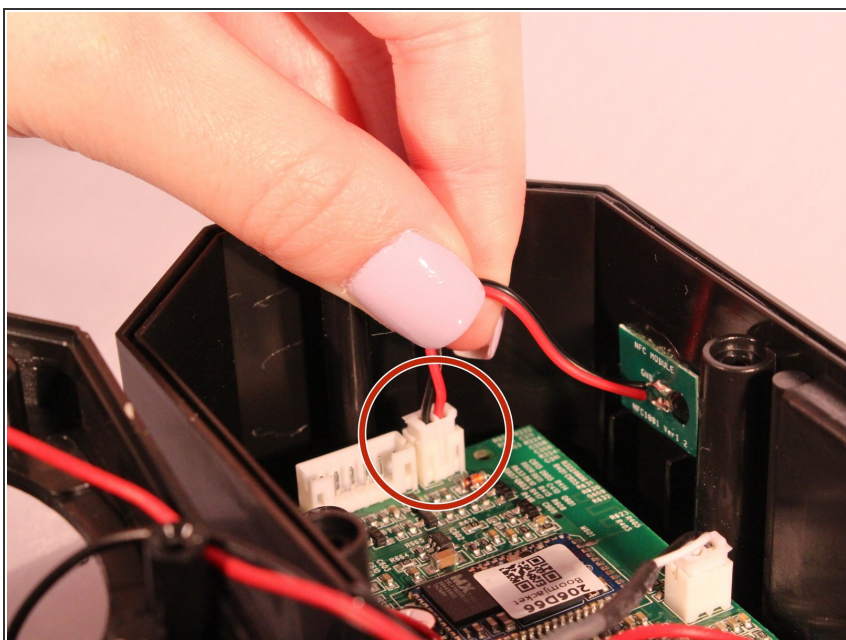
- Using the size PH1 screwdriver remove the screws exposed from the rubber stoppers (4 + 2).

Step 7



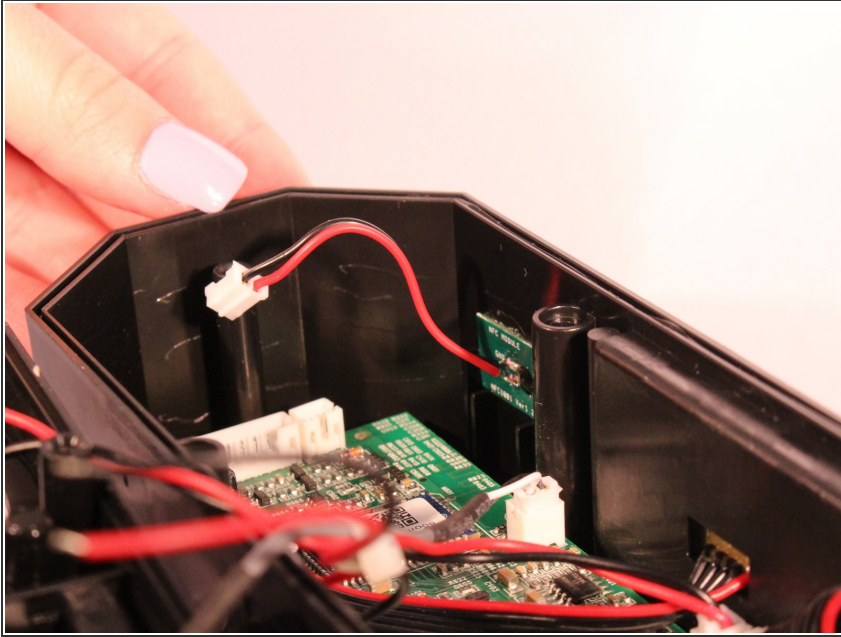
- Pull the case apart and you will be able to see all the components inside the speaker.

Step 8 — Bluetooth Board



- Now that the case is open look for the small green (NFC) chip on the inside of the case next to the motherboard.

Step 9



- Disconnect the Bluetooth (NFC) chip from the motherboard.

To reassemble your device, follow these instructions in reverse order.