



# Altec Lansing BoomJacket Case Removal

This replacement guide for the Altec Lansing BoomJacket will give step by step information about how to remove the case that surrounds the speakers.

Written By: Ryan Byrnes



# INTRODUCTION

Are you trying to repair a part inside your speaker but need to first remove the case that surrounds the speakers? This guide will help you do just that!

---

## TOOLS:

- [Metal Spudger](#) (1)
  - [Tweezers](#) (1)
  - [Phillips #0 Screwdriver](#) (1)
  - [Phillips #1 Screwdriver](#) (1)
-

## Step 1 — Case Removal



- Using your hands, remove the pegs (4+4) from the front and back of the speaker.

## Step 2



- Remove the outer black rubber housing of the speaker.



### Step 3



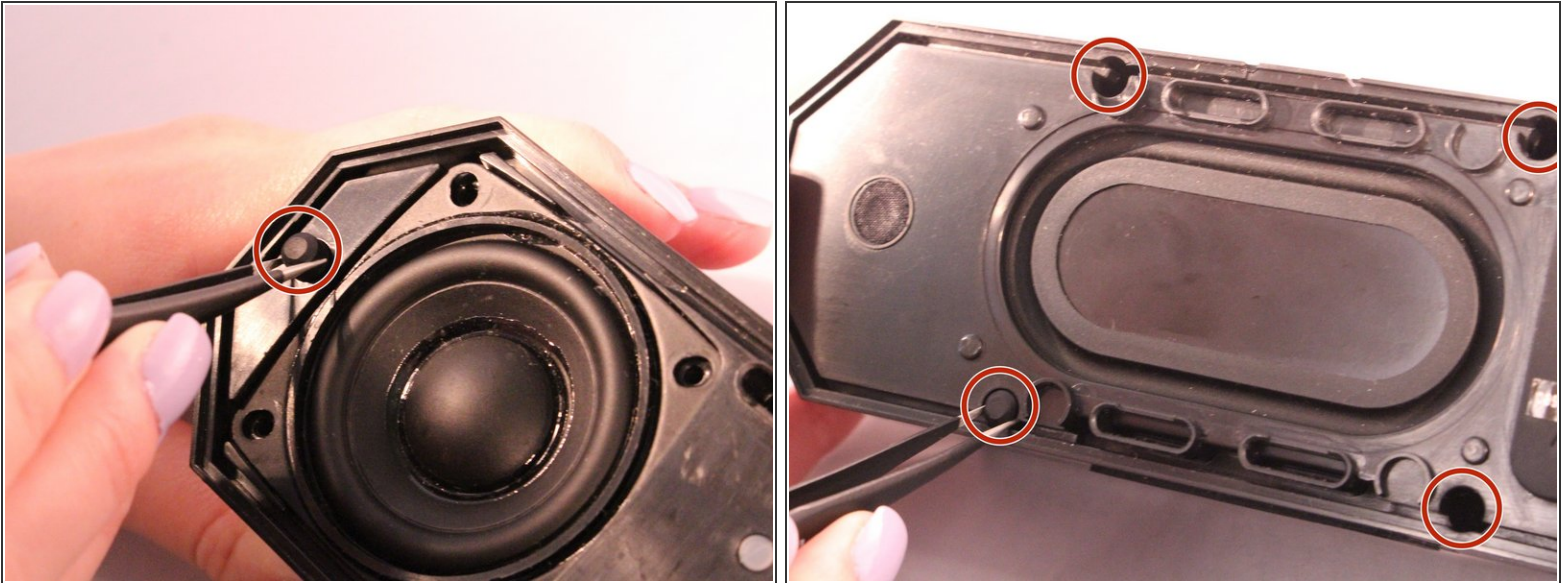
- Remove the inner blue rubber housing from the speaker.

### Step 4



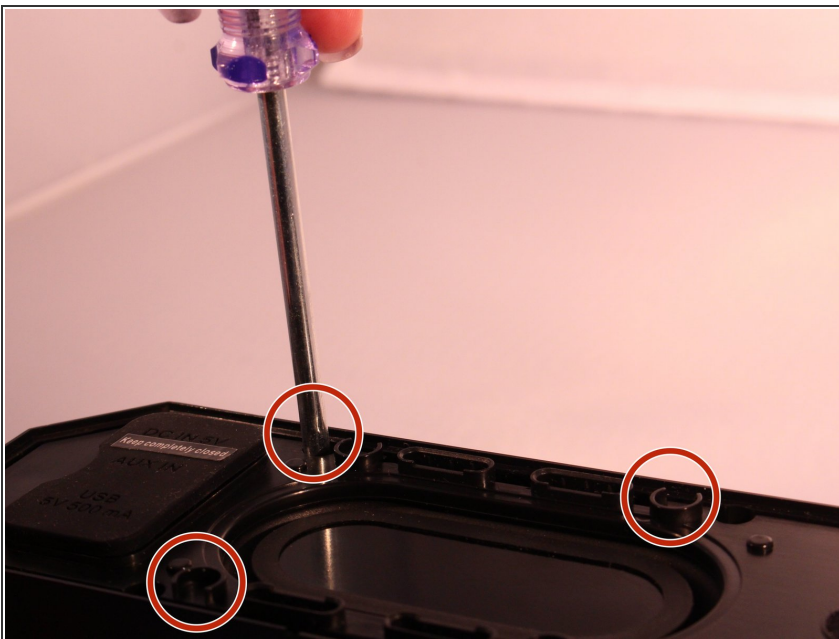
- Pull out the two black wire meshes using a metal spudger.
- ⚠ Be careful not to damage the metal casing.

## Step 5



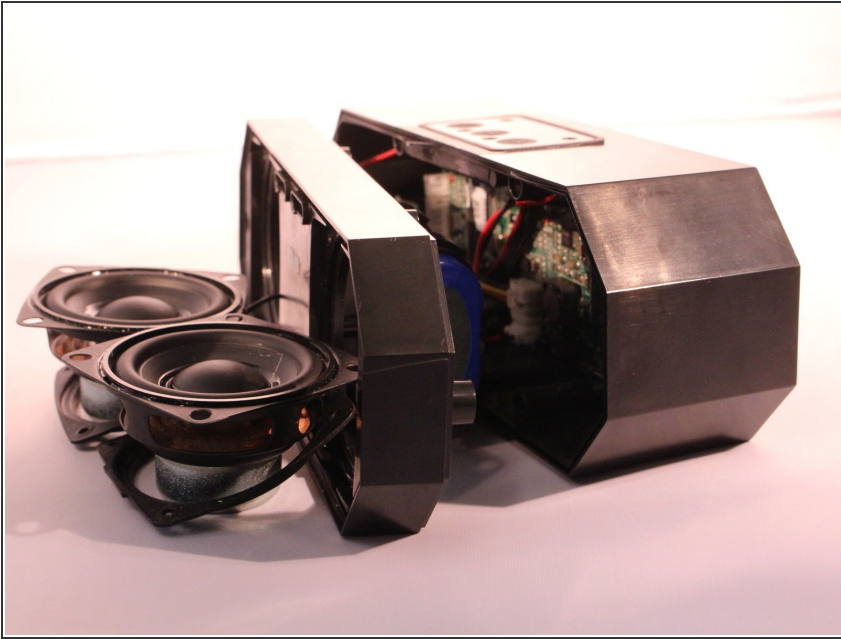
- Using tweezers remove the rubber stoppers (4 at the back + 2 at the front).

## Step 6



- Using the size PH1 screwdriver remove the screws exposed from the rubber stoppers (4 + 2).

## Step 7



- Pull the case apart and you will be able to see all the components inside the speaker.

To reassemble your device, follow these instructions in reverse order.