



Altec Lansing BoomJacket Battery Replacement

Is your Altec Lansing BoomJacket having...

Written By: Ryan Byrnes



INTRODUCTION

Is your Altec Lansing BoomJacket having charging issues or will not charge at all?
Replacing the battery may help.

TOOLS:

Phillips #0 Screwdriver (1)
Phillips #1 Screwdriver (1)
Metal Spudger (1)
Tweezers (1)

PARTS:

Rubber casing (1)
Screws (16)
Metal Backing (1)
Metal Fronting (1)
Plugs (6)

Step 1 — Case Removal



- Using your hands, remove the
pegs (4+4) from the front and
back of the speaker.

Step 2



- Remove the outer black rubber housing of the speaker.

Step 3



- Remove the inner blue rubber housing from the speaker.

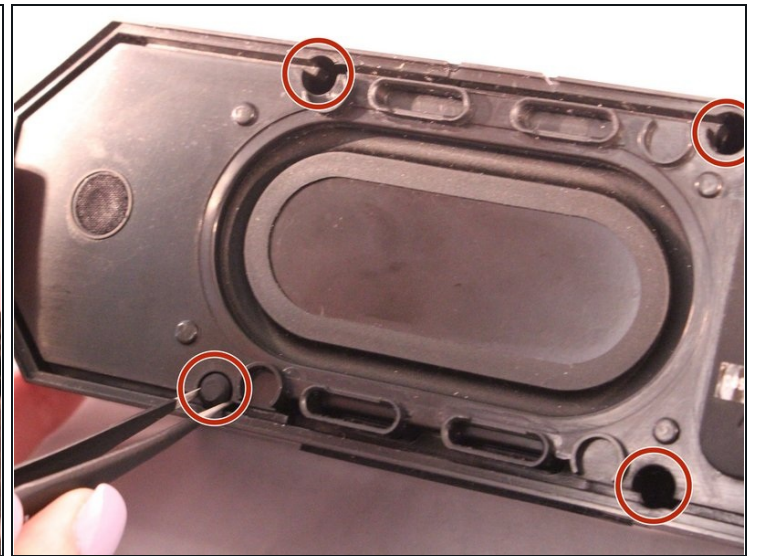
Step 4



- Pull out the two black wire meshes using a metal spudger.

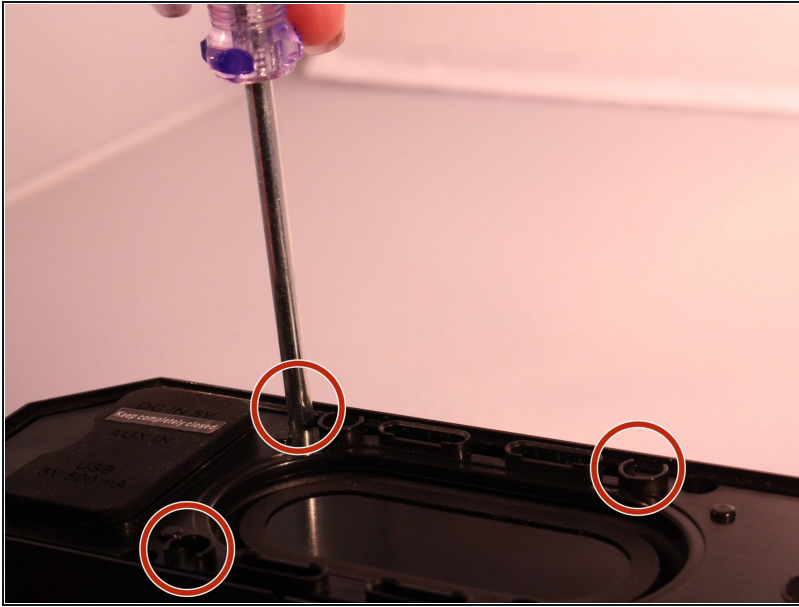
⚠ Be careful not to damage the metal casing.

Step 5



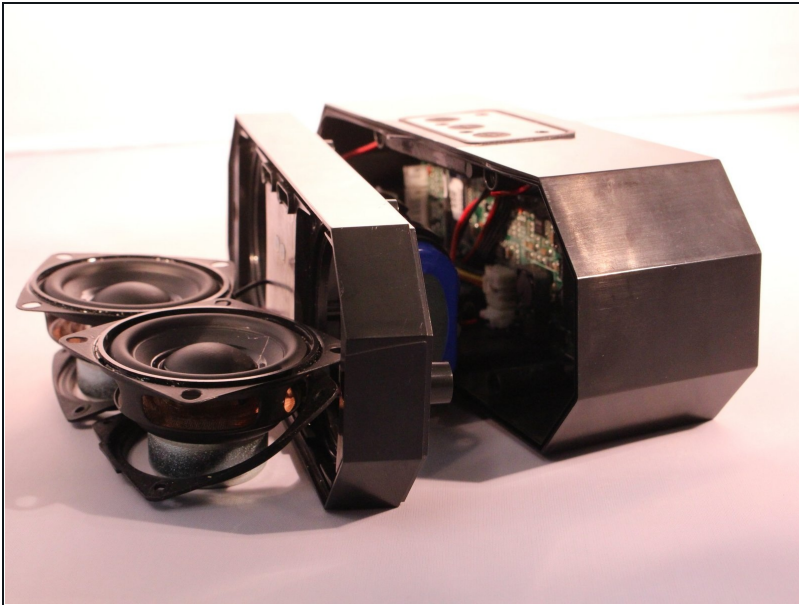
- Using [tweezers](#) remove the rubber stoppers (4 at the back + 2 at the front).

Step 6



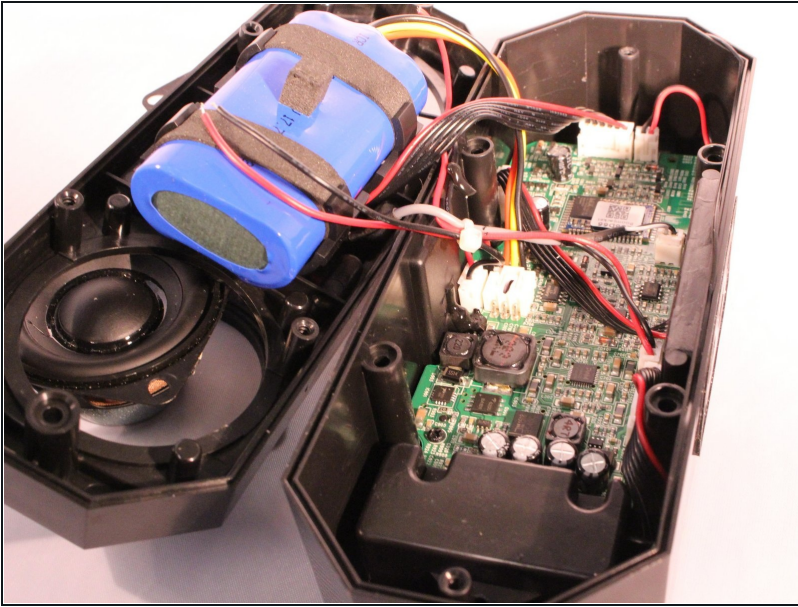
- Using the size PH1 screwdriver remove the screws exposed from the rubber stoppers (4 + 2).

Step 7



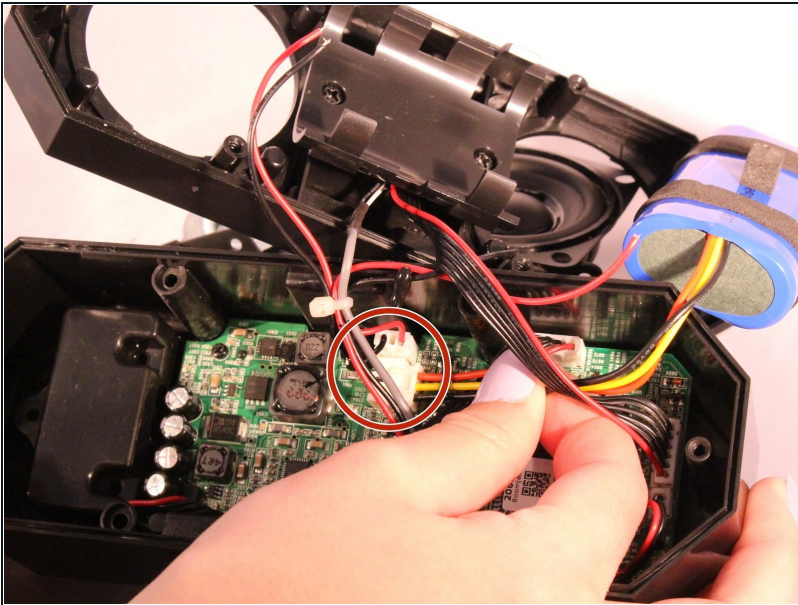
- Pull the case apart and you will be able to see all the components inside the speaker.

Step 8 — Battery



- The battery will be sitting right behind the speakers when the case is open.

Step 9



- Unplug and disconnect the battery from the motherboard.

To reassemble your device, follow these instructions in reverse order.