



iMac Intel 24" EMC 2134 and 2211 Display Panel Replacement

Written By: Brittany McCrigler



INTRODUCTION

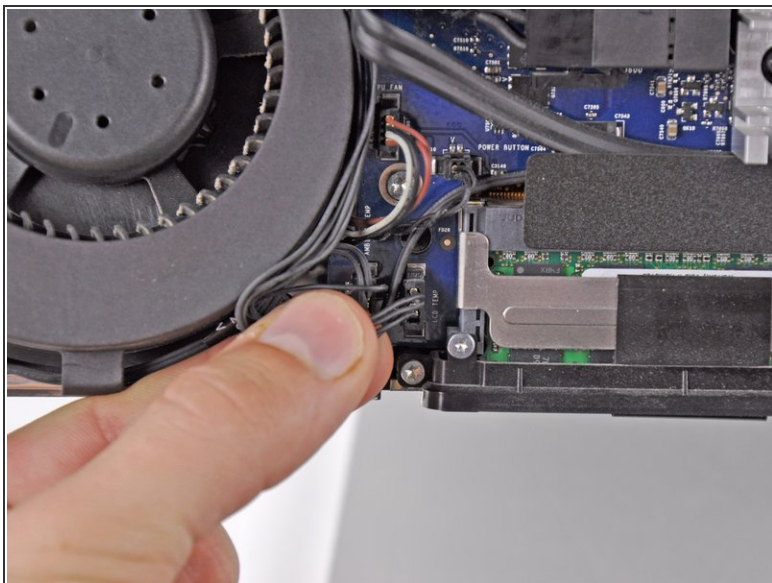
Remove your display panel to gain access to the hard drive, optical drive, and power supply.



TOOLS:

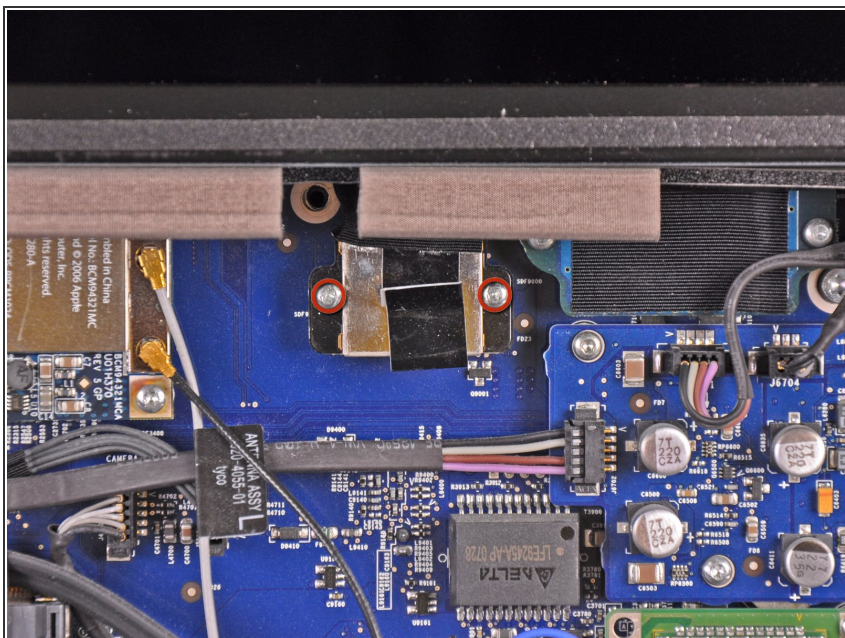
- [T6 Torx Screwdriver](#) (1)
-

Step 1 — Display Panel



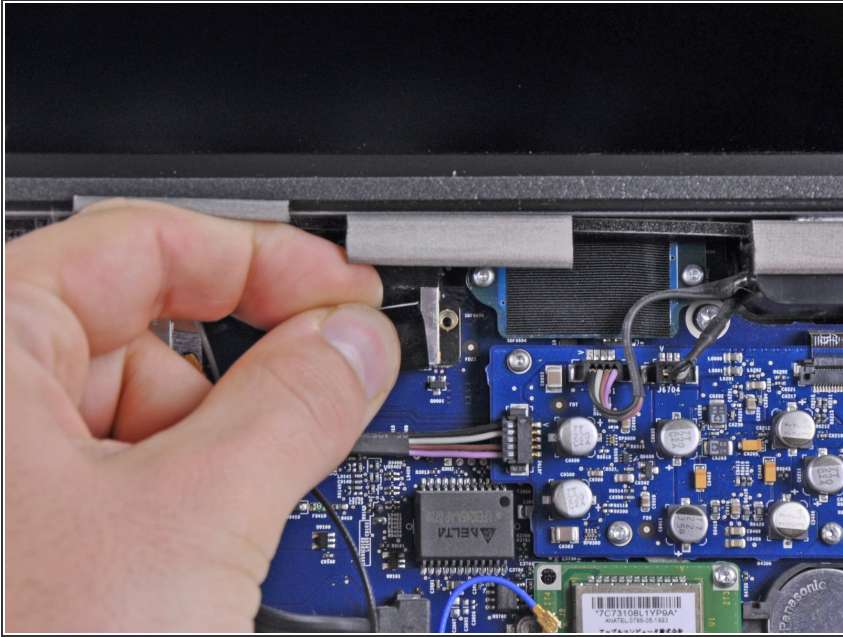
- Disconnect the LCD temperature sensor by pulling the connector straight out of its socket on the logic board.
- ⓘ If necessary, de-route the LCD temperature sensor cable from behind the logic board.

Step 2



- Remove the two 5.3 mm T6 Torx screws securing the display data cable to the logic board.

Step 3



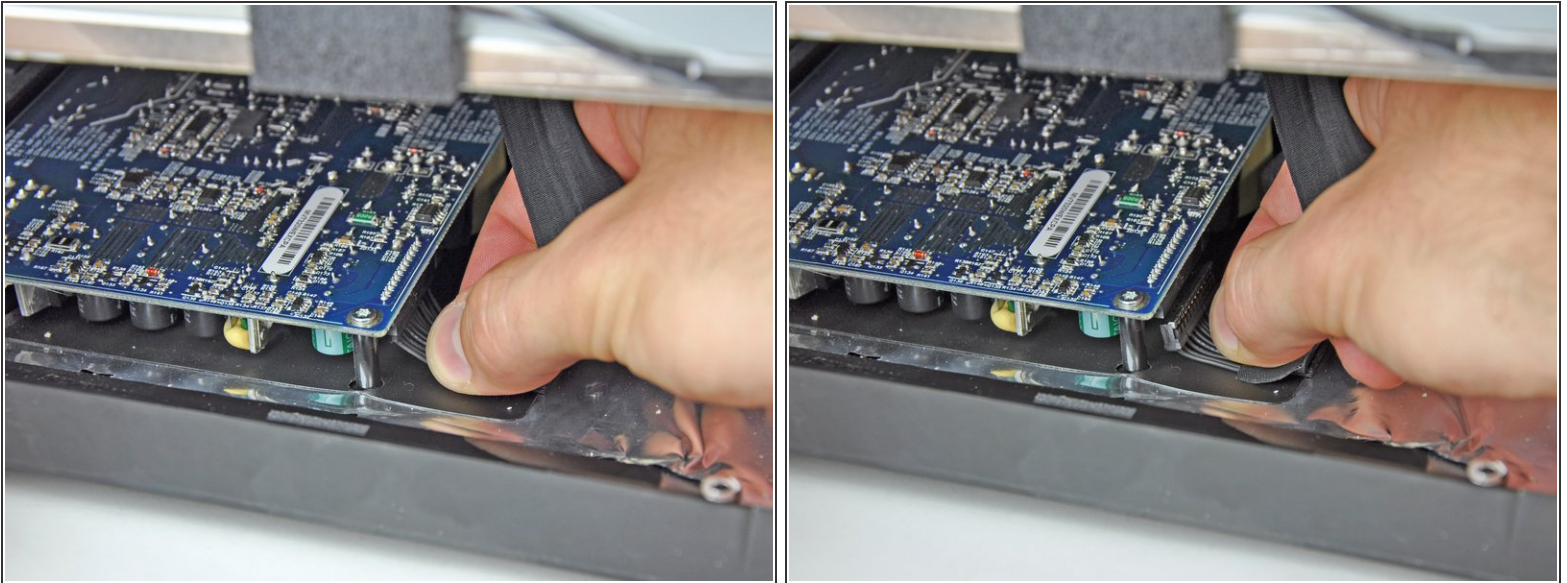
- Disconnect the display data cable connector from its socket on the logic board by pulling the attached plastic tab towards you and away from the iMac.

Step 4



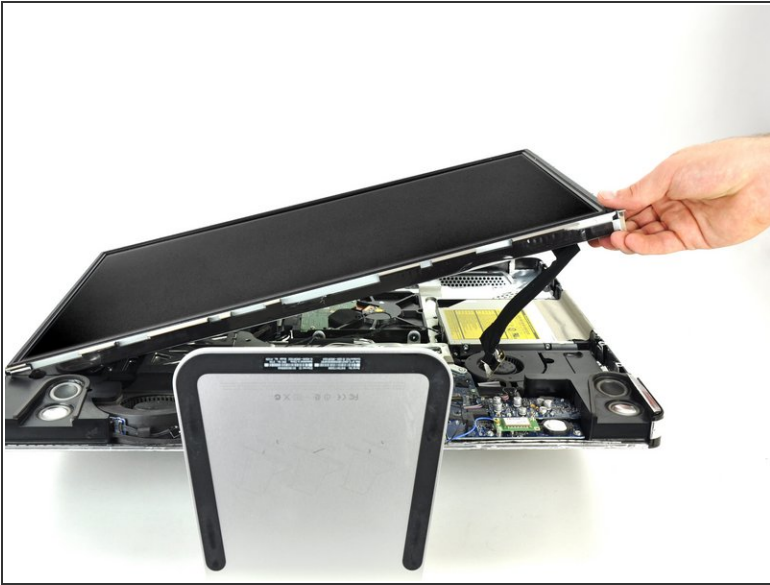
- ⚠ Lay the iMac down on a table before you remove the LCD so that it doesn't fall.
- Remove the eight 12 mm T8 Torx screws securing the display panel to the rear case.
- Lift the right side of the display panel a few inches up from the iMac.
- ⚠ Do not lift the LCD all the way up; there are still connectors attaching the LCD to the internals.

Step 5



- With the LCD lifted, disconnect the LCD cable by pulling down.
- ⚠ The LCD cable is attached to the underside of the power supply; be careful where you put your fingers so you don't get zapped by a capacitor.
- ✦ On reassembly, you may find it helpful to remove the power supply, reconnect the LCD power cable, and then reinstall the power supply.
 - Alternatively, the LCD power cable can be disconnected from the LCD, rather than the power supply.

Step 6



- Continue to lift the LCD from the right side.
- Remove the LCD.

To reassemble your device, follow these instructions in reverse order.