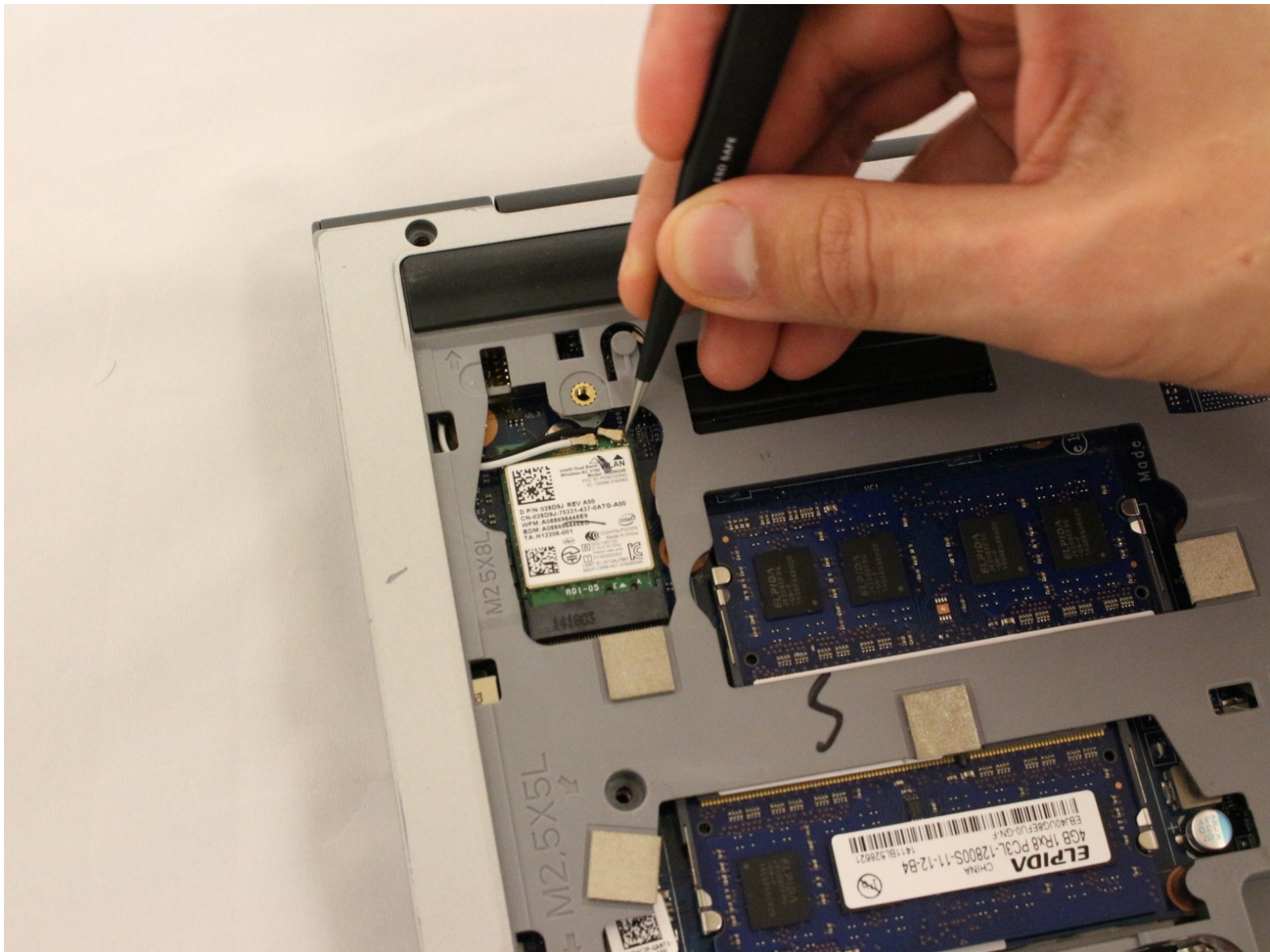




Dell Inspiron 14-5447 Wi-Fi Card Replacement

Replacing a faulty Wi-Fi card for the Dell Inspiron 14-5447.

Written By: Isabella Chavez



INTRODUCTION

This guide will cover the steps needed to repair a faulty Wi-Fi card for the Dell Inspiron 14-5447 laptop. Make sure that prior to starting this guide, the device is not plugged into any power source and it is turned off.



TOOLS:

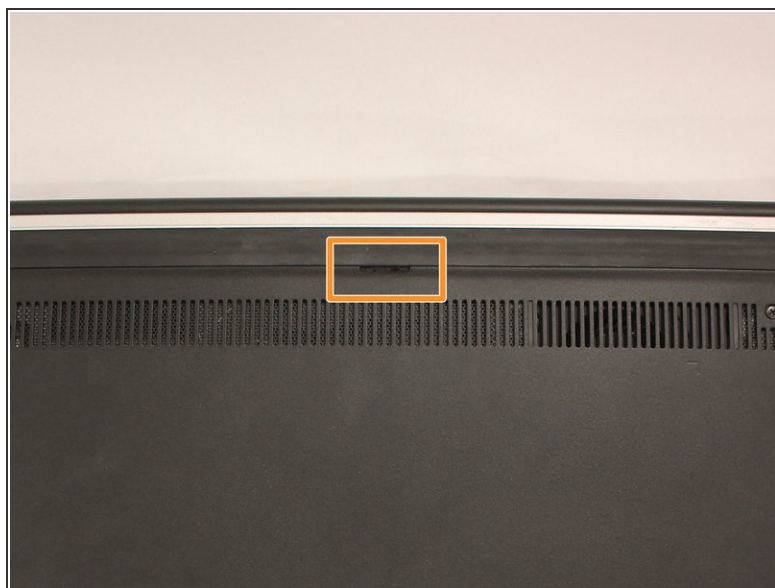
- [Phillips #0 Screwdriver](#) (1)
 - [Phillips #1 Screwdriver](#) (1)
 - [iFixit Opening Tool](#) (1)
 - [Spudger](#) (1)
 - [Tweezers](#) (1)
-

Step 1 — Battery



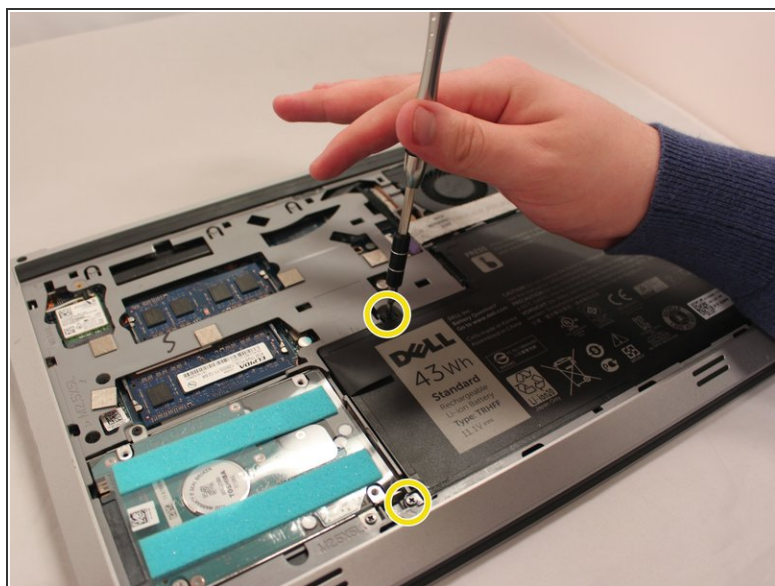
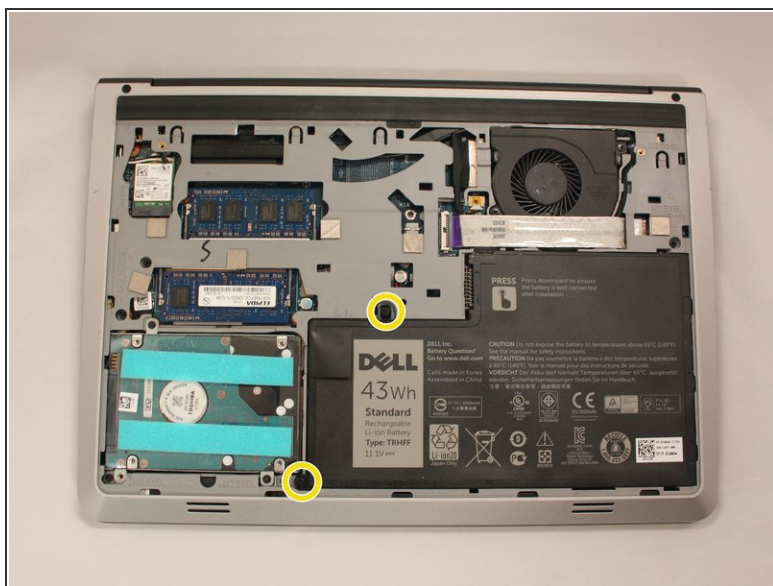
- Flip the laptop upside down to access the battery.

Step 2



- Remove the two black 5.70mm Phillips#0 screws on the case's back.
- Insert a plastic opening tool into the small slit, centered between the removed screws, and pry open the back cover

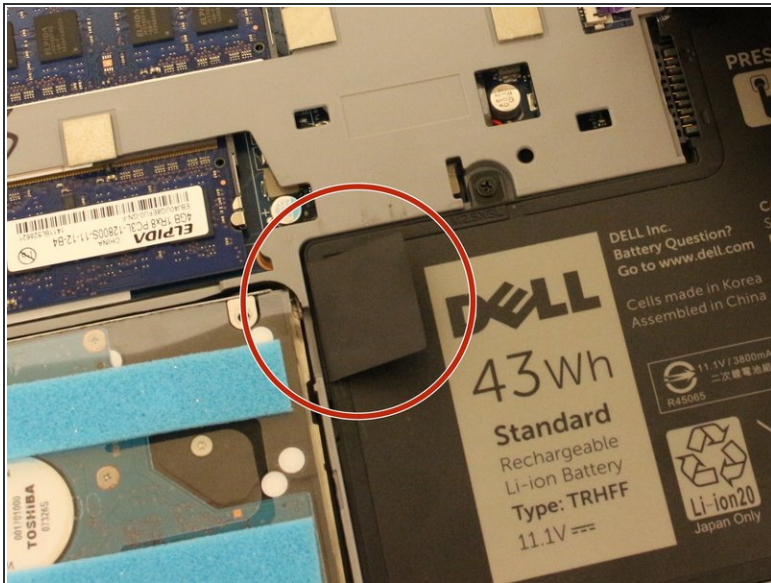
Step 3



- Remove the two 5.70mm Phillips #0 screws that secure the battery in place on its left side .

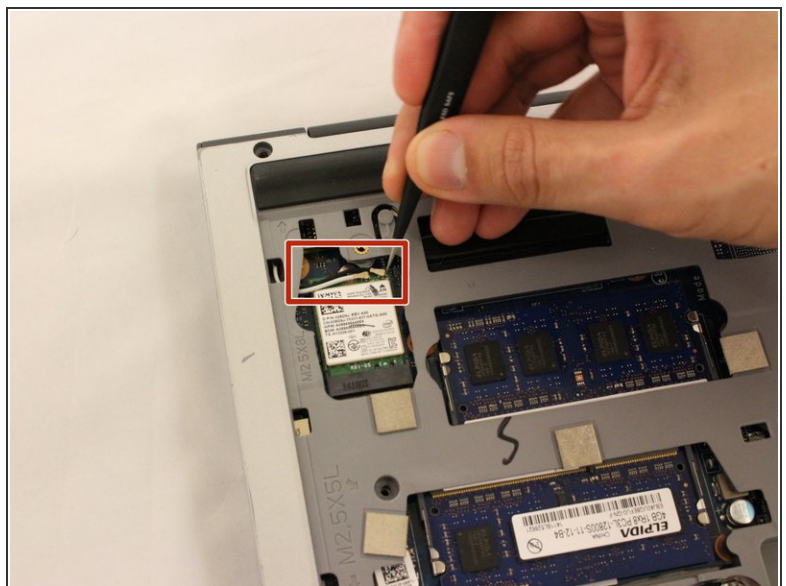
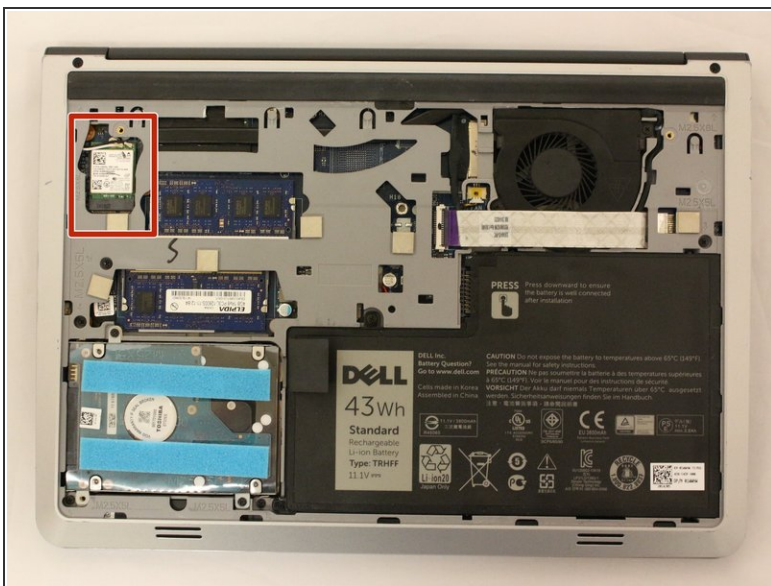
⚠ Treat the battery with care - puncturing or bending may cause damage to the battery and may result in fire or injury.

Step 4



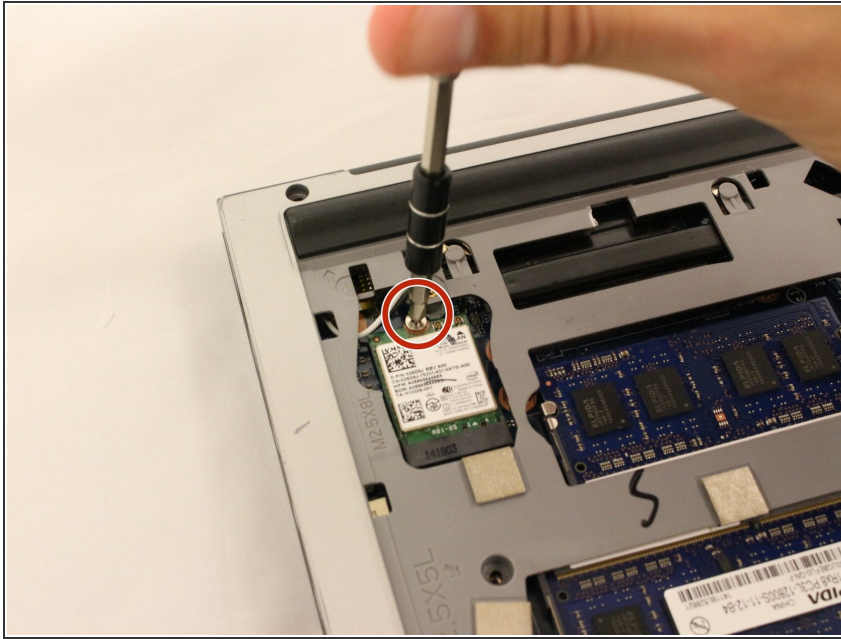
- Use the black, plastic flap on the left side to pull the battery out.
- Slowly lift the flap up and the battery should slide out.

Step 5 — Wi-Fi Card



- Locate the Wifi card on the top left of the laptop.
- Use the tweezers to release the black and white cables.

Step 6



- Remove one silver 2.9mm Phillips #1 screw which secures the WiFi card.

Step 7



- ① The Wi-Fi card should slide out of the black socket.
- Use tweezers to push the white part of the Wi-Fi card up towards the top of the device to remove.
- Remove the card with the tweezers.

To reassemble your device, follow these instructions in reverse order.