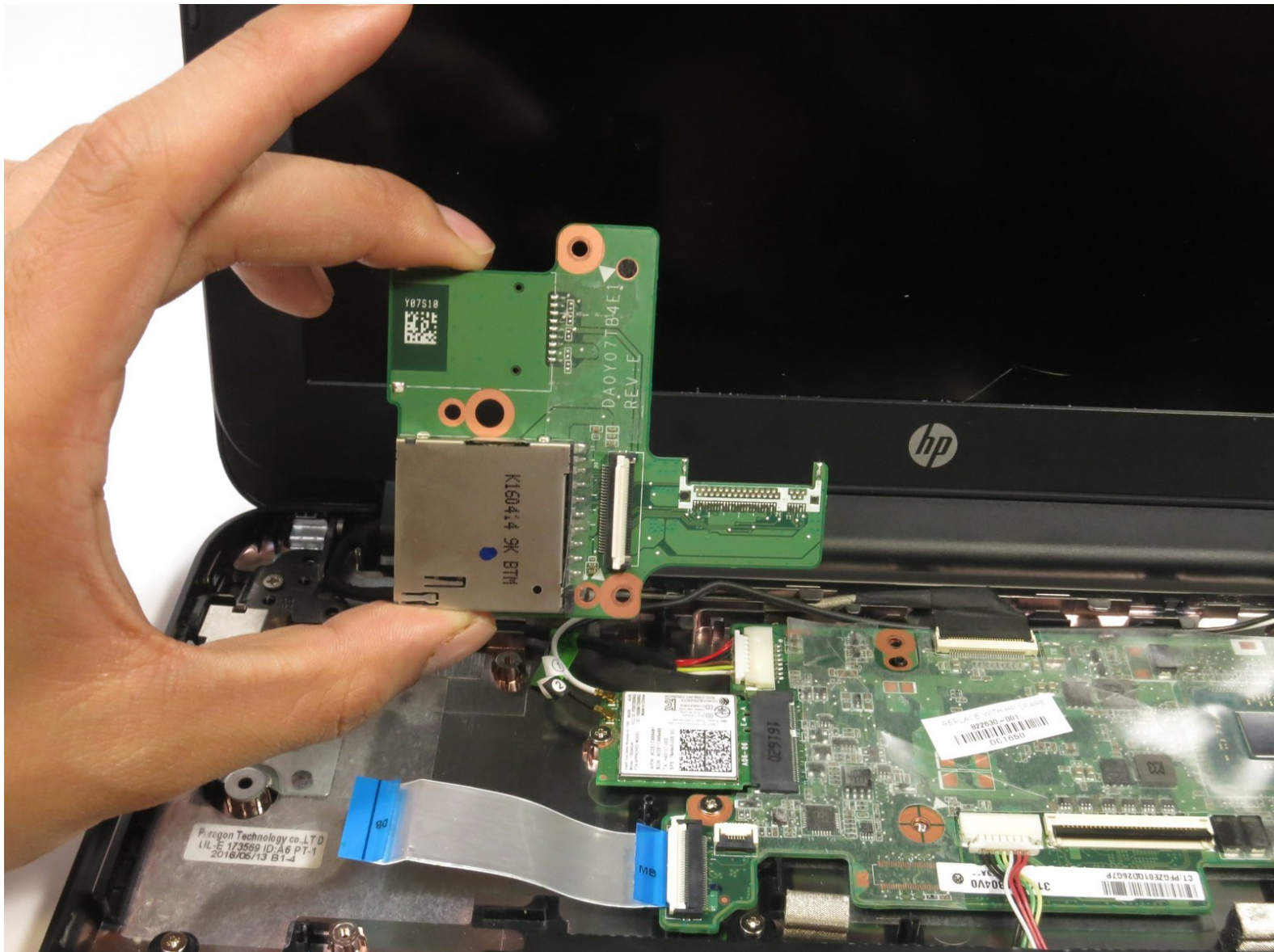




HP Chromebook 11 G4 SD Card Reader Replacement

Replace the SD card reader of the HP Chromebook 11 G4.

Written By: Jair Herrera



INTRODUCTION

This guide will walk you through how to replace the SD card reader on the HP Chromebook 11 G4. Once you remove the keyboard, the SD card reader is a cinch to replace.



TOOLS:

- [Phillips #1 Screwdriver](#) (1)
- [Spudger](#) (1)



PARTS:

- [HP Chromebook 11 G3/G4 SD Memory Card Reader](#) (1)

Step 1 — Keyboard




- Position the closed Chromebook with the rubber pads are facing up.

Step 2



- Slide the flat end of the spudger under the rubber pads at the upper right-hand and the upper left-hand corners.
- Pry off the rubber pads to reveal a screw under each pad.

 The rubber pads are attached with a strong adhesive. The force applied may damage the pads.

This document was generated on 2020-11-28 05:56:37 AM (MST).

Step 3



- Remove the eleven 6mm Phillips #1 screws.

Step 4



- Flip over the Chromebook and open it.

Step 5



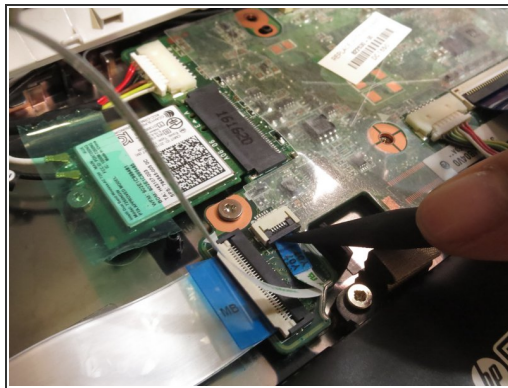
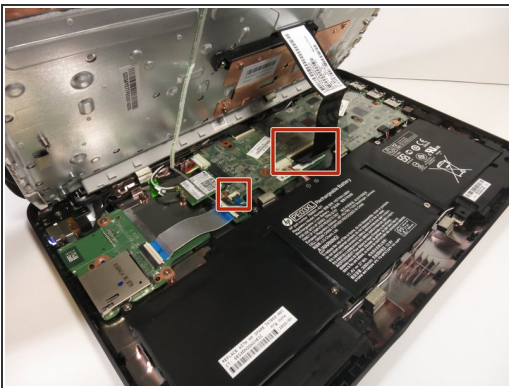
- Insert the flat end of the spudger between the bottom body of the Chromebook and keyboard body.
- Slide the spudger along the gap, applying downward pressure to separate the two components.
- ⓘ You should hear popping sounds as you slide the spudger along the edge.
- ⓘ If the spudger gets stuck while sliding, simply slide the spudger back for a bit, and continue sliding forward.

Step 6



- Lift the bottom of the keyboard assembly to reveal the internal components of the device.

Step 7



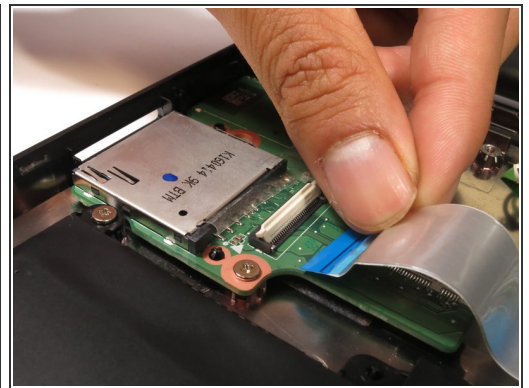
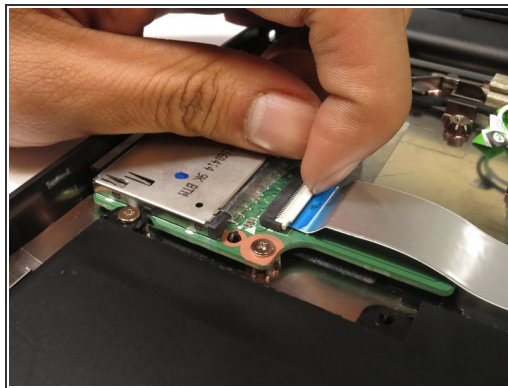
- Use the pointed end of the spudger to flip up the black tabs on the two ZIF connectors located on the motherboard.
- Disconnect the ribbon cables from the motherboard by gently sliding them out of their sockets.

Step 8



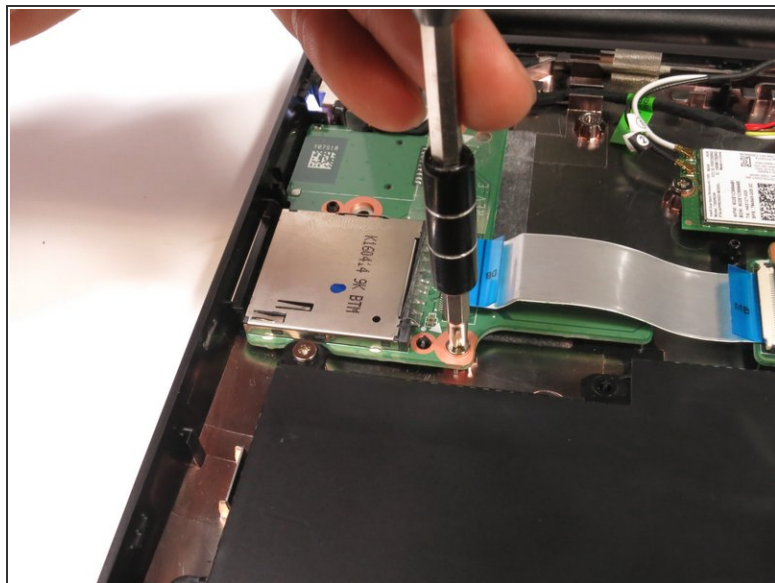
- Remove the keyboard assembly by lifting it off the laptop base.

Step 9 — SD Card Reader



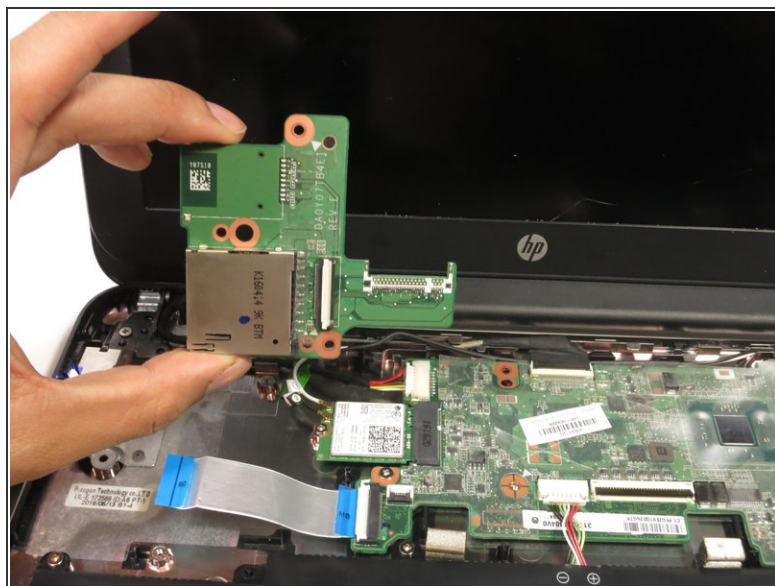
- Flip up the flap on the ZIP connector with your finger.
- Gently pull out the ribbon cable.

Step 10



- Remove the two 4 mm Phillips #1 screws.

Step 11



- Lift the ribbon cable back and out of the way.
- Pull out the SD card reader.

To reassemble your device, follow these instructions in reverse order.