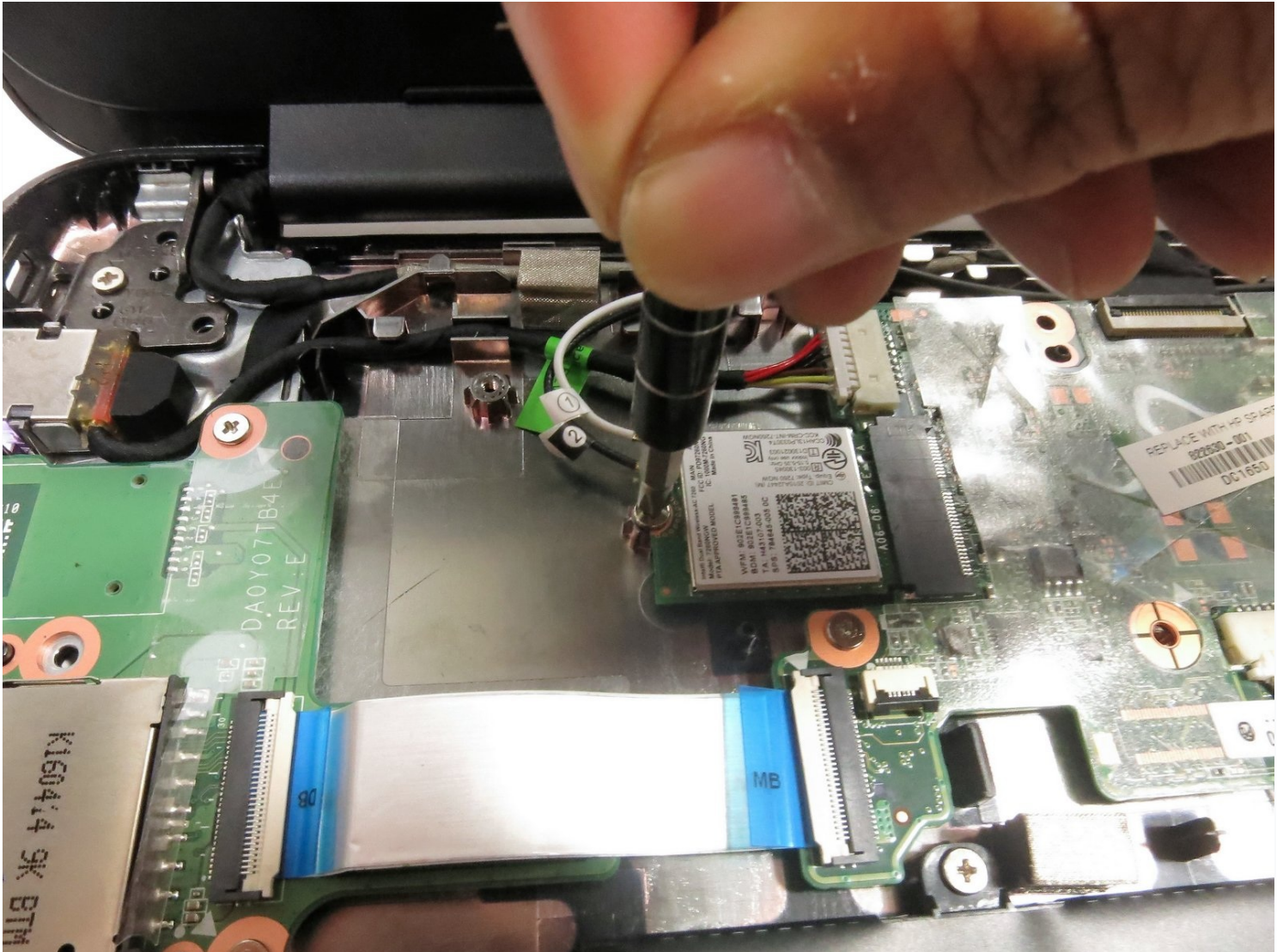




# HP Chromebook 11 G4 Wi-Fi Card Replacement

The Wi-Fi card is what allows the HP Chromebook...

Written By: Jair Herrera



# INTRODUCTION

The Wi-Fi card is what allows the HP Chromebook 11 G4 to connect to the internet through a wireless connection. However, if the Chromebook does not read a connection to the Wi-Fi card, then it needs to be replaced.

---

## TOOLS:

Phillips #1 Screwdriver (1)  
Spudger (1)

## PARTS:

HP Chromebook 11 G3/G4 Wi-Fi Card  
(1)

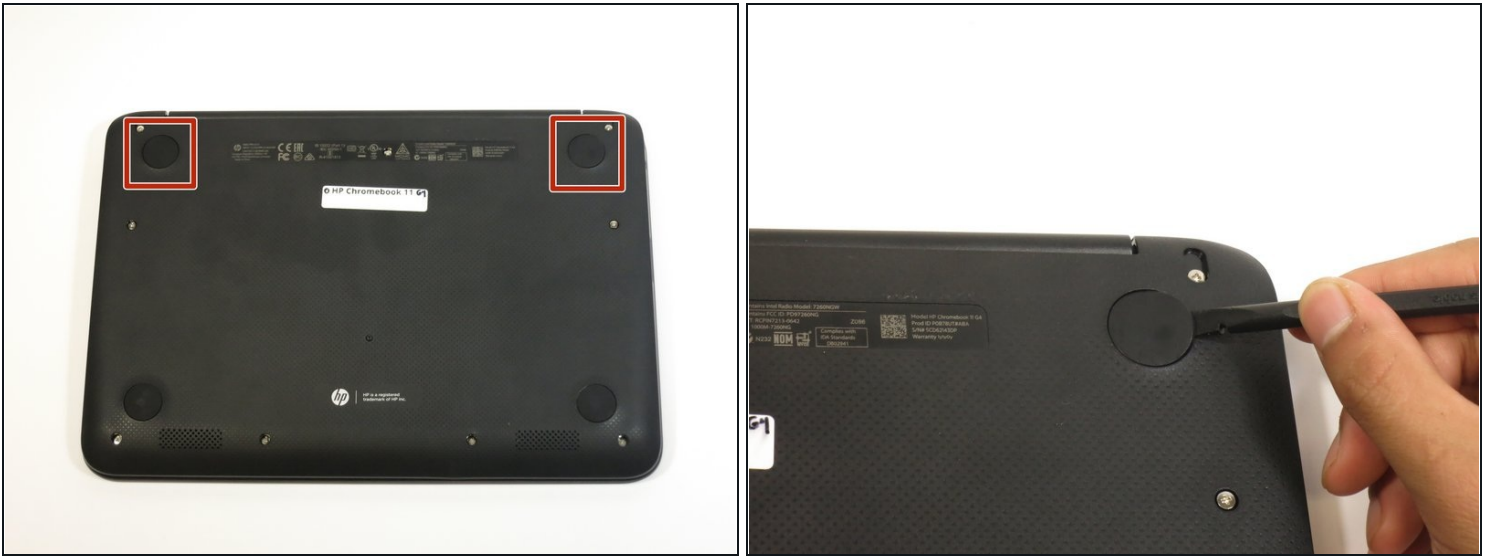
---

## Step 1 — Keyboard



- Position the closed Chromebook with the rubber pads are facing up.

## Step 2



- Slide the flat end of the spudger under the rubber pads at the upper right-hand and the upper left-hand corners.
- Pry off the rubber pads to reveal a screw under each pad.

⚠ The rubber pads are attached with a strong adhesive. The force applied may damage the pads.

## Step 3



- Remove the eleven 6mm Phillips #1 screws.

## Step 4



- Flip over the Chromebook and open it.

## Step 5



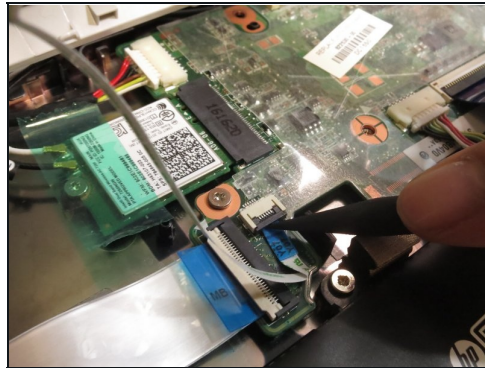
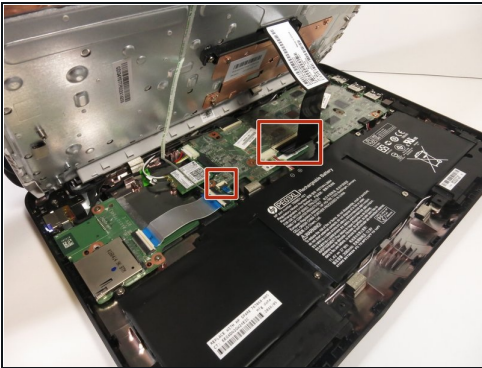
- Insert the flat end of the spudger between the bottom body of the Chromebook and keyboard body.
- Slide the spudger along the gap, applying downward pressure to separate the two components.
- ① You should hear popping sounds as you slide the spudger along the edge.
- ① If the spudger gets stuck while sliding, simply slide the spudger back for a bit, and continue sliding forward.

## Step 6



- Lift the bottom of the keyboard assembly to reveal the internal components of the device.

## Step 7



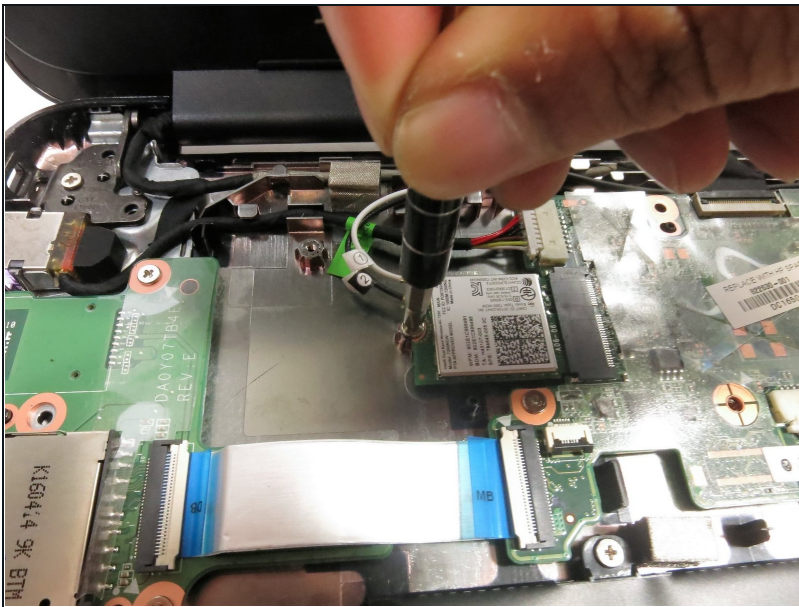
- Use the pointed end of the spudger to flip up the black tabs on the two ZIF connectors located on the motherboard.
- Disconnect the ribbon cables from the motherboard by gently sliding them out of their sockets.

## Step 8



- Remove the keyboard assembly by lifting it off the laptop base.

## Step 9 — Wi-Fi Card



- Remove the 4 mm Phillips #1 screw.

## Step 10



- Gently slide out the Wi-Fi card away from the motherboard by gripping the edges with your thumb and index finger.

## Step 11



- Pop off the white and black wires.
- ☒ The white and black wires have numbered tags on them. These numbers correspond to the numbers on the connection point of the Wi-Fi Card.

---

To reassemble your device, follow these instructions in reverse order.