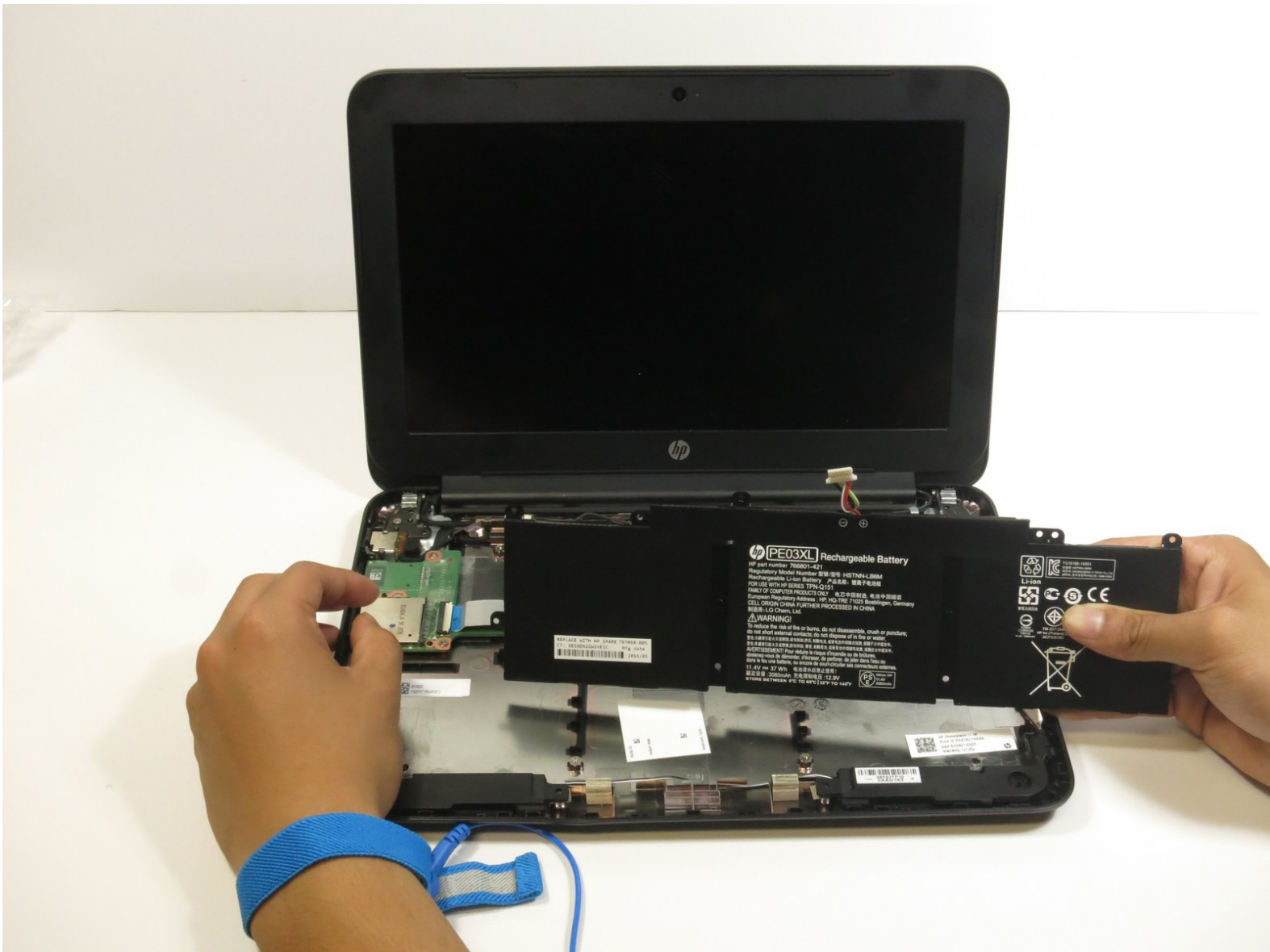




# HP Chromebook 11 G4 Battery Replacement

Replace the battery of the HP Chromebook 11 G4.

Written By: Christopher Flood



## INTRODUCTION

Sometimes it's necessary to replace a defective battery or remove it to test an AC adapter. This guide shows how to replace the battery of the HP Chromebook 11 G4.



### TOOLS:

- [Phillips #1 Screwdriver](#) (1)
- [Spudger](#) (1)



### PARTS:

- [HP Chromebook 11 G3/G4 Battery](#) (1)

## Step 1 — Keyboard




- Position the closed Chromebook with the rubber pads are facing up.

## Step 2



- Slide the flat end of the spudger under the rubber pads at the upper right-hand and the upper left-hand corners.
- Pry off the rubber pads to reveal a screw under each pad.

 The rubber pads are attached with a strong adhesive. The force applied may damage the pads.

This document was generated on 2020-11-21 04:17:42 PM (MST).

## Step 3



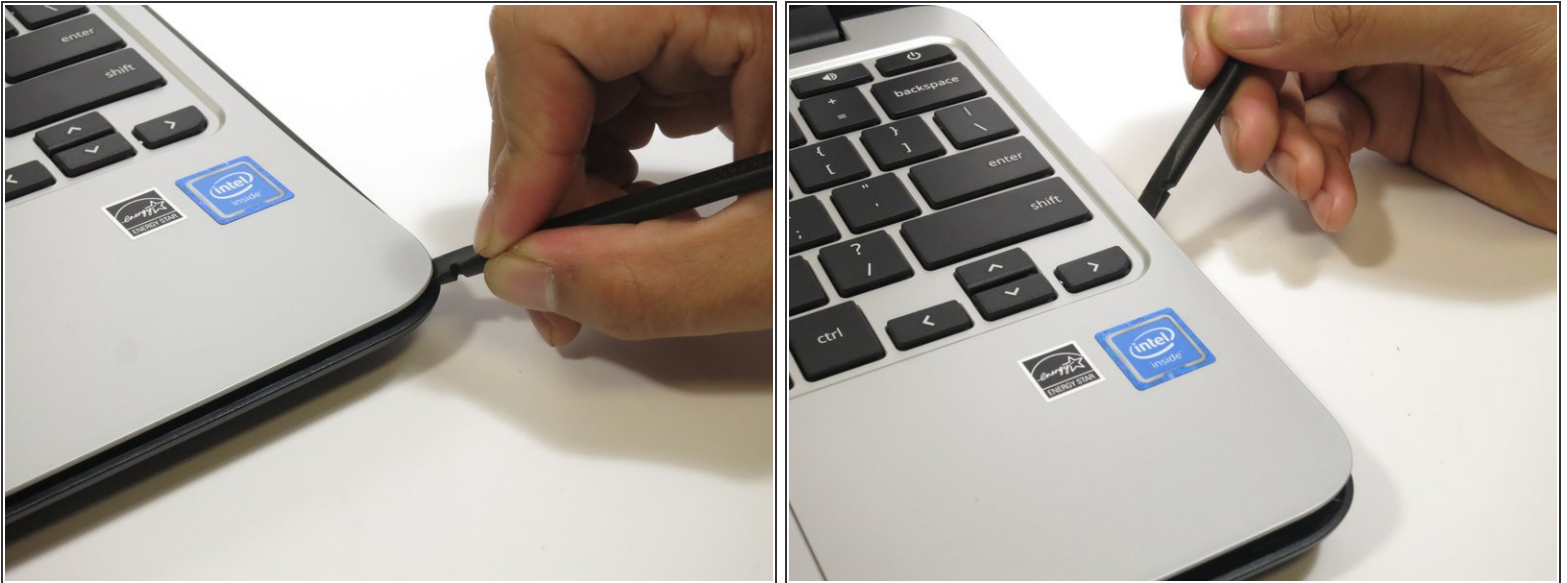
- Remove the eleven 6mm Phillips #1 screws.

## Step 4



- Flip over the Chromebook and open it.

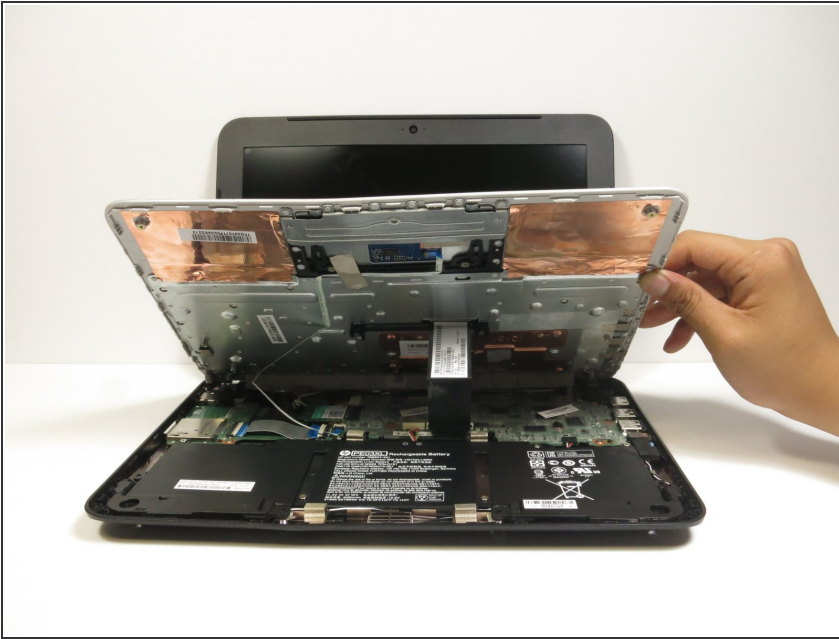
## Step 5



- Insert the flat end of the spudger between the bottom body of the Chromebook and keyboard body.
- Slide the spudger along the gap, applying downward pressure to separate the two components.
- ⓘ You should hear popping sounds as you slide the spudger along the edge.
- ⓘ If the spudger gets stuck while sliding, simply slide the spudger back for a bit, and continue sliding forward.

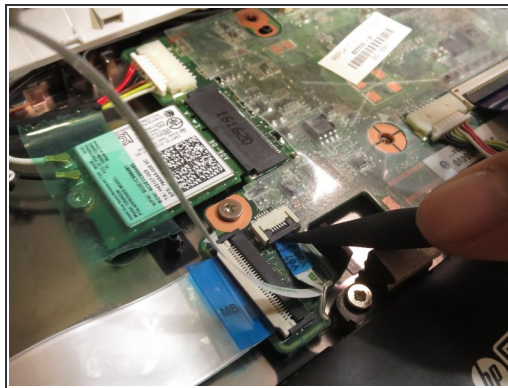
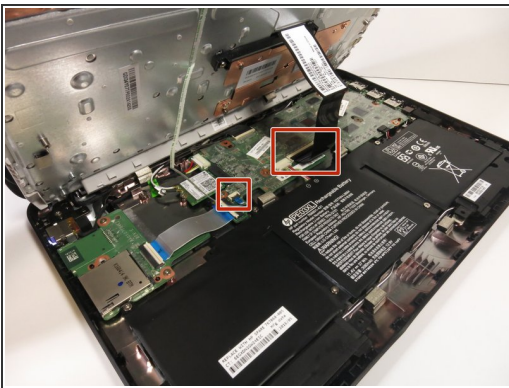


## Step 6



- Lift the bottom of the keyboard assembly to reveal the internal components of the device.

## Step 7



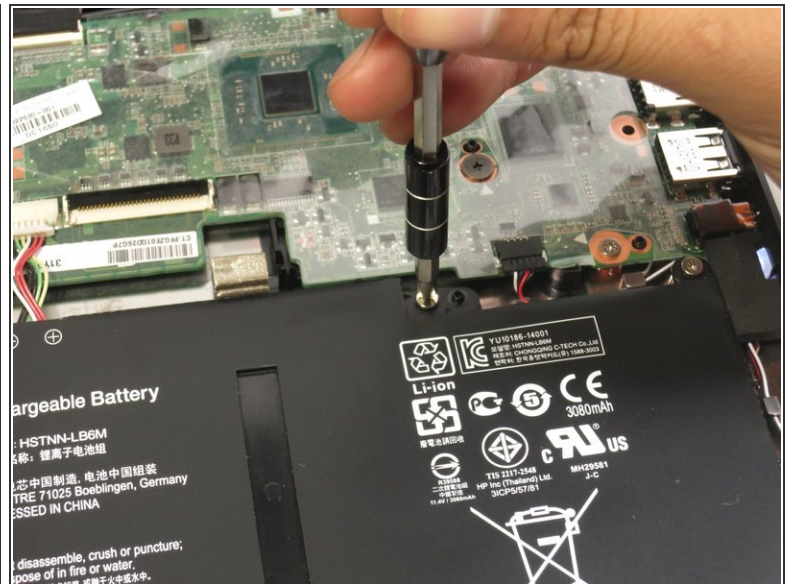
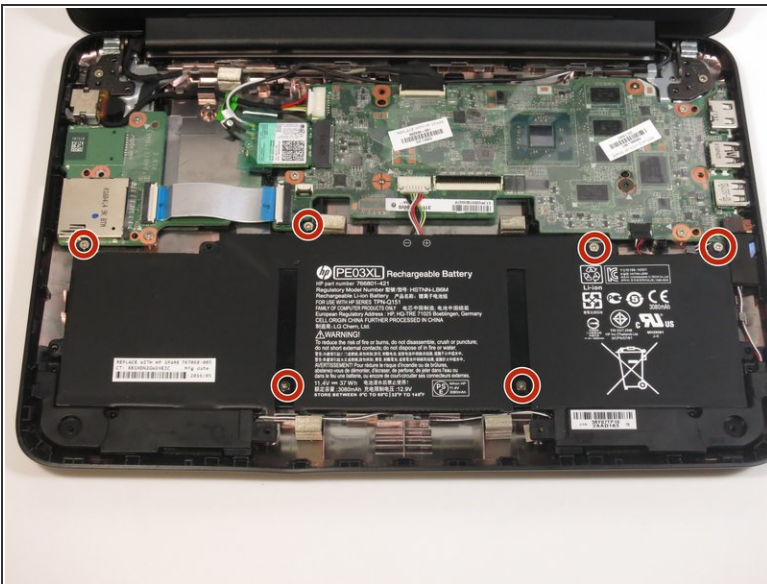
- Use the pointed end of the spudger to flip up the black tabs on the two ZIF connectors located on the motherboard.
- Disconnect the ribbon cables from the motherboard by gently sliding them out of their sockets.

## Step 8



- Remove the keyboard assembly by lifting it off the laptop base.

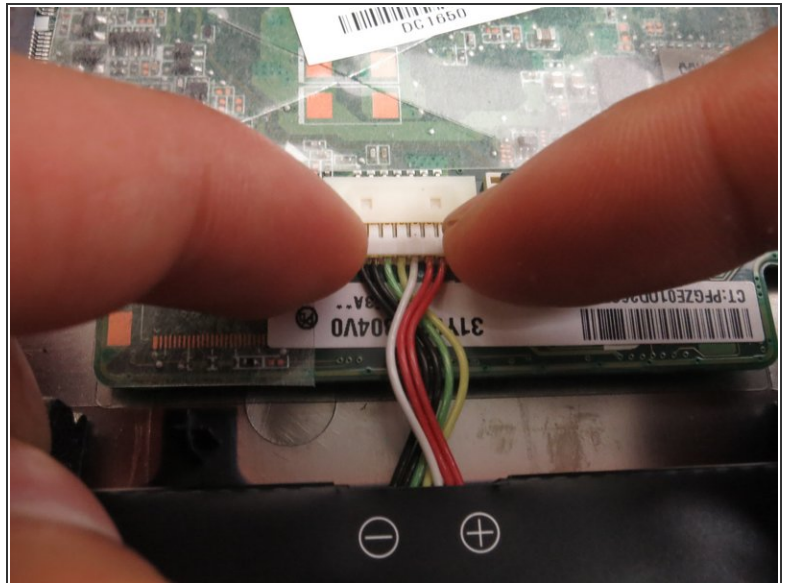
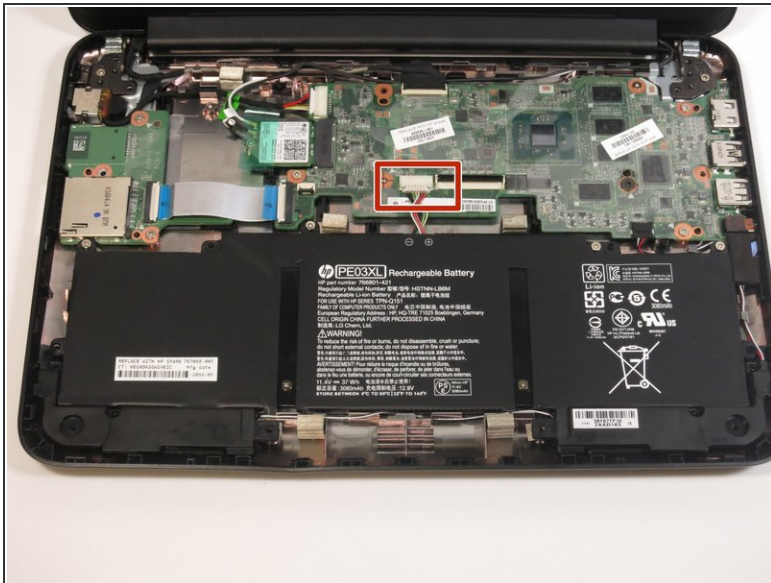
## Step 9 — Battery



- Remove the six 4mm Phillips #1 screws.



## Step 10



- Disconnect the bundled power cable by grasping both edges with your fingers and pulling.

## Step 11



- Lift the battery out of the laptop.

To reassemble your device, follow these instructions in reverse order.