



HP Chromebook 11 G3 Battery Replacement

Replace the battery of the HP Chromebook 11 G3.

Written By: Rahul Goyal



INTRODUCTION

This guide walks through replacing a faulty battery. It requires removing the keyboard mount. Afterwards, it is relatively simple and requires only a Phillips head screwdriver to finish removal.



TOOLS:

- [iFixit Opening Tools](#) (1)
- [Tweezers](#) (1)
- [Phillips #00 Screwdriver](#) (1)
- [Spudger](#) (1)



PARTS:

- [HP Chromebook 11 G3/G4 Battery](#) (1)

Step 1 — Keyboard Mount



- Flip the laptop upside down so that the lid lies flat on the table.
- Remove the nine 6mm Phillips #00 screws that line the border.

Step 2



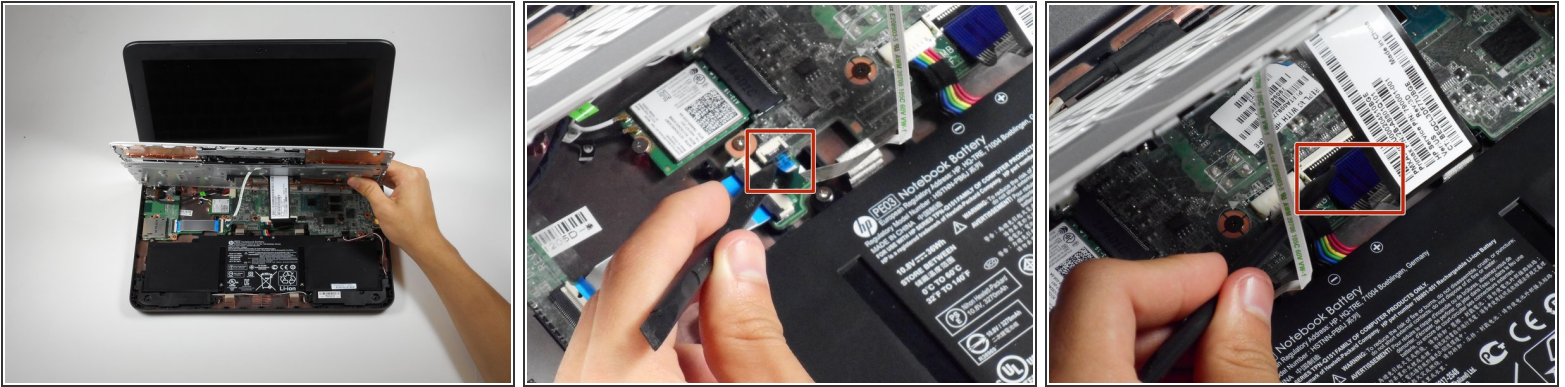
- Remove the two rubber feet closest to the hinge using tweezers.
- Remove the two 6mm Phillips #00 screws revealed under these rubber feet.
- i* The rubber feet may tear while removal; preventing this can be difficult, but it won't harm the laptop. If desired, replace these rubber feet during reassembly.

Step 3



- Flip the laptop so it is in the upright position.
- Open the lid.
- Unsnap the keyboard mount along the border of the laptop using a plastic opening tool.
- i* This may require more force than expected. Hearing loud clicks as the plastic opening tool slides along the seam is normal.

Step 4



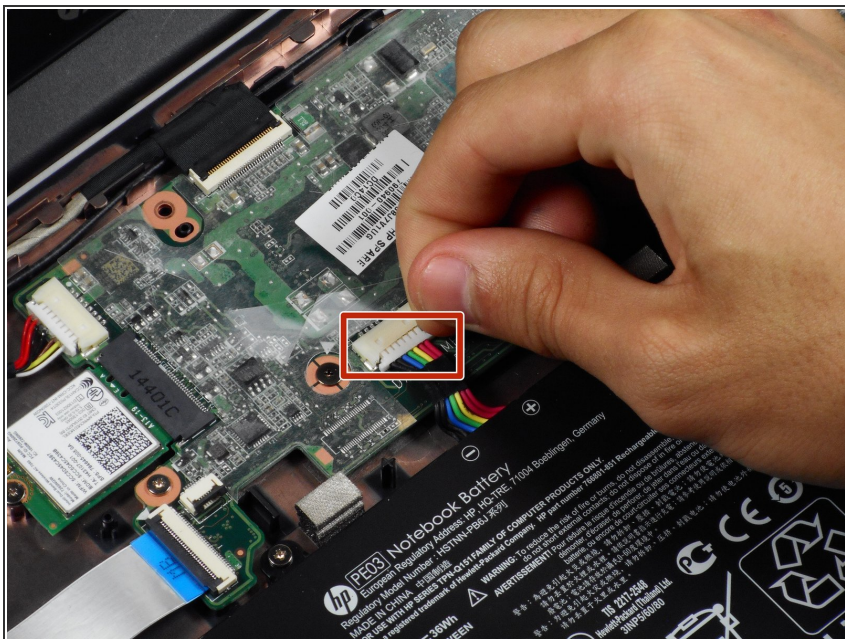
- Tilt the keyboard mount up.
- Use a spudger to flip up the two ZIF connector retaining flaps for the ribbon cables that connect the keyboard mount to the motherboard.
- Gently remove both ribbon cables.

Step 5



- Lift the keyboard mount out of the laptop.

Step 6 — Battery



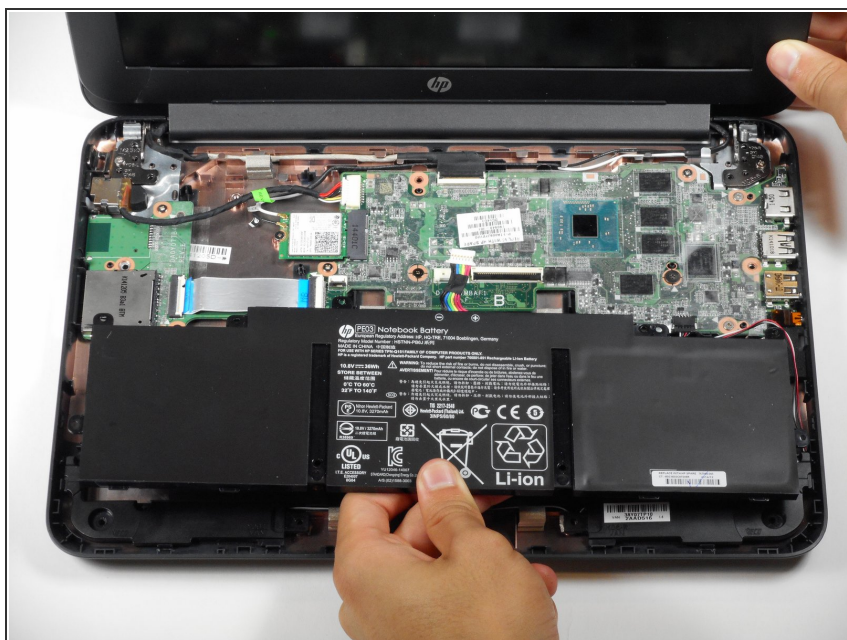
- Gently remove the battery's rainbow-colored bundled cable from the motherboard.

Step 7



- Remove the six 4 mm Phillips #00 screws located along the perimeter of the battery.

Step 8



- Lift out the battery.
- ⓘ The laptop may tip backwards onto its lid due to uneven weight distribution.

To reassemble your device, follow these instructions in reverse order.