



Sony Alpha A3000 shutter button Replacement

Shutter button is an double action microswitch available in the internet. In my case, before fix, autofocus and all menu buttons were not functioning at all

Written By: Andrzej Majchrzak



INTRODUCTION

My camera was auto focusing only after power-up, all menu buttons were not active (there was a workaround of switching camera mode e.g. A->P to enter the main menu). Taking photos was still possible.

That were results of stucked first action circuit of the shutter button: camera was constantly detecting slight press of the button leading to that strange behaviour.

Hopefully I found the microswitch replacement at mouser. Costs only ~2Euro and is fully compatible or even same as used in factory.

Ifixit helped me with disassembly, now I'm paying off describing this guide.



TOOLS:

- [Soldering Iron](#) (1)



PARTS:

- [ALPS SKSDPCE010](#) (1)

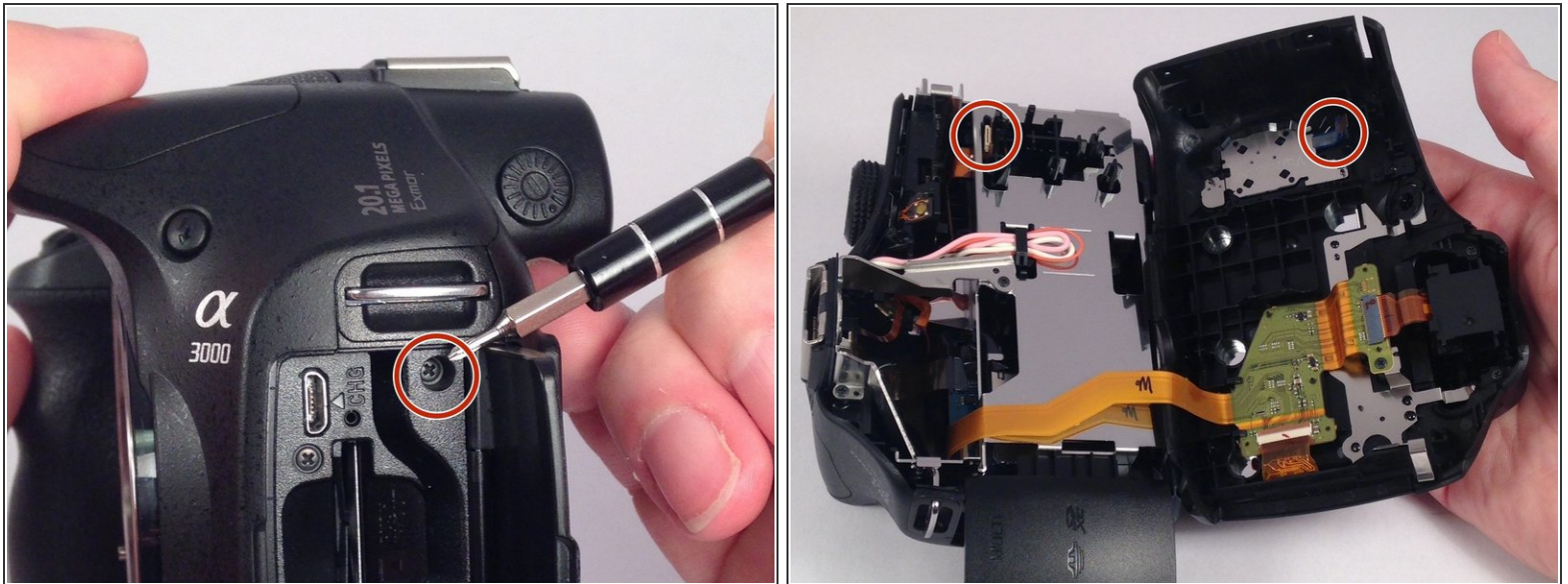
Step 1 — Rear Case



- Remove the seven highlighted screws shown here.

⚠ Screws are teeny tiny, don't lose them!

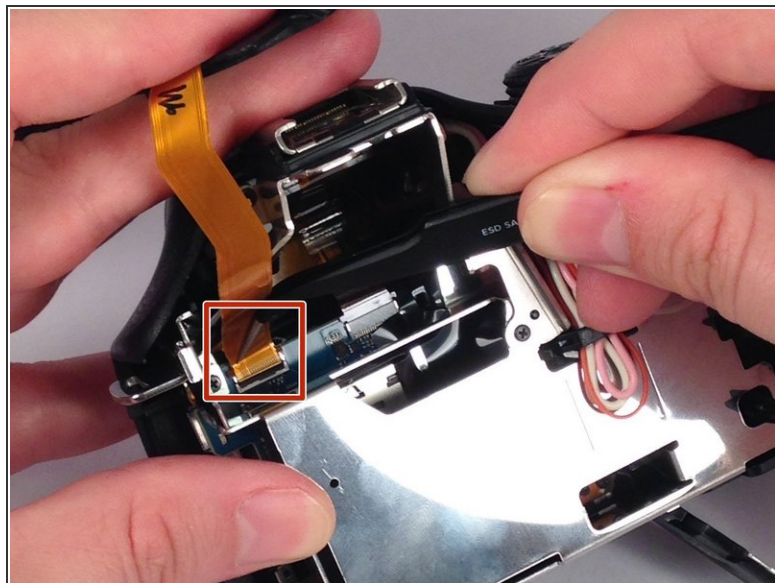
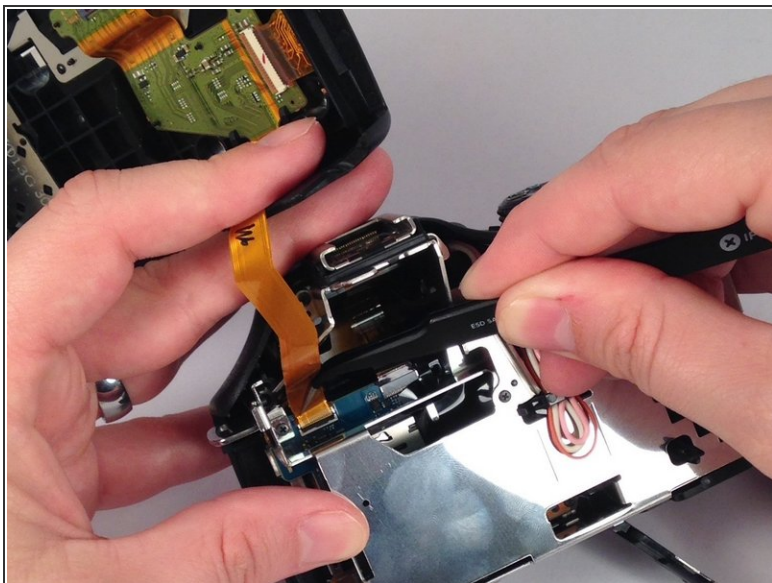
Step 2



- Remove this final screw from the memory card compartment.
- Remove the chassis by pulling the back cover away from the camera.

⚠ Be careful not to damage any of the delicate ribbon cables when removing the chassis.

Step 3



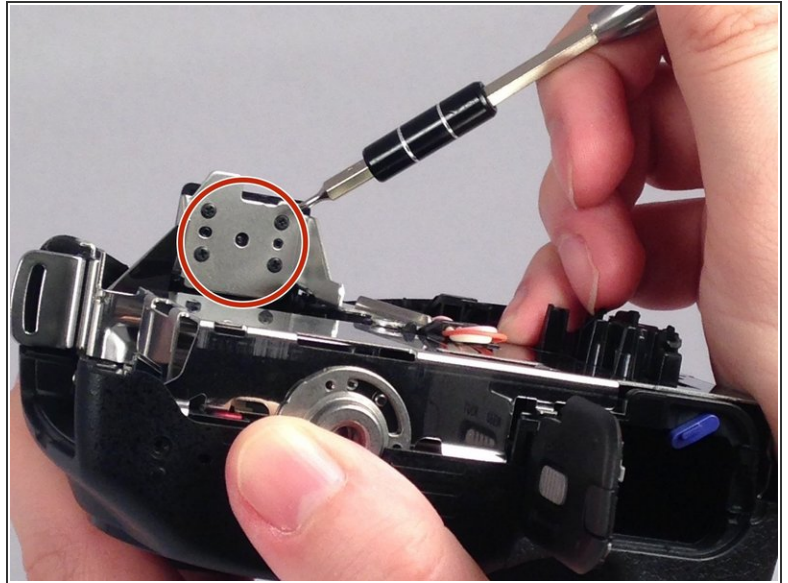
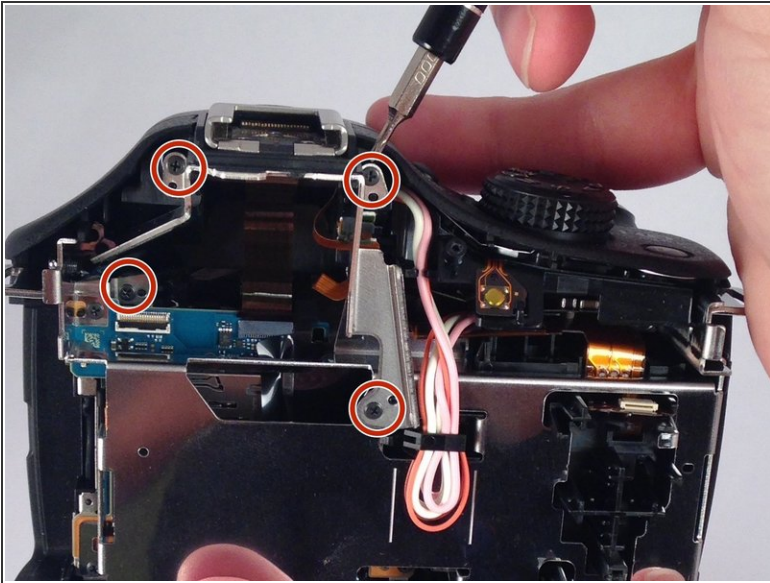
- Gently but forcefully lift up on the parallel cable connecting the two halves of the camera.

Step 4 — Motherboard



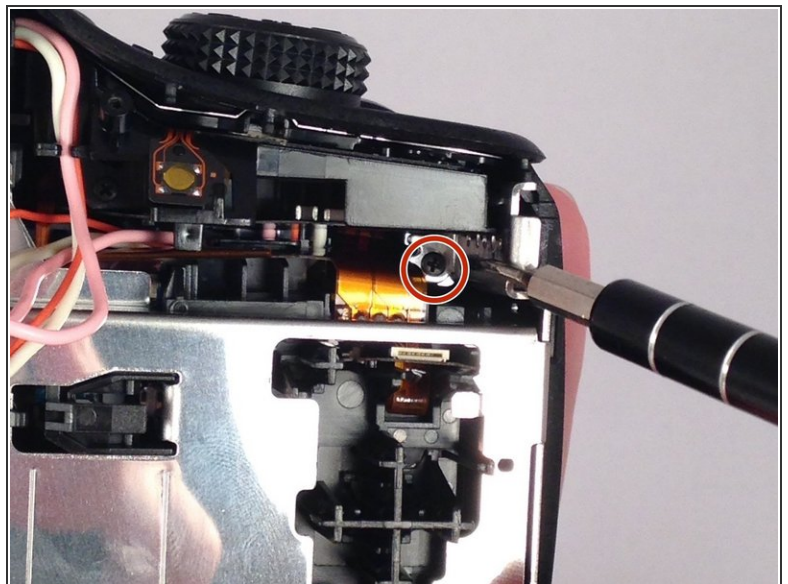
- After removing the backing from the camera. Remove the two final screws in the memory compartment area.
- Detach the facing for the memory dock.

Step 5



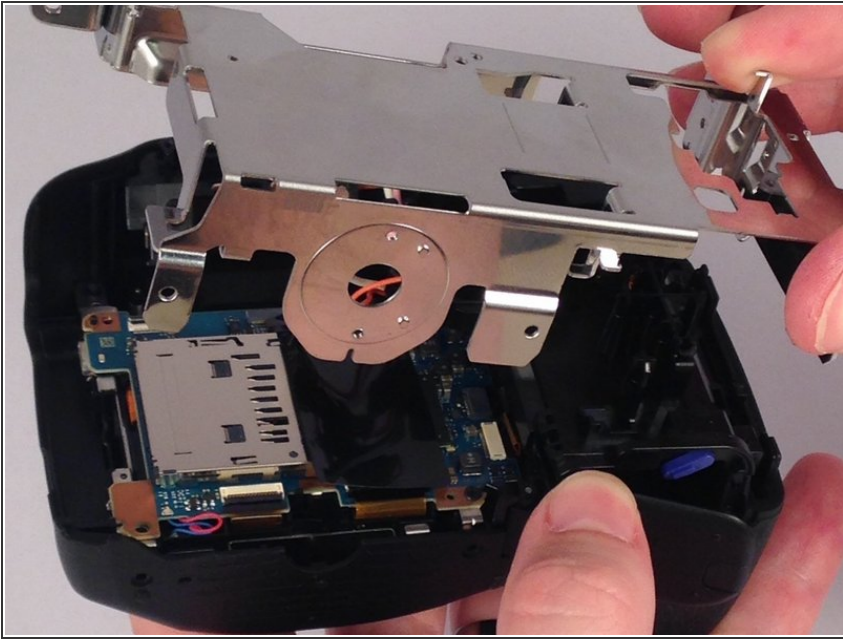
- Remove the eight screws securing the mount for the flash device.

Step 6



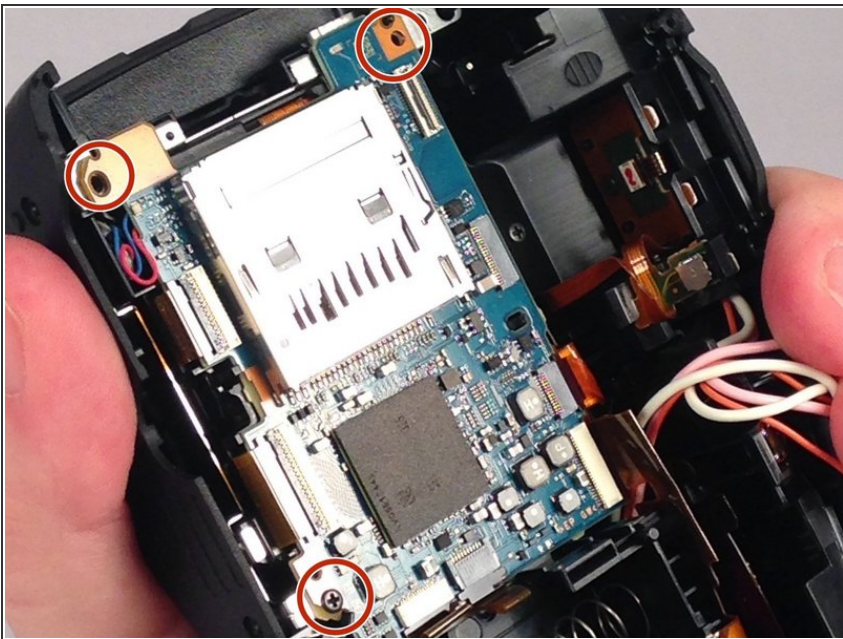
- Remove the three remaining screws holding in the protective metal casing.

Step 7



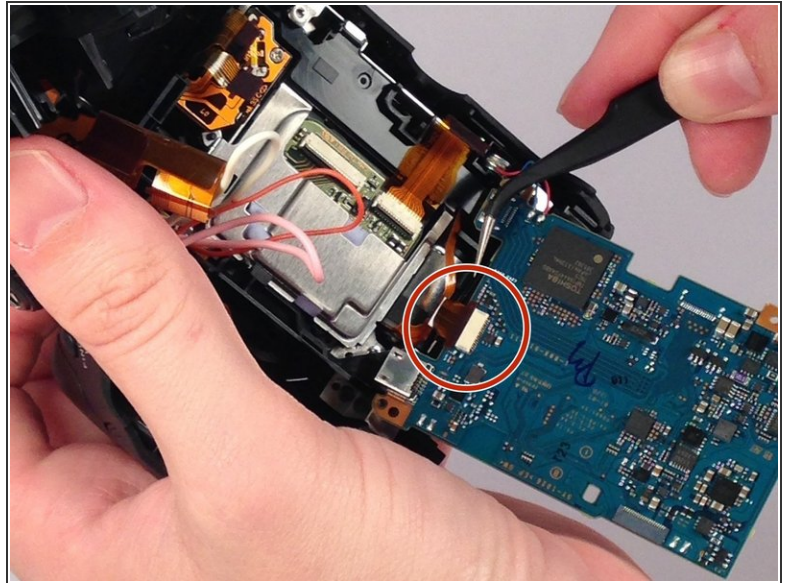
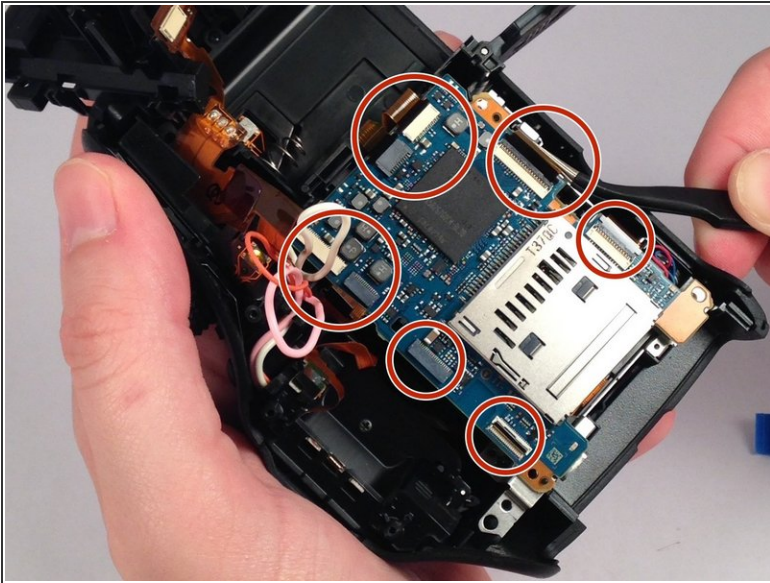
- Remove the metal casing.

Step 8



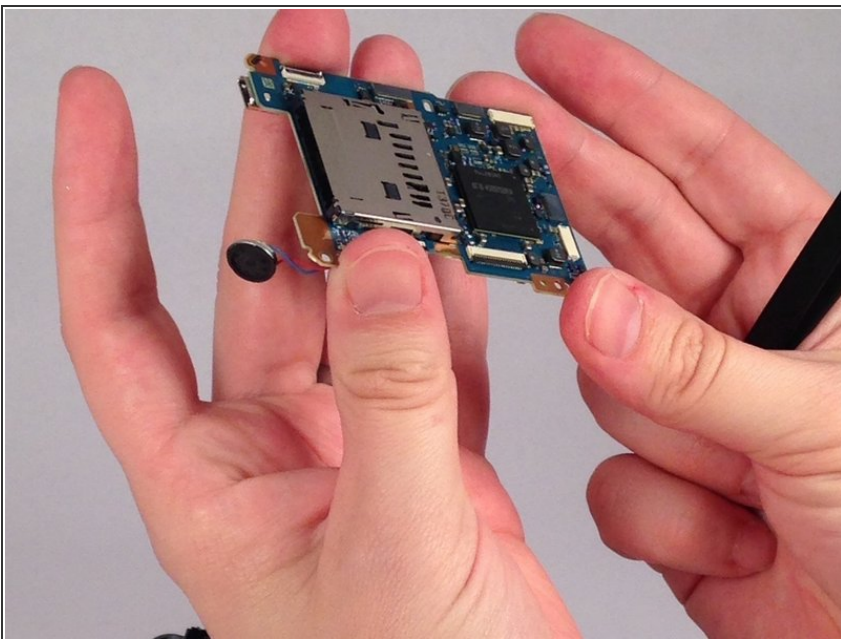
- Remove three screws holding down the motherboard .

Step 9



- Detach the nine serial cables connecting it to the camera body.

Step 10



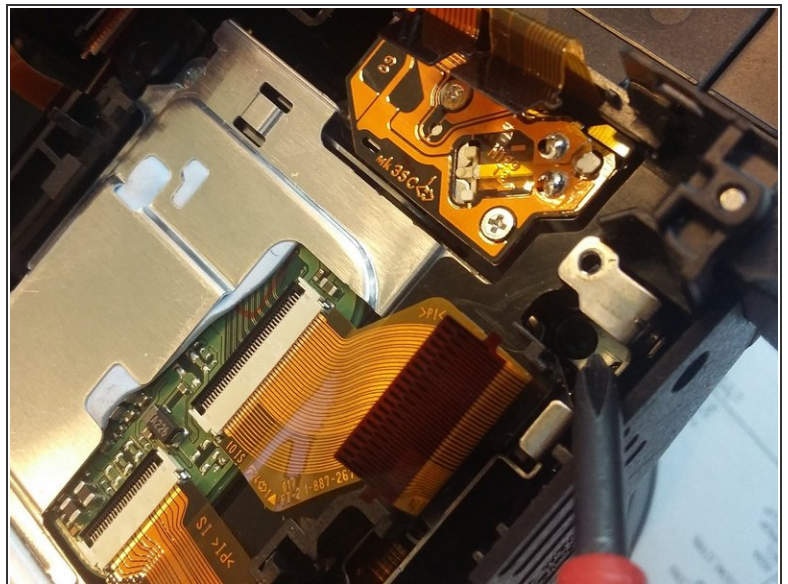
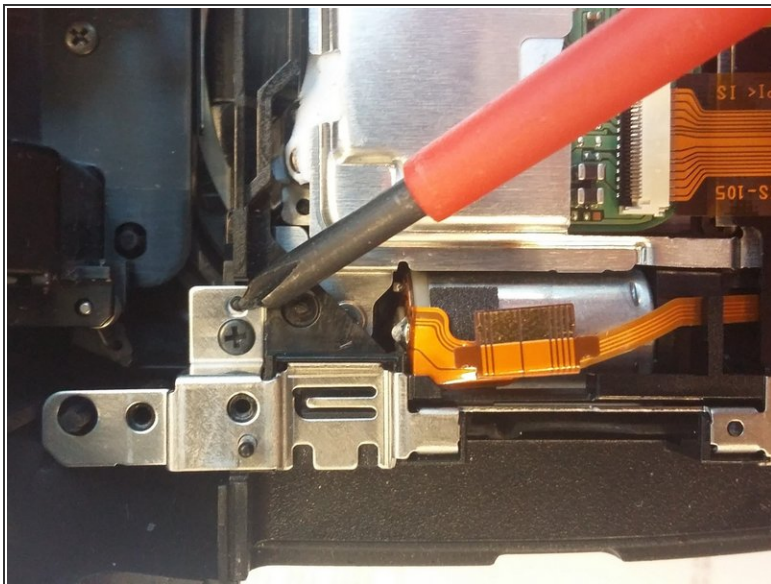
- Finally remove the motherboard from the casing.

Step 11 — ...



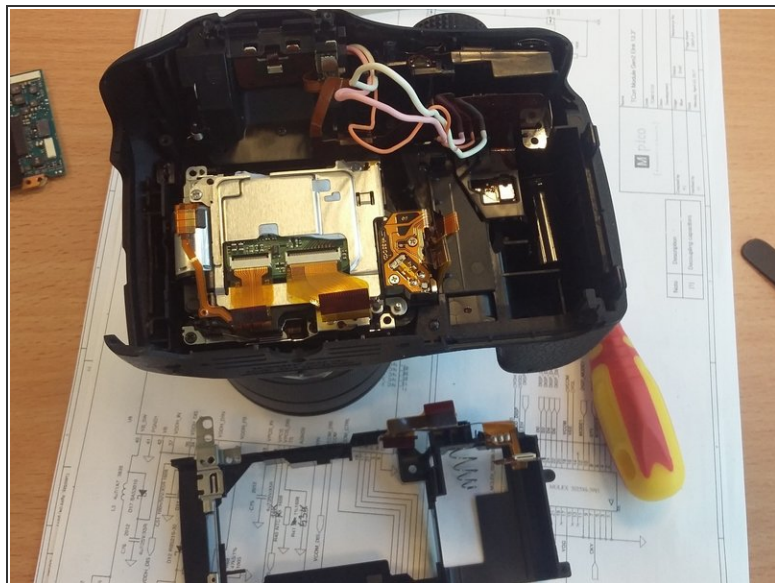
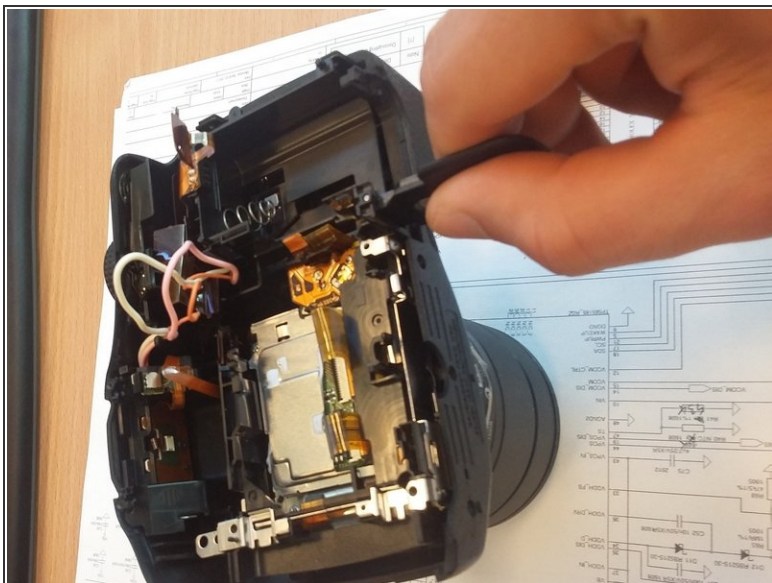
- shutter button placement...

Step 12 — Unscrew motherboard frame



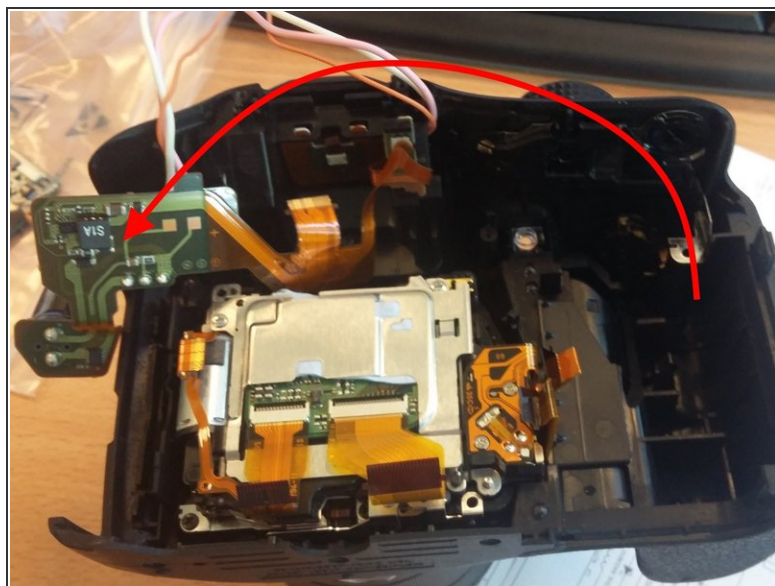
- Remove two screws holding plastic/metal frame.

Step 13 — Remove motherboard frame



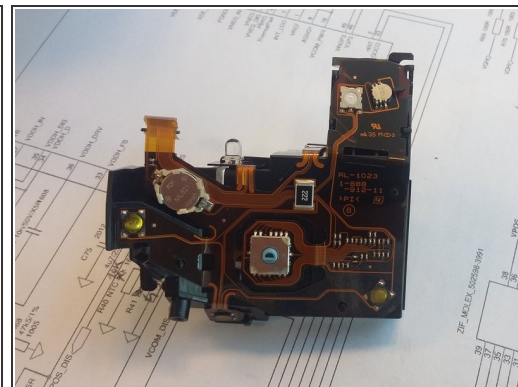
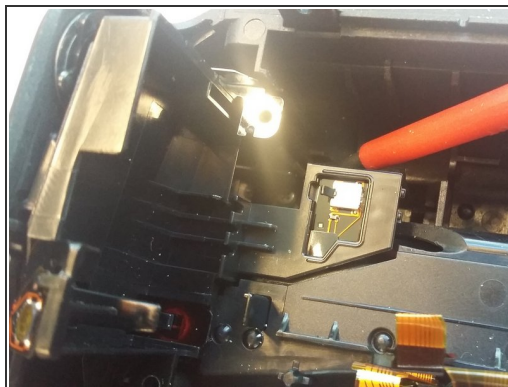
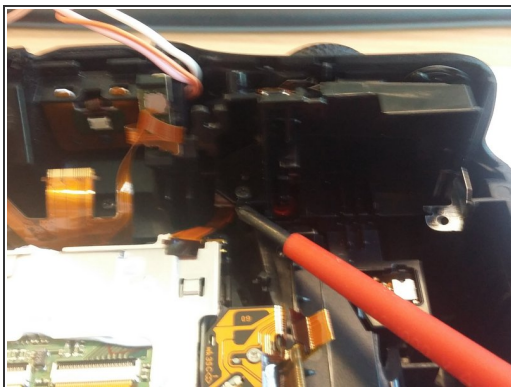
- Holding the battery door gently lift the frame up .

Step 14 — Capacitor module



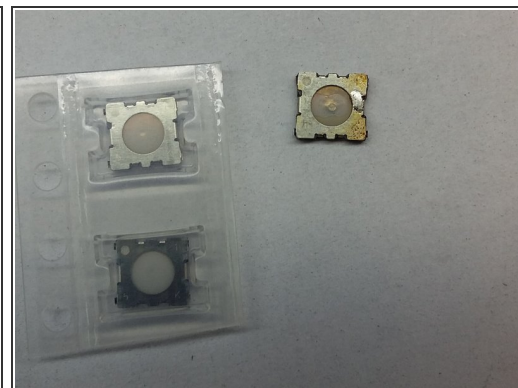
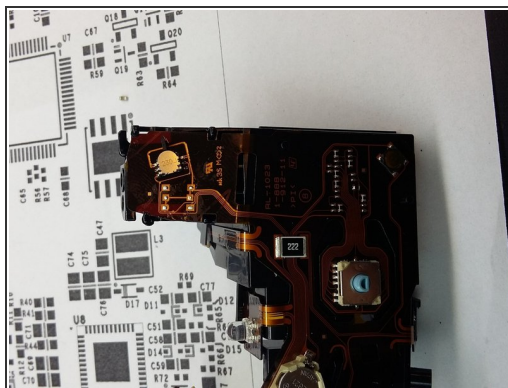
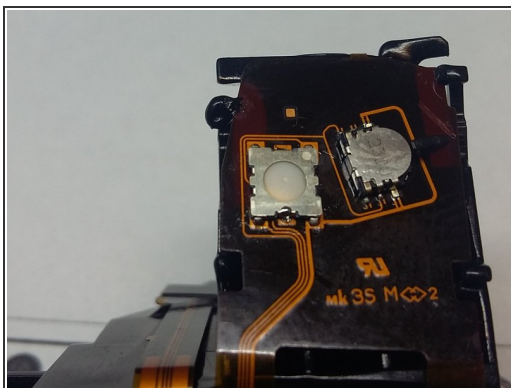
- Pull out the capacitor and move the capacitor board (flexible) to the left to clear the way for future steps.

Step 15 — Remove buttons module



- Remove two screws mounting plastic buttons module.
- Remove the module.

Step 16 — Soldering!



- Replace the ALPS SKSDPCE010 microswitch. Look out for the correct alignment and orientation (first pin marked with a dot).

To reassemble your device, follow these instructions in reverse order.