



Dell Inspiron 14-5447 Keyboard Replacement

Replacing your keyboard should eliminate any malfunctioning or unresponsive keys.

Written By: Miguel Vargas



INTRODUCTION

Remember, turning off your device and removing it from any power source before you start repairs is important for your safety to prevent any electrical shock. Tools included in the repair include a plastic prying tool and if needed a tweezer to disconnect the cables attached to the keyboard.



TOOLS:

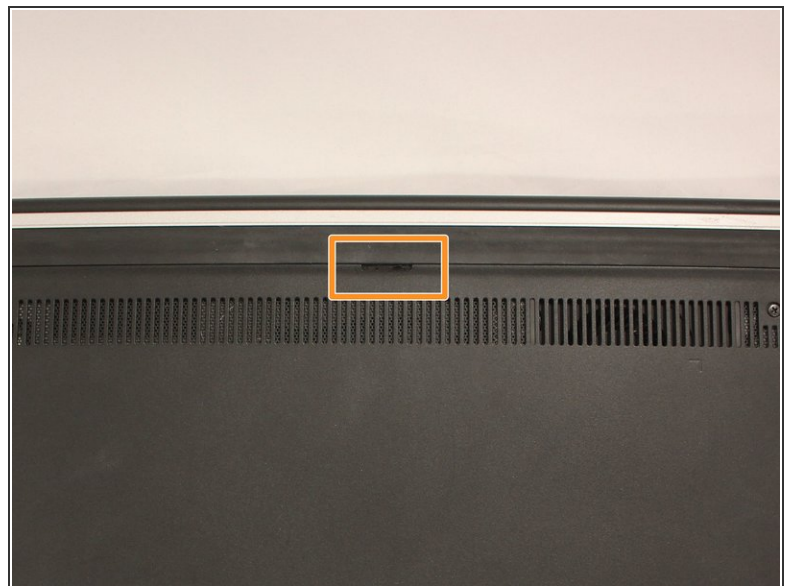
- [Phillips #0 Screwdriver](#) (1)
 - [iFixit Opening Tool](#) (1)
 - [Tweezers](#) (1)
 - [Spudger](#) (1)
-

Step 1 — Battery



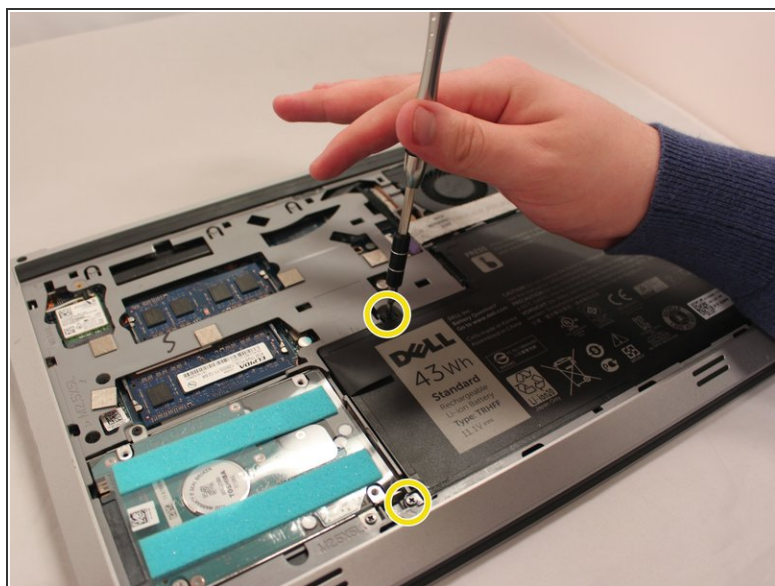
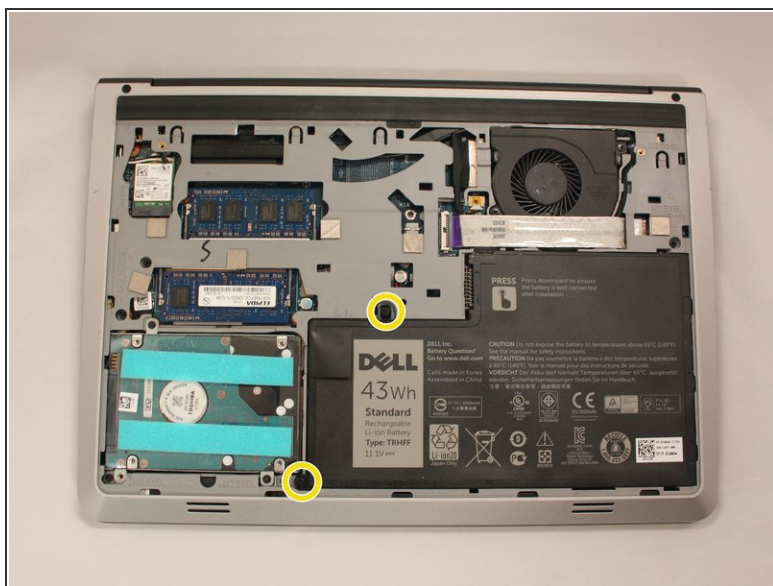
- Flip the laptop upside down to access the battery.

Step 2



- Remove the two black 5.70mm Phillips#0 screws on the case's back.
- Insert a plastic opening tool into the small slit, centered between the removed screws, and pry open the back cover

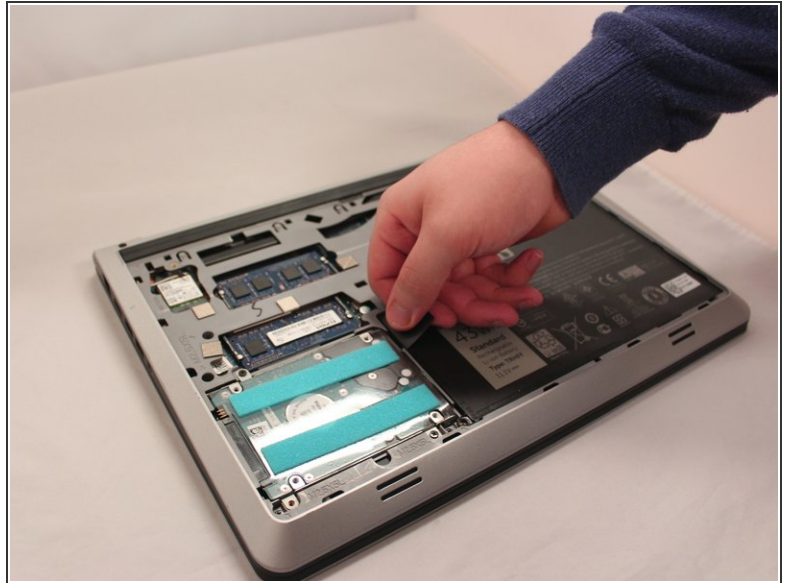
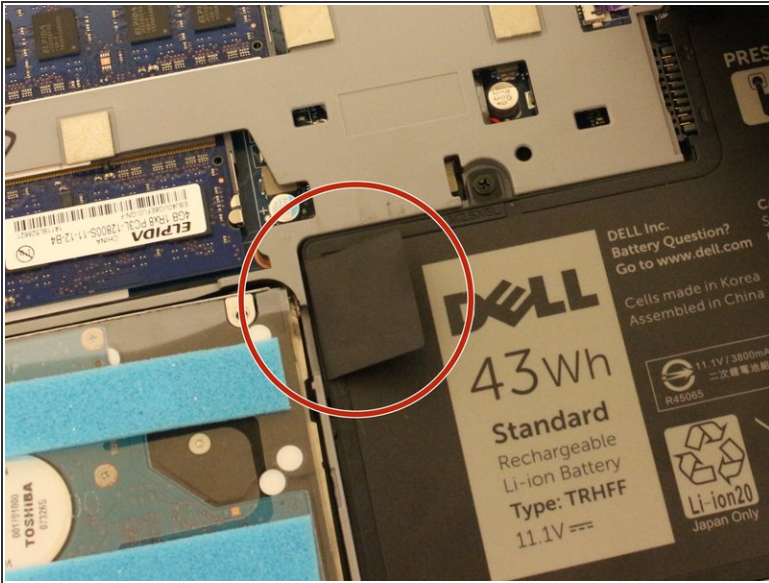
Step 3



- Remove the two 5.70mm Phillips #0 screws that secure the battery in place on its left side .

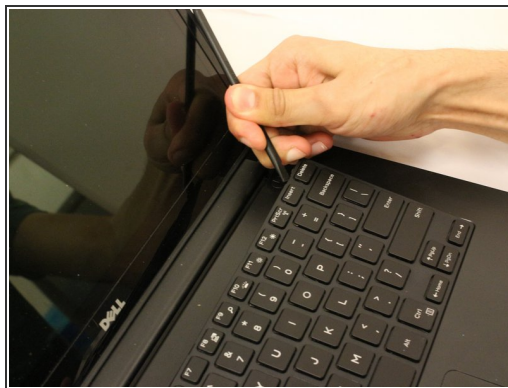
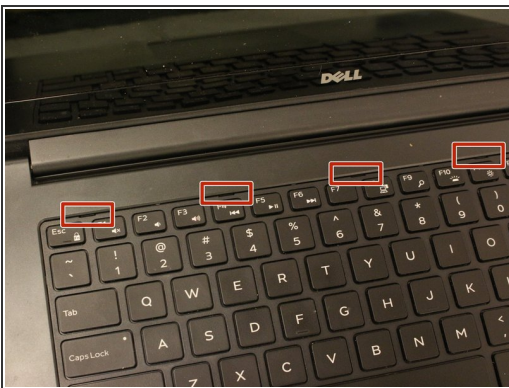
⚠ Treat the battery with care - puncturing or bending may cause damage to the battery and may result in fire or injury.

Step 4



- Use the black, plastic flap on the left side to pull the battery out.
- Slowly lift the flap up and the battery should slide out.

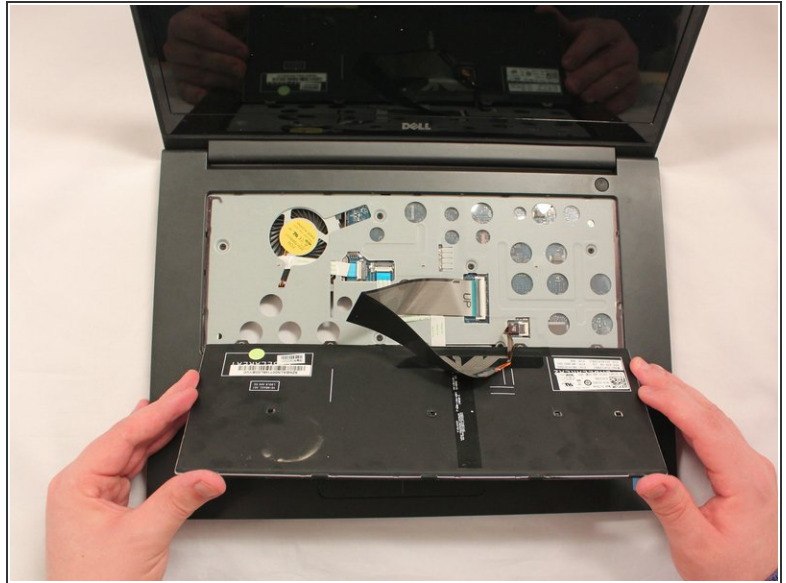
Step 5 — Keyboard



- Locate the five small slits at the top of the keyboard.
- Using a plastic opening tool, carefully pry each slit to loosen the keyboard.
- Slide the keyboard towards the screen at an angle for removal.

⚠ Be cautious when lifting the keyboard because there are secured, fragile wires connected underneath it.

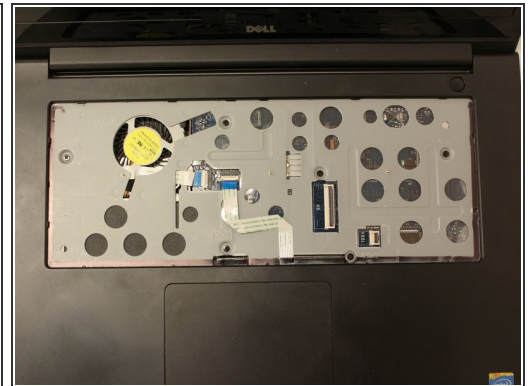
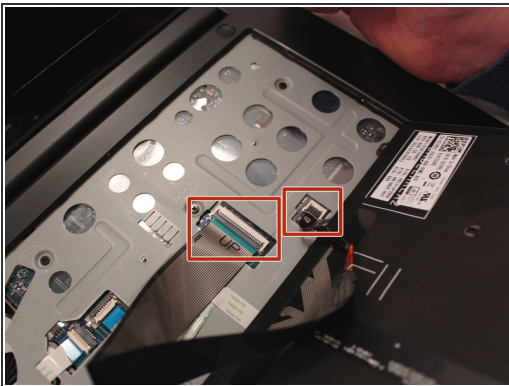
Step 6



i If the keyboard is not lifted with caution, damage to the cables may occur.

- Lift the keyboard and flip it onto the mouse-pad.

Step 7



- Locate the two cable connectors. These connectors secure the cables to the laptop with small, securing flaps.
- To release the cables, take each flap and flip them upwards to the unlocking position.
- Pull both the cables out after unlocking and set aside the keyboard.

To reassemble your device, follow these instructions in reverse order.