



ASUS Chromebook C200MA DS01

Motherboard Replacement

Asus Chromebook C200ma motherboard replacement

Written By: Christopher Lim



INTRODUCTION

This guide will take you through a step-by-step process for the removal of your Chromebook's motherboard.




TOOLS:

- [iFixit Opening Tools](#) (1)
 - [Phillips #0 Screwdriver](#) (1)
 - [Spudger](#) (1)
-

Step 1 — Back Panel



 Before proceeding, power down your Chromebook. Close the display and lay it on a soft surface, top-side down.

- Remove the five 8.4 mm Phillips #0 screws.
- Remove the four 4.6 mm Phillips #0 screws.

Step 2



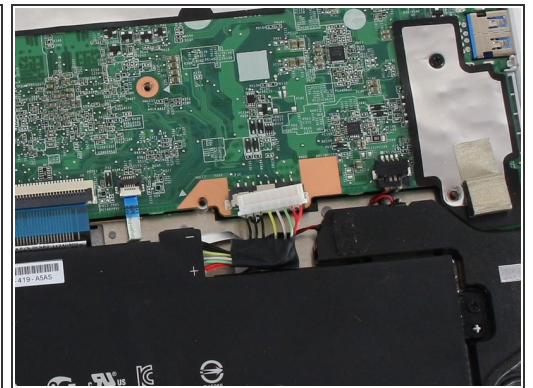
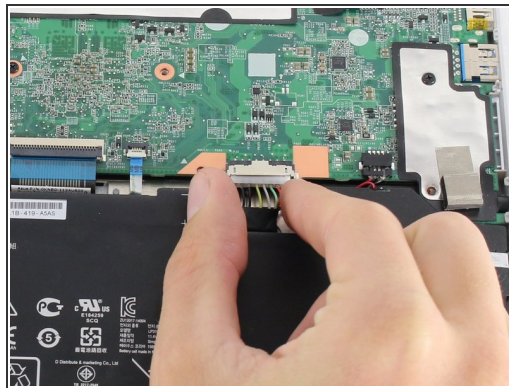
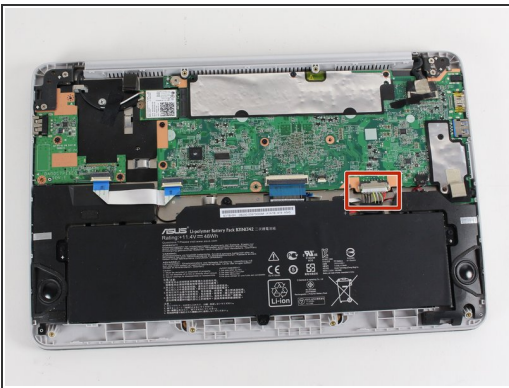
- Use the plastic opening tool to gently work around the edge of the Chromebook until the back panel starts to lift off.

Step 3



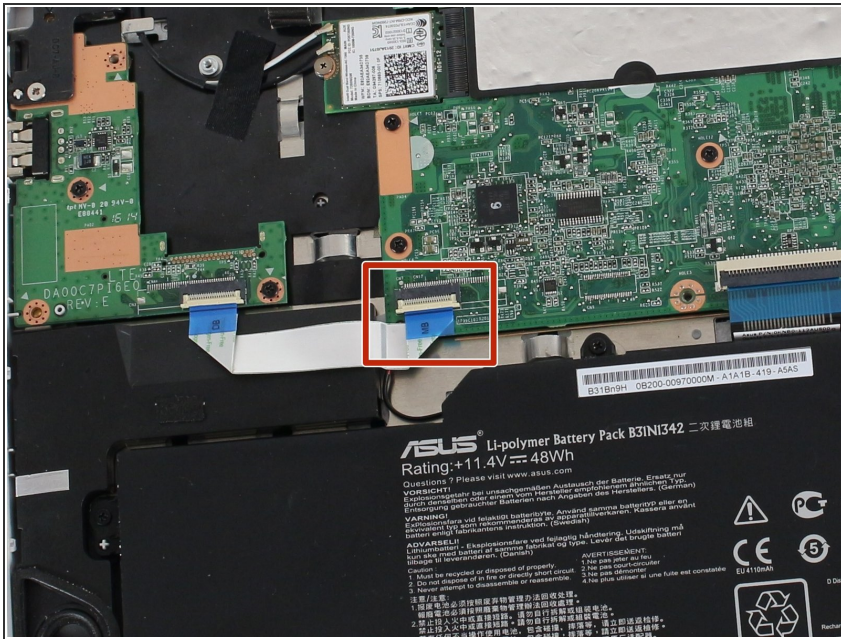
- Remove the back panel by lifting it away from the Chromebook.
- ❗ Some clicking will be heard as the panel is removed from the back, this is completely normal.

Step 4 — Battery Connection



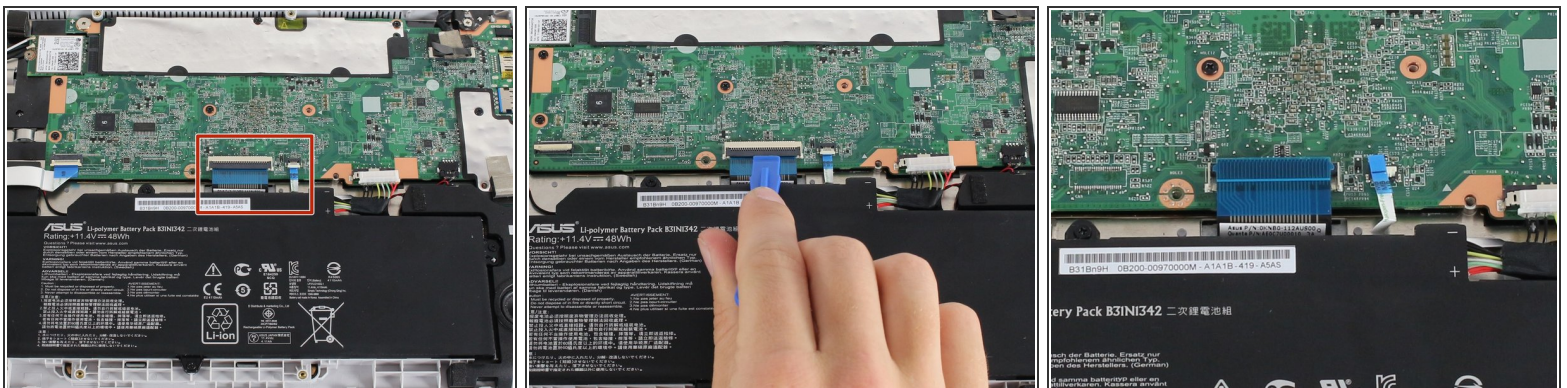
- To disconnect the battery, pinch the multi-color bundle cable with your thumb and forefinger and pull directly back.

Step 5 — Motherboard



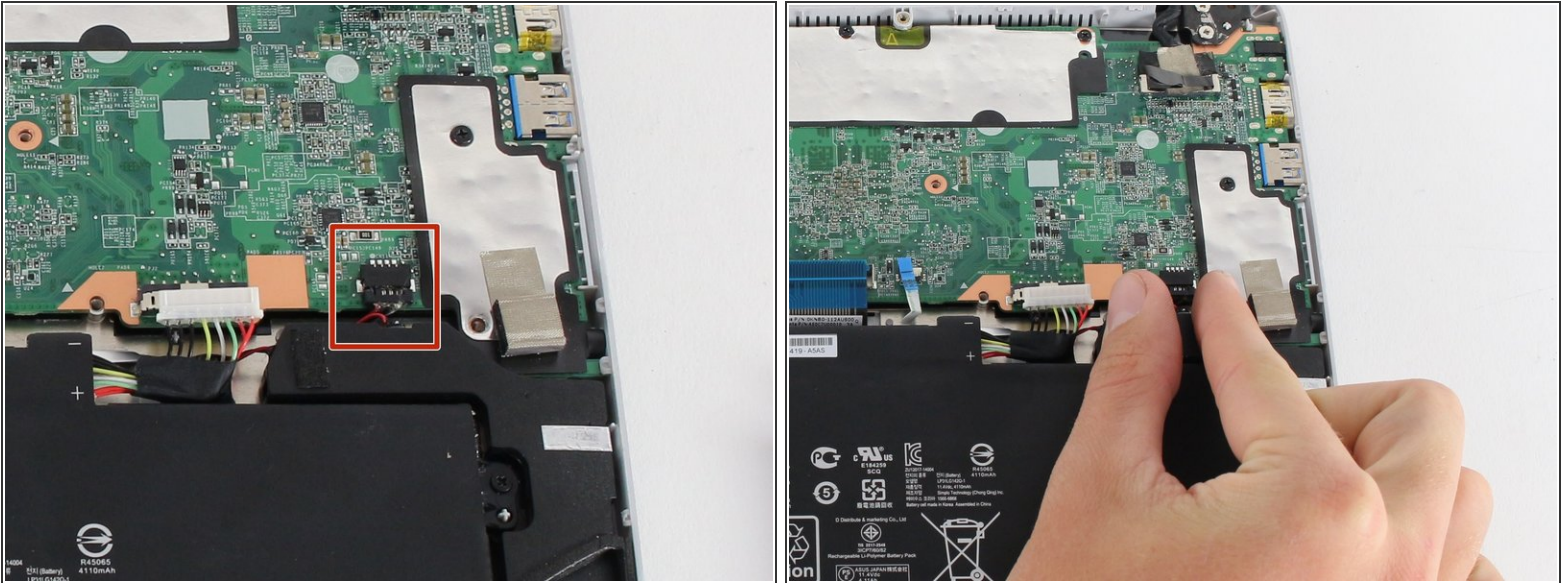
- Disconnect the USB board ZIF (zero insertion force) connector located towards the bottom left of the motherboard.
- Flip the ZIF connector retaining flap up using either a spudger or your fingers.
- Pull gently on the ribbon cable to disconnect it from the motherboard.

Step 6



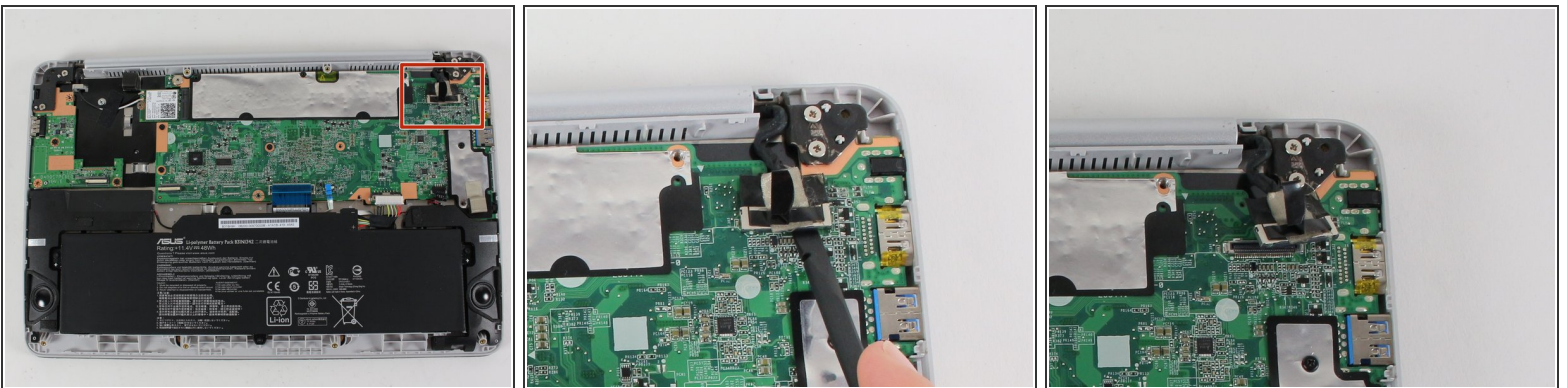
- Disconnect the large keyboard and small touchpad ZIF connectors, both located in the middle of the bottom edge of the motherboard.
- Flip both ZIF retaining flaps up using either a spudger or your fingers.
- Gently pull on each ribbon cable to disconnect them from the motherboard.

Step 7



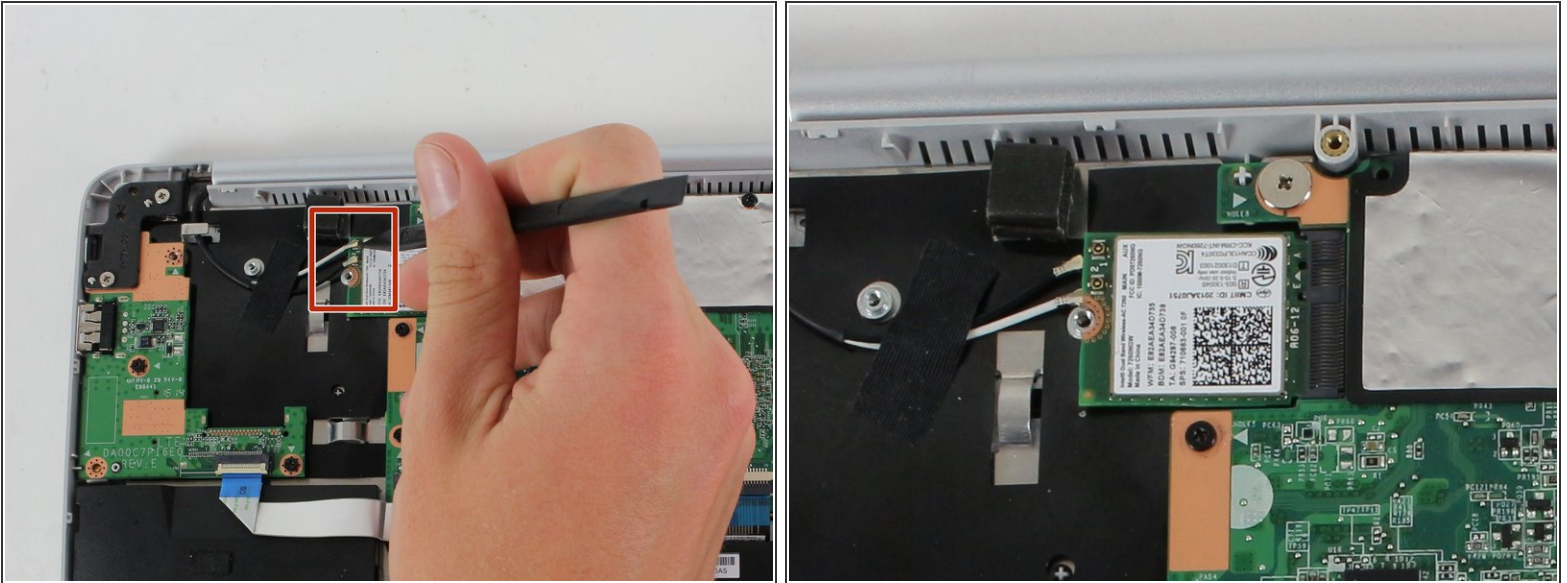
- Disconnect the speaker's black bundled cable connector (the cable is white, black and red).
- Pinch the black bundled cable connector between your thumb and pointer finger and pull.

Step 8



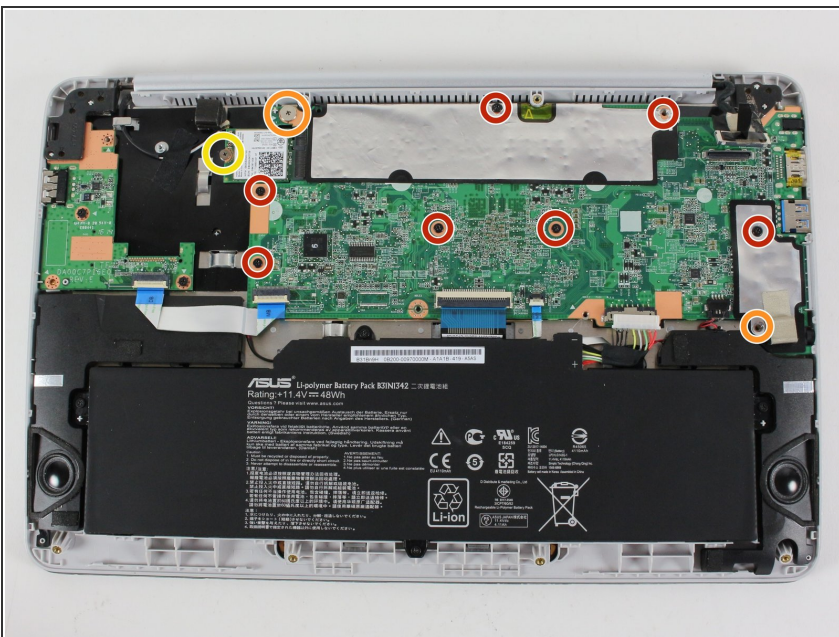
- Disconnect the screen cable connector located towards the top right of the motherboard.
- Using a spudger, gently pry up the sides of the connector.
- Pull off the connector with your hands.

Step 9



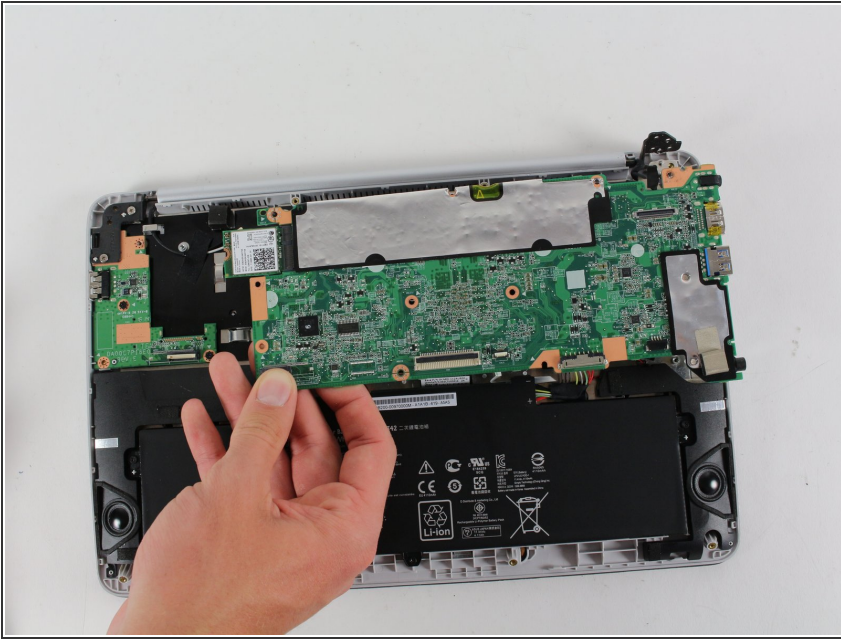
- Disconnect the black and white antenna cable connectors for the WiFi card. The connectors look like small buttons on the ends of colored wires.
- Gently pry the cable connectors off with your fingers or a spudger.
- ⓘ These connections are button-like and will have a little resistance when removing.

Step 10



- Remove the eight Phillips #0 4.7 mm screws.
- Remove the Phillips #0 3.7 mm screw.
- Remove the Phillips #0 2.8 mm screw.

Step 11



- Lift the motherboard from the Chromebook.

To reassemble your device, follow these instructions in reverse order.