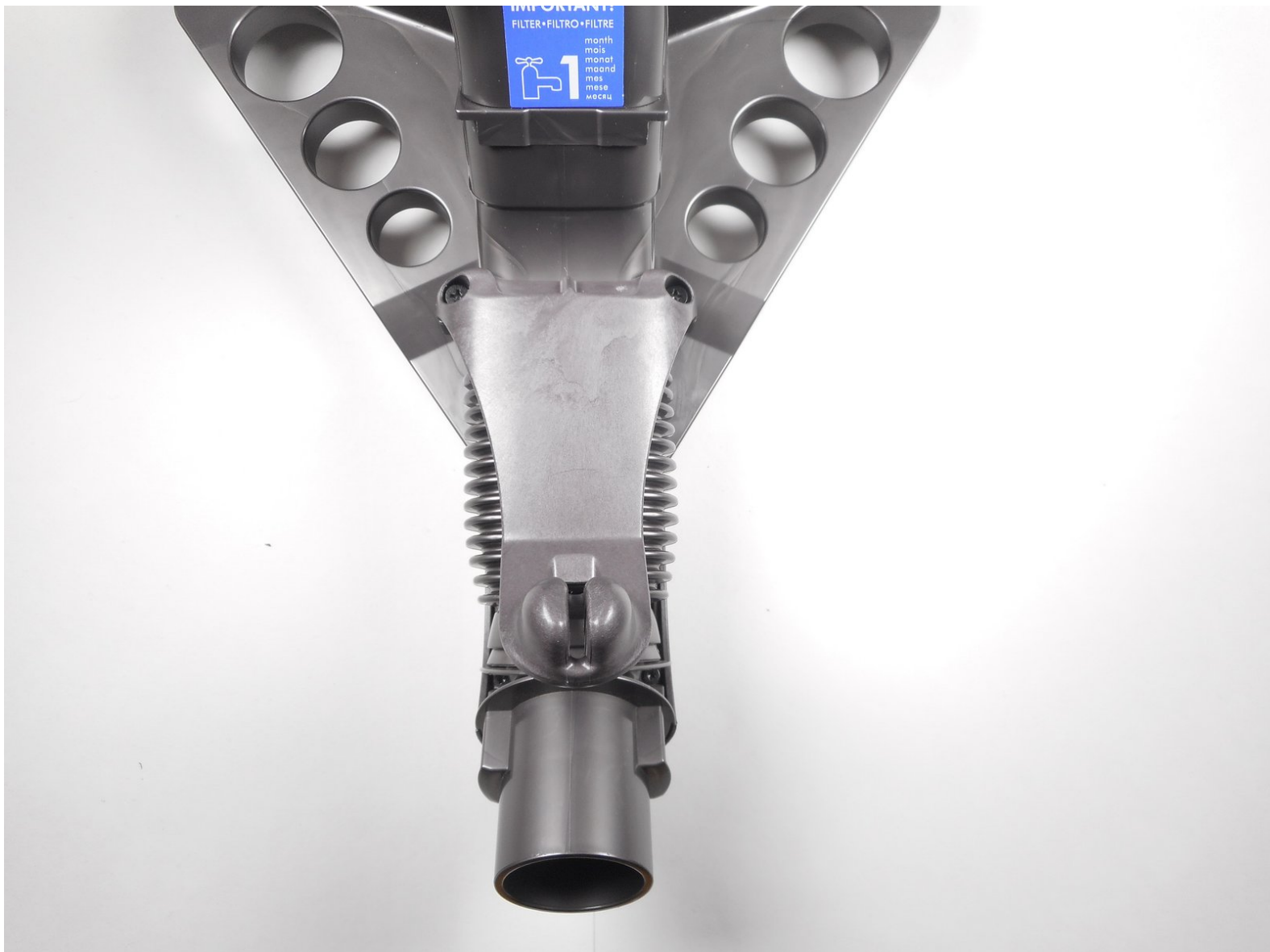




Dyson DC39 Origin Replacement

Replace the inlet hose on the Dyson DC39 Origin to fix suction problems or leaks in the hose.

Written By: Michael Hutcheson



INTRODUCTION

This guide shows how to remove the inlet hose of the Dyson DC39 Origin. This process requires removing the bin and separating the steering assembly from the main body of the device.

TOOLS:

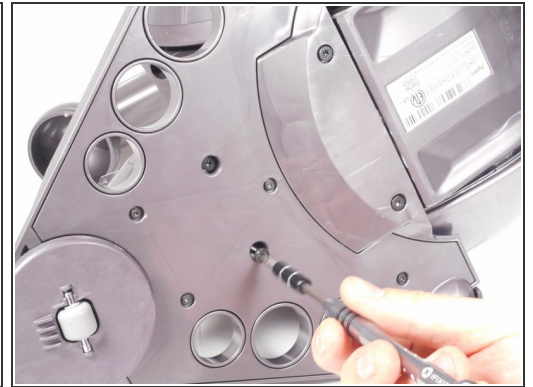
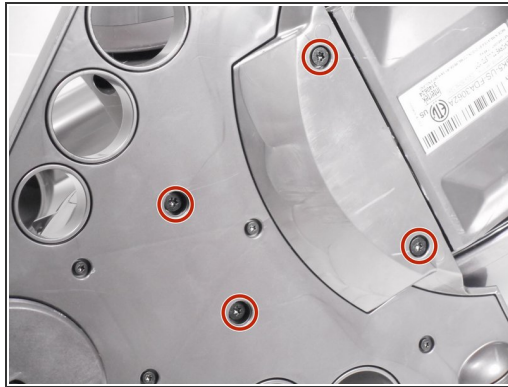
- [T15 Torx Screwdriver](#) (1)
 - [Phillips #2 Screwdriver](#) (1)
 - [T9 Torx Screwdriver](#) (1)
-

Step 1 — Bin



- Push down on the gray button located next to the power button to release the bin from the ball housing.
 - Pull the bin away, then up from the ball housing to remove it.
- ☒ If the bin won't fit back into place during re-assembly, you may need to push the grey button again.

Step 2 — Steering Assembly



- Place the ball housing on its side and orient it so that the underside of the steering assembly is facing you.
- Remove the four 18.0 mm Torx 15 screws.

Step 3



- Using two hands, hold the ball housing with the handle in one hand and the steering assembly base in the other.
- ⓘ Hold the steering assembly base near one of the wheels.
- Pull the steering assembly base directly away from the ball housing. You should notice a pin release.
- Push up on the steering assembly to remove it completely from the ball housing.
- ☑ During reassembly, slide the steering assembly in first, then push the pin back into its locking position.

Step 4 — Inlet Hose



- Remove the two 17.8 mm Phillips #2 screws located in the top of the inlet hose bracket.
 - Remove the two 13.7 mm Torx 8 screws located at the opposite end of the inlet hose.
- ⚠ The Torx 8 screws are located at an odd angle. Be sure the screwdriver is secure to prevent stripping the screws.

Step 5



- Pull the inlet hose straight up from the steering assembly.
 - ⓘ The inlet hose 'snaps' out of its position, so you may have to apply a little extra force while pulling.

To reassemble your device, follow these instructions in reverse order.