



Dell XPS 13 Wireless Card Replacement

How to replace the wireless card in your XPS...

Written By: Jay



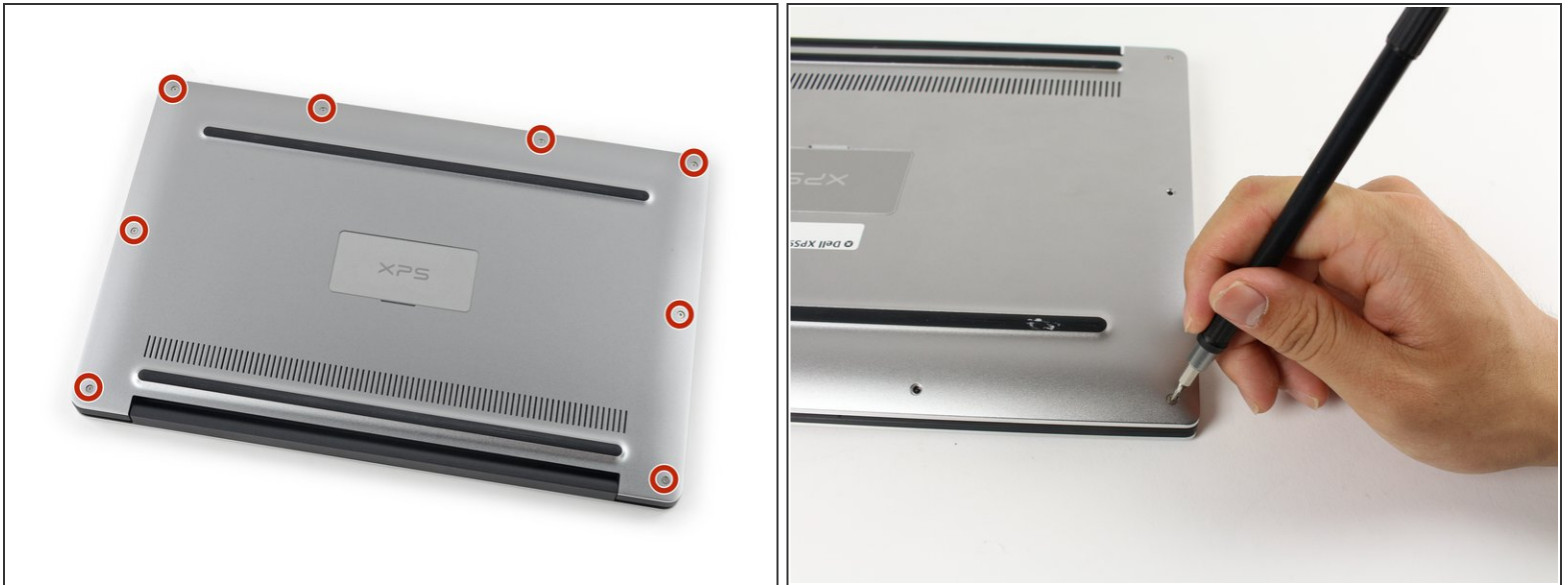
INTRODUCTION

How to replace the wireless card in your XPS 13. If you're having trouble connecting to wi-fi, replacing or re-seating the wireless card may fix it.

TOOLS:

- [iFixit Opening Tool](#) (1)
 - [iFixit Opening Picks \(Set of 6\)](#) (1)
 - [Spudger](#) (1)
 - [T5 Torx Screwdriver](#) (1)
 - [Phillips #0 Screwdriver](#) (1)
 - [Tweezers](#) (1)
-

Step 1 — Back Cover



- Remove the eight 4 mm T5 Torx screws from the bottom cover.

Step 2



- Use a plastic opening tool to pry open the 'XPS' flap in the middle.

Step 3



- Remove the single Phillips screw hidden beneath the flap.

Step 4



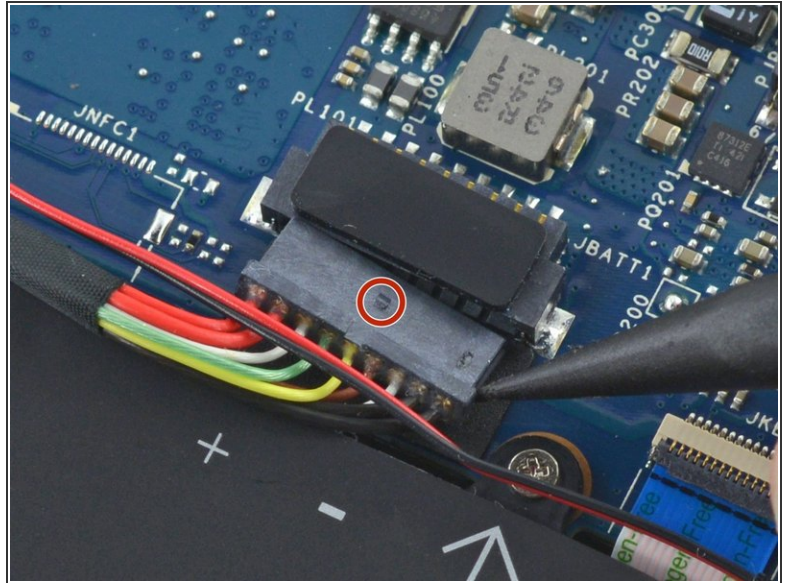
- Use opening picks or a plastic pry tool to pry open the case clips, beginning from the back edge.

Step 5



- Remove the bottom cover.

Step 6 — Battery Disconnection



- Pull the battery cable connector towards the battery to disconnect it from its socket.
 - If the connector is stubborn, push a little at one side, then the other, to "walk" it out of its socket.
 - If you have trouble walking the connector out of the socket, use the point of a spudger to gently push on the connector indent to slide the connector out.

⚠ Do not pull up.

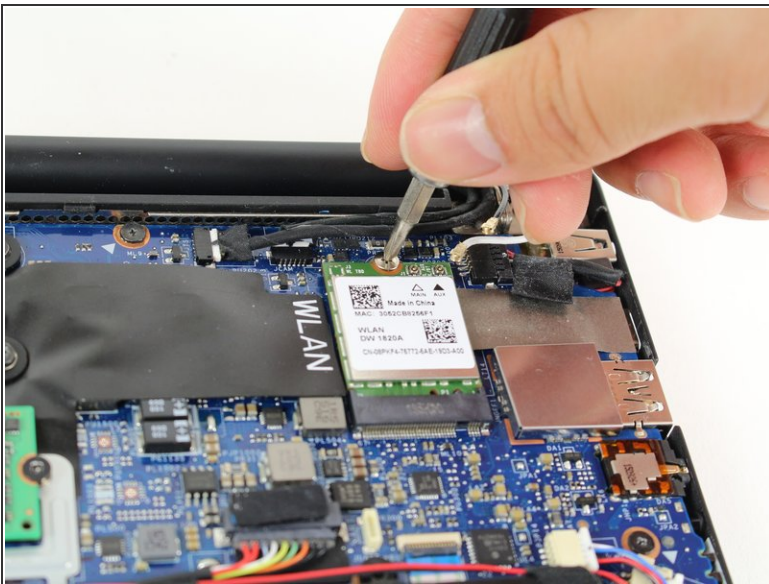
- Open the display and press the power button for five seconds to drain any remaining charge from the system.

Step 7 — Wireless Card



- Pry the white and black antenna wire connectors straight up from the wireless card to disconnect them.
- ⓘ Pry the connectors gently from the bottom of the metal heads.
- ☑ During reassembly, make sure the white cable connects to the socket marked with the white triangle, and that black goes to black.
- To reconnect each wire, align the connector carefully over its socket and press down firmly.

Step 8



- Remove the 3 mm Phillips #0 screw that secures the Wi-Fi card in place.
- ⓘ The Wi-Fi card will pop up at a 45-degree angle once the screw is removed.

Step 9



- Pull the wi-fi card straight out of its socket.

To reassemble your device, follow these instructions in reverse order.