



[Click here for the updated version of this...](#)

A close-up photograph showing a person's hand holding a Samsung NVMe SSD. The SSD is a green printed circuit board (PCB) with a white label. The label contains the following information: S/N: S29NNXA9999867, MSRP-REM-SEC-MZ-VLV572, EUI64: 00253841591C9618, and a barcode. Below the main label, there is another white label with the text: 4519ZH31L24. The SSD is being held over a laptop motherboard, which is blue and has various components visible, including a black heat sink, a black SATA-to-NVMe adapter, and a black SATA-to-NVMe adapter. The motherboard also has a black label with the text: 5BA-0578-A00, Made in China, and DP-N OV33HM. The background is a plain white surface.

# INTRODUCTION

[Click here](#) for the updated version of this guide. The guide you are currently viewing is archived here for historical purposes only.

## TOOLS:

[T5 Torx Screwdriver](#) (1)

[iFixit Opening Picks \(Set of 6\)](#) (1)

[Spudger](#) (1)

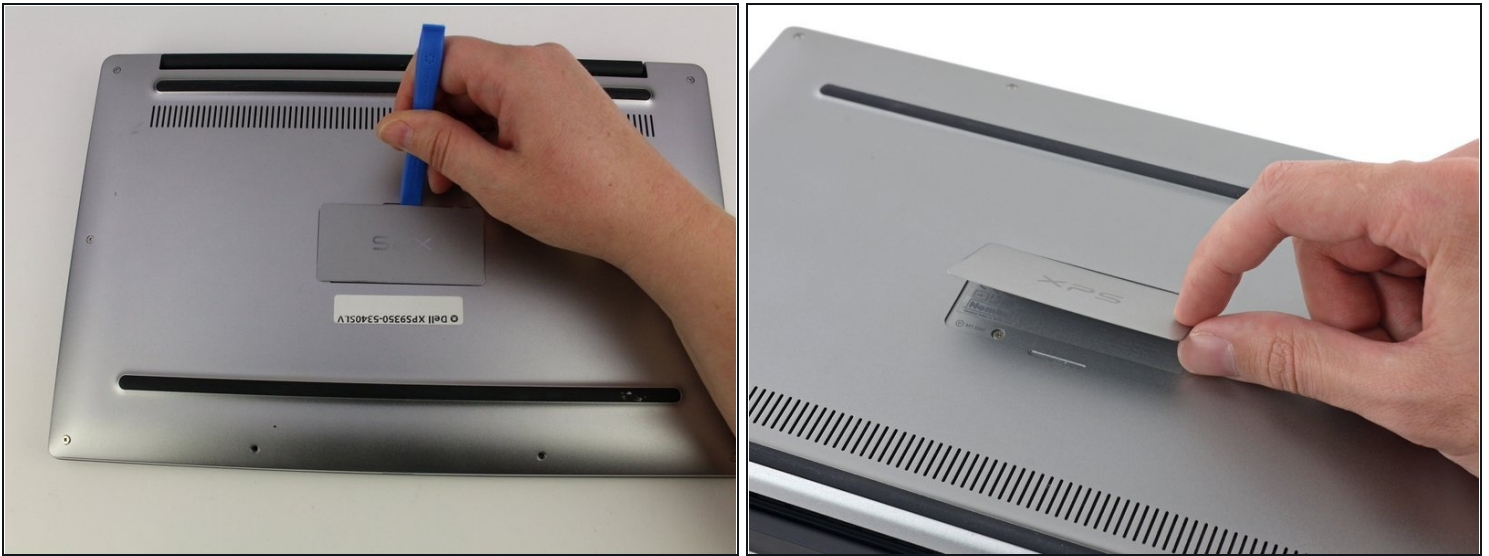
[Phillips #00 Screwdriver](#) (1)

## Step 1 — Back Cover



- Remove the eight 4 mm T5 Torx screws from the bottom cover.

## Step 2



- Use a plastic opening tool to pry open the 'XPS' flap in the middle.

## Step 3



- Remove the single Phillips screw hidden beneath the flap.



## Step 4



- Use opening picks or a plastic pry tool to pry open the case clips, beginning from the back edge.

## Step 5



- Remove the bottom cover.

## Step 6 — Solid State Drive (SSD)



- Remove the black, 4 mm Phillips #000 screw on the right of the SSD.
- ⓘ The SSD card will pop up at a 45-degree angle after the screw is removed.

## Step 7



- Gently lift the SSD card with your hand to pull it up and to the right.

To reassemble your device, follow these instructions in reverse order.